



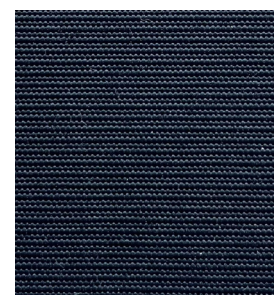
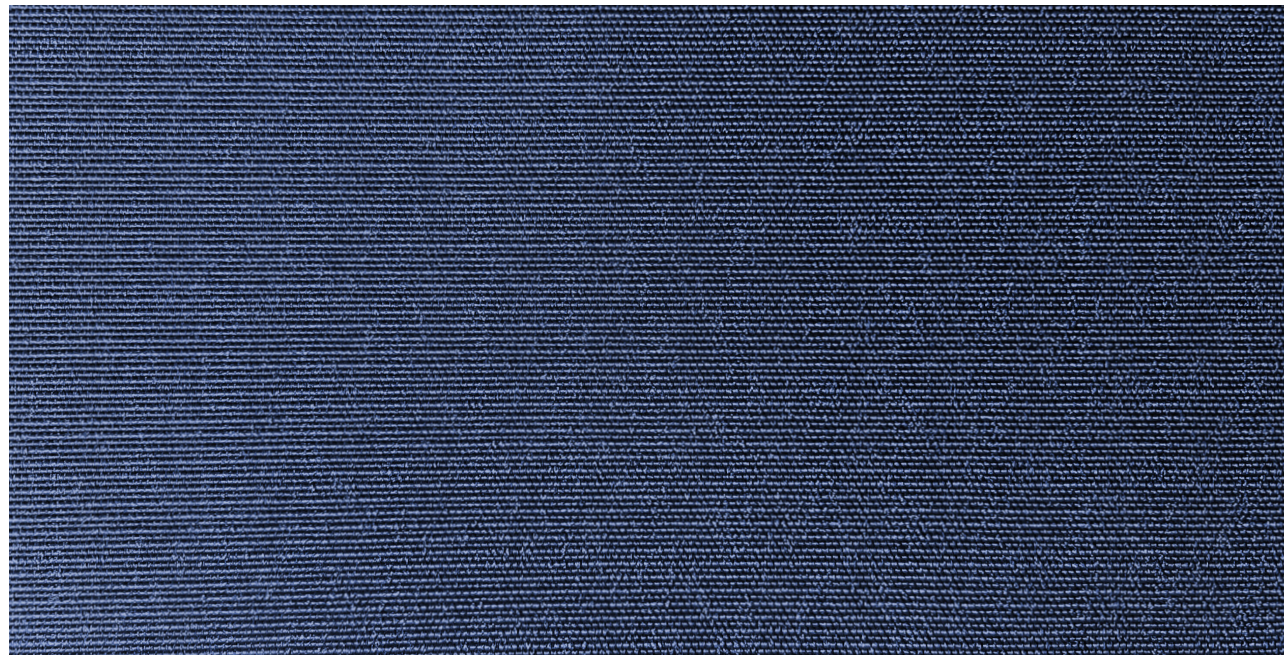
**CLICK HERE**  
To view stock levels  
and colours  
on our product  
pages

**Sola** TX

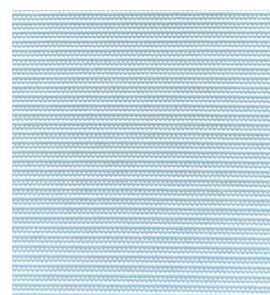
Technical Xtreme Outdoor Fabrics by  
**Bainbridge**



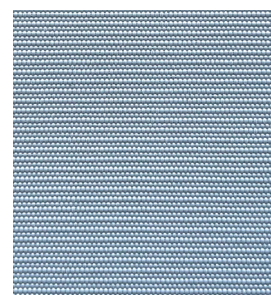
- ◆ Fabric width: 1.94m
- ◆ PU coated with Fluorocarbon+ finish
- ◆ Solution dyed polyester
- ◆ >1000mm hydrostatic water column\*



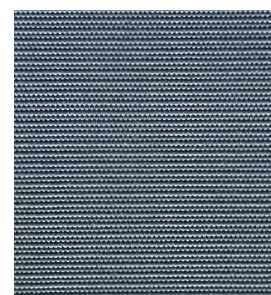
Black - **F82519499**



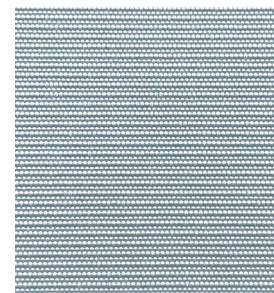
White - **F82519400**



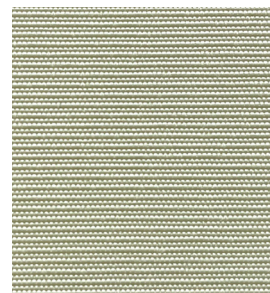
Cadet Grey - **F82519494**



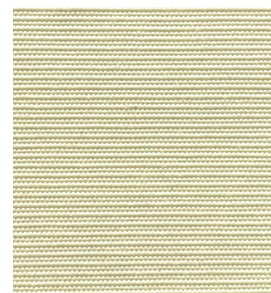
Charcoal Grey - **F82519492**



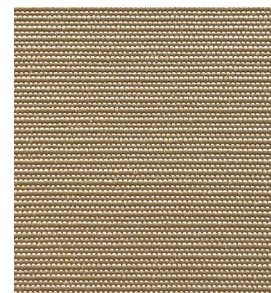
Silver - **F82519490**



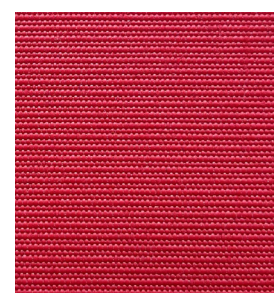
Ivory - **F82519402**



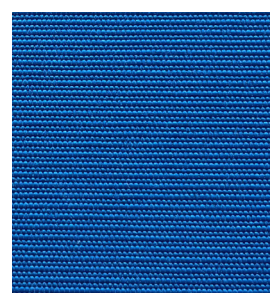
Sahara - **F82519432**



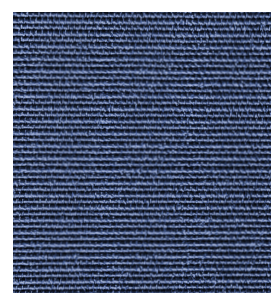
Beige - **F82519423**



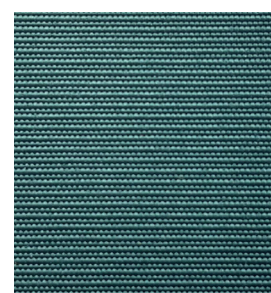
True Red - **F82519410**



Pacific Blue - **F82519460**



Navy Blue - **F82519462**



Forest Green - **F82519450**

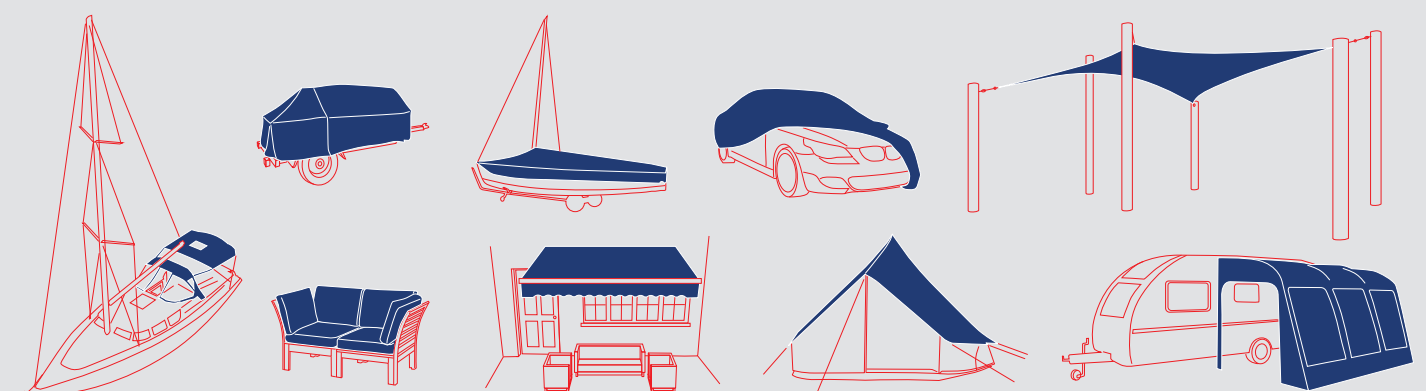
Exceeding the highest requirements for functionality and lifespan



**25%  
BETTER**  
than the nearest  
competitor  
in its field\*

## SolaTX Benefits

- ◆ Technical ribbed ottoman weave
- ◆ Low weight
- ◆ High breathability
- ◆ Water tightness
- ◆ PVC free
- ◆ High UV resistance
- ◆ No colour bleed or rub-off
- ◆ Superb colour fastness
- ◆ Xtreme strength and tear resistance
- ◆ Salt water, oil, dirt and water repellent
- ◆ Flame resistant with an antimicrobial finish
- ◆ Easy handling for storage
- ◆ Fluoro+ finish for dirt and water repellancy
- ◆ Mould resistant
- ◆ No stress whitening
- ◆ Dimensionally stable





## SolaTX Polyester Technical Data

Testing	Typical Value	Testing Methods
Material Base	350 dtex Polyester, PU-coating and Fluoro <sup>+</sup> finish	-
Roll Width	1.94m	-
Roll Length	50m	-
Weight	280gsm	ISO 3801-1977, Method 5
Colour Fastness	7 Level	DIN EN ISO 105 B02
Tensile Strength	Warp >1500N / 5cm, Weft >1300N / 5cm	DIN EN ISO 13934-1
Elongation	Warp 45%, Weft 30%	DIN EN ISO 13934-1
Tear Strength	Warp >40N, Weft >40N	DIN EN ISO 13937-2
Water Column	>1000mm	ISO 811
UPF	50+	-
UV-Stability	>4 - 5	ISO 4892-2 after 2000 h
Flame Resistance	Self-Extinguishing	FMVSS 302

### CARE & CLEANING

Proper care and cleaning should be taken to ensure the life of **SolaTX** fabrics.

For regular care and maintenance, the excess dirt should be brushed from the fabric using a soft brush: the fabric should then be sprayed with warm water and air dried.

Periodically, the fabric should undergo a more thorough cleaning. Again, brush the fabric with a soft bristled brush, spray with warm water, then apply a gentle soap. Allow to stand for 10-20 minutes taking care not to let it dry, then rinse thoroughly and air dry.

Do not use detergents and /or solvents.

### WARRANTY

**SolaTX** fabrics are manufactured with only the highest quality raw materials and the most rigorous quality-assurance procedures in Europe.

We offer a 5 year limited warranty on our **SolaTX** solution dyed polyester products.



The technical data is to be considered as indicative.

Minor colour variations possible between batches. Ensure only one batch is used per order.

Can be sewn or ultra-sonically welded.



### Bainbridge International Ltd

8 Flanders Park, Southampton, Hampshire SO30 2FZ UK

**T:** +44 (0) 1489 776000

**E:** info@bainbridgeint.co.uk

**W:** bainbridgeint.com