

CERTIFIED FOR USE ON BUOYS

## BT100 | Fishing Buoy Tracker



### DESCRIPTION

Precisely track, locate and protect your buoys and gear using em-trak's BUOY-Tracker. Designed for continuous use and powered by its own internal battery, this market-leading AIS transponder will operate continuously for five days between charges and integrate seamlessly with your existing onboard navigational display.

NOTE: in order to operate BUOY-Tracker, you will require a bracket and a charger. Prior to use BUOY-Tracker must be programmed and you will need a Programming Dock to perform this exercise. The Programming Dock can be used to program multiple BUOY-Trackers and also acts as a charger. BUOY-Tracker is used globally in different applications and em-traks accessories allow you to create your own combination of BUOY-Trackers, chargers and brackets suitable for your own individual requirements.

### FEATURES

- | Globally certified Type 1 AIS Aids to Navigation Transponder
- | Simple to configure and use – automatically switches on when fixed to buoy
- | Precise location and identity of buoy displayed on your chart display in real time using AIS
- | 120 hour operational life between charges – internal battery recharges within 5 hours
- | Ruggedized for continuous long term operation at sea in even the harshest of weather



TRANSMIT



WATERPROOF



BATTERY



GPS

## PHYSICAL & ENVIRONMENTAL SPECIFICATION

Size (H x W x D)	67 x 370mm
Weight	355g
Operating temperature	-25°C to +55°C
Storage temperature	-25°C to +70°C
Ingress protection	IPx6 and IPx8

## ELECTRICAL SPECIFICATION

Battery capacity	2300mAh
Battery type	3.7V Li-Ion rechargeable
Battery life (default operating conditions)	120 hours

## STANDARDS COMPLIANCE

AIS standards	IEC 692320-2 Ed. 2
Product safety standards	EN60950-1 2006 +A1:2009 +A1:2010 +A12:2011 +A2:2013
Environmental standards	IEC 60945 Ed. 4
GNSS performance standards	IEC 61108-1 Ed 2.0

## GNSS

Systems supported	GPS
Channels	50
Internal/external antenna	Internal only
Time to first fix from cold start	37s

## VHF TRANSCEIVER

VDL access scheme	FATDMA
Operating frequency	156.025MHz - 162.025MHz
Channel bandwidth	25kHz
Receivers/transmitters	1 x transmitter
AIS transmitter power	1W (30dBm radiated)

## USER INTERFACE

Indicators	Status indicator
------------	------------------

## CHARGING DOCK

Size	110 x 120 x 78mm
Weight	360g
Power Supply	115V / 240V AC

## CONFIGURATION DOCK

Size	110 x 120 x 78mm
Weight	360g
Power Supply	115V / 240V AC
PC interface	USB (cable supplied)

## IN THE BOX

1 x AIS transceiver
<b>You will also need to purchase 1 x Bracket and fixings pack and</b>
<b>1 x Charging and configuration dock in order for the unit to operate</b>

## WARRANTY

With em-trak you can buy with confidence. If you are unhappy with your new product for any reason, within two days of receipt and subject to the product and packaging being complete and undamaged, you may return it to us for a full refund. We are sorry, but we cannot accept the return of any product if you have not advised us in writing within 48 hours of receiving your em-trak product, or if it has been used and or damaged or if any of the package is incomplete. All em-trak products benefit from our three year global warranty. In the unlikely event of a problem, please contact our Customer Support department (24/7) at support@em-trak.com and one of our experts will work with you to resolve your issue or arrange the repair or replacement of your em-trak product. The warranty is invalidated if the product has been incorrectly used, damaged or tampered.

## HEAD OFFICE

em-trak Marine Electronics Ltd  
Wireless House  
Westfield Industrial Estate  
Midsomer Norton  
Bath BA3 4BS  
United Kingdom

T +44 (0)1761 409 559  
F +44 (0)1761 410 093  
E enquiries@em-trak.com  
W www.em-trak.com

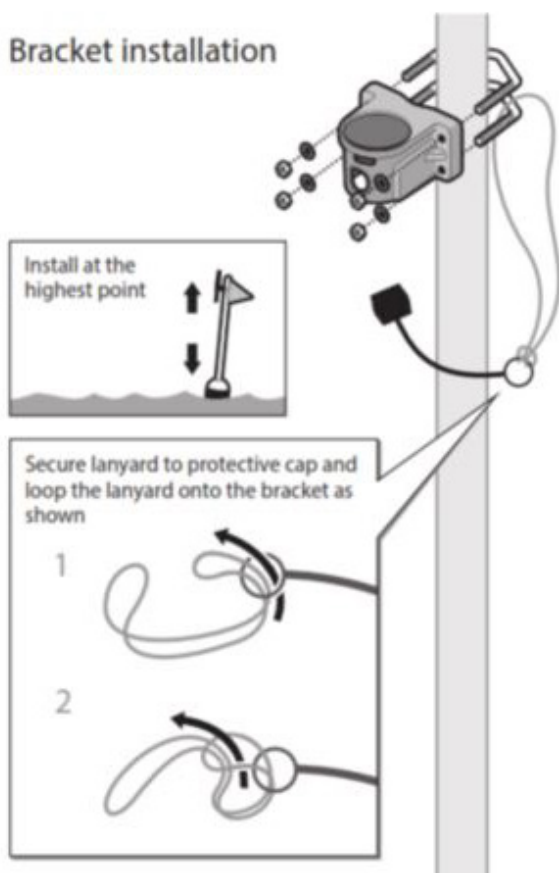
## USA OFFICE

em-trak Marine Electronics Ltd  
470 Atlantic Avenue  
4th floor  
Boston  
02210  
USA

T +1 617 273 8395  
F +1 617 273 8001  
E enquiries@em-trak.com  
W www.em-trak.com

BT100 | FISHING BUOY-TRACKER  
**INSTALLATION GUIDE**

**Bracket installation**



**Install BUOY-Tracker**

