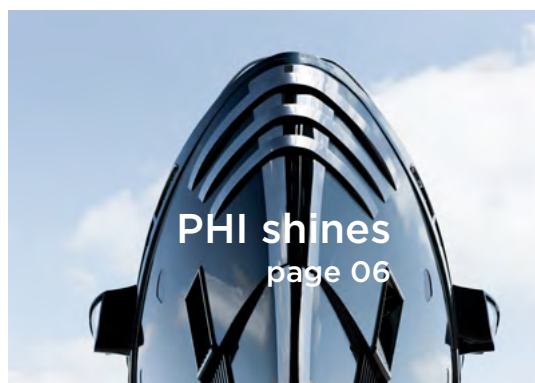


AUTUMN 2021



Dear Friends,

It was a real pleasure for us to meet so many clients and friends again from the superyacht sector at the recent Monaco Yacht Show. The vibe was certainly special after the disruption of the last 18 months and it was especially pleasing to receive so many kind messages of congratulation on our latest order, a 65m Performance Ketch. (See page 03).

We are honoured that this experienced and returning client has entrusted Royal Huisman with the realisation of his dream – a uniquely beautiful sailing yacht. Project 408 fits perfectly within our growing newbuild portfolio of exceptional sailing and motoryacht projects.

On page 02 of this edition of e-Inhuis you can find an overview of our current newbuild projects. Collectively they illustrate the breadth of Royal Huisman's capability – from sailing yachts to motor yachts, from classic to contemporary, each with its individual focus. They vary from cutting-edge sailing performance to global cruising, from specialised sport fishing to the faithful recreation of a classic legend. The common denominator is the owners' quest for perfection of build as well as proven ingenuity to innovate. As such, we're

currently looking at a strong new-build order book and an impressive array of Huisfit refit projects.

In this new edition you will find plenty of interesting articles including 'featherlight' construction, 'two-boat' projects, and several items about performance optimization of sailing yachts. In case you have any specific question related to your own yachting dream, please do get in touch.

As always, you are welcome to visit our shipyard at your convenience – either via a virtual tour or 'live'. There is a lot to see, both at our newbuild facilities in Vollenhove and at our Huisfit facilities at Royal Huisman Amsterdam. Our team will be on hand at the METSTRADE show in Amsterdam (see page 12) – another option to meet and chat if that suits you better.

For now, we hope you will enjoy reading the autumn edition of e-Inhuis and we look forward to hearing from you!



Warm regards, on behalf of the Royal Huisman group,

Jan Timmerman
CEO Royal Huisman



The Spirit of Individuality

PROJECT 403



ROYAL HUISMAN


AQUARIUS



NGONI



SEA EAGLE II

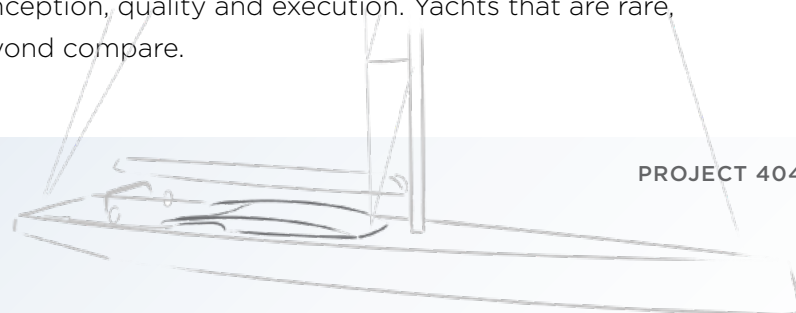
Some names need no introduction. To anyone who ever genuinely considered acquiring a luxury superyacht, hearing the name “Royal Huisman” as the builder of those finest and most distinctive yachts in the regatta or marina will be a familiar experience.

When admiring the build quality and attention to design detail on a particular yacht, the reply from her owner or crew “It’s a Huisman!” is virtually regarded as self-explanatory. Royal Huisman yachts are deemed unique in conception, quality and execution. Yachts that are rare, beyond compare.

YACHTS UNDER CONSTRUCTION

The newbuild projects in Royal Huisman’s current order book embrace this ‘spirit of individuality’:

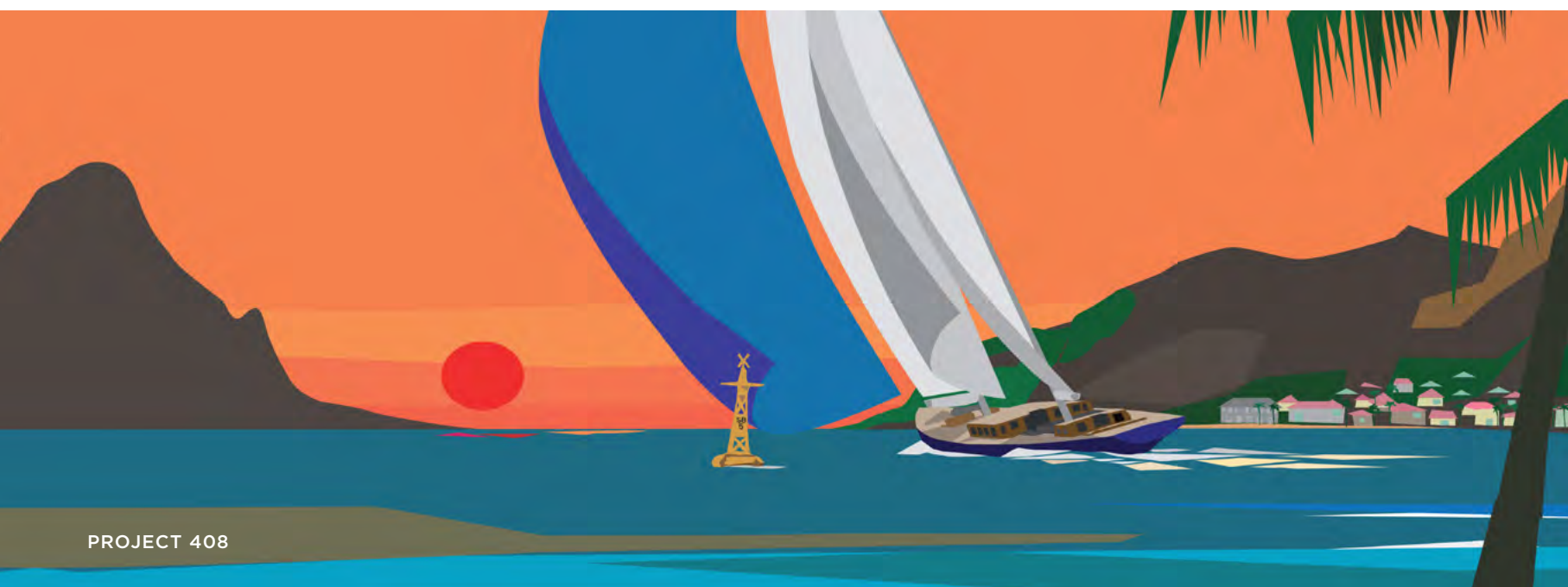
- Project **403**: 58.5m / 192ft fast displacement motoryacht
- Project **404**: 59.7m / 196ft high-performance sloop with electric, retractable propulsion
- Project **405**: 47m / 154ft high-performance cruiser sloop
- Project **406**: 52m / 171ft true sportfish yacht
- Project **407**: Rebuild by Huisfit of the 37m / 122ft motorsailer Atlantide (this major restoration by the shipyard’s dedicated division for refit, rebuild and renewal merits the same status as a “Royal Huisman newbuild”, hence the matching project number)
- Project **408**: 65m / 212ft performance ketch



PROJECT 404

Being entrusted by an owner to turn his or her dream into reality is a moment of great pride for Royal Huisman and its employees. It makes the shipyard’s team very aware that they have been asked to create something truly special - a yacht is a matter of the heart and not just a means of transportation.

Read much more about each of the above projects on the Royal Huisman website > **Yachts > Yachts under construction** [click here for a link]



PROJECT 408



PROJECT 407

“Royal Huisman increasingly seen as ‘builder of choice’ for exceptional superyachts”



PROJECT 406

PROJECT 408

New Order for 65m Performance Ketch

The joint teams of Royal Huisman, Dykstra Naval Architects and Mark Whiteley Design are delighted to announce the newbuild agreement for an exciting 65m / 212ft performance ketch rigged sailing yacht.

The initial stages of concept design and development by the experienced owners' team, architects and builder have been successfully completed and signed off: an important milestone which coincided with the start of the 2021 Monaco Yacht Show.

The creation of the stunning new superyacht is currently focused on multidisciplinary design and engineering, which are the subsequent steps of Royal Huisman's efficient Stage Gate process project management and Concurrent Engineering approach.

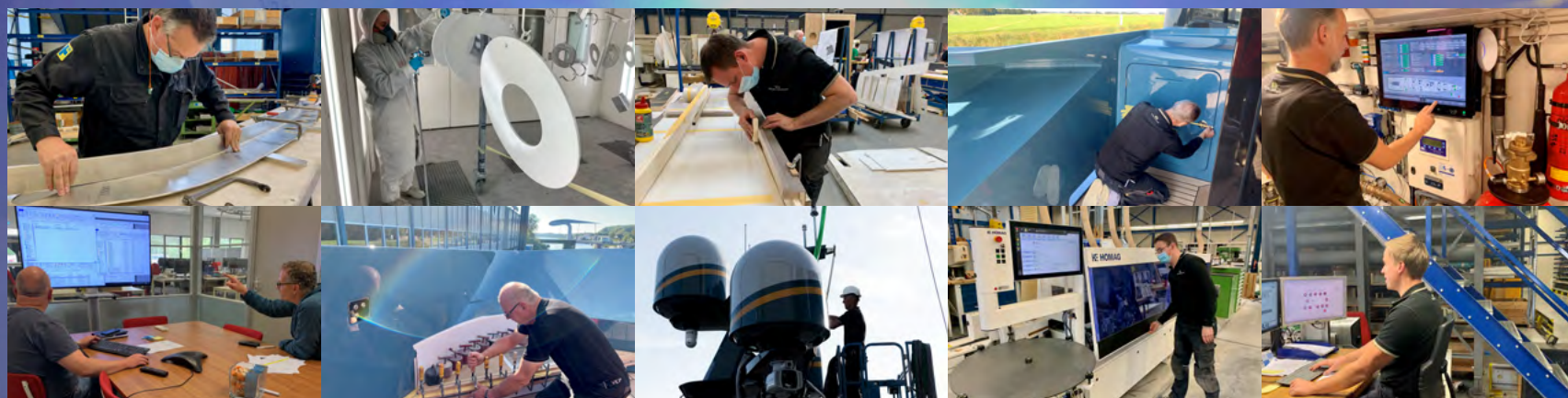
One of the key aspects to this ketch rigged sailing yacht project is the optimisation of performance: Alustar aluminium construction, carbon rig, and an integrated sailing system by Rondal were specified to enhance winning potential on the superyacht regatta circuit. Read more about project 408 at the Royal Huisman website > **News > Announcements** [click here for a link]

The Spirit of Individuality

So, what is left to add?

Perhaps just this – Royal Huisman continues to strive to make what is good, even better; constantly looking to implement innovative ways to remain at the forefront of edgy and technologically-advanced design, engineering and production.

Passion for Perfection



Today's Royal Huisman is an extraordinary blend of twenty-first century technology and innovation, traditional craftsmanship and timeless values. As one client surmised when contemplating the differences between Huisman yachts and other builds:

“You might get something that looks like a Huisman yacht, but it won't be a Huisman yacht”

Passion for perfection is the driving force behind the Royal Huisman team, for whom “quality” is defined not just by the yachts they build, but by every single aspect of customer service, care and communication.

Read more at the Royal Huisman website >

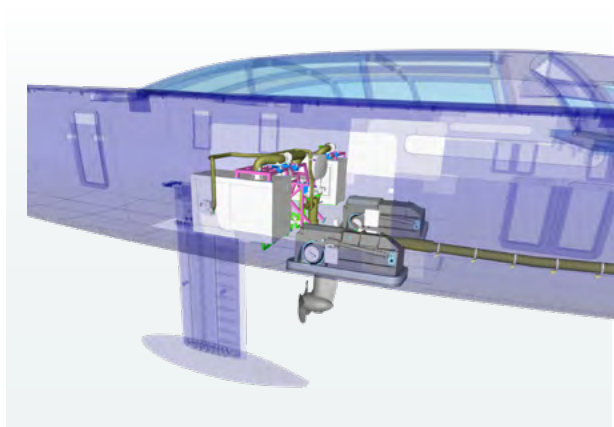
Discover > Passion for perfection [[click here for a link](#)]

More to discover



EXPERIENCE THE EXPERIENCE

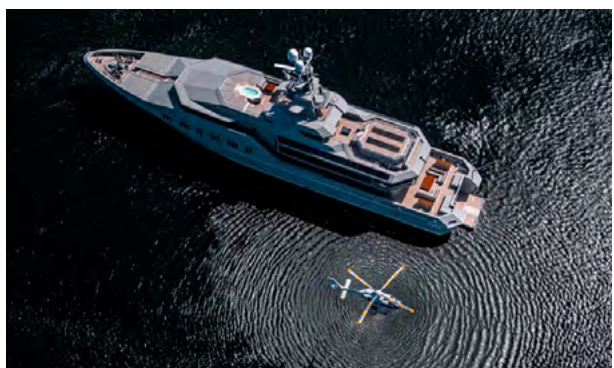
Sailing a Royal Huisman yacht is an experience like no other, whether you're the one at the wheel – benefitting from its performance, handling and balance in demanding conditions – or the one delighting in its finish and comfort at an idyllic anchorage.



INNOVATION

The family-operated Huisman yard built all kinds of wooden workboats when it was founded in 1884. Fit for purpose and value for money. But in the 135 years since, another aspect to boat-building gained importance: innovation.

Some innovations were relatively small-scale; others were industry-trendsetters, such as the introduction of leisure sailing craft in the 1920s and the pioneering use of aluminium in the 1960s and 1970s for yachts and race boats. Those Those times have long passed, but innovations (and quality) have remained the backbone of Royal Huisman's success.



STAYING 'HUISFIT'

Every yacht requires a refit and refurbishment from time to time. Even Royal Huisman yachts eventually feel the strain of the extensive global passage-making so thoroughly enjoyed by their owners. Huisfit, Royal Huisman's dedicated refit division, offers an extensive range of benefits and services to all superyachts in the global fleet.



THE SHIPYARD

Royal Huisman employs a team of nearly 300 highly motivated and competent people, from skilled craftsmen to expert concept designers, with extraordinarily diverse experience and capabilities, working at facilities for custom builds in Vollenhove. For some years now, the shipyard facilities have been extended to the Amsterdam region. This second location serves as an addition to the existing shipyard, with a focus on Huisfit projects.



OUR HERITAGE

A tradition of excellence since 1884: the shipyard has evolved from "local builder of wooden workboats" to being the multiple award-winning creator of some of the finest superyachts in the world.

IN THE SECTION 'DISCOVER' ON THE ROYAL HUISMAN WEBSITE YOU CAN ALSO LEARN MORE ABOUT THESE INTERESTING TOPICS [\[CLICK ON THE PHOTOS FOR A LINK\]](#)

PHI Shines!



One of this year's highlights was the launch of the 58.5m / 192ft motoryacht PHI at Royal Huisman's newbuild facility. Developed and constructed to remain below 500GT, PHI is by far the longest motoryacht in the <500 GT category, worldwide, based on current Classification rules.



Even for superyacht builders, PHI's fine hull lines and very low profile, are a great challenge to engineer and build. But thanks to their immense experience and track record for constructing over thirty innovative low-profile and award-winning custom sailing superyachts, Royal Huisman was not remotely intimidated by this project.

As Royal Huisman CEO Jan Timmerman explains:

“Just consider our two current motoryacht projects. The individual aspirations and challenges of both of these projects were well outside the comfort zone of many other yards.

Benefitting from expert advice, both owners took their highly distinctive visions to Royal Huisman, where these fresh opportunities for creative problem-solving and innovation were enthusiastically welcomed. So what gives Royal Huisman so much confidence in our capability to build exceptional motoryachts? ”

Find out at the Royal Huisman website > **News > Announcements** [click here for a link]

PROJECT 403 - PHI - 58.5M / 192FT - THE LONGEST MOTORYACHT BELOW 500GT (BASED ON TODAY'S CLASSIFICATION RULES) - GENERAL CONCEPT, EXTERIOR DESIGN & INTERIOR LAYOUT: COR D. ROVER - NAVAL ARCHITECTS: VAN OOSSANEN INTERIOR DESIGN: LAWSON ROBB - PROJECT MANAGEMENT / OWNER'S REPRESENTATIVE: GUY BOOTH - BUILDER: ROYAL HUISMAN



Are two boats better value than one?

PHI will be operated in conjunction with its 36m / 118 ft support vessel PHI Phantom, both of which will share aesthetic DNA. Owners' representative Guy Booth estimates that PHI would need to be a 90m / 295ft project in order to deliver the same functions on board one yacht.

Most owners will habitually think of sizing up when they decide they want more space. However, this mindset is changing the more clients realise how much the onboard experience can be optimised with a support vessel.

Read more of this article by The Superyacht Owner Report at the Royal Huisman website > **News > Inhuis stories & updates** [click here for a link]



Unique motoryachts by Royal Huisman

Royal Huisman's reputation is largely built on a superlative portfolio of thirty-plus low-profile sailing superyachts. From classic to contemporary, from 30m to 90m+ / 100ft to 300ft+, every single beauty is unique, tailor-made. Yet the legendary passion for perfection, expertise, quality, flexibility and continuous innovation behind these projects is not limited to sailing yachts.

Read more in the article "Unique motoryachts" at the Royal Huisman website > **News > Inhuis stories & updates** [click here for a link]

Royal Huisman project 406 is currently under construction at the shipyard's newbuild facilities. This ground-breaking creation will be, by some distance, the largest, most luxurious and individual, true sportfish yacht in the world. Designed for an experienced owner who is passionate about fishing, she will be immaculately and



extensively fitted out - both for high end sportfishing and for luxurious living. The Alustar® aluminium hull and superstructure offer strength and resilience, as well as the lighter weight that facilitates smooth and efficient passages from berth to fishing grounds.



“We love and enjoy Arcadia. She is part of our family. Our grandchildren grew up with her. Our friends all consider her a second home.

We are looking forward to many more years of enjoyment with family and friends aboard the wonderful yacht Royal Huisman built for us. She gets better each year.”

The owner of Royal Huisman motoryacht Arcadia



A tradition of excellence since 1884. Note the ship's model: this was the reference for the motor cruiser the Huisman team was constructing.

MEGAYACHT NEWS, USA:



“Trying to offer more freedom

Dating back to 1884, Royal Huisman has a longstanding, strong focus on sailing yachts. [...] it's synonymous with some of the world's most famous sailing superyachts. Therefore, its decision to build motoryachts has surprised some industry watchers—and simultaneously delighted owners and designers. In an interview during September's Monaco Yacht Show, Jan Timmerman, Royal Huisman's CEO, shared the shipyard's power vision. ”

Read the interview at **megayachtnews.com** [click here for a link]

PROJECT 405 Turning the Feather

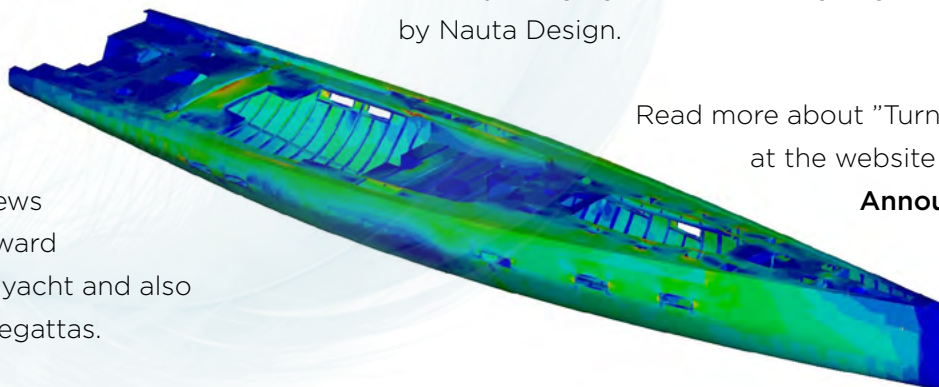


The lightweight construction of the 46.82m performance cruiser, Royal Huisman's project 405 aka Reichel / Pugh - Nauta 154, employs the shipyard's new "Featherlight" method which combines the best of both worlds: performance and comfort

The turning of the modern performance hull at Royal Huisman's newbuild facilities is an important milestone in the build process. It marks the start of the outfitting, during which various carefully selected and especially developed components will be fitted to ensure that this vessel will be both extremely lightweight and – compared to existing carbon composite superyachts – very competitive in regattas.

At the same time, this radical new concept will offer all the benefits associated with existing Royal Huisman yachts: comfort, low noise levels, and optimal world cruising characteristics. All good news to the owners, who are looking forward to exploring the world in their new yacht and also anticipate participating in various regattas.

The modern and powerful hull shape of Royal Huisman project 405, with its straight bow, wide transom, and twin rudders, capably embodies the naval architecture and hydrodynamic design by Reichel / Pugh Yacht Design, who have an impressive reputation for creating high-performance designs. The trunk for the retractable keel, the deckhouse, guest cockpit and hardtop will all be carbon composite, and are currently being manufactured "next door", at Rondal. The shipyard's sister company is skillfully bringing to life, the intriguing shapes envisaged by Nauta Design.

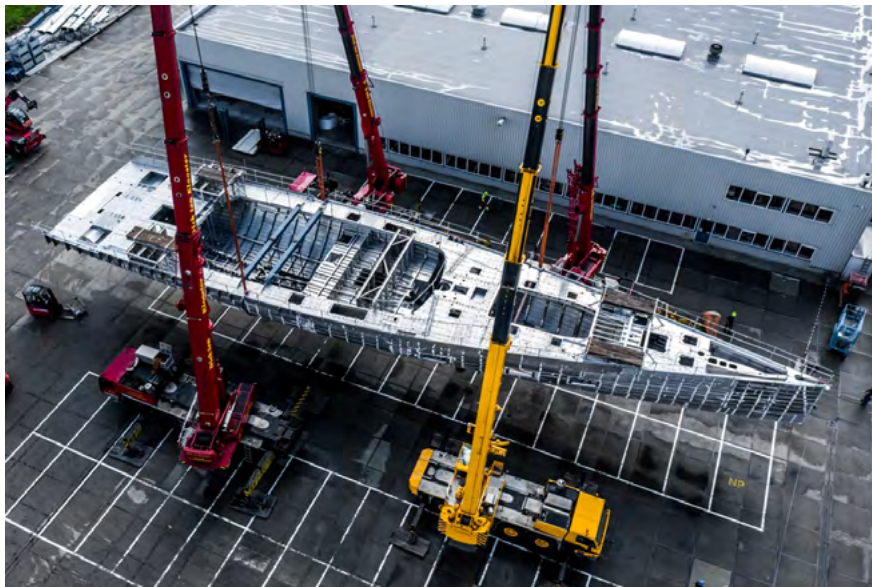


Read more about "Turning the feather"
at the website > **News >**

Announcements [click
here for a link]



The hull is a high-grade mix of aluminium and carbon composite, utilizing a semi-automated parametric structural optimization process. During sixteen iterations that are part of the shipyard's new "Featherlight" method, the structural weight is reduced with an admirable 11% compared to conventional methods, whilst maintaining stiffness of the hull and ensuring structural integrity.



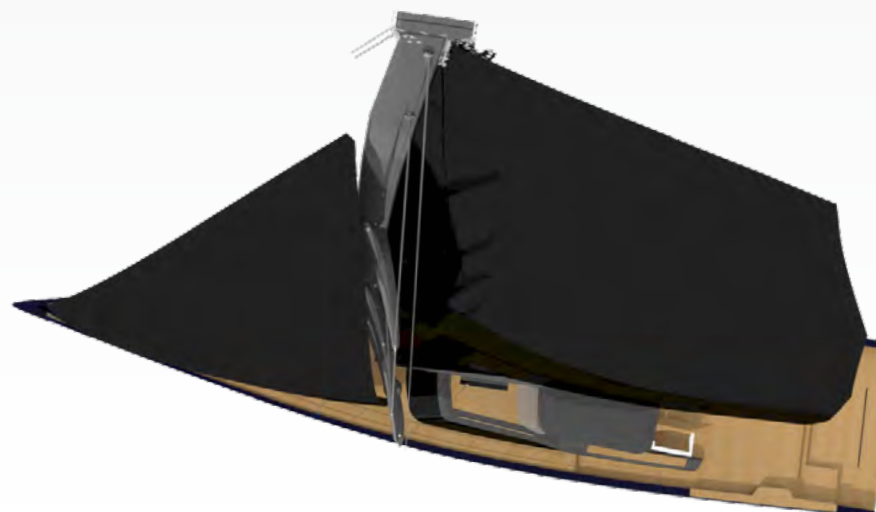
Innovations at Rondal

Performance Optimization

Royal Huisman's sister company Rondal and its partners are applying various innovations to the yacht's integrated sail handling system, such as carbon captive winches, and a state-of-the-art Panamax carbon rig to optimize the performance of project 405.

The rig is developed with structured luff sails in mind from the outset: reducing the load on the hardware means that it can be significantly lighter, as well. This will be the first large newbuild yacht to launch with a configuration based on this method of rig design and engineering.

The jib's sail area will be maximized, introducing newly designed, curved spreaders, which will produce a significantly slimmer profile design: aesthetically pleasing and providing decreased windage.





Supersized

SAILING YACHTS BY ROYAL HUISMAN



An attractive (and possibly even better) alternative to large motoryachts

Why?

Read the article at the Royal Huisman website > **News > Inhuis stories & updates** [click here for a link]

THE MARINE ENVIRONMENT: PLAYING OUR PART

All sailors have a strong affinity with the oceans and few can fail to be concerned about their steady degradation...

How can we all play our part to turn this tide around?
Read the article at the Royal Huisman website > **News > Inhuis stories & updates** [click here for a link]



ROYAL HUISMAN & THE NETHERLANDS

The perfect combination

Taking delivery of your own custom superyacht and sailing her to the destinations of your dreams ranks as one of life's most fulfilling experiences. And with the right choice of yard and location, the process of building her can come a close second. Building a custom yacht takes time – time that can, and should be, enjoyed to the fullest: participating in the realisation of your dream, building relationships with the people who bring that dream to life, and at the same time, discovering the cultural and environmental riches of the local region.

Read the article at the Royal Huisman website >
News > Inhuis stories & updates [\[click here for a link\]](#)



PROJECT 403 AND 405 AT ROYAL HUISMAN IN VOLLENHOVE

WHY BUILD AT ROYAL HUISMAN?

Quality, location and culture

You have decided to commission the construction of your new superyacht. Now, you need to decide who will build this ultimate dream for you. There are many factors to consider, and three that stand out are: quality, location, and culture.

Quality, because there is no substitute for excellence, consistency and lasting value, for the possibly most substantial investment that you are ever likely to make.

Location and culture, because ease of access, and a rewarding experience that extends beyond the confines of the shipyard, are pivotal to enjoying a truly fulfilling build process.

Read the article “Why build at Royal Huisman?” at the shipyard's website > **News > Inhuis stories & updates** [\[click here for a link\]](#)

HUISFIT SKILLS

Expertise à la carte

The Huisfit process brings together the exceptional infrastructure, technology and inhouse skills of Royal Huisman and sister company Rondal with leading industry and specialists to provide a bespoke solution for every refit, rebuild and renewal project. All in one competitively tailored package. A detailed overview of these comprehensive skills and potential solutions – Huisfit expertise à la carte – can be found at huisfit.com/skills [click here for a link]



Curious to learn more about Huisfit's comprehensive skills and potential solutions? Please visit huisfit.com [click here for a link] or find the team at

Metstrade Amsterdam | 16 – 18 November
Stand 07.515



The carbon sloop Mini Y (26m / 85ft Baltic Yachts, 2018) departed few weeks ago following their return to Amsterdam for various technical support by Huisfit.

Captain Yusef Bunting comments:

"Following our excellent experience on previous visits to Royal Huisman and Huisfit, it's been a real pleasure to return. The dedicated and highly proficient team ensures the works are carried out with precision and efficiency..."

The full review can be found at huisfit.com/references [click here for a link]



Les Voiles de Saint Tropez 2021

Topaz: Winner Of Class

Congratulations to her owner and to all onboard!
The **43m / 140ft J-class yacht** returned to Huisfit in 2020 and was successfully repaired at her birthplace in Amsterdam. Topaz (Holland Jachtbouw, 2015) is by no means the only J-class project to visit Huisfit in recent years.

Topaz, 2019

Various updates specifically to optimize her regatta performance. Post-Huisfit 2019: Topaz winner of Class at the Superyacht Cup (with a little help from Huisfit).

Lionheart, 2019 - 2020

The project included the inspection and servicing of various board systems; PLC improvements and electronics updates; lighting replacement; work on interior and exterior joinery; deck updates and cosmetic improvements to the hull.

Hanuman, 2020

"As a nearly 12 year-old boat, it needed to be brought up to modern standards. (...) I would not consider a refit anywhere else."

stated **Jim Clark, owner of Hanuman.**

Josh Luckhurst, captain of Hanuman adds:

"The cooperation between the Royal Huisman team and the crew has been the highlight of this 5 month period. Together we have achieved an incredible amount."

Topaz, 2020: return for repairs

Could Huisfit be the smart choice for your J-class too?

refit
good,
huisfit
better!

Welcome back Adèle

The 55m / 180ft classic ketch, which was built by Vitters Shipyard in 2005, returned to Royal Huisman's Huisfit after her extensive refit with extended class survey and inspection in 2015 - 2016. Adèle is now back for various refit and service work including her 15 year survey.

Why Huisfit again? **Adèle's project manager Taco Zwarts**, who is representing the owners together with her captain, tells why they returned in 2021:

“After the previous successful refit by Huisfit, it was clear and very obvious for us. In a nutshell: the Huisfit team is honest and the cooperation is smooth; the technical updates were well executed and of high quality...”

Taco's full comments can be found at huisfit.com/references [click here for a link]

New conversion project for Huisfit in Amsterdam

Athos (Holland Jachtbouw, 2010) arrived at the shipyard's non-tidal deep water quay in Amsterdam mid September. The 62m / 204ft classic schooner returned to her birthplace and will be converted - outside and inside - by Huisfit during a major 2021 - 2022 refit project.

Athos' captain Tony Brookes explains:

“We have chosen Huisfit because they are reputed to be the best in the world....plus Athos was built here!”

INVESTING IN INFRASTRUCTURE

Official re-opening of the largest hall at Huisfit's facilities in Amsterdam. The workshop floor of the 68m / 223ft hall was upgraded during recent months and is now ready to accommodate larger and heavier refit projects.



THE BROADWATER TEAM AND THE NEPTUNE AWARD FOR 'BEST REFIT'

It is not always easy to be objective about the quality of your own work, so we are grateful to independent juries for providing an unbiased measure of achievement. The team at Royal Huisman and Huisfit is delighted to have been honoured with the prestigious "Best Refitted Yacht" award for Broadwater at an exclusive ceremony during the 16th edition of the World Superyacht Awards in Monaco. Warmest congratulations to the owner, owner's team and designer of Broadwater, and grateful appreciation from Huisfit's team for this recognition.

During last year's World Superyacht Awards the shipyard team was equally thrilled to receive the "Best Rebuilt Yacht" award for the restoration of the Herreshoff schooner Vagrant by Huisfit.

Jan Timmerman, CEO of Royal Huisman adds:

" On behalf of the whole team, I would like to say how honoured we all feel on receiving this new award for Huisfit. We are fortunate to have received more than a fair share of such recognition, but we can never be complacent. Our reputation as a shipyard is only as good as the quality of our next project **"**

Curious to read more? Find the article at the Royal Huisman website > **News > Announcements** [click here for a link]

"META MORPHOSIS - The refit of a 1994 Feadship propelled a pedigreed build into the 21st century [...] An intelligent redesign with artistic flair."

Boat International, July 2021



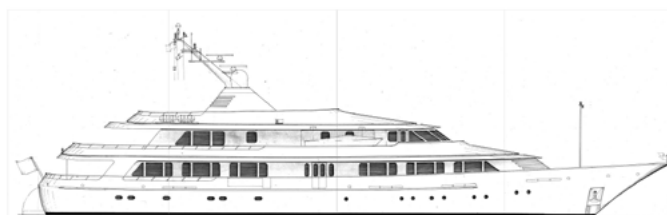


BROADWATER AT ROYAL HUISMAN'S HUISFIT FACILITIES IN AMSTERDAM DURING 2019 - 2020 CONVERSION

The owner of Broadwater:

“This classic, lovely boat deserves another several productive and stylish generations on the water – and that’s what we are giving her.”

Read the full 15-page article by Boat International on the Huisfit website via [this direct link](#) [click here]



BEFORE HUISFIT

FEADSHIP RASSELAS, F. DE VOOGT, DE VRIES AALSMEER, 1994



AFTER HUISFIT

BROADWATER – ORIGINAL LENGTH OF FEADSHIP BROADWATER (FORMERLY RASSELAS): 52M / 171FT. LENGTH AFTER CONVERSION: 56M / 184FT

Huisfit facilities in Amsterdam

At a glance

- Total area: 12,000 sqm / 129,200 ft²
- Located in the heart of the Dutch maritime services cluster: dense network of partners and suppliers
- Non-tidal location with convenient access to North Sea
- Three heated main halls for length up to 68m / 223ft
- Berthing at deep water quay for in-water work
- Located just 20 minutes from Amsterdam city centre and Schiphol airport
- Crew accommodation with offices, houses and apartments at the shipyard
- Access to highly regarded services, expertise and innovation of Rondal (Royal Huisman's sister company): rigs, deck equipment, composites and much more

In summary, Huisfit can accommodate any motor or sailing yacht, 24m / 78ft or 100m+ / 330ft+.

More information can be found at huisfit.com/facilities [click here for a link]



A stunning cruise in the Northern cruising grounds

Combined with a refit by Huisfit?

A refit by Huisfit in Holland introduces an attractive new option to the cruising schedule. As a change from the overcrowded Med and the Caribbean, the Baltic and Norwegian Seas and the coasts of Scotland offer a fantastic diversity of deep-water ports and cruising grounds, steeped in history and tradition, cloaked in natural beauty, basking in long hours of daylight and steady winds. All of this maritime magnificence is easily accessible from Royal Huisman's Huisfit facilities in Amsterdam, offering the prospect of a very special integrated refit-and-cruise plan.

...or a quick stopover in Amsterdam?

Royal Huisman's non-tidal shipyard location with convenient access to the North Sea is also very suitable for a short stopover (and can be combined with shipyard support, if required).

For further information, examples - impressive photos and descriptions - and three introductory cruising options, please visit the Huisfit website > **Facilities > A stopover in Amsterdam** [click here for a link]



SPIIP - 34M / 112FT - GERMÁN FRERS - WINCH DESIGN INTERIOR - ROYAL HUISMAN, 2000 - **THIS YACHT IS AVAILABLE FOR SALE:** [CLICK HERE FOR MORE INFORMATION](#)

For allowing the use of photos special thanks to owners, representatives and crew of Royal Huisman and Huisfit yachts Adèle, Aquarius, Athos, Arcadia, Atlantide, Broadwater, Mini Y, Ngoni, PHI, project 404, 405, 406, 408, Ravenger, Sea Eagle II, Skat, Spiip, Topaz as well as Carlo Baroncini, Boat International Media, Breedmedia, Cor D. Rover Design, DutchYachting, Luc Hardy, Michael Kurtz Photo / Pantenius, Malcolm McKeon, Priska van der Meulen, Nauta Design, Tom Nitsch, Tom van Oossanen, Guillaume Plisson, Rene Pors, Guillaume de Ramel, Reklatekst, Sailing Energy (for Rondal), Ton Schulten, The Superyacht Group, ThirtyC Design and Vripack Design.