



# PRODUCT MANUAL

## SEADRIVE ELECTRIC POD DRIVELINES



## TABLE OF CONTENTS

MODULAR POD	4
SEADRIVE SAILDRIVE POD	6
SINGLE HULL POD APPLICATION	8
HOUSEBOAT POD APPLICATION	10

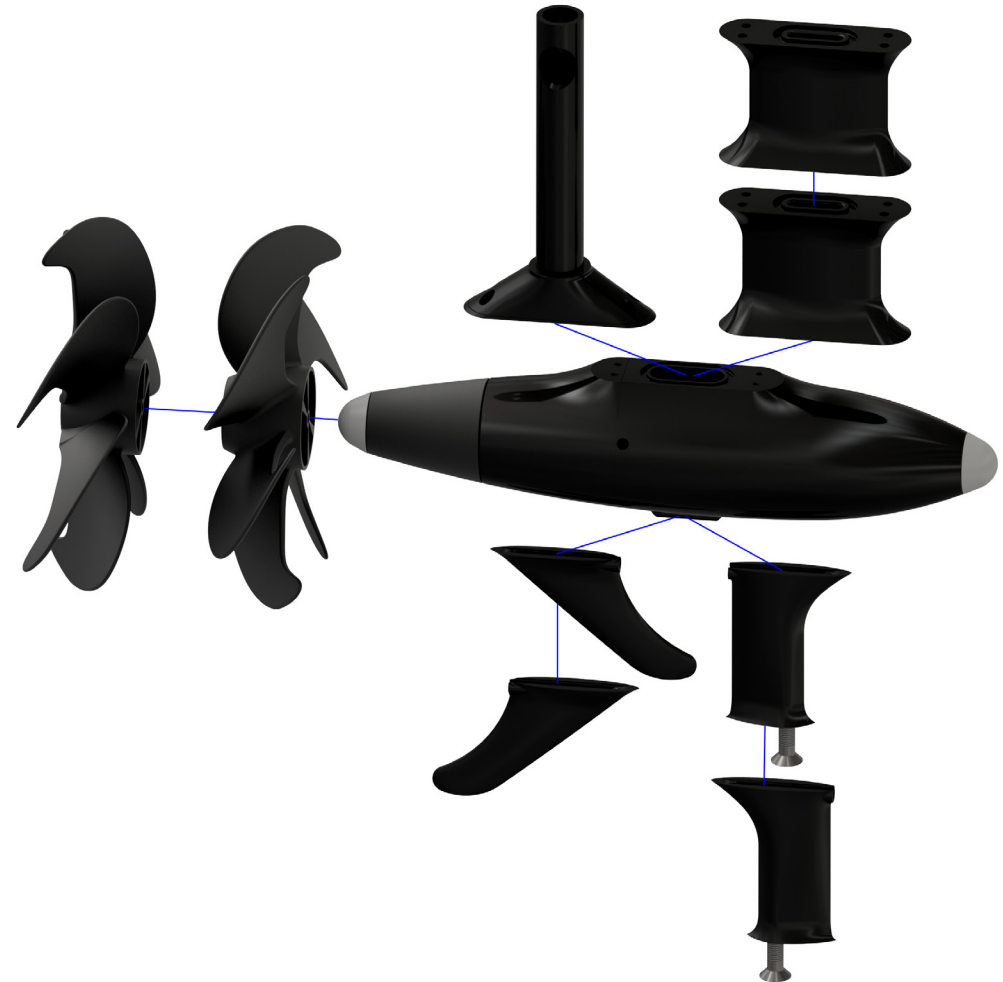
# MODULAR POD

## ABOUT

Our POD design is unique in the way that we have a streamlined, symmetrical, modular concept so that one basis POD unit can be used for all applications. The POD unit can be used as both a puller and pusher, and as a sail drive with folding propeller. The standardized top and bottom interfaces allow the same basis POD unit to be used for all applications just by changing the masts, keels and fastening brackets. Since the 5kW, 10kW and 20kW POD versions all have the same interface, there is only one design for each of the last-mentioned parts. These features revolutionize production cost-effectiveness, but also for our distributors it is a huge advantage as it will considerably decrease storage need. It is also more environmentally friendly as the PODs may be reused for different applications just by adding a mast/bracket if the user need changes.

## POD SPECIFICATIONS

- Three basis version
- Modular construction
- Push and pull version
- Lift-up version
- Variable speed
- Azimuth versions
- Fixed or foldable propeller
- Re-generative versions
- Tablet/PC control
- Noise and vibration damping solution
- Rope/plastic cutting feature option
- Integrated motor controller in housing



## OUR PODS

### POD 5 (coming soon)

48 V Input Voltage

5 kW Power

90 kg Static Thrust

### POD 10 – In sale, delivery Q1 2020

96 V Input Voltage

10 kW Power

160 kg Static Thrust

Aluminum: 26 kg total weight  
(oil-filled, with composite propeller)

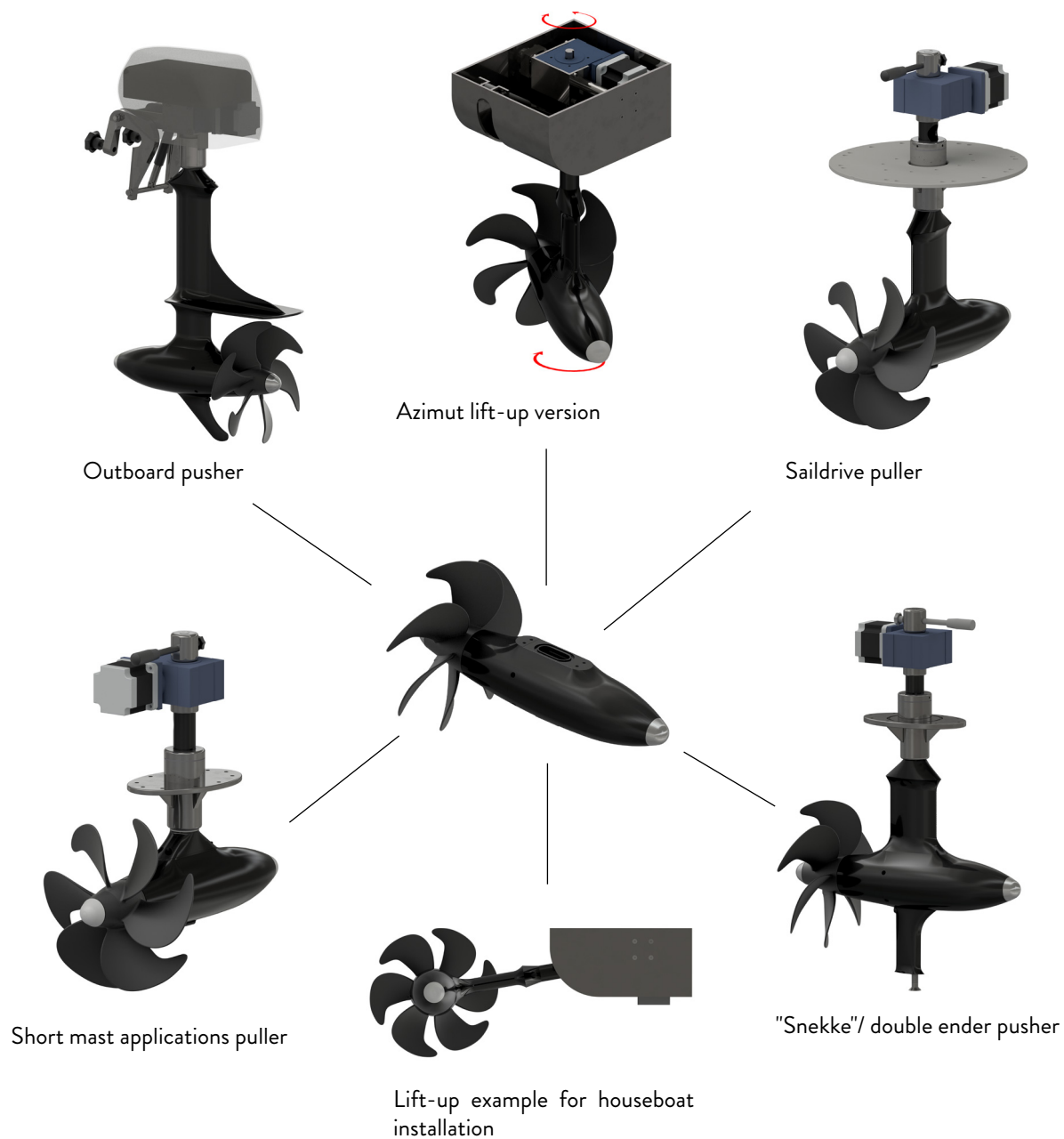
Bronze:

### POD 20 (coming soon)

144 V Input Voltage

20 kW Power

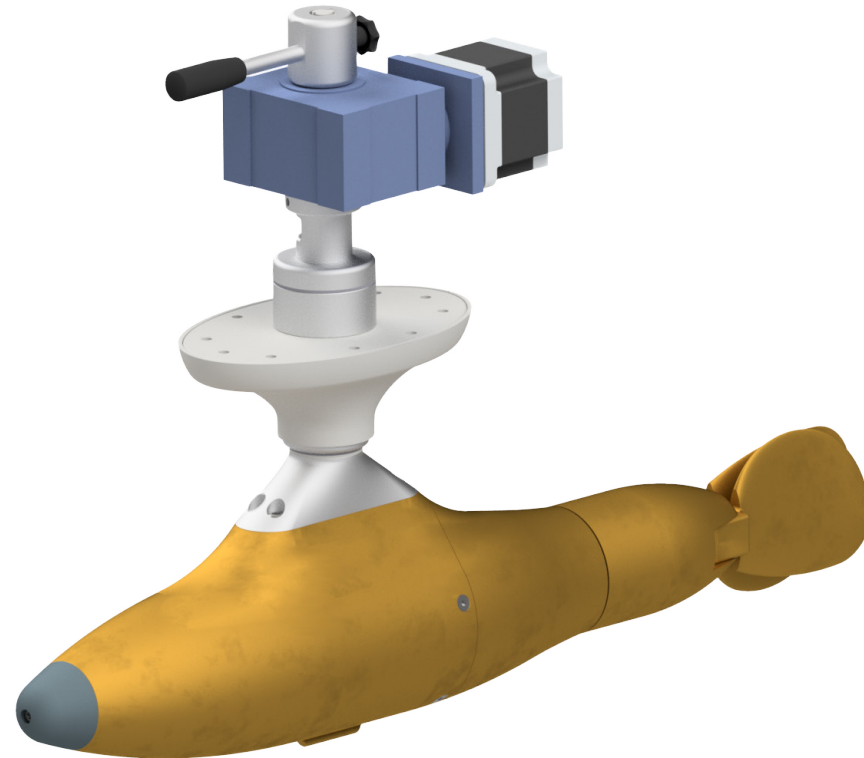
300 kg Static Thrust



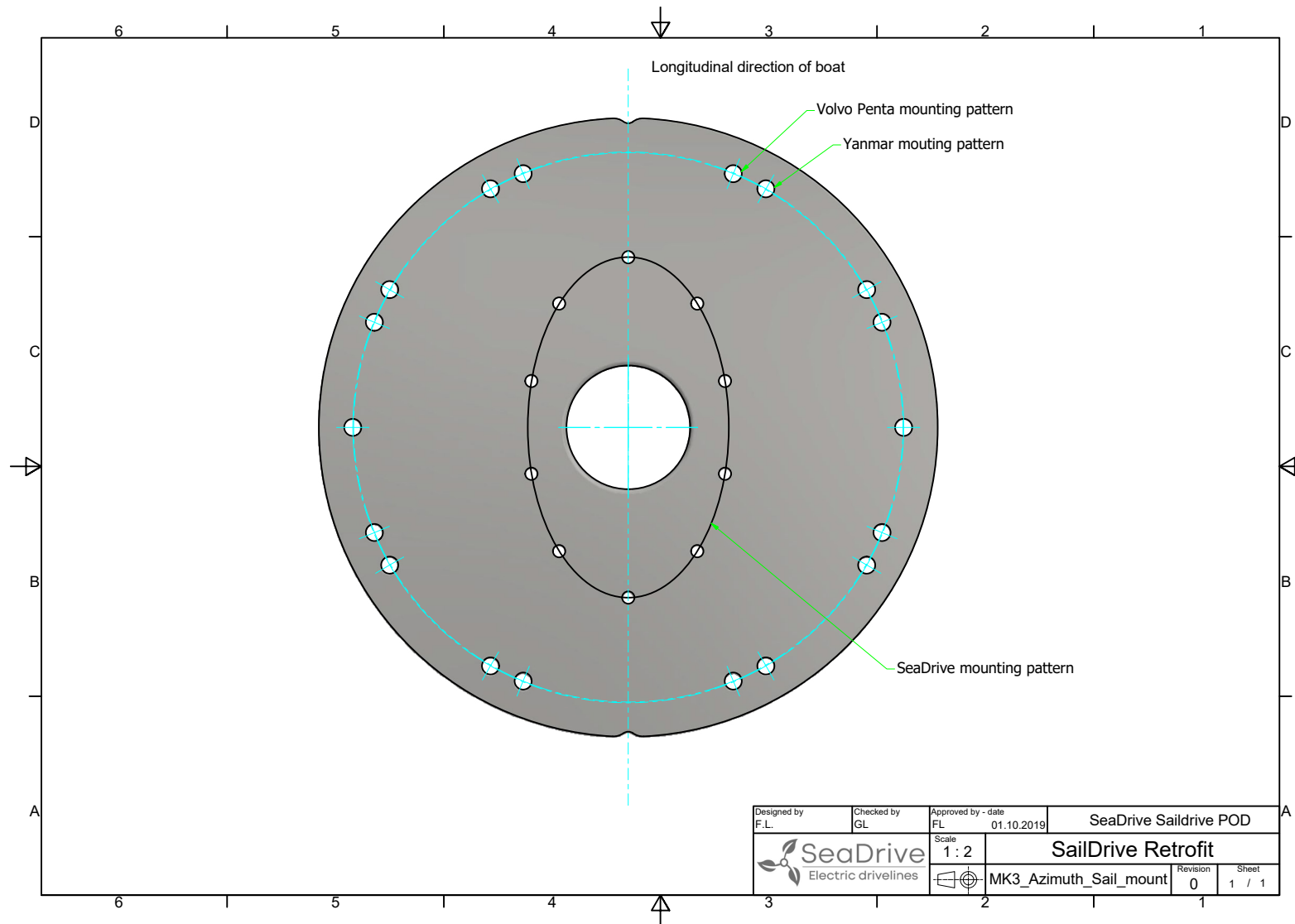
# SEADRIVE SAILDRIVE POD

## POD SPECIFICATIONS

- Azimuth and fixed versions
- 5 kW, 10 kW and 20 kW versions
- Bronze or aluminum housing
- Joystick/tablet control
- Retrofit compatible
- Reliable and low maintenance
- Environmentally friendly
- Low noise and exhaust free
- Extreme manoeuvrability
- Price, weight and space competitive



# SEADRIVE SAILDRIVE RETROFIT



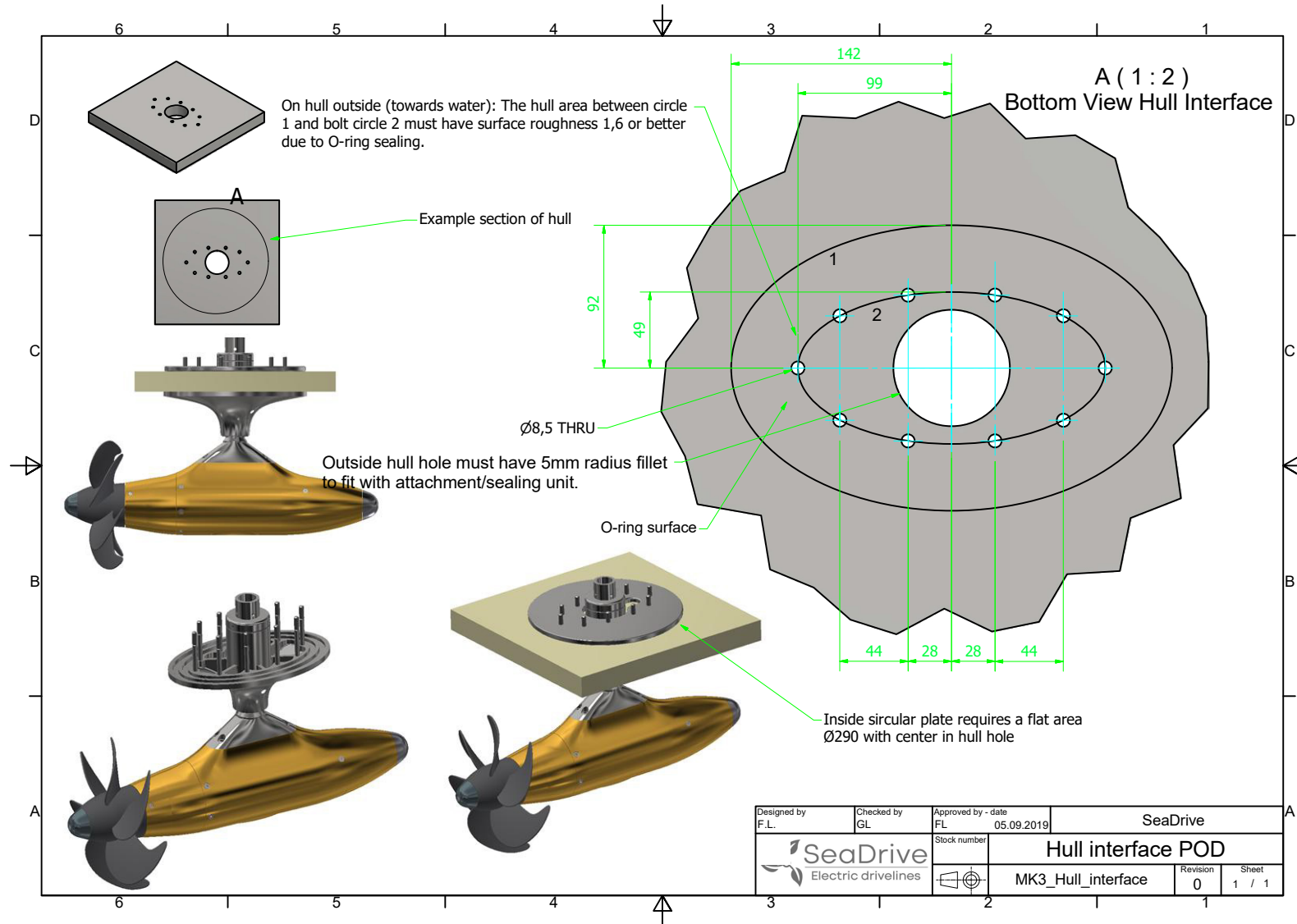
# SINGLE HULL POD APPLICATION





# STRANA BOAT INSTALLATION

## PULLER VERSION



# HOUSEBOAT POD APPLICATION

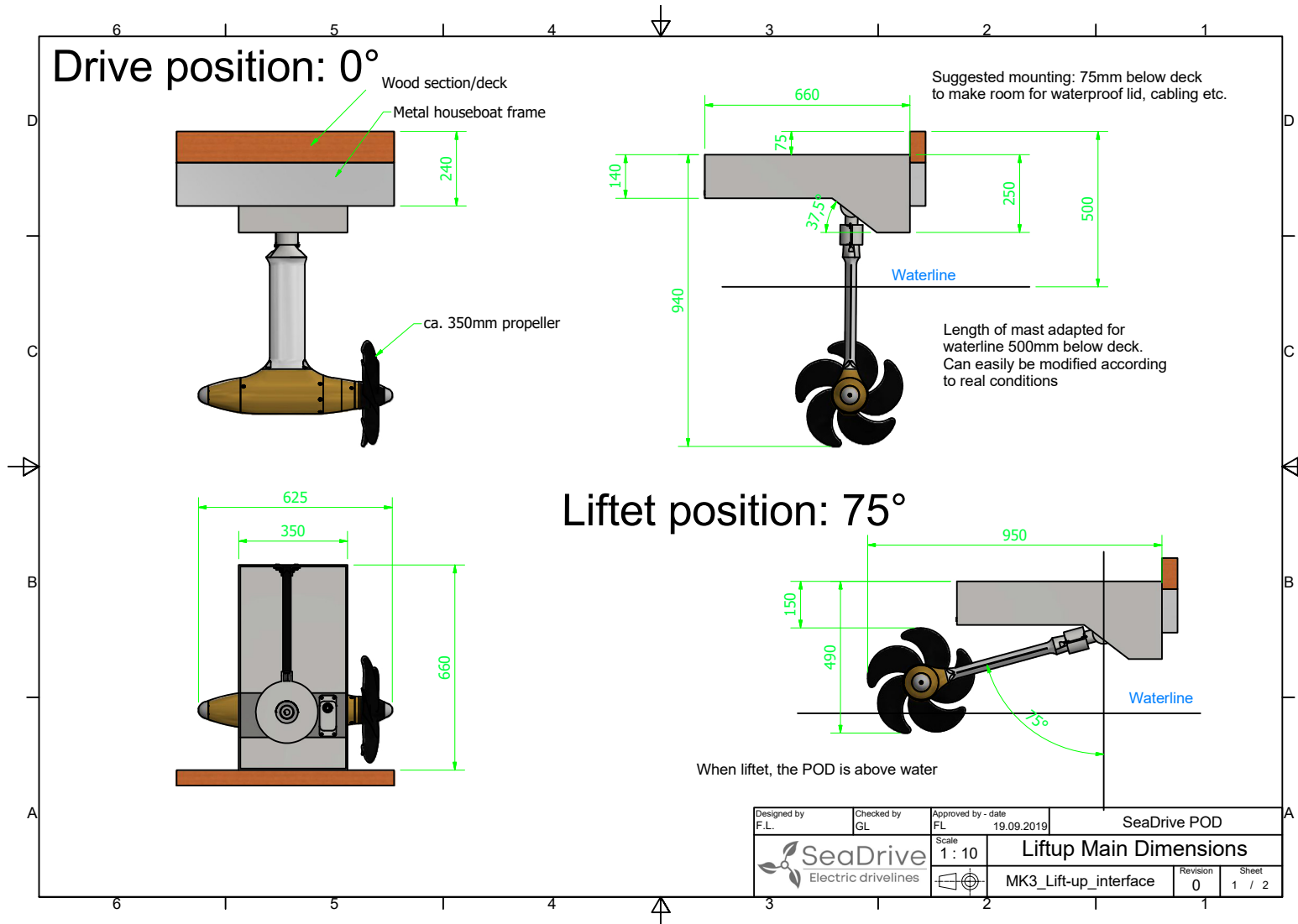
## ABOUT

- 1-4 PODs for unique maneuverability and safety, depending on size and user needs
- Joystick/tablet control, which eliminates the need of today impractical steering console
- Lift-up feature which rises the POD out of the water when not in use to avoid fouling
- All elements (POD, Azimuth system, Battery system, wiring) hidden in watertight compartments inside/under deck
- The Houseboat POD lift-up version is also well suited for larger sail boats (mounted underneath bathing platform), floating restaurants, saunas etc., or other applications where it is advantageous to be able to lift the POD out of the water.



# HOUSEBOAT (OR SIMILAR APPLICATIONS)

## INSTALLATION FOOTPRINT



*“SeaDrive AS holds unique competences within maritime technology. Our products consist of state-of-the-art solutions within electric motors, modular submersible POD concept, motor controllers, steering systems, battery management systems and battery technology”*

**A NORWEGIAN MARITIME ELECTRIC DRIVELINE MANUFACTURER**

**[www.seadrive.no](http://www.seadrive.no)**

