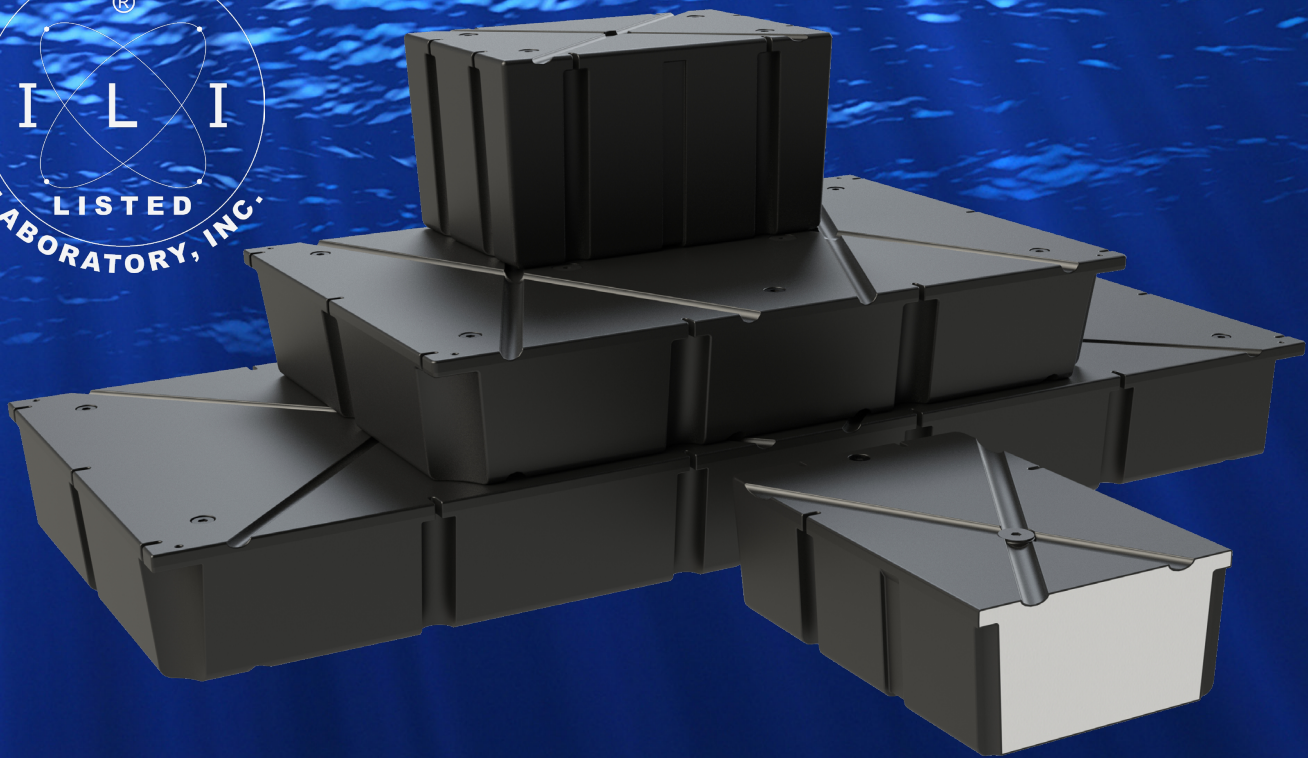


ACE

Roto-Mold Float Drums

BY DEN HARTOG INDUSTRIES, INC.



Den Hartog
INDUSTRIES, INC.



"ALWAYS AT YOUR SERVICE"

Since 1976, Den Hartog Industries has been committed to providing quality products and innovative, industry-leading service solutions with integrity.

History of Den Hartog Industries, Inc.

A reflection on the company's history shows that the same values that founded the company drive the business today.

John J. and Ann Den Hartog purchased J & J Hardware in Hospers, IA, in 1966. For 10 years they enjoyed serving the community but decided that they would like to do even more. On February 9, 1976 they purchased H & S Manufacturing.

Their beginnings with H & S Manufacturing consisted of 6 employees and 3 acres of land. They fabricated metal products for hog operations under the Sowjoy brand. Soon after that, the couple decided to further expand their business by purchasing VW Dock Company in 1977. VW Dock had been a customer who produced boat docks. It was this transition that helped lead the company into plastics with the desire to expand into float drums.

In March of 1990, the company entered into plastic manufacturing with the launch of Ace Roto-Mold Manufacturing, rotationally molding storage tanks for agricultural and industrial use – as well as float drums. They also began molding custom parts for customers in various industries. The VW Dock portion of the business was sold in 1993, but today the Ace Roto-Mold division continues to produce a whole line of marine products including float drums and dock cushions.

The Den Hartogs continued to expand by adding the Ace Injection Molding facility in 1995. Today, the Injection Molding division makes lids and fittings for the Ace Roto-Mold tanks as well as a variety of specialized products for an expanding list of industries.

John J. and Ann always encouraged their children to be involved with the company. In 1998, they were able to pass their growing business to their children, John G. Den Hartog, Barb Truesdell and Julie Henrich.



The second generation of Den Hartogs incorporated H&S Manufacturing and Ace Roto-Mold under one name, Den Hartog Industries, Inc. John G. Den Hartog, President, along with Paul Truesdell, Vice President and Jerry Henrich, Corporate Secretary/Treasurer, are leading the company into the future.

In 2000, Den Hartog Industries, Inc. took another step by adding the Blow Molding division which integrated a third type of plastic processing to its capabilities. They also launched the Ace Dock Accessories brand in 2004, bringing marine products to the retail market.

Today, Den Hartog Industries' four divisions – Ace Roto-Mold, Blow Molding, Injection Molding and Sowjoy – employs over 300 people in facilities in excess of 409,500 square feet. The company-owned fleet of trucks distributes products nationwide and into Canada. For over 40 years, Den Hartog Industries, Inc. has been, and always will be, committed to serving its customers and community by being "Always At Your Service."



TABLE OF CONTENTS


Float Drums	6-7
Roto-Mold Dock Cushions	8
Fold & Go Portable Dock Cushions	9
Dock Harbor Cushions & Dock Corner Cushions	10
Blow-Mold Dock Cushions	11
Mooring Buoys & Hardware	12-13
Boat Lift Tanks	14
Dock Cart & Dock Wheel	15
Ace Dock Accessories	16
VersaFloat & Cylindrical Float	17
Custom Projects	18-19



Den Hartog Industries, Inc
4010 HOSPERS DRIVE SOUTH | PO BOX 425 | HOSPERS, IA 51238-0425

Customer Service/Sales Support: sales@denhartogindustries.com
712.752.8432 | 800.342.3408 | Fax: 712.752.8222

www.denhartogindustries.com

A large, two-story house with a stone retaining wall and a dock on a lake. The house has a prominent stone wall in front of it, and a long dock extends into the water. The water is calm, reflecting the sky and the house. The sky is blue with white clouds. The house has a large deck and many windows. The dock is made of wood and has a ramp leading up to the house. The stone wall is made of large, irregular stones. The grass is green and well-maintained. The trees are tall and green. The overall scene is peaceful and scenic.

"We started using ACE floats in 1994 before it was required by the permitting agencies to use encapsulated flotation on Lake of The Ozarks. We have had great success using ACE floats and during the season when it is required to deliver one of our dock systems in a timely fashion ACE floats are always available when we need to finish a project. I would highly recommend ACE Floats!"

– Nina Gennetten, Ozark Barge & Dock System,
Gravois Mills, Missouri

"When Front Street Shipyard set out to build its new state of the art facility in Belfast, we demanded that all the materials going into the project would be first class. While building out our new marina facility, we decided that first class meant using Custom Float Services and all the products they distribute. We wanted to go with the Den Hartog heavy duty plastic drums because we expect to leave our floats in year round in Maine. This is asking a lot of any product, but we have confidence the drums will be up to the task and provide many years of maintenance free service."

– JB Turner, Front Street Shipyard, Belfast, Maine

WHEN QUALITY MATTERS, ASK FOR ACE

ASTM D1998-06 Falling Dart Impact Test: Validates that virgin grade resin is being used and that the molding process is complete and properly done. When punctured, Ace Roto-Mold Float Drums do not crack or shatter. (Other ASTM Standards that Ace Float Drums are in compliance with include: D1505, D1238, D1693, D638, D790B, D746, D648, D1621, D2863, D696, D3418, D1693A)

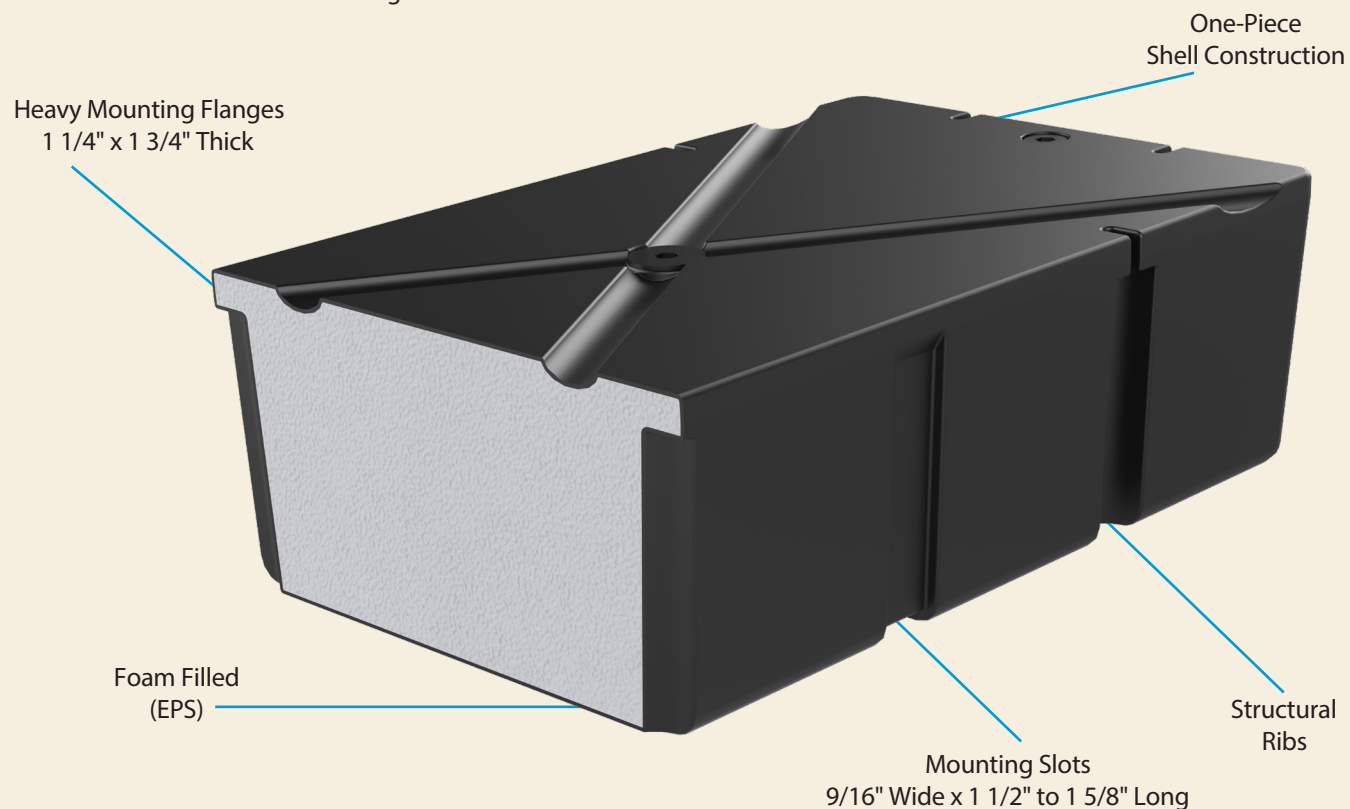
7-Day Hunt Water Absorption Test: Foam fill will aid in maintaining buoyancy if float becomes damaged. Properly steamed foam creates a tight seal which will prevent waterlogged floats and sinking docks. Void-free foam also supports outer shell walls, adding strength. Ace Roto Mold Float Drums meet or exceed the test standard of 3 pounds per cubic foot.

Encasement Wall Thickness Standard: Eliminates weak wall floats with early failure potential and reduces unnecessary repair costs. Ensures floats will hold up to pre- and post-install abuse. Ace Roto-Mold Float drums have a nominal wall thickness of 0.150" and a minimum thickness of 0.125".

Tank Tested Buoyancy Ratings: Calibrated Tank Tested Buoyancy for each model unit is available.

US Army Corp of Engineers Regulation 33CFR Part 327.30: Ace Roto-Mold Float Drums meet or exceed the US Army Corp of Engineers standards under Regulation 33CFR Part 327.30.

15-Year Float Drum Warranty: Ace Roto-Mold offers a 15-Year Float Drum Warranty on all of its manufactured float drums to the original owner.



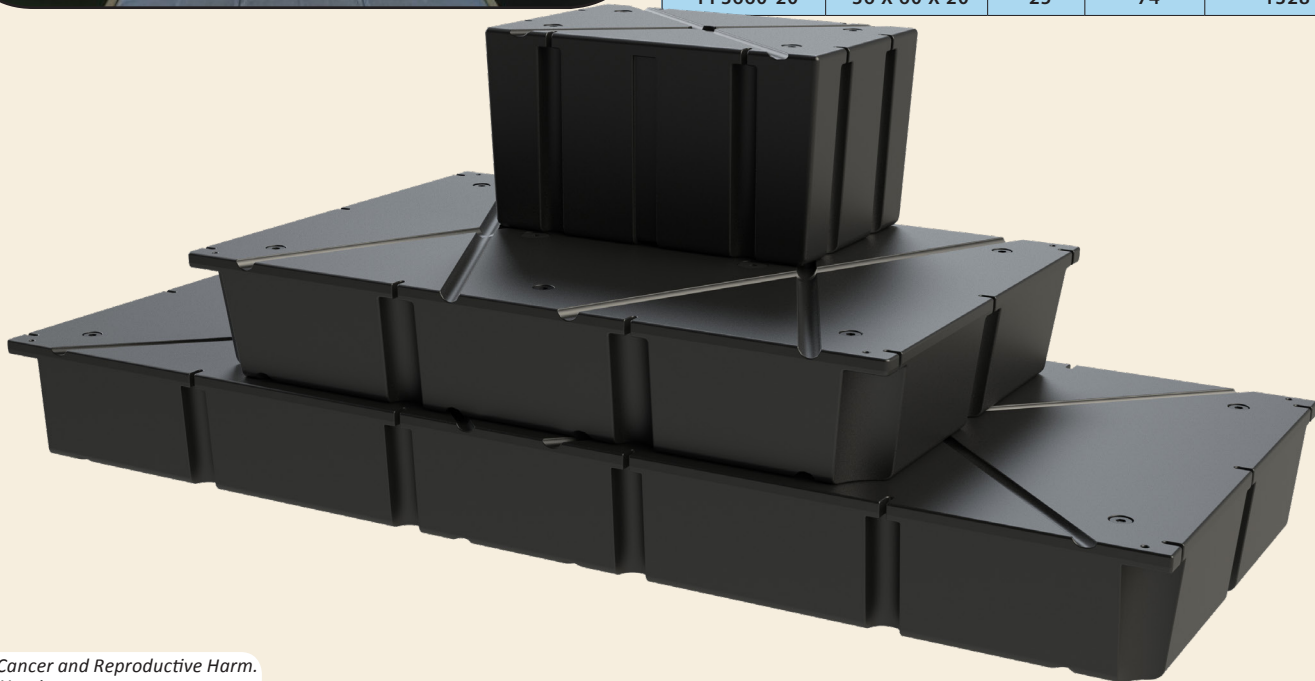
Meeting Your Project Buoyancy Needs

Ace Roto-Mold foam-filled Float Drums offer durable flotation for a variety of new or existing dock systems. The plastic exterior, one-piece, seamless shell design prevents leakage and separation caused by weak joints. The drum wall is made of tough virgin polyethylene with UV inhibitors to prevent damage from the sun, debris, oil, gas, marine organisms, salt and fresh water. A nominal wall thickness of 0.150" and a minimum thickness of 0.125", offers a stronger, more durable float. The top of the shell is flat with molded-in mounting slots for easy attachment to any dock frame.

The interior of the float drum is filled with expanded polystyrene (EPS) foam. The foam is steam-pressured for a tight fit that provides the highest reserve buoyancy possible. The foam interior provides flotation if the outside shell becomes punctured and is continually tested to meet or exceed the 7-Day Hunt Water Absorption Test standard of 3 pounds per cubic foot. The "Falling Dart" test and ultrasonic wall thickness testing are part of Ace Roto-Mold's quality procedures to ensure the durable, long life of our float drums.



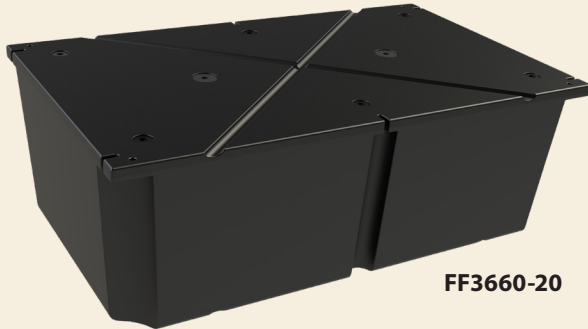
PART NUMBER	SIZE (INCHES) (W X L X H)	CUBIC FEET	WEIGHT (LBS)	BUOYANCY (LBS) (+/-2%)
FF1248-20*	12 X 48 X 20	6.7	27	359
FF1848-36	18 X 48 X 36	18	54	966
FF2072-08*	20 X 72 X 08	6.7	34	360
FF2072-10*	20 X 72 X 10	7.9	38	450
FF2096-10	20 X 96 X 10	11.1	50	592
FF2436-08*	24 X 36 X 08	4	21	211
FF2436-08LF	24 X 36 X 08	4	21	194
FF2436-12*	24 X 36 X 12	6	27	318
FF2436-16*	24 X 36 X 16	8	30	436
FF2436-20*	24 X 36 X 20	10	33	540
FF2448-08*	24 X 48 X 08	5.3	27	288
FF2448-12*	24 X 48 X 12	8	33	433
FF2448-16*	24 X 48 X 16	10.7	39	581
FF2448-20	24 X 48 X 20	13.3	44	729
FF2448-24	24 X 48 X 24	16	50	866
FF2448-36	24 X 48 X 36	24	72	1297
FF2472-12	24 X 72 X 12	12	44	629
FF2472-16	24 X 72 X 16	16	57	796
FF2496-08	24 X 96 X 08	10.7	53	562
FF2496-12	24 X 96 X 12	16	64	866
FF2496-16	24 X 96 X 16	21.3	75	1155
FF2496-20	24 X 96 X 20	26.7	84	1420
FF3648-08	36 X 48 X 08	8	37	429
FF3648-12	36 X 48 X 12	12	45	650
FF3648-16	36 X 48 X 16	16	51	874
FF3648-18	36 X 48 X 18	18	54	990
FF3648-20	36 X 48 X 20	20	62	1088
FF3648-24	36 X 48 X 24	24	66	1280
FF3648-32	36 X 48 X 32	32	82	1644
FF3660-12	36 X 60 X 12	15	58	783
FF3660-16	36 X 60 X 16	20	61	1017
FF3660-20	36 X 60 X 20	25	74	1328



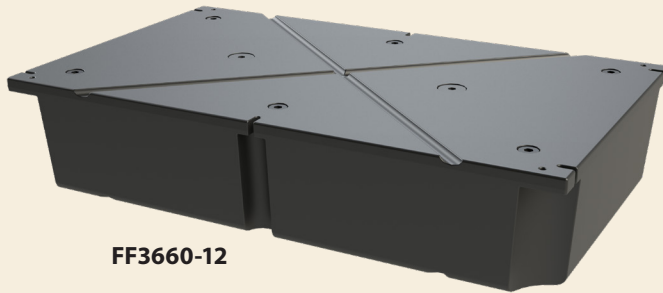
Warning: Cancer and Reproductive Harm.
www.P65Warnings.ca.gov



FF2436-08LF



FF3660-20



FF3660-12




PART NUMBER	SIZE (INCHES) (W X L X H)	CUBIC FEET	WEIGHT (LBS)	BUOYANCY (LBS) (+/-2%)
FF3672-12	36 X 72 X 12	18	62	999
FF3672-16	36 X 72 X 16	24	78	1313
FF3672-20	36 X 72 X 20	30	87	1638
FF3672-24	36 X 72 X 24	36	99	1951
FF3672-32	36 X 72 X 32	48	120	2553
FF3696-12	36 X 96 X 12	24	90	1331
FF3696-16	36 X 96 X 16	32	103	1735
FF3696-20	36 X 96 X 20	40	112	2172
FF3696-24	36 X 96 X 24	48	132	2597
FF3696-32	36 X 96 X 32	64	149	3349
FF3878-12	38 X 78 X 12	20.6	76	1133
FF4272-12	42 X 72 X 12	21	80	1166
FF4272-16	42 X 72 X 16	28	86	1555
FF4272-20	42 X 72 X 20	35	98	1934
FF4848-12	48 X 48 X 12	16	55	878
FF4848-16	48 X 48 X 16	21.3	67	1182
FF4848-20	48 X 48 X 20	26.7	77	1480
FF4848-24	48 X 48 X 24	32	86	1738
FF4848-32	48 X 48 X 32	42.7	108	2231
FF4848-36	48 X 84 X 36	48	114	2480
FF4860-12	48 X 60 X 12	20	73	1101
FF4860-16	48 X 60 X 16	26.7	80	1497
FF4860-20	48 X 60 X 20	33.3	92	1851
FF4860-24	48 X 60 X 24	40	106	2199
FF4860-32	48 X 60 X 32	53.3	130	2815
FF4872-12	48 X 72 X 12	24	78	1369
FF4872-16	48 X 72 X 16	32	98	1823
FF4872-20	48 X 72 X 20	40	111	2225
FF4872-24	48 X 72 X 24	48	123	2701
FF4872-28	48 X 72 X 28	56	141	2940
FF4872-32	48 X 72 X 32	64	154	3457
FF4884-12	48 X 84 X 12	28	89	1510
FF4884-16	48 X 84 X 16	37.3	105	2056
FF4896-12	48 X 96 X 12	32	109	1803
FF4896-16	48 X 96 X 16	42.7	131	2396
FF4896-20	48 X 96 X 20	53.3	145	2996
FF4896-24	48 X 96 X 24	64	163	3578
FF4896-32	48 X 96 X 32	85.3	193	4631
FF48120-12	48 X 120 X 12	40	124	2118
FF48120-16	48 X 120 X 16	53.3	143	3020
FF48120-20	48 X 120 X 20	66.7	177	3692



Tested & Certified by IMANNA Laboratory, Inc. IMANNA (est. 1983) is recognized as an approved laboratory for testing to the industry standards published by the American Boat and Yacht Council and as a Standards Compliance Specialist by the National Marine Manufacturers Association.

- Buoyancy tank tested and certified!
- Ductility tested and certified!
- Water absorption tested and certified!
- Minimum thickness tested and certified!

www.IMANNA.com

 **Warning: Cancer and Reproductive Harm.**
www.P65Warnings.ca.gov

Protect Your Boat and Dock with Ace Dock Accessories. Environmentally safe, Ace Dock products will provide years of use in both fresh and salt water. Our dock cushions are made of tough, durable polyethylene with UV inhibitors. Ace dock cushions are easy to mount, won't scratch or mar boats, and provide high visibility day or night.

Two styles offer customers the choice of FIRM and FLEX to meet installation needs.

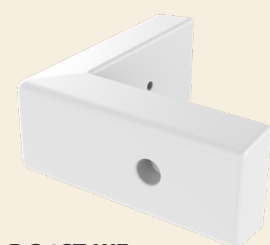
Our durable FIRM cushions are designed to protect your boat by deflecting it away from your dock. Ace's FIRM poly cushion has set the industry standard from the beginning.

FLEX cushions have the feel of vinyl with the added benefit of being more resilient. This material will not pinch or twist and offers the same protection to your valuable investment as the FIRM model.

PART NUMBER	DETAILS	DESCRIPTION	DIMENSIONS (INCHES)
DC-1STF-WE	CORNER CUSHION	CUSHION, FLAT, WHITE #1	12 X 2 1/2 X 5
DC-2ST-WE	FITS 1 5/8" POST	CUSHION, WHITE #2	3 1/2 X 5 X 36
DC-3ST-WE	FITS 2 3/8" POST	CUSHION, WHITE #3	3 1/2 X 4 3/4 X 36
DC-4ST-WE	FITS 3 1/2" FLAT POST	CUSHION, WHITE #4	3 1/2 X 3 X 36
DC-6ST-WE	FITS 2" FLAT POST	CUSHION, WHITE #6	4 1/2 X 1 7/8 X 24
DC-7ST-WE	FITS 2" FLAT POST	CUSHION, WHITE #7	4 1/2 X 1 7/8 X 36
DC-8ST-WE	FITS 2 3/4" FLAT POST	CUSHION, WHITE #8	4 1/2 X 1 7/8 X 36
DC-9ST-WE	FITS 4 1/2" FLAT POST	CUSHION, WHITE #9	4 1/2 X 1 1/2 X 36
DC-10ST-WE	FITS 5" FLAT POST	CUSHION, WHITE #10	5 X 2 1/2 X 36
DC-11ST-WE	FITS 3 1/2" FLAT POST	CUSHION, WHITE #11	5 X 3 X 36
DC-12ST-WE	FITS 2" FLAT POST	CUSHION, WHITE #12	4 1/2 X 1 7/8 X 48
DC-1SOF-WE	CORNER CUSHION	CUSHION, FLEX, WHITE #1	12 X 2 1/2 X 5
DC-2SO-WE	FITS 1 5/8" POST	CUSHION, FLEX, WHITE #2	3 1/2 X 5 X 36
DC-3SO-WE	FITS 2 3/8" POST	CUSHION, FLEX, WHITE #3	3 1/2 X 4 3/4 X 36
DC-4SO-WE	FITS 3 1/2" FLAT POST	CUSHION, FLEX, WHITE #4	3 1/2 X 3 X 36
DC-6SO-WE	FITS 2" FLAT POST	CUSHION, FLEX, WHITE #6	4 1/2 X 1 7/8 X 24
DC-7SO-WE	FITS 2" FLAT POST	CUSHION, FLEX, WHITE #7	4 1/2 X 1 7/8 X 36
DC-8SO-WE	FITS 2 3/4" FLAT POST	CUSHION, FLEX, WHITE #8	4 1/2 X 1 7/8 X 36
DC-9SO-WE	FITS 4 1/2" FLAT POST	CUSHION, FLEX, WHITE #9	4 1/2 X 1 1/2 X 36
DC-10SO-WE	FITS 5" FLAT POST	CUSHION, FLEX, WHITE #10	5 X 2 1/2 X 36
DC-11SO-WE	FITS 3 1/2" FLAT POST	CUSHION, FLEX, WHITE #11	5 X 3 X 36
DC-12SO-WE	FITS 2" FLAT POST	CUSHION, FLEX, WHITE #12	4 1/2 X 1 7/8 X 48

BULK PACKAGING AVAILABLE
ADDITIONAL COLORS AVAILABLE

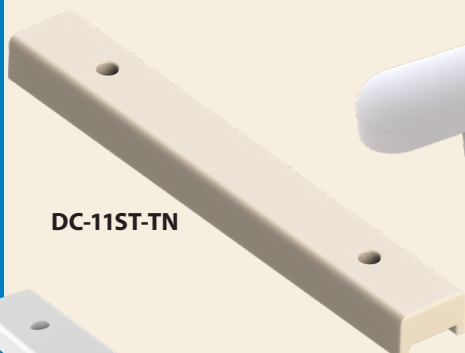
Colors Available



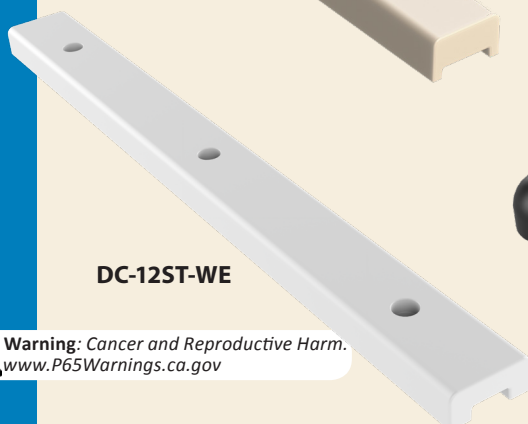
DC-1ST-WE



DC-6ST-WE



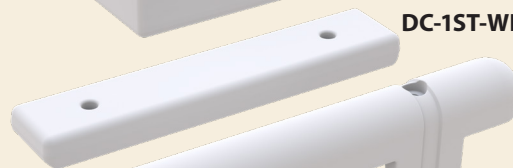
DC-11ST-TN



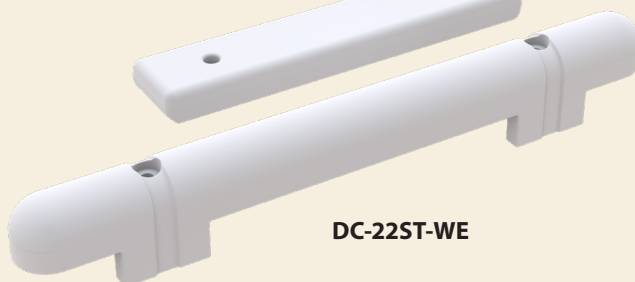
DC-12ST-WE



DC-BM2



DC-1ST-WE



DC-22ST-WE



DC-4ST-BK

DC-7ST-WE



The Unique Design of the Fold & Go

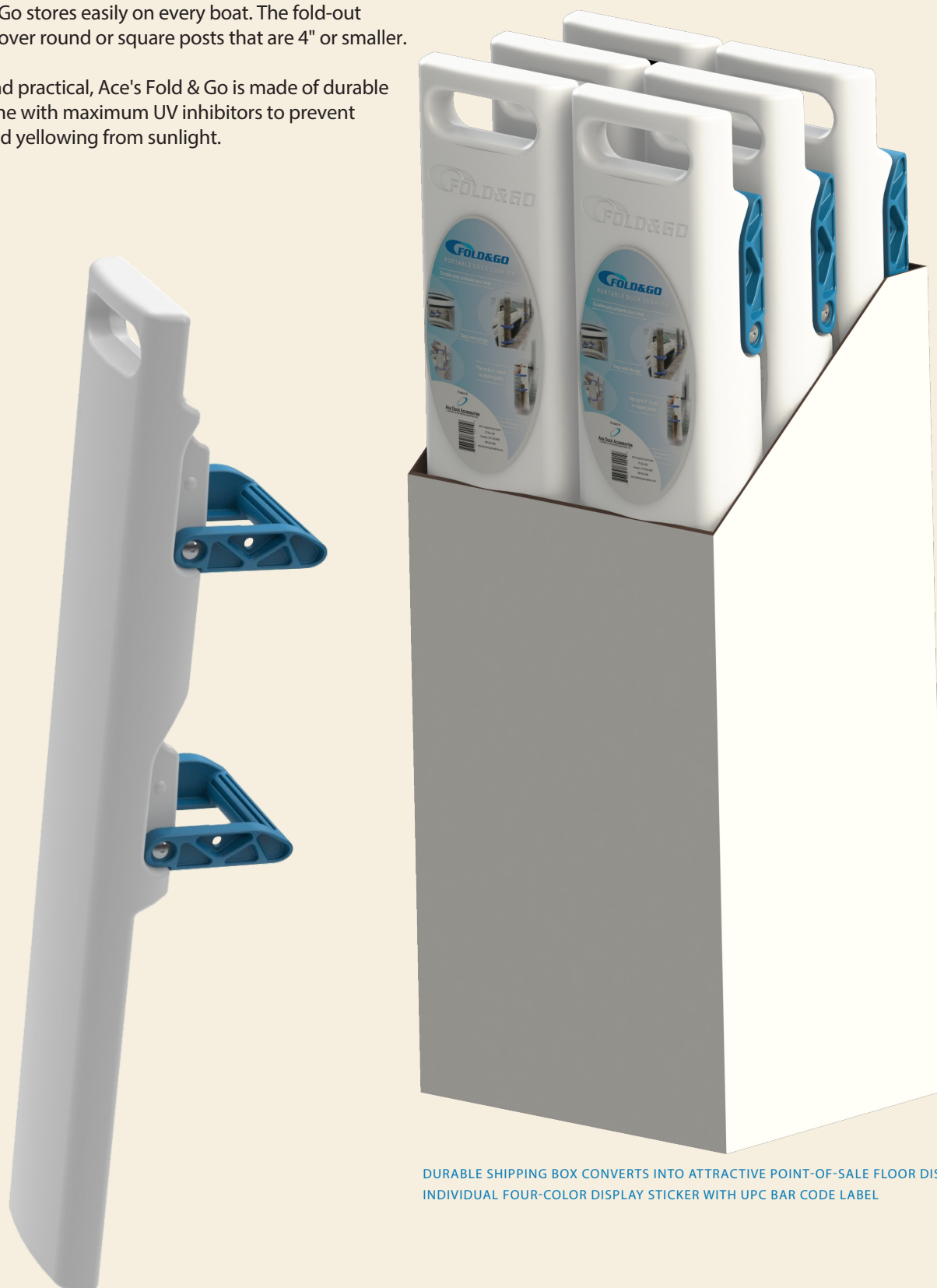
Portable Dock Cushion protects your boat from scratching and scraping against rough posts. It also folds up to allow you to take it with you.

The Fold & Go has a super-sized, cushioned surface that provides maximum protection at the dock or marina.

The Fold & Go stores easily on every boat. The fold-out handles fit over round or square posts that are 4" or smaller.

Portable and practical, Ace's Fold & Go is made of durable polyethylene with maximum UV inhibitors to prevent damage and yellowing from sunlight.

PART NUMBER	DESCRIPTION	DIMENSIONS (INCHES)
FG742-01	1 PIECE/CARTON	40 X 7 X 4
FG742-06	6 PIECES/CARTON	41 X 16 X 13
FG742-60	60 PIECES/PALLET	



DURABLE SHIPPING BOX CONVERTS INTO ATTRACTIVE POINT-OF-SALE FLOOR DISPLAY
INDIVIDUAL FOUR-COLOR DISPLAY STICKER WITH UPC BAR CODE LABEL

Ace Dock Harbor Cushions will provide excellent protection for your larger boat. They are designed with the same durable polyethylene as our other lines of cushions and are environmentally safe and easy to mount. All three sizes are available in FIRM and FLEX varieties.

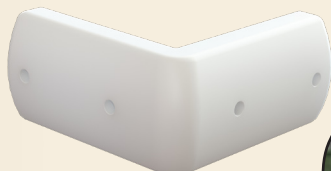
PART NUMBER	DETAILS	DESCRIPTION	DIMENSIONS (INCHES)
DHC-AST-WE	CORNER CUSHION	DOCK HARBOR CUSHION "A" FIRM, WHITE	24 X 5 X 12
DHC-AST-BK	CORNER CUSHION	DOCK HARBOR CUSHION "A" FIRM, BLACK	24 X 5 X 12
DHC-BST-WE	FLAT CUSHION	DOCK HARBOR CUSHION "B" FIRM, WHITE	12 X 5 X 48
DHC-BST-BK	FLAT CUSHION	DOCK HARBOR CUSHION "B" FIRM, BLACK	12 X 5 X 48
DHC-CST-WE	ROUNDED CUSHION	DOCK HARBOR CUSHION "C" FIRM, WHITE	12 X 5 X 48
DHC-CST-BK	ROUNDED CUSHION	DOCK HARBOR CUSHION "C" FIRM, BLACK	12 X 5 X 48

ADDITIONAL COLORS AVAILABLE

Colors Available



DHC-A



DHC-B

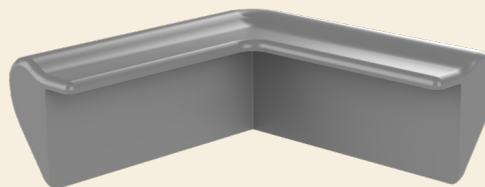
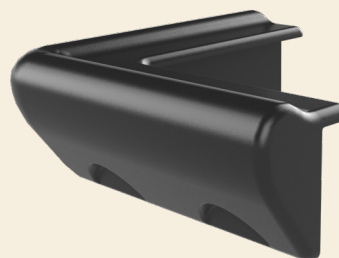
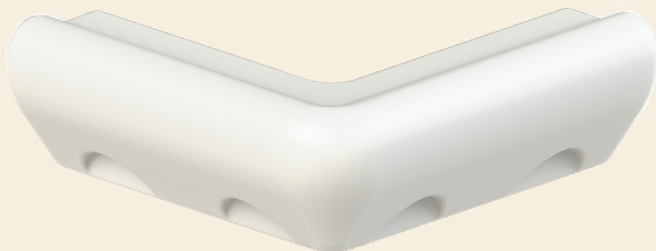


Dock Corner Cushions (also referred to as Dock Bumpers)

are rotationally-molded and designed to be installed on boat dock structures (fixed or floating). These Dock Corner Cushions are constructed from Polyvinyl Chloride (PVC) with compounded UV inhibitors and are intended for the protection of the watercraft when porting or de-porting the dock. The cushions feature top and bottom flanges for fastener installation.

PART NUMBER	DETAILS	DESCRIPTION	DIMENSIONS (INCHES)
DC-CSO-WE	CORNER CUSHION	CORNER CUSHION, WHITE	9.5 X 9.5 X 3.5
DC-CSO-BK	CORNER CUSHION	CORNER CUSHION, BLACK	9.5 X 9.5 X 3.5
DC-CSO-GR	CORNER CUSHION	CORNER CUSHION, GRAY	9.5 X 9.5 X 3.5

Colors Available



Blow-Molded Dock Cushions come in multiple sizes and provide excellent protection for your boat.

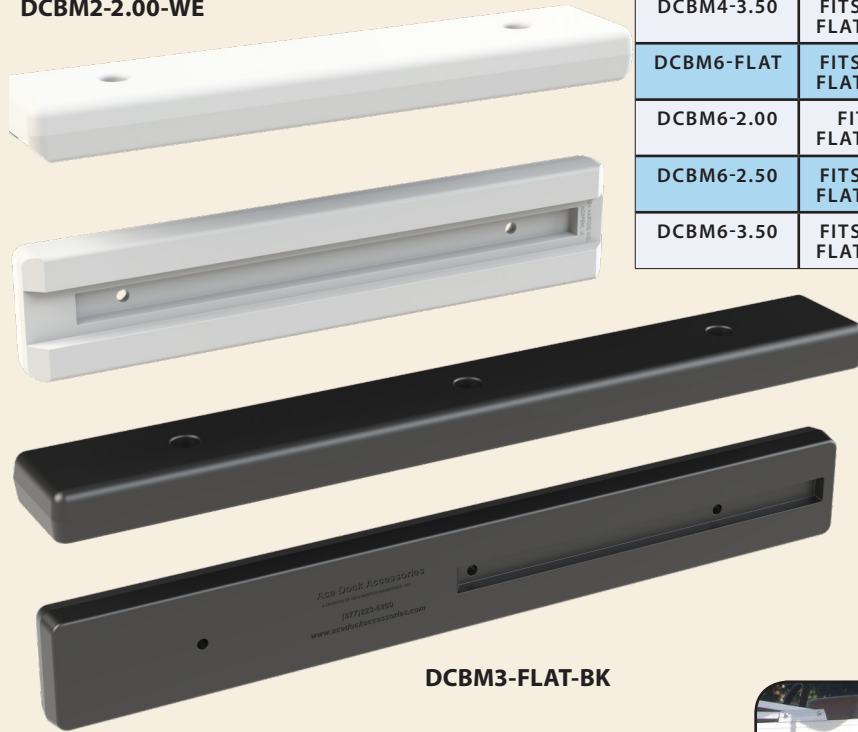
Made of tough and durable polyethylene with UV inhibitors, blow-molded cushions provide exceptional value for customers by offering high-quality black or white options at a competitive price.

Blow-molded dock cushions are offered in 2-foot, 3-foot, 4-foot and 6-foot lengths with a variety of mounting-back options for added installation flexibility.

Colors Available



DCBM2-2.00-WE



DCBM3-FLAT-BK

PART NUMBER	DETAILS	DESCRIPTION	DIMENSIONS (INCHES)
DCBM2-FLAT	FITS 4 1/2" FLAT POST	2" CUSHION, BLOW-MOLD, FLAT BACK	4 3/4 X 2 X 24
DCBM2-2.00	FITS 2" FLAT POST	2" CUSHION, BLOW-MOLD, 2.00" BACK	4 3/4 X 2 X 24
DCBM2-2.50	FITS 2 1/2" FLAT POST	2" CUSHION, BLOW-MOLD, 2.50" BACK	4 3/4 X 2 X 24
DCBM2-3.50	FITS 3 1/2" FLAT POST	2" CUSHION, BLOW-MOLD, 3.50" BACK	4 3/4 X 2 X 24
DCBM3-FLAT	FITS 4 1/2" FLAT POST	3" CUSHION, BLOW-MOLD, FLAT BACK	4 3/4 X 2 X 36
DCBM3-2.00	FITS 2" FLAT POST	3" CUSHION, BLOW-MOLD, 2.00" BACK	4 3/4 X 2 X 36
DCBM3-2.50	FITS 2 1/2" FLAT POST	3" CUSHION, BLOW-MOLD, 2.50" BACK	4 3/4 X 2 X 36
DCBM3-3.50	FITS 3 1/2" FLAT POST	3" CUSHION, BLOW-MOLD, 3.50" BACK	4 3/4 X 2 X 36
DCBM3L	FITS 3 5/8" FLAT POST	3" CUSHION, BLOW-MOLD, L-SHAPE BACK	4 3/4 X 2 X 36
DCBM4-FLAT	FITS 4 1/2" FLAT POST	4" CUSHION, BLOW-MOLD, FLAT BACK	4 3/4 X 2 X 48
DCBM4-2.00	FITS 2" FLAT POST	4" CUSHION, BLOW-MOLD, 2.00" BACK	4 3/4 X 2 X 48
DCBM4-2.50	FITS 2 1/2" FLAT POST	4" CUSHION, BLOW-MOLD, 2.50" BACK	4 3/4 X 2 X 48
DCBM4-3.50	FITS 3 1/2" FLAT POST	4" CUSHION, BLOW-MOLD, 3.50" BACK	4 3/4 X 2 X 48
DCBM6-FLAT	FITS 4 1/2" FLAT POST	6" CUSHION, BLOW-MOLD, FLAT BACK	4 3/4 X 2 X 74
DCBM6-2.00	FITS 2" FLAT POST	6" CUSHION, BLOW-MOLD, 2.00" BACK	4 3/4 X 2 X 74
DCBM6-2.50	FITS 2 1/2" FLAT POST	6" CUSHION, BLOW-MOLD, 2.50" BACK	4 3/4 X 2 X 74
DCBM6-3.50	FITS 3 1/2" FLAT POST	6" CUSHION, BLOW-MOLD, 3.50" BACK	4 3/4 X 2 X 74



The Innovative Design of Ace Mooring Buoys

is easy to recognize. Designed to be durable and attractive, the buoys have several great features and can be personalized with little effort. The hard polyethylene shell has UV inhibitors to keep it looking new. Polystyrene foam fills the shell to provide maximum buoyancy. A PVC tube is molded through the center of the buoy to allow for different hardware options. An injection-molded collar captures the tube on each end and protects the buoy from wear.

Buoys can be used to mark waterways, can be rented to boaters mooring at marinas, or can be used to support the line to which you can anchor your own watercraft.

Buoy Colors Available



Strip Colors Available



Tube through center allows for two hardware options.

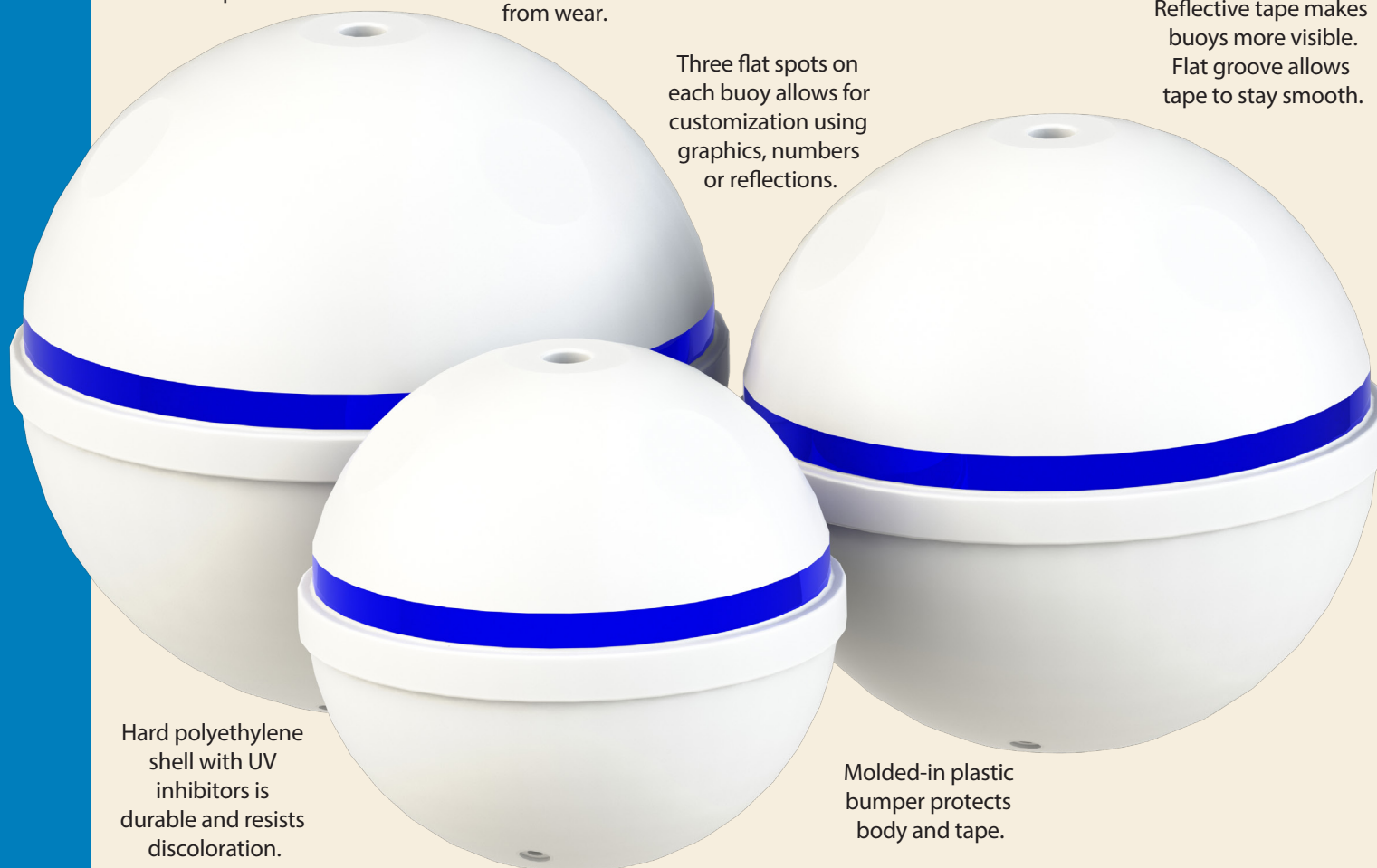
Injection-molded collar fits into PVC tube and protects from wear.

PART NUMBER	DETAILS	BUOYANCY
FFMB-1212	BUOY, 12" BUMPER MOORING FOAM FILLED	12.5 LBS
FFMB-1818	BUOY, 18" BUMPER MOORING FOAM FILLED	51 LBS
FFMB-2424	BUOY, 24" BUMPER MOORING FOAM FILLED	124 LBS
FFMB-3232	BUOY, 32" BUMPER MOORING FOAM FILLED	270 LBS
FFMB-3232RND	BUOY, 32" ROUND MOORING FOAM FILLED	278 LBS
FFMB-3838	BUOY, 38" BUMPER MOORING FOAM FILLED	547 LBS
FFMB-3838RND	BUOY, 38" ROUND MOORING FOAM FILLED	556 LBS
FFMB-4242	BUOY, 42" BUMPER MOORING FOAM FILLED	630 LBS
FFMB-4242RND	BUOY, 42" ROUND MOORING FOAM FILLED	640 LBS
FFMB-P	PASS-THROUGH MOORING SYSTEM	
FFMB-12F	12" FIXED MOORING SYSTEM – BUMPER	
FFMB-18F	18" FIXED MOORING SYSTEM – BUMPER	
FFMB-24F	24" FIXED MOORING SYSTEM – BUMPER	
FFMB-32F	32" FIXED MOORING SYSTEM – BUMPER	
FFMB-32FRND	32" FIXED MOORING SYSTEM – ROUND	
FFMB-38F	38" FIXED MOORING SYSTEM – BUMPER	
FFMB-38FRND	38" FIXED MOORING SYSTEM – ROUND	
FFMB-42F	42" FIXED MOORING SYSTEM – BUMPER	
FFMB-42FRND	42" FIXED MOORING SYSTEM – ROUND	

BUOYANCY IS BASED UPON 100% SUBMERSION

Reflective tape makes buoys more visible. Flat groove allows tape to stay smooth.

Three flat spots on each buoy allows for customization using graphics, numbers or reflections.



Hard polyethylene shell with UV inhibitors is durable and resists discoloration.

Polystyrene foam provides maximum buoyancy.

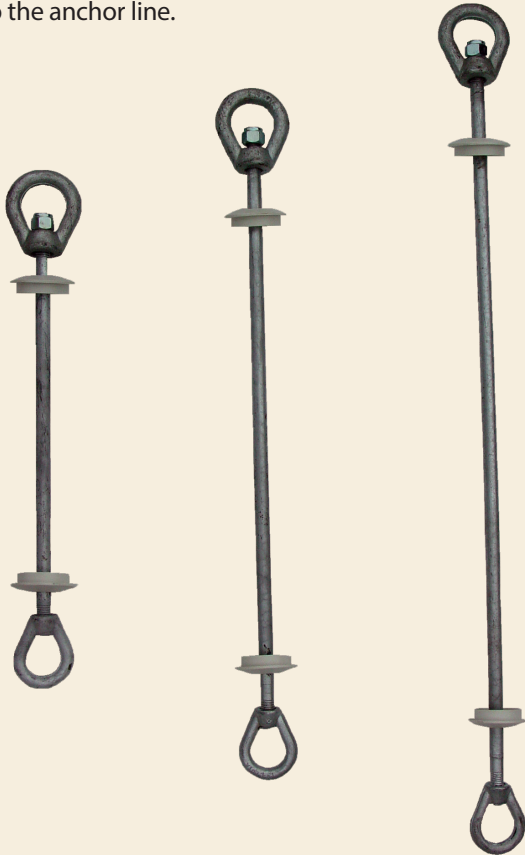
Molded-in plastic bumper protects body and tape.



Warning: Cancer and Reproductive Harm.
www.P65Warnings.ca.gov

1 - Fixed Mooring Hardware Kit

This hardware kit captures the buoy on both ends and provides a swivel at the top for attachment of the anchor line. A loop is provided at the top for handling the buoy and storage of the watercraft pendant line on the buoy. Never anchor the watercraft directly to this loop. The watercraft must be anchored below the buoy and directly to the anchor line.



PART NUMBER	DETAILS
FFMB_12F	12" FIXED MOORING HARDWARE KIT _ BUMPER
FFMB_18F	18" FIXED MOORING HARDWARE KIT _ BUMPER
FFMB_24F	24" FIXED MOORING HARDWARE KIT _ BUMPER
FFMB_32F	32" FIXED MOORING HARDWARE KIT _ BUMPER
FFMB_38F	38" FIXED MOORING HARDWARE KIT _ BUMPER
FFMB_42F	42" FIXED MOORING HARDWARE KIT _ BUMPER
FFMB_32FRND	32" FIXED MOORING HARDWARE KIT _ ROUND
FFMB_38FRND	38" FIXED MOORING HARDWARE KIT _ ROUND
FFMB_42FRND	42" FIXED MOORING HARDWARE KIT _ ROUND
FFMB_P	PASS THROUGH MOORING HARDWARE KIT _ 12" OR 18"



2 - Pass-Through Mooring Hardware Kit

This hardware kit passes through the buoy center tube. The anchor line is attached directly to the line shackle. A bearing plate under the shackle prevents the shackle from passing through the buoy tube. The watercraft's pendant line is fastened directly to the shackle.

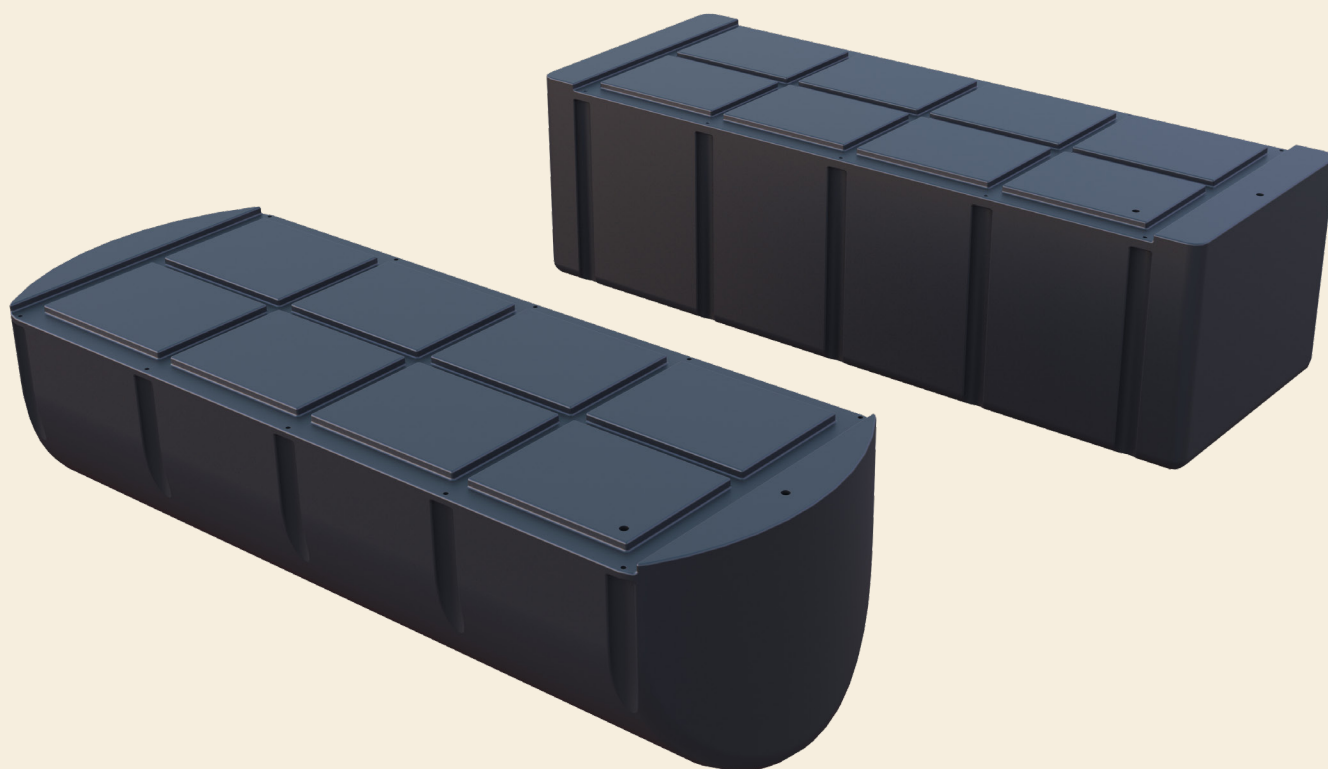


Boat Lift Floats are large air tanks that can be filled with water to submerge them and then re-floated by evacuating the water with air pressure. All boat lift floats come with a wall thickness of .375". Our boat lift floats were initially designed for manufacturers of boat lifts, as a mechanism to raise and lower a lift platform. However, many individuals have used these floats to build their own boat lifts.

*Den Hartog Industries, Inc. does not recommend use of this product for any other purpose than that of the intended use as described above.

Our boat lift floats come in eight different sizes with round and square bottom designs. All come with threaded inserts ready for commercial fittings and a large molded-in hold in the bottom for water intake and exhaust. Molded-in mounting slots in the top of each float and molded-in grooves make attaching to a boat lift frame easy.

PART NUMBER	WEIGHT	DIMENSIONS	BUOYANCY
AT2630-60	85	26 X 30 X 60	1000
AT3030-72SQ	104	30 X 30 X 72	2150
AT3030-90	130	30 X 30 X 90	2000
AT3030-90SQ	160	30 X 30 X 90	2600
AT3240-108	200	32 X 40 X 108	3700
AT3240-108SQ	230	32 X 40 X 108	4500
AT3240-144SQ	300	32 X 40 X 144	6600
AT4848-20SQ	93	48 X 48 X 20	1304



The Lil' Lugger Dock Cart is a two-wheel transport cart. The cart provides 7.5 cubic feet of transport capacity and is designed for transporting loads not to exceed 300 pounds total weight. The Lil' Lugger Dock Cart is manufactured from linear low-density polyethylene with UV stabilizers.

- 20" diameter wheels with semi-pneumatic tires with sealed ball bearing support
- Adjustable axle is provided to allow load balance adjustments
- Assembly to frame and wheels is required
- Available in Black, Blue and Green

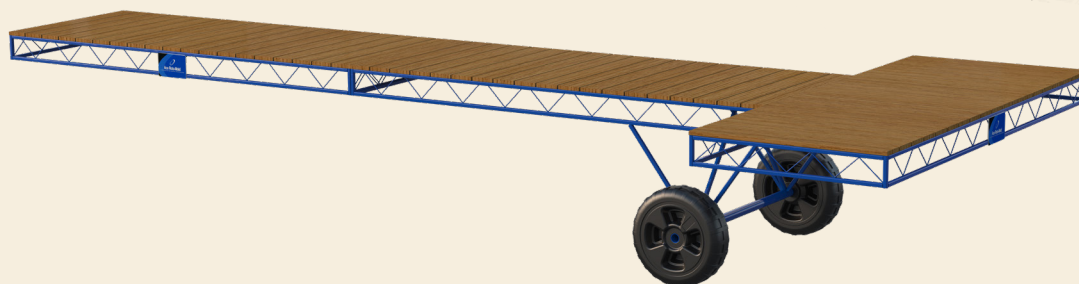
PART NUMBER	CAPACITY	DESCRIPTION	WEIGHT	DIMENSIONS (W X L X H)
UC007.5-28	7.5 CUBIC FEET	STANDARD	54	51 X 28 X 34



The 24" Blow-Molded Dock Wheel is designed to be installed on boat lift or dock structures to facilitate movement. The wheel features structural ribbing for strength, with a center bead for smooth rolling over harder surfaces. The wheel is available with a 2.06" diameter hold for 2" diameter spindles or a 1.97" diameter hole for 1.9" spindles.

All wheels are available with drain back holes in both standard (capacity of 700 pounds) and heavy duty (capacity of 800 pounds). The drain back holes prevent buoyancy and facilitate drainage.

PART NUMBER	CAPACITY	WEIGHT	DIMENSIONS (INCHES)
DWBM-24	700 LBS	11.25 LBS	8.5" X 24"
DWBM-24H	700 LBS	11.25 LBS	8.5" X 24"
DWBM-24HD	800 LBS	14 LBS	8.5" X 24"
DWBM-24HDH	800 LBS	14 LBS	8.5" X 24"



Safety Caps

PART NUMBER	DETAILS
SC-1.00 RD-1	FITS 1-5/16" ROUND PIPE
SC-1.25 RD-2	FITS 1-11/16" ROUND PIPE
SC-1.50 RD-3	FITS 1-7/8" ROUND PIPE
SC-2.00 RD-4	FITS 2-3/8" ROUND PIPE
SC-2.00 SQ-5	FITS 2" SQUARE TUBING
SC-2.50 SQ-6	FITS 2-1/2" SQUARE TUBING
SC-3.00 SQ-7	FITS 3" SQUARE TUBING
SC-4.00 SQ-9	FITS 4" SQUARE TUBING
SC-1.25 X 1.875 RT-8	FITS 1-1/4" X 1-7/8" SQUARE TUBING



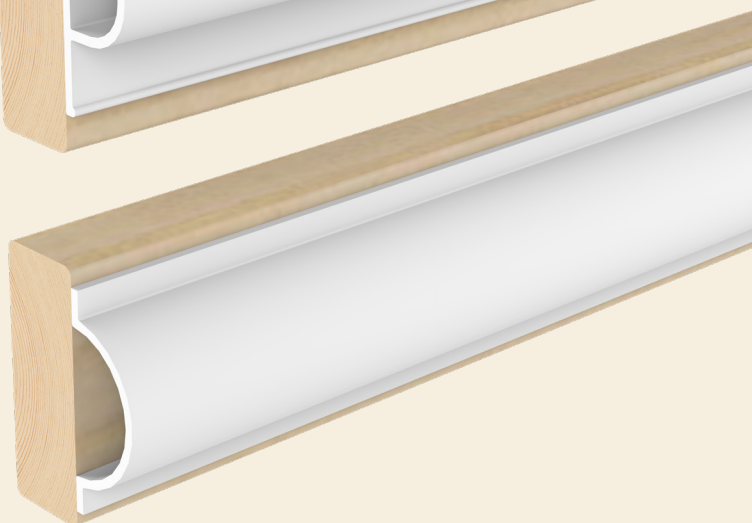
Rub Rails

PART NUMBER	CAPACITY	DESCRIPTION
ACERR-B	"B" RUB RAIL (80 FEET/BOX)	7.5" X 7" X 103"
ACERR-C	"C" RUB RAIL (160 FEET/BOX)	8" X 7" X 100"

ACERR-B



ACERR-C



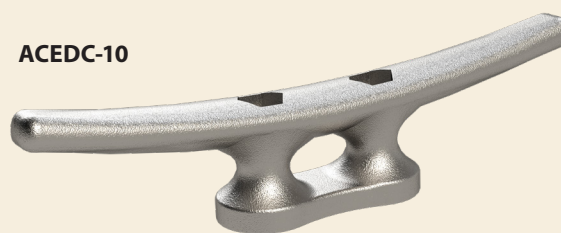
Dock Cleats

PART NUMBER	CAPACITY	DESCRIPTION
ACEDC-08	DOCK CLEAT, 8"	8" LONG
ACEDC-10	DOCK CLEAT, 10"	10" LONG

ACEDC-08



ACEDC-10



Warning: Cancer and Reproductive Harm.
www.P65Warnings.ca.gov

The VersaFloat line of blow-molded float drums are designed to provide a safe and durable means for the support of floating dock systems and feature eight mounting slots for attachment.

The top and bottom of the float are ribbed for strength and the sidewalls are ribbed at each connection point for strength. Den Hartog Industries, Inc. stands behind the VersaFloat float drums with a 15-year warranty (10-year full and 5-year prorated). This blow-molded material is even more puncture-resistant than the rotationally-molded shells. The foam fill is expanded polystyrene (EPS). These floats have been tested in accordance with industry standards and meet Coast Guard specifications.



PART NUMBER	SIZE (INCHES) (W X L X H)	WEIGHT (LBS)	BUOYANCY (LBS) (+/-2%)
FFBM2448-12	24 X 48 X 12	32	413
FFBM2448-16	24 X 48 X 16	40	553



The Cylindrical Float is used as a component when there is a need for wave attenuation. They are typically added to an industrial tire, which is chained side-by-side, and the cylindrical float is the flotation part of the wave attenuation system. Used for wave attenuation as breakwaters, barriers and booms.

PART NUMBER	SIZE (INCHES) (W X L X H)	CUBIC FEET	WEIGHT (LBS)	BUOYANCY (LBS) (+/-2%)
FF2323-24RND*	CYLINDRICAL FLOAT DRUM	22	23 X 24	330



Custom Capabilities allow Den Hartog Industries, Inc. to rotationally-mold and foam fill in a variety of shapes, sizes and colors.







Roto-Mold Float Drums

BY DEN HARTOG INDUSTRIES, INC.



Den Hartog
INDUSTRIES, INC.

Manufactured by Ace Roto-Mold, a Division of Den Hartog Industries, Inc
800.342.3408 | 712.752.8432

Online Product Specifications, Buoyancy Options, Installation Instructions and More!
sales@acefloatdrums.com | www.acefloatdrums.com

Den Hartog Industries, Inc
4010 HOSPERS DRIVE SOUTH | PO BOX 425 | HOSPERS, IA 51238-0425