

DATASHEET DS-DSP-19

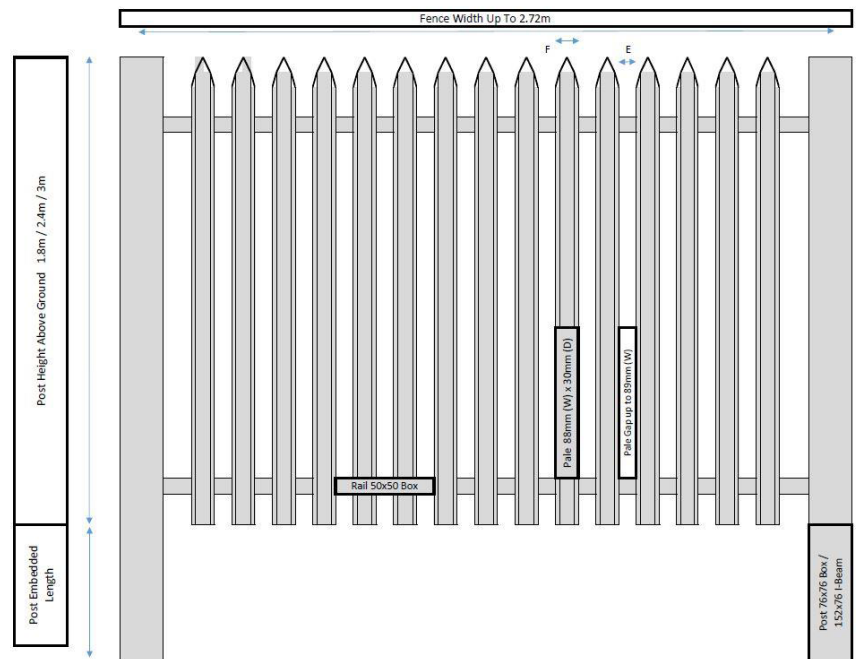
GRP KEEPSAFE PALISADE FENCING SYSTEM



The KeepSafe Palisade Fencing System is our premium alternative to traditional material Palisade Fencing Systems such as steel and timber. It is pre-manufactured in house to suit your exact site requirements, and shipped to site for simple installation.

The non-metallic finish ensures that it is warm to touch, non-conductive, and due to its complete pigmentation throughout does not require painting or powder-coating. All Palisade Fencing Systems components are joined via stainless anti tamper steel nuts, bolts, washers and the system is easily cut when installed on-site.

The system is ideally suited for industrial and commercial applications particularly in harsh environments where its corrosion resistance allows it to out-perform conventional galvanised steel equivalents. The KeepSafe System is tested to meet BS 1722-12:2016:



BENEFITS

- ✓ Lightweight.
- ✓ Non-Conductive.
- ✓ Durable.
- ✓ Fire Retardant.
- ✓ Easy to install.
- ✓ Ideal for larger installations.
- ✓ Warm to the touch.
- ✓ BS EN 13706, E17 / E23
- ✓ BS 1722-12:2016
- ✓ Corrosion resistant.
- ✓ Radar Transparent

The Step on Safety Limited Palisade Fencing comprises of GRP Box Section / I Beam Posts, GRP Box Section Mid Rail, Top Hat Pales. All components are manufactured from pultruded fibreglass structural sections, with a superior surface veil to improve aesthetics.

GRP KEEPSAFE PALISADE FENCING SYSTEM

MATERIAL CHARACTERISTICS



Quality Assurance

Manufactured in accordance with our ISO 9001 accredited Quality Management System, the structural integrity of the specified material is high grade. A suggested life span of 25 years is expected, but not guaranteed, and is based on a number of variables: environmental, installation process, maintenance, loading and traffic conditions.



Slip Resistance

The integral angular quartz gritted surface has been Tested in accordance with BS7976-2 and provides an exceptional level of slip resistance. Lifespan depends on frequency of use.



Chemical Resistance

GRP is resistant to a wide range of chemicals, across a wide temperature spectrum. GRP can be made using different resin systems to achieve specific chemical resistant properties. Please refer to our separate chemical resistance charts DS-DST-10.



Fire Resistance

All products contain a fire resistant additive and comply with Euro Class 1 and ISO11952-2. Performance is equivalent to ASTM E84 class 1 and BS476 part 7class2 flame spread to give a 30 minute burn time.

Keep Safe Palisade Fencing Guide:

Standard Type Reference	Fence Height above Ground	Dimensions						
		Posts		Rails (Horizontal)		Pales		
		Embedded Length	Size of Hole	Length	Suggested Connector Bolt Diameter	Maximum Gap Between Pales, Face-To-View	Oversail	
	m	mm	mm	m	mm	mm	Top mm	Bottom mm
GP 15	1.50	525	350 x 350	2.72	8	89	225	150
GP 18	1.80	525	350 x 350	2.72	8	89	225	150
GP 21	2.10	625	350 x 350	2.72	8	89	275	200
GP 24	2.40	725	350 x 350	2.72	8	89	300	210
GP 30	3.00	925	450 x 450	2.72	8	86	475	380
GP 36	3.60	1125	450 x 450	2.72	8	86	650	550

FOR MORE INFO

Call: 01206 322 899

Email: sales@deck-safe.co.uk

Visit: www.decksafe.co.uk

V2-25.01.2019



DATASHEET DS-DSP-19

GRP KEEPSAFE PALISADE FENCING SYSTEM

Related Products



Hand Rail



Flat Plate



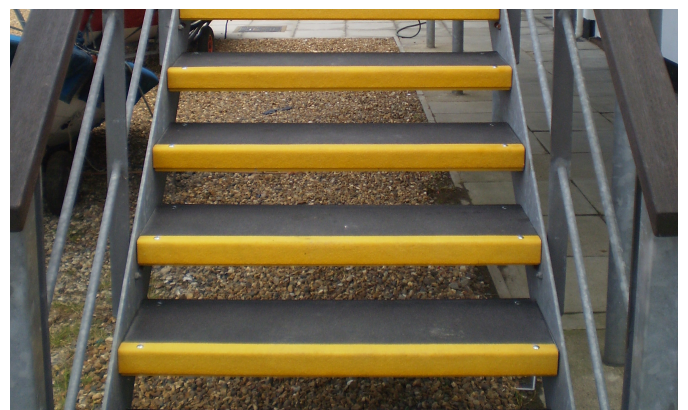
Stairs



Grating



Profile



Stair Treads

FOR MORE INFO

Call: 01206 322 899

Email: sales@deck-safe.co.uk

Visit: www.decksafe.co.uk

V2-25.01.2019