

## GRP ERGONOMIC HANDRAIL SYSTEM



The Ergonomic Handrail System is our premium alternative to the modular Handrail System. It is pre-manufactured in house to suit your exact site requirements, and shipped to site for simple installation.

The Decksafe Limited Ergonomic Handrail System comprises of 50 x 50mm Square box Section Stanchions, a 38mm Diameter Mid-Rail and ergonomic Top Rail, along with an optional kick-plate system.

All components are manufactured from pultruded fibreglass structural sections, with a superior surface veil to improve aesthetics.

The handrail system is ideally suited for industrial and commercial applications, particularly in harsh environments where its corrosion resistance allows it to out-perform conventional galvanised steel equivalents.

The non-metallic finish ensures that it is warm to touch, non-conductive, and due to its complete pigmentation throughout does not require painting or powder-coating. All handrail components are joined via stainless steel rivets, screws or bolts, and the complete system is easily installed on-site.

Ergonomic Handrail System (Floor Mounted)



Top Rail: Mushroom Style  
Stanchion: Box Section  
Mid Rail: Round Tube  
Kick PLate: Corrugated Profile  
Substare Fixing: Pedestal Base

Ergonomic Handrail System (Side Mounted)



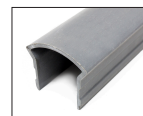
Top Rail: Mushroom Style  
Stanchion: Box Section  
Mid Rail: Round Tube  
Kick PLate: Corrugated Profile  
Substare Fixing: Side Mount via bracket or anchor bolts



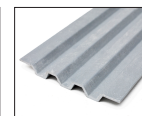
Mid-Tube



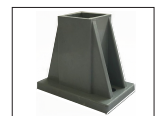
Stanchion



Top Rail



Kick Plate



Box Foot

## BENEFITS

- ✓ **Lightweight.**
- ✓ **Non-Conductive.**
- ✓ **Durable.**
- ✓ **Fire Retardant.**
- ✓ **Colourfast Yellow or Grey.**
- ✓ **Easy to install.**
- ✓ **Ideal for larger installations.**
- ✓ **Warm to the touch.**
- ✓ **BS Compliant BS7818:1985 (0.84 k/N)**
- ✓ **Corrosion resistant.**

V3-25.01.2019

GRP Structural Pultruded Profiles are manufactured by combining a resin matrix with a fibre reinforcement. This is formed and cured in a continuous process creating a product of extraordinary strength and resilience. GRP Structural Pultruded Profiles provide a variety of benefits and mechanical properties matching or exceeding steel equivalents. A wide range of structural profiles are available including U-Channel, I-Beam, Tube, Box, Angle, Rod and

## GRP ERGONOMIC HANDRAIL SYSTEM

### MATERIAL CHARACTERISTICS



#### Quality Assurance

Manufactured in accordance with our ISO 9001 accredited Quality Management System, the structural integrity of the specified material is high grade. A suggested life span of 25 years is expected, but not guaranteed, and is based on a number of variables: environmental, installation process, maintenance, loading and traffic conditions.



#### Slip Resistance

The integral angular quartz gritted surface has been Tested in accordance with BS7976-2 and provides an exceptional level of slip resistance. Lifespan depends on frequency of use.



#### Load Capabilities

Designs are adapted using the various different sizes and type GRP profiles to accommodate the individual applications requirements. Designs are from standard pedestrian / maintenance loads up to vehicular and plant loadings. Decksafe's GRP Hand Railing has been tested to BS7818:1995 (0.84kN).



#### Handling/Cutting

Wear mask and goggles when cutting or grinding. Cover exposed parts of the body. Use diamond tipped or tungsten tipped cutting blades / circular discs. Further cutting instruction available upon request.



#### Chemical Resistance

GRP is resistant to a wide range of chemicals, across a wide temperature spectrum. GRP can be made using different resin systems to achieve specific chemical resistant properties. Please refer to our separate chemical resistance charts DS-DST-10.



#### Fire Resistance

All products contain a fire resistant additive and comply with Euro Class 1 and ISO11952-2. Performance is equivalent to ASTM E84 class 1 and BS476 part 7 class 2 flame spread to give a 30 minute burn time.



#### Hazard Identification.

None by contact. Dust produced by cutting or grinding can penetrate pores and skin causing itching. Avoid breathing dust, skin contact or dust inhalation when cutting. People with a condition that could be aggravated by dust should avoid cutting or grinding.



#### Available Colours.

- Grey
- Yellow
- Bespoke colours on request.



#### Waste Disposal.

Product is not considered a hazardous waste. Abide by local law and procedures.

### FOR MORE INFO

Call: 01206 322 899

Email: [sales@deck-safe.co.uk](mailto:sales@deck-safe.co.uk)

Visit: [www.decksafe.co.uk](http://www.decksafe.co.uk)

V3-25.01.2019



# DATASHEET DS-DSP-02

## GRP ERGONOMIC HANDRAIL SYSTEM



### FOR MORE INFO

Call: 01206 322 899

Email: [sales@deck-safe.co.uk](mailto:sales@deck-safe.co.uk)

Visit: [www.decksafe.co.uk](http://www.decksafe.co.uk)

V3-25.01.2019



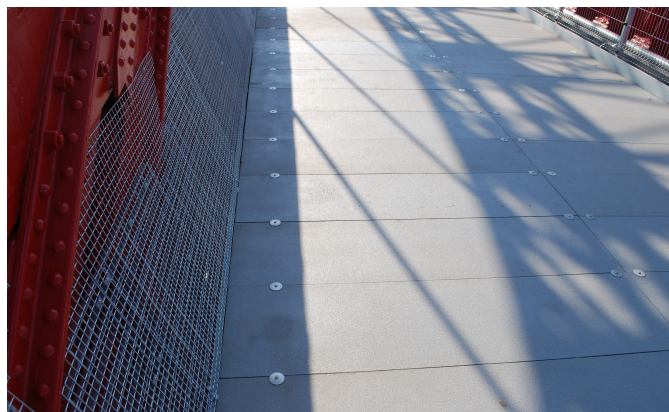
# DATASHEET DS-DSP-02

## GRP ERGONOMIC HANDRAIL SYSTEM

### Related Products



Access Ladder



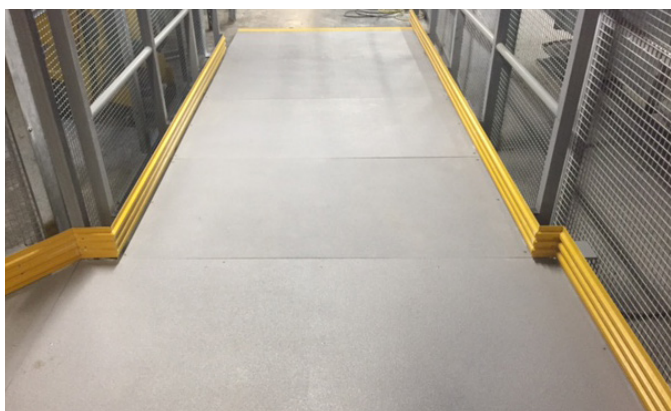
Flat Plate



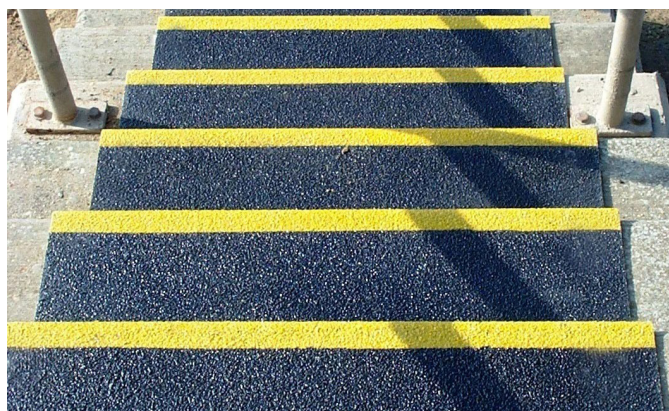
Nosing



Grating



Solid Top



Stair Tread Covers

### FOR MORE INFO

Call: 01206 322 899

Email: [sales@deck-safe.co.uk](mailto:sales@deck-safe.co.uk)

Visit: [www.decksafe.co.uk](http://www.decksafe.co.uk)

V3-25.01.2019