

DATASHEET DS-DSP-20

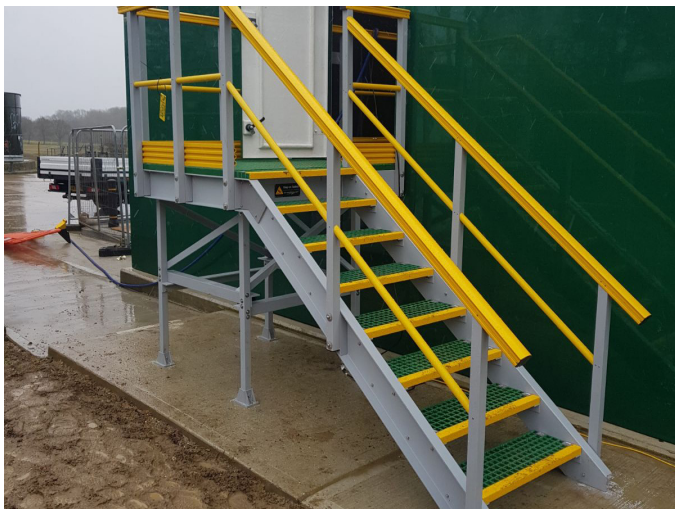
MOBILE & STATIC ACCESS PLATFORMS



Mobile Stairs and Platform

Advanced engineered GRP Mobile and Static Structures, Stairs, Ramps and Platforms are fast becoming the cost effective solution for light and heavy duty environments that require permanent or temporary solutions. A range of highly engineered static and mobile solutions are available to suit a variety of commercial, industrial, marine, rail and waste management applications.

Decksafe's GRP Access Equipment is manufactured to comply with BS 124 specifications, DDA and Equalities Act Compliancy. We offer bespoke, pre-fabrication, flat packed/fully assembled, supply and/or installation services.



Static Stairs and Platform



Static Ramp and Platform

BENEFITS

- ✓ Anti-slip
- ✓ High strength
- ✓ Light Weight
- ✓ Low maintenance
- ✓ Fire retardant
- ✓ Corrosive resistant
- ✓ UV stable
- ✓ Chemical resistant
- ✓ Anti-static
- ✓ Non Conductive

Accessories

Each item is fabricated to suit the individual application. There is a range of add-ons that can be built into the specific design. Some of which can include Self Closing Safety Gates and Chains, GRP Mesh Infill Panels, Removable Hand Rail, Fixed / Swivelling Caster Wheels, Height Adjustable Jockey Wheels, Hinged Access Panels and more.

MOBILE & STATIC ACCESS PLATFORMS

MATERIAL CHARACTERISTICS

Two main components produce composite GRP: polyester resin and glass fibres. There are several types of resin systems depending on the application: Isophthalic, Orthophthalic, Vinylester and Phenolic. Isophthalic and Orthophthalic polyesters are the most widely used resin types and are suitable for most industrial, rail, construction, marine and waste management applications. Phenolic and Vinylester are available by special order.



Quality Assurance

Manufactured in accordance with our ISO 9001 accredited Quality Management System, the structural integrity of the specified material is high grade. A suggested life span of 25 years is expected, but not guaranteed, and is based on a number of variables: environmental, installation process, maintenance, loading and traffic conditions.



Slip Resistance

The integral angular quartz gritted surface has been Tested in accordance with BS7976-2 and provides an exceptional level of slip resistance. Lifespan depends on frequency of use.



Hazard Identification

All Quartzgrip™ Moulded Fibreglass grating is pigmented throughout during manufacture, and does not require any secondary treatment such as powder coating or paint spraying. Standard Stock Colours are Green (RAL6001) Grey (RAL7004) and Beige (RAL1003). Bespoke colours available upon request.



Waste Disposal.

Product is not considered a hazardous waste. Abide by local law and procedures.



Chemical Resistance

GRP is resistant to a wide range of chemicals, across a wide temperature spectrum. GRP can be made using different resin systems to achieve specific chemical resistant properties. Please refer to our separate chemical resistance chart SOS-DST-10.



Fire Resistance

All products contain a fire resistant additive and comply with Euro Class 1 and ISO11952-2. Performance is equivalent to ASTM E84 class 1 and BS476 part 7class2 flame spread to give a 30 minute burn time.



Load Capacities

Designs are adapted using the various different sizes and type GRP profiles to accommodate the individual applications requirements. Designs are from standard pedestrian / maintenance loads up to vehicular and plant loadings. Decksafe's GRP Hand Railing has been tested to BS7818:1995 (0.84kN).



Fire Fighting Measures

Standard extinguishing, water, foam, A, B or C fire extinguishers. Produces black smoke while burning, carbon particles. Use air respirator.

FOR MORE INFO

Call: 01206 322 899

Email: sales@deck-safe.co.uk

Visit: www.decksafe.co.uk

V2-25.01.2019



MOBILE & STATIC ACCESS PLATFORMS

Surface Finish

Surfaces can be manufactured to suit custom requirements, including minimum and maximum coarse grit, smooth gel coat or a natural concave finish.

The different mesh size finished include:

- 38x38mm Mesh (32x32mm Standard Open Mesh)
- 19x19mm Mesh (12x12mm Mini Open Mesh)
- Solid Finish.

Handling/Cutting

Wear mask and goggles when cutting or grinding. Cover exposed parts of the body. Use diamond tipped or tungsten tipped cutting blades / circular discs. Further cutting instruction available upon request.

Available Colours

Decksafe manufacture:

- GRP Structural Profiles for Sub Structures in Grey RAL 7004.
- GRP Hand Railing in Grey RAL 7004 or Yellow RAL 1003.
- GRP Treads & Landing in Grey RAL 7004, Green RAL 6001, Yellow RAL 1003.

However, any RAL colour is available although minimum order quantities apply.

Composition

E Glass fibres (Bio-directional), Stitched Chop Strand Matt, Woven Roving Comb Matt, thermosetting plastic Resin, catalysts, styrene, glass quartz, UV Inhibitor. All components are cured and bonded together.

| GRP Characteristics | Unit | Reference |
|---------------------------|-------------------------------|-----------|
| Voltage breakdown | 18K volts/mm | ASTM D149 |
| Density kg/m ³ | 2100 | BS 476 |
| Thermal Expansion Factor | 13 x 10 ⁻⁶ mm/mmoC | |
| Water Absorption rate | 0.45 x 24 hrs | ASTM D570 |
| Operating Temperature | -100oC to +200oC | BS 476 |

FOR MORE INFO

Call: 01206 322 899

Email: sales@deck-safe.co.uk

Visit: www.decksafe.co.uk

V2-25.01.2019

DATASHEET DS-DSP-20

MOBILE & STATIC ACCESS PLATFORMS



Ramp and Platform



Mobile Steps and Platform



Ladders and Platforms



Up an Over

FOR MORE INFO

Call: 01206 322 899

Email: sales@deck-safe.co.uk

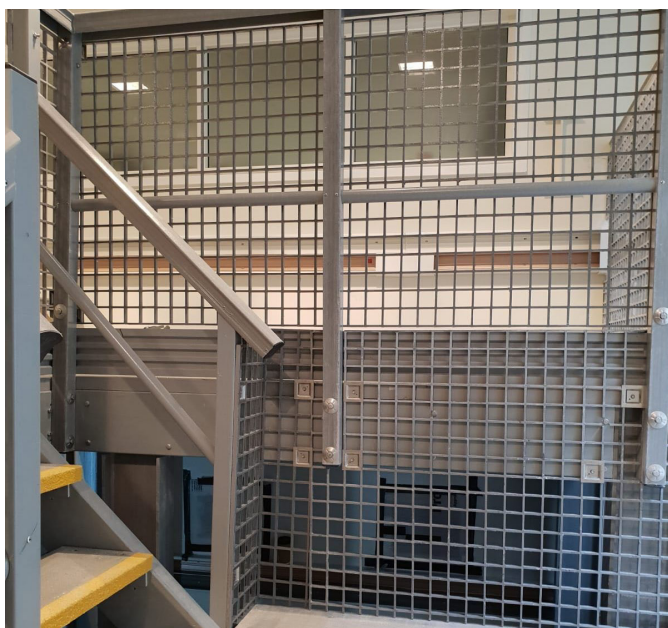
Visit: www.decksafe.co.uk

V2-25.01.2019

DATASHEET DS-DSP-20

MOBILE & STATIC ACCESS PLATFORMS

Related Products



Machine Guard



Kickplate



Grating



Handrail

FOR MORE INFO

Call: 01206 322 899

Email: sales@deck-safe.co.uk

Visit: www.decksafe.co.uk

V2-25.01.2019