

The Experience

Smart future of boating

Contents

Introduction

Welcome to Q Experience!
How the system works?

Q Panel's Applications

Q Panel's Technologies

Powered by Q Experience

Q Switch

What is Q Switch?
Boat Controls app

Q Remote

Q Panel Technical Details

Hardware specifications
Standards
Q Panel 16 Dimensions
Q Panel 10 Dimensions

Welcome to Q Experience!

Q Experience is a smart navigation system that updates boating experience to the modern day. Q ecosystem combines all boat's functions from map to heater into one clear touch screen interface: Q Panel. Clever entertainment and safety features complete the experience.

Q Panel is fitted into the boat as a direct factory installation, and it's contents are customized to meet each boat manufacturers' needs. Q Experience's IoT capabilities help manufacturers follow consumer needs and extend their services. The system communicates with boat's appliances providing both boat owner and manufacturer with valuable information.

Q Experience has been noted in many prestigious competitions, such as DAME Awards and Boat Builder Awards. 2017 Q system was awarded the Best IoT Service in Finland.

DAME
NOMINATED
2016

**THE BEST
INDUSTRIAL
INTERNET / INTERNET-
OF-THINGS SERVICE
IN FINLAND 2017**

How the system works?

Q Panel is connected to boat's appliances through either Q Switch or its NMEA2000 compatible CAN buses. Appliances can be controlled directly through Q Panel's easy-to-use applications. Information like routes and places can be stored both on Q Panel and in the cloud. Q Cloud can be accessed on a smart phone any time, and you can e.g. locate your boat where ever you are.



Q Panel currently comes in two sizes:
Q Panel 16 and Q Panel 10.

Q Panel's applications:



Map



Radar



Fishfinder



Dashboard



Heater



FM & DAB Radio



Weather



Boat Controls



Guides

...and much more

Q Experience is under continuous development. Q Panel is fully NMEA2000 compatible and has 2 CAN buses which makes integrating third-party boat accessories easy.

New extensions and updates can be brought to all Q Panels through an Over-the-Air update. This means that to get the latest features, boat owner only has to accept the new software update when it appears on boat's Q Panel. System will run the update on the background without disturbing other use.

Boating Experience Enhanced by Technology

Q Panel's technologies:



Optimized screen

Polarized, water resistant 3mm screen with optical bonding ensures clear visibility and easy use in all conditions.



Cloud connection

Safely store your routes and places in Q Cloud and share them with friends when you want.



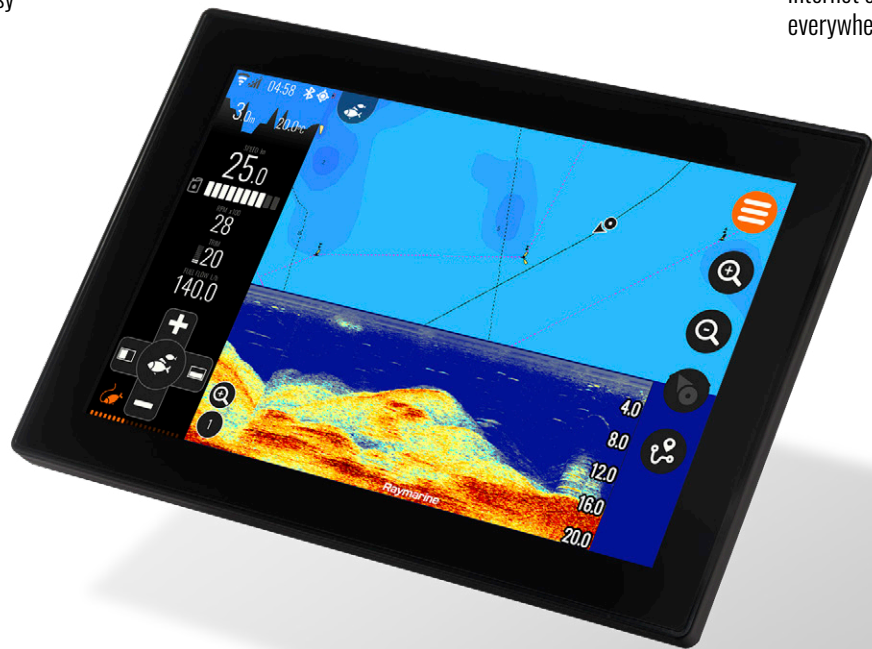
WiFi & hotspot

Internet connection everywhere you go!



Bluetooth

Share music and see the incoming calls on Q Panel.



Remote locking

Lock the Q Panel and locate your boat in a matter of seconds if it ever goes missing.



Q Remote

Use Q Panel's functions through a handy remote controller.



AIS

Receive AIS messages from commercial crafts and see their location on map.



Radar

Compatible with the outstanding Raymarine Quantum Chirp.

Q Panel uses C-MAP 4D maps and supports Over-the-Air map updates, which means that to update your maps or open new areas you don't need to remove the map card.

Q Experience's future road map includes a lot of cool technologies like geofencing, mobile applications and social media integrations. Contact us to learn more!

Powered by Q Experience:

Buster Q

YAMARIN Q

ASKELOADEN C-COMMAND

≡ VITA ≡

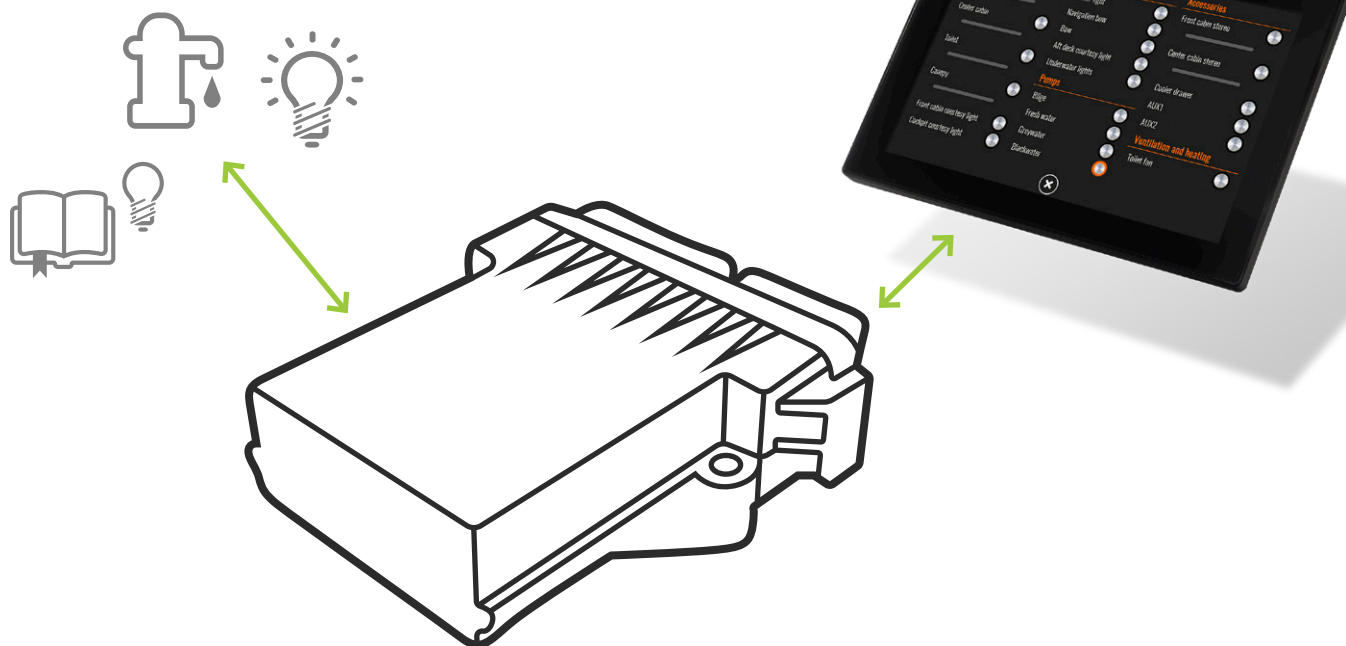
Full Control of The Boat With Q Switch

What is Q Switch?

The Q team wanted to speed the process of developing new boat models and cut the design costs down. This would help new innovations hit the market sooner and make boating accessible for everyone.

As a solution, Q Experience developed their own digital switch for controlling the boat's lighting, pumps and other accessories. Thanks to its clever concept and some cutting edge technology, Q Switch beats the old fashioned solutions both in price and development time.

Boat's appliances, such as lights and fans, are connected to Q Switch that, in turn, is connected to Q Panel. Q Panel has its own Boat Controls app on which you can control each appliance. The app is optimized for quick and easy use for a smooth use experience.



Boat Controls app

Boat Controls app slides over the active application on a single tap, keeping boat's important adjustments always quickly available.

App's content can be customized for each manufacturer and boat model. Updates don't require changes to mechanics, which brings down the development cost.

Q Switch was first launched in 2017 in Askeladden's C83 Cruiser TSI as part of Askeladden C-Command (Askeladden's customized version of Q Experience). The boat along with C-Command became so popular that Askeladden had to increase the production volume right after launch.

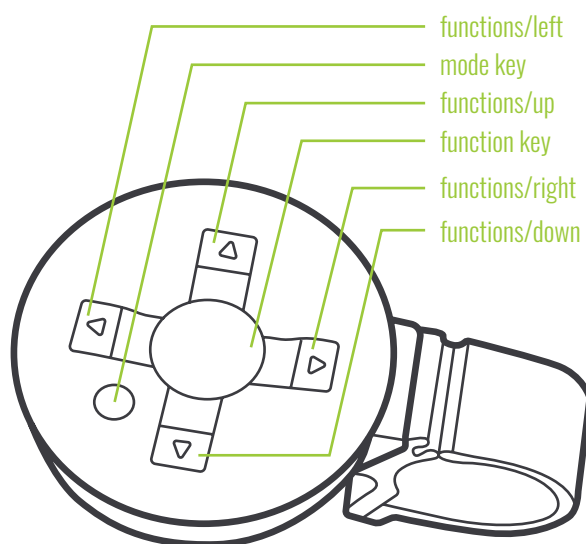
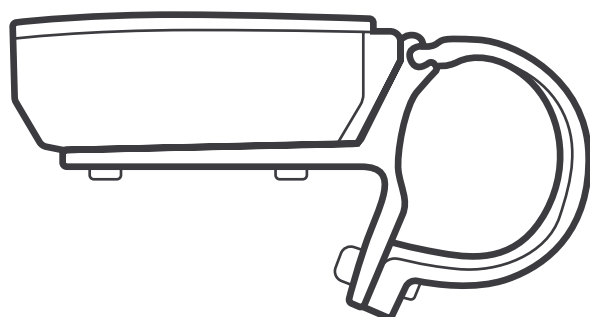


Comfortable use in all conditions

Q Remote is an accessory for the Q navigation system. It allows you to use Q Panel's functions without having to operate the touch screen. Remote controller can be mounted to boat's steering wheel with a sturdy holder.

You can find graphics for Q Remote's controls at the bottom of Q Panel's sidepanel. This allows you to use the same controls even if you don't have a remote. More importantly, Q Panel's graphics make the use of Q Remote intuitive: as you press remote's buttons, the corresponding soft keys on sidepanel are highlighted to give you visual feedback.

Q Remote's ergonomic design allows you to use all the functions on one hand, while the other hand is left completely free. Carefully crafted buttons are easy to use even with gloves on, which makes the Q Remote a must-have for cold and demanding conditions.



Q Remote can be fitted to either side of the steering wheel to cater for both right and left handed users.



Hardware specifications

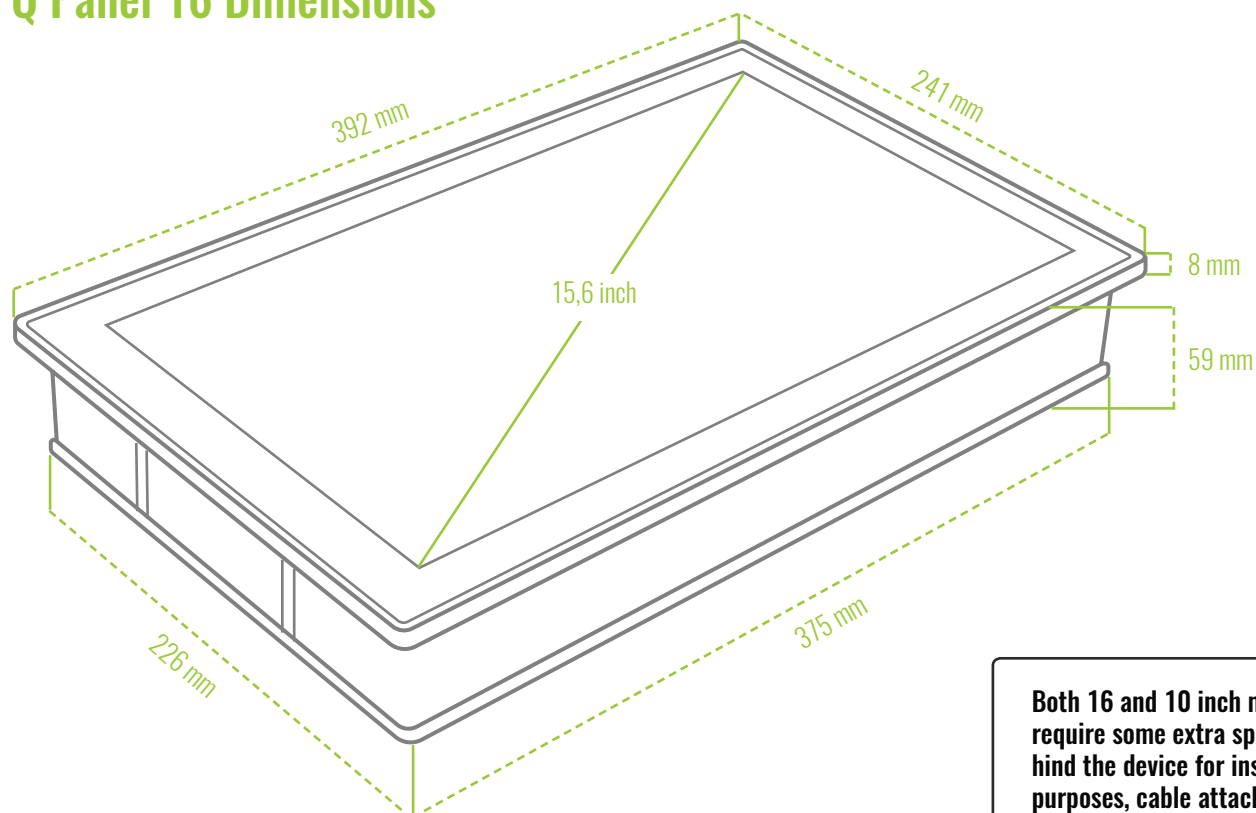
Q Panel 10 and Q Panel 16 are boat mounted multifunction displays with integrated wireless communication and NMEA2000 bus.

	Q Panel 10	Q Panel 16
Display	High-brightness 10.1" optically bonded LCD	High-brightness 15.6" optically bonded LCD
Display resolution	1280 x 800 WXGA	1366 x 768 WXGA
Screen type	Capacitive multitouch, 2.8mm glass	
CPU	Quad-core ARM Cortex-A9 CPU	
Memory	1 GB DDR3 SDRAM, 8GB eMMC flash memory	
Networking	10/100Mb/s Ethernet	
Waterproofing	IP66	
Map card	microSD	
Cellular connectivity	HSPA+ (up to 14Mb/s)	
WiFi	WiFi 802.11a/b/g/n	
Bluetooth	Bluetooth 4.1 (dual-mode Bluetooth & BLE)	
Buses	NMEA2000, secondary CAN	
Radar	Compatible: Raymarine Quantum Chirp	
Sonar	Compatible: NMEA2000 sounder and Raymarine CP100 Fishfinder	
GPS	Built-in GNSS receiver, support for internal and external antenna	
Remote control	Q Remote (BLE)	
Digital switching	Q Switch	
AIS	Compatible: external receiver	
Audio	Integrated FM/DAB+ tuner, Bluetooth audio support, line-level audio output	
Input voltage	12VDC nominal (8-16V)	
Operating temperature	-25°C to +55°C	

Standards

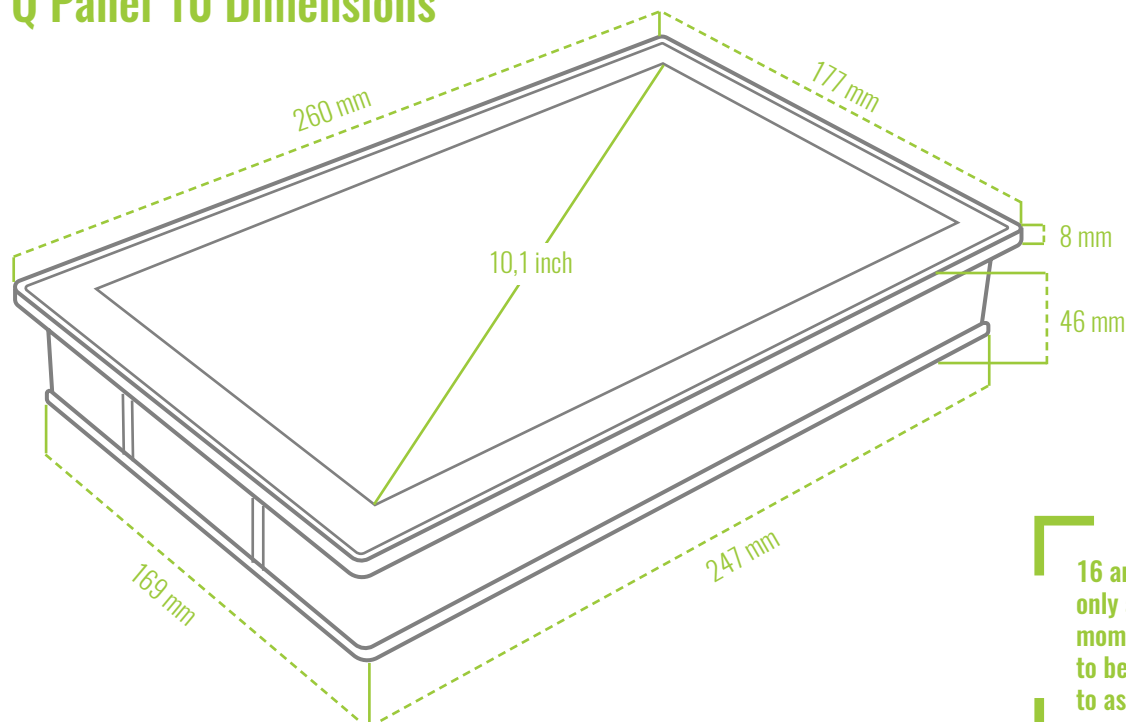
The main device evaluation standard is IEC 60945:2002 (Maritime navigation and radiocommunication equipment and systems) as applicable, device category is exposed. For more information on standards and hardware, please refer to Q Technical Sheet.

Q Panel 16 Dimensions



Both 16 and 10 inch models require some extra space behind the device for installation purposes, cable attachments and possible switching of SIM or map cards in the future.

Q Panel 10 Dimensions



16 and 10 inch are the only available sizes at the moment but they don't have to be! Contact Q Experience to ask about other options.

Quality is an essential factor for Q Experience. That is why all Q devices are assembled and tested by hand at the Q Experience headquarters in Finland before they are shipped to boat manufacturers all over the world.

Experience the future of boating.

The  Experience

The Experience



www.theQexperience.com



The Q Experience



@qexperience