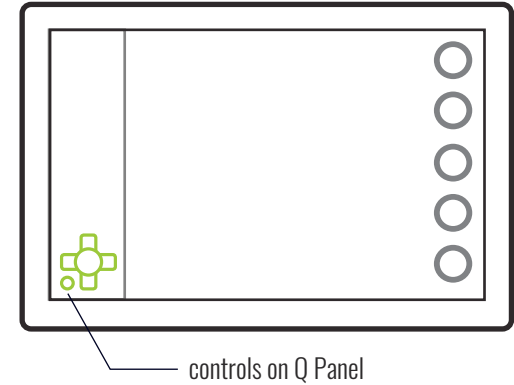
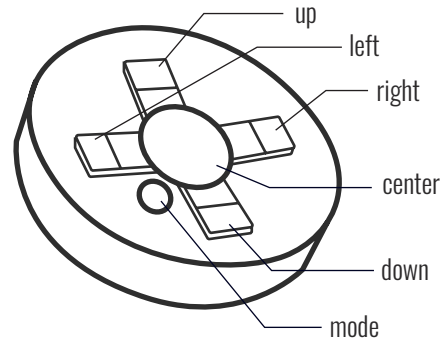


## Congratulations, you now have a Q remote controller!

**Q Remote** is an accessory for the Q navigation system. It allows you to use Q Panel's functions without having to operate the touch screen. Remote controller can be e.g. mounted to boat's steering wheel with an easy-to-use holder.

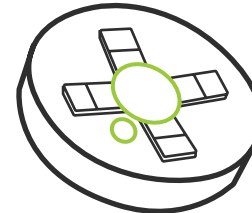
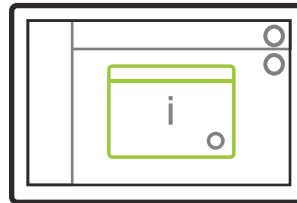
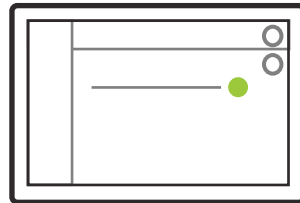
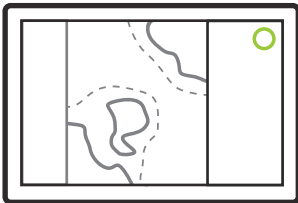
Q Panel's sidepanel has exactly the same controls at the bottom. They help you use the remote controller: as you press controller's buttons, the corresponding soft keys are highlighted. Controls also work independently, so you can access the functions even if you don't have a remote.



## How to pair Q Remote and Q Panel

You can get more helpful tips at [www.theqexperience.com/support/](http://www.theqexperience.com/support/) or by following **The Q Experience** on YouTube.

- 1 Open **Settings** through the main menu.
- 2 Open **Connectivity settings** and turn Bluetooth on.
- 3 Press **Connect Q remote** and a pop up will appear.
- 4 Press and hold both **mode** and **center** on Q remote
- 5 Pop up disappears when pairing is done.

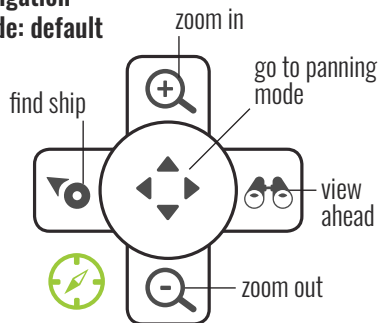


## Using Q system's modes

**Remote's** buttons have different functions depending on which mode you use. This way your controller can contain many functions with only a few buttons!

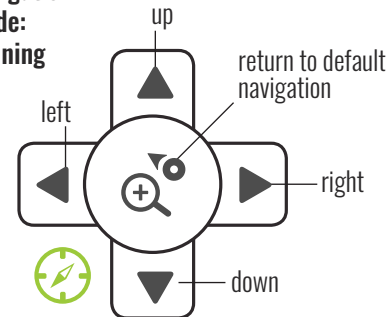
Navigation mode can be found in all Q systems, but some other modes and their functions may require additional equipment. You can switch mode by pressing remote's mode button. Q Panel will display the active mode on the screen as you switch.

### Navigation mode: default



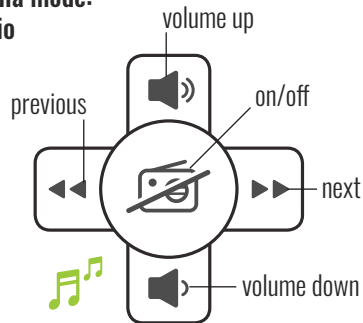
Navigation mode can be found in all Q devices. It contains basic navigation controls, e.g. zooming the map.

### Navigation mode: panning



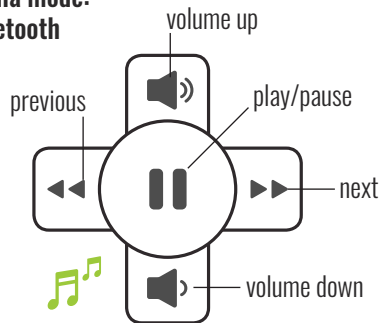
You can switch between default and panning navigation mode by pressing the center key.

### Media mode: radio



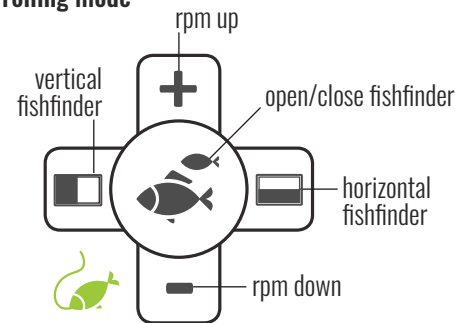
Media mode is available when the boat has a media package installed. Media mode allows you to control the music playing through the radio.

### Media mode: Bluetooth



When you stream music from a Bluetooth paired smartphone, media mode controls switch through audio tracks instead of radio channels.

### Trolling mode



Trolling mode is available when the boat has a trolling cable connected. You can also open fishfinder (if installed) using trolling mode controls.