

Trollbuddy Spec Sheet



The Trollbuddy system, consisting of a linear actuator, microprocessor control option, and aluminum plate assembly, adjusts trolling speeds on both outboard and inboard/outboard motors to maintain optimal trolling speed.

Trolling speed can be easily adjusted with the control switch, allowing the engine to maintain the correct idle rpm while slowing the boat until the proper trolling speed is achieved.

Using the Trollbuddy system eliminates the added weight, expense and maintenance costs of a “kicker” motor or trolling motor and batteries.

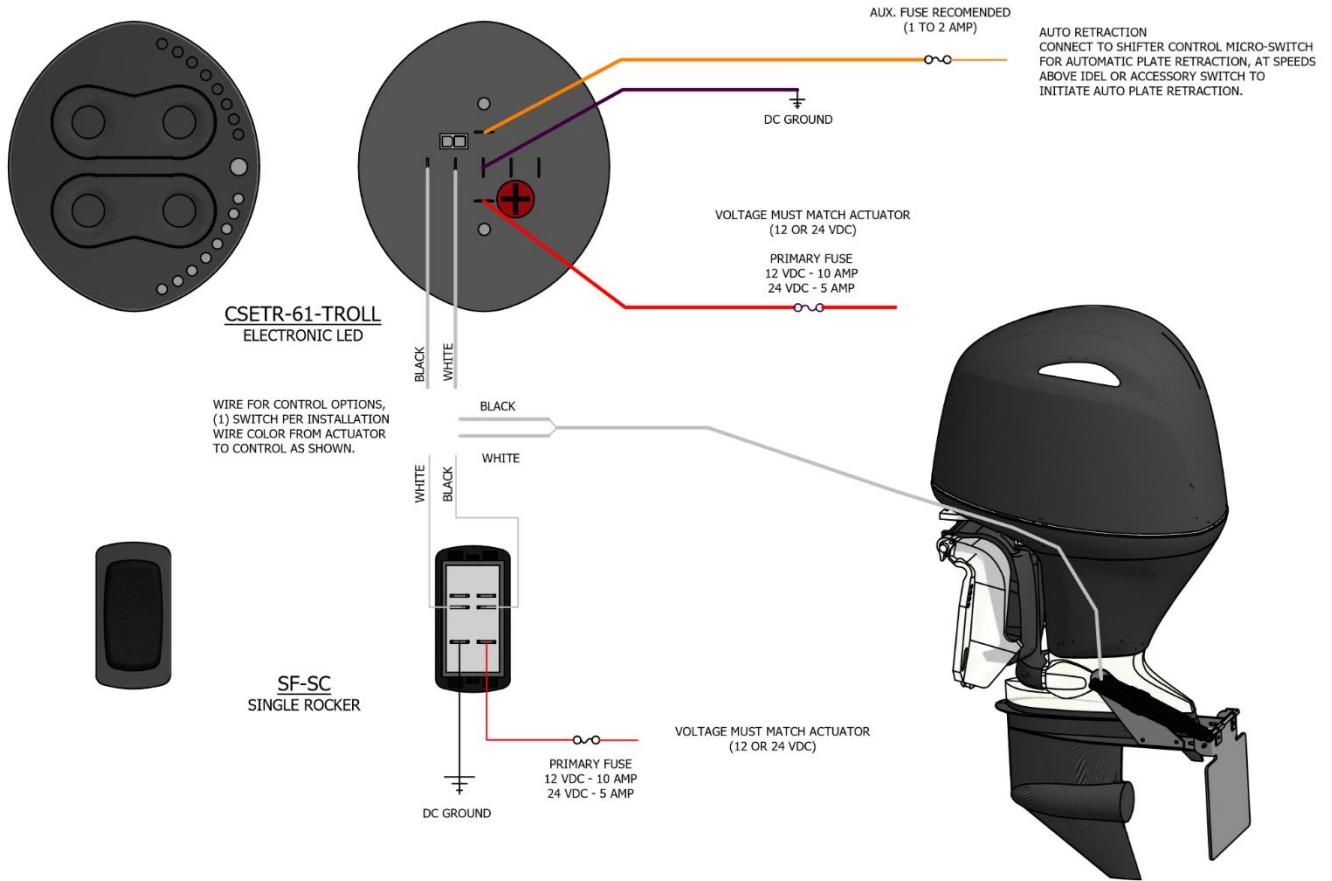
FEATURES

- Adjusts and locks-in trolling speed, while maintaining specified engine idle rpm
- Eliminates added weight and expense of “kicker” motor or trolling motor and batteries
- Automatically retracts plates with speeds greater than trolling speed with LED control
- Features quick-connect pins and plug for easy removal
- Available in both removable clamp-style assembly and permanently mounted
- Designed for outdrives/outboards 20 HP and larger
- Includes control keypad with LED indicators to show plate angle available
- LED keypad completely sealed, waterproof (IP68) and UV resistant
- Automatically dims LED plate position indicators in darkness and brightens in sunlight
- Manually operated rocker control switch option
- Operates on 12 Volts DC (Optional 24 Volts DC available)
- 1 Year Warranty
- CE Approved (Compliance with EMC regulations)

SPECIFICATIONS

Model Number	Overall Plate Size (Length X Width)	Engine Horsepower	Control Switch Cutout	Control Switch	DC Voltage	Fuse Size Power Input	Fuse Size AUX Input
TROLL11X12SB	11"X12" (279mmX305mm)	Above 30 HP	2"/50mm (diameter)	Oval LED Indicator Switch	12	12vdc = 15 amp	1 or 2 amp
TROLL11X12F	11"X12" (279mmX305mm)	Above 30 HP	.875"x1.75"/ 22mmX45mm	Rocker Switch	12	12vdc = 15 amp	N/A
TROLL8X8SB	8"X8" (203mmX203mm)	20-30 HP	2"/50mm (diameter)	Oval LED Indicator Switch	12	12vdc = 15 amp	1 or 2 amp
TROLL8X8F	8"X8" (203mmX203mm)	20-30 HP	.875"x1.75"/ 22mmX45mm	Rocker Switch	12	12vdc = 15 amp	N/A

Trollbuddy Wiring Diagram



Trollbuddy Oval Control Programming

Function	Program Mode Sequence			Range	Default	Program Details
	Enter	Adjust	Exit			
Timing	PORT BOW DOWN	STBD BOW DOWN/UP	PORT BOW UP	4 - 12sec	8sec (Trollbuddy set to 4 sec.)	8 LED's = 8 second actuator 4 LED's = 4 second actuator
Swap LED's	STBD BOW DOWN	STBD BOW DOWN/UP	PORT BOW UP	LED's Opposite of button/same side button	LED's Opposite of button press	1 LED on right and left = LED lights opposite of button press 8 LED's on right and left = LED lights same side as button press

Enter, Adjust and Exit Program Mode:

- Before entering program mode, 12vdc or 24vdc must be applied to Oval main power
- Power to AUX terminal must be OFF (Aux is typically connected to ignition key switch or aux switch)
- Press and hold button noted in Oval Programming chart under column "Enter" for more than 2 seconds while switching the Aux terminal switch to ON at the same time
- Release the "Enter" button and press "STBD BOW UP or DOWN" button to change the value
- Press and hold "PORT BOW UP" for more than 2 seconds to exit program mode

Linear Devices Corporation

11126 Air Park Road, Suite G, Ashland, VA 23005

www.lectrotab.com, Ph 804-368-8428, Fax 804-368-8438

June 2018

