

APOLLO AIS Class A

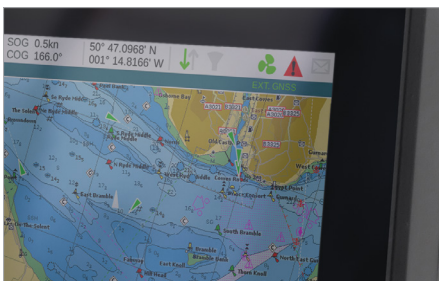
Product Type: OEM White Label

Apollo is the world's most sophisticated and robust SOLAS and Inland-Waterway certified AIS Class A Transceiver. This product is a fully customisable and flexible white label OEM solution.

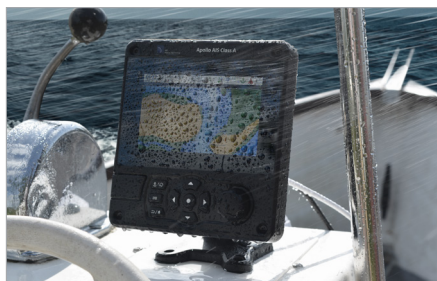
Fourth generation AIS technology delivers unmatched real world AIS receive, transmit and message processing performance and reliability. Quality engineered and manufactured without compromise, with features such as IPx7 weatherproofing and integrated shock & vibration protection for continuous long term operation in even the harshest commercial or military environment.

A large integrated high definition colour screen maximises the benefit of Apollo's powerful Electronic Chart display engine with full detailed chart AIS overlay, and multiple target management functionality, including innovative MOB features and many more.

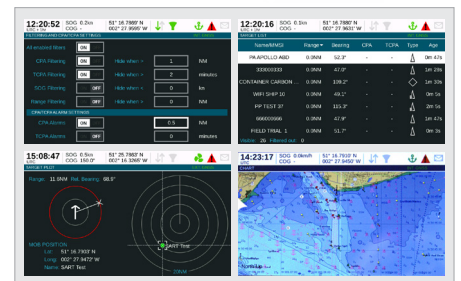
- Internationally certified (SOLAS, MED, FCC, Inland Waterway, Industry Canada)
- IPx6 & IPx7 water and weather proof
- Inter-operable with all other bridge systems
- High performance detailed Electronic Charts - CMAP. Others upon request
- Optional 'Black Force' encryption for Navy/Coast Guard use
- Integrated WiFi
- Fully integrated device
- Multi-lingual, intuitive user interface
- MOB & SART alert and tracking system
- Pilot plug interface
- NMEA0183 & 2000



Full colour display with day and night modes. Integrated CMAP compliant chart engine.



Shock, vibration, water and weather proof (Certified IPx6 & IPx7).



Intuitive, easy to use multi-lingual menu system with an extensive range of features & functionality.

Branding

Our OEM products are supplied fully branded as per your specific requirements. This includes the product, all manuals and packaging such that upon arrival they are instantly ready for you to ship to your customers.

Customisation

SRT products offer unmatched capability to be customised for specific applications and markets. Additional features and functions can be specified and implemented and range from the simple to complex encryption and messaging features.

Certification

This product is fully tested and certified to the relevant international standards and product specifications. As part of the OEM customisation process into your brand, international certification can be transferred into your brand name within a matter of weeks.

Physical Specification

Dimensions	152mm x 165mm x 111mm
Weight	1.5kg

Electrical Specification

Power supply	12 to 24VDC
Power consumption	< 12W

Connectors

VHF antenna connector	SO-239 / UHF
GNSS antenna connector	TNC
Power	Two pin connector (cable provided)
Serial interfaces and alarm relay	18 pin connector (cable provided)
Serial inputs	14 pin connector (cable provided)
NMEA2000®	NMEA 2000 Micro connector

Data Interfaces

NMEA0183 (IEC61162-2) bi-directional ports	3
NMEA0183 (IEC61162-1) sensor inputs	3
DGPS correction data input (ITU-R M.823-2)	1
Alarm relay output	1
NMEA2000	1
WiFi	802.11 b/g/n
Pilot port	1 (optional)

Standards Compliance

AIS standard	IEC 61993-2 Ed 2.0 ITU-R M.1371-5 CCNR VTT Ed 2.0
Serial data interfaces standards	IEC 61162-1 Ed 4.0 IEC 61162-2 Ed 1.0 IEC 61162-3 2008 Ed 1.2
Environmental standard	IEC 60945 Ed 4.0
GNSS performance standard	IEC 61108-1 Ed 2.0 IEC 61108-2 Ed 1.0
Product safety	IEC 60945 Ed 4.0

VHF Transceiver

Transmitter	1
Receiver	3
Frequency	156.025MHZ to 162.025MHZ
Output power	1W or 12.5W (automatic)
Channel bandwidth	25kHz
Channel step	25kHz
Modulation modes	GMSK-TDMA
Bit rate	9600bits/sec
Receiver sensitivity	-107dBm @ 20% PER

GNSS Receiver and Antenna

Channels	72
GNSS systems	Support parallel dual mode operation from GPS and GLONASS
IEC61108-1 Compliant	
IEC61108-2	Compliant
GNSS antenna	Supplied

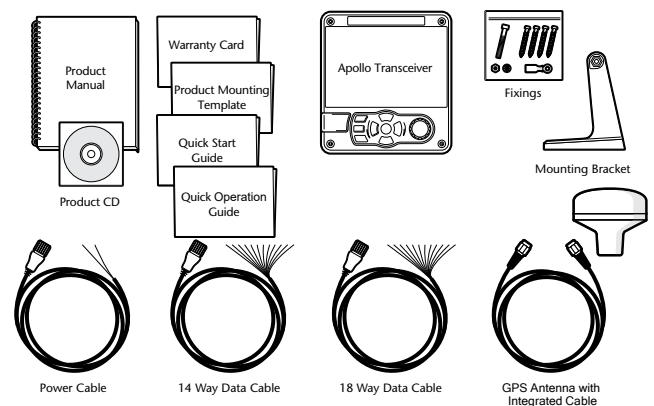
User Interface

5" 800 x 480 full colour LCD display
Rotary encoder for selection and entry
Four menu keys and four direction keys
Micro SD card for software updates and charts

Environmental

Waterproof	IPx6 & IPx7 rated for water ingress
IEC 60945	'Protected' category
Operating temperature	-15°C to +55°C

What's In The Box



201-0788:1