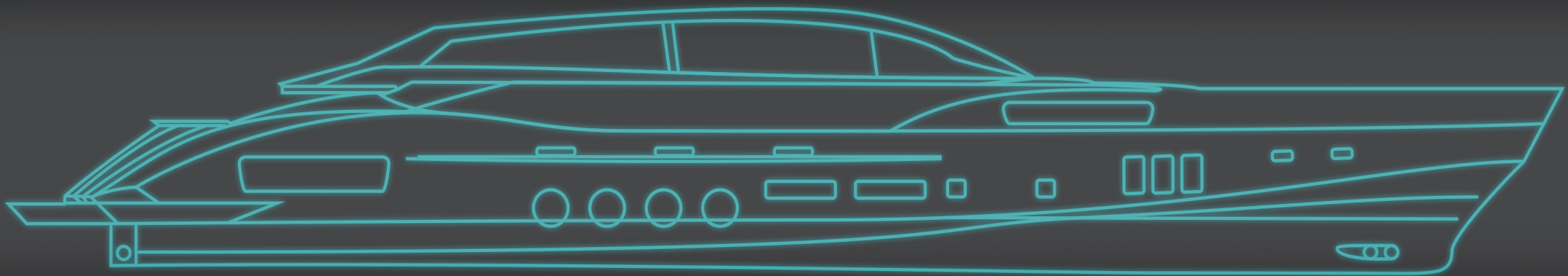




FlowMarine

The world's most advanced and flexible
monitoring and control solution for marine vessels



We work with
Innovate UK

We've listened to captains and engineers and created an alarm and monitoring system that's safe, robust and reliable as well as simple to use, install, maintain and upgrade.

An elegant user interface which you can use on any fixed or mobile device connected to your ship's network, wherever you are on board. Backed up by exceptional after sales service and remote technical support.



What is Flow?

Flow is a radical new approach to vessel alarm, monitoring and control.



Control from anywhere

Control and monitoring from any web-enabled device – on or off the vessel. No internet connection is required for on-board use.



Simple and affordable

A lightweight black box communicates with your existing instruments and control systems. No need to replace your equipment with expensive proprietary systems. Nothing to install or configure on any of your displays.

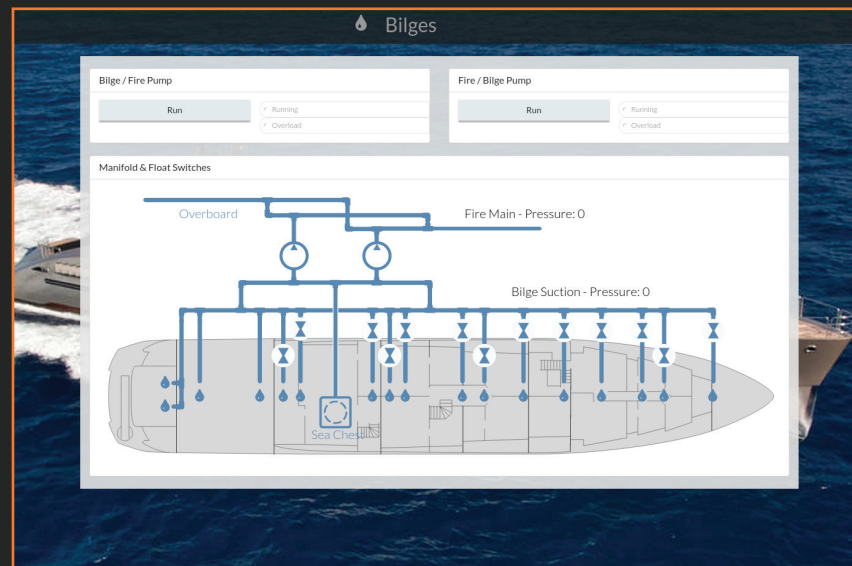


Robust and maintainable

Designed and built by professional engineers, using solid-state, type-approved components. Systems include full redundancy and remote support.



Tablet





Flexible and expandable

From the smallest system showing basic NMEA instrumentation, to integration of large-scale PLC systems, Flow can be adapted and grown to fit your needs.



Do I need internet access to use Flow?

For on-board use no internet access is required. For live access to the vessel only a low-bandwidth internet connection (eg from a SIM card) is needed.



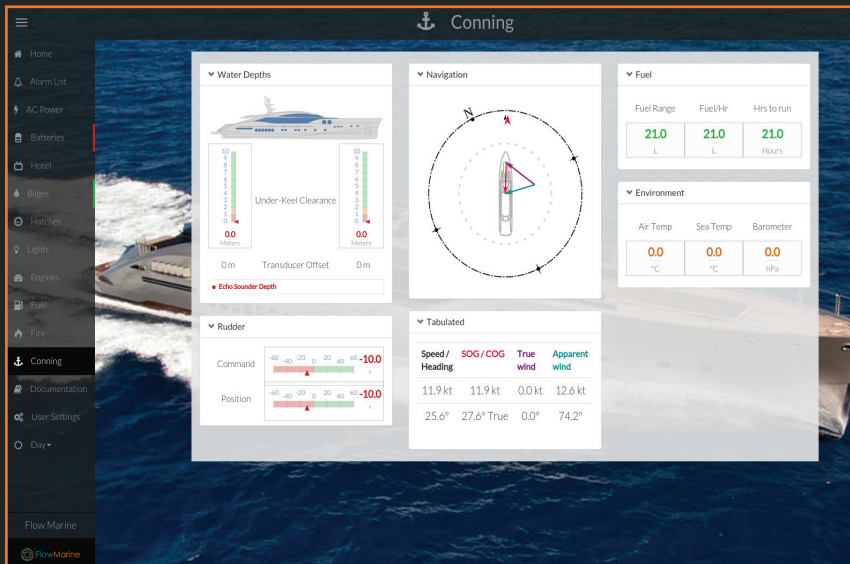
Will Flow connect to my existing systems?

Flow will work with any standard sensor type and will also connect with your PLC and instrumentation systems via any available data interface. We already support standard interfaces such as NMEA 0183, NMEA 2000, J1939, Modbus, RS232 CANOpen, etc, and can support custom interfaces when required.



What if I need everything replaced?

We can help you specify then provide an entirely new set of sensors and if necessary, controllers. For simple control functions this may use off-the-shelf NMEA components. For more complicated systems we use Wago PLCs, programmed to your requirements.



For more information about the Flow system,
details of prices or to book a demonstration, contact us:
info@flow-marine.com +44 20 7193 6852



"We have been tremendously impressed by Flow." Palmer Johnson

"It's quicker, it's sleeker. Flow has many key features but the main thing for me is the after sales service and support." Captain John Walker, SY Liara

"Everything I need at my fingertips, whenever I need it." Captain Matt Kovacs, MV Babylon



www.flow-marine.com

info@flow-marine.com +44 20 7193 6852