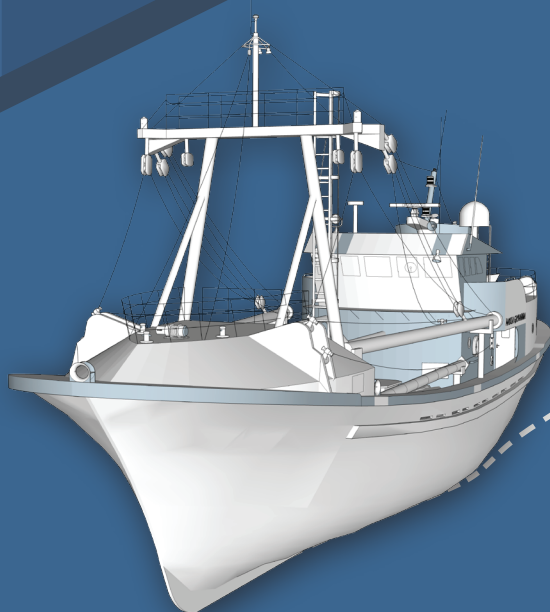


# SecondScreen

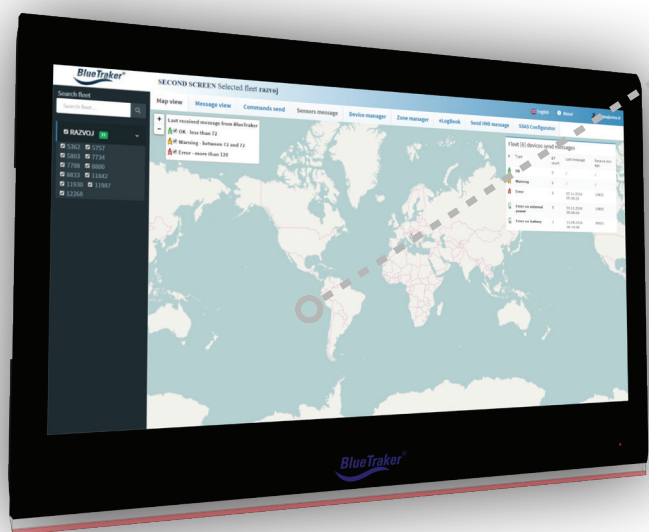
Fishing Fleet Tracking Software

**BlueTraker<sup>®</sup>**



## Gain Insight into Fleet Activity

SecondScreen is a web-based software application that delivers valuable insights about fleet fishing activities directly to Fisheries Monitoring Centres (FMCs).



Vessel Name / Device ID	Fishing Vessel / ID22345
Latitude	41,0220583
Longitude	17,2972333
Speed	13 kn
Heading:	318°

Show Device Track



### Advanced Monitoring

Advanced user interface enables FMCs to seamlessly monitor and manage their fleet's fishing efforts contributing to more sustainable fisheries management.



### Fleet Performance Control

With direct command options SecondScreen allows for comprehensive diagnostic and performance control over your fleets movements on the sea.



### Stay in Touch

When your VMS is paired with the Octopus 10 terminal FMCs can directly communicate with fishermen allowing reception of information directly from the seas.



This interactive application enables advanced real time tracking, monitoring and control over BlueTraker devices through an innovative, user friendly and feature-rich software interface.

## SecondScreen Advantages

Advanced interface enables device performance diagnostics and comprehensive remote performance control over BlueTraker devices, with direct input command option.



Real-time Geofence Management



Advanced Reporting and Analytics



Real-time Communication for Sending Various Reports



Detailed Information About Vessel Activities

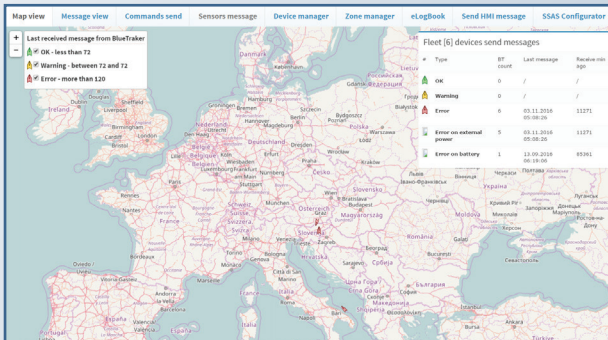


Customizable Functionalities With Custom User Access



## Ensuring Sustainable Fisheries

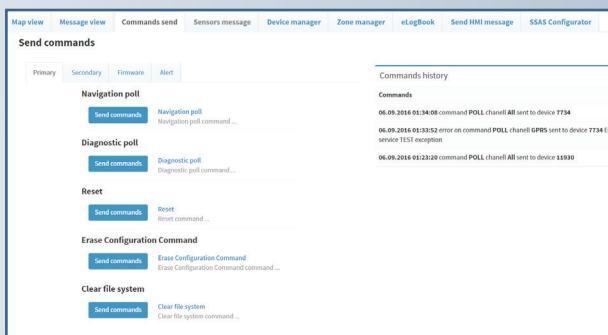
# SecondScreen Functionalities



## Map View

Enables the FMC to gain an up-to-date geographical view of their fleet's activities and their current diagnostic status.

- View the precise location of every vessel
- Simple 'traffic light' system shows whether vessels are reporting on a normal schedule
- 'Mouse over' vessel shows the last received message including: Type of message; Geolocation and Reporting channel



## Commands Send

FMCs can easily send commands to their fleets on the sea from the comfort of their office.

- Navigation and Diagnostic poll commands
- Change reporting interval or send High-resolution data requests
- Upload new firmware to BlueTraker devices

The screenshot shows the 'Messages BlueTraker' tab. It displays a detailed table of message history with columns: Message ID, Device ID, Receive Time, GPS time, Channel, Message Type, Longitude, Latitude, Text, Speed, Heading, Battery ch..., and External po... The table lists multiple messages with their respective details.

## Message View

Allows FMCs to view the recent message history of all vessels in their fleets.

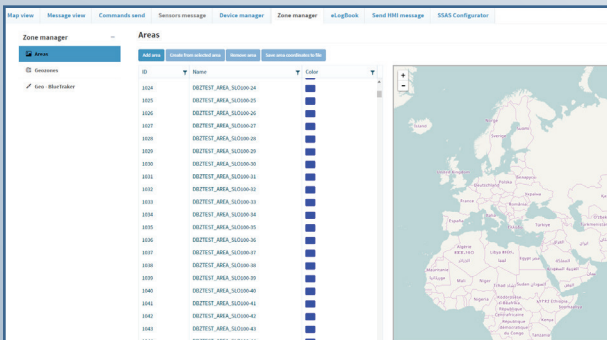
- Select reporting time period to see historical data
- Filter by message type (Diagnostic, Activation, Status poll etc.) or reporting channel (Iridium or GPRS)
- Export to Excel function allows further analysis

The screenshot shows the 'Device manager' tab. It displays a table of devices with columns: Public device ID, Serial number, Account, and BODU (IMEI). The table lists various devices and their associated accounts.

## Device Manager

Manage BlueTraker devices and user access.

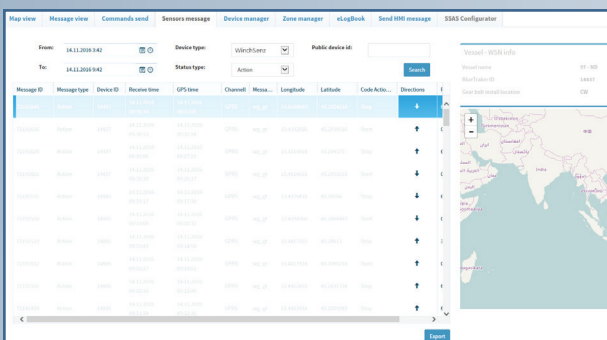
- Add, remove or edit BlueTraker terminals within the fleet
- Add, remove or edit SecondScreen users access



## ZoneManager

Zone manager allows FMCs to easily add, remove or edit geozones and synchronize them to individual vessels, groups or the entire fleet.

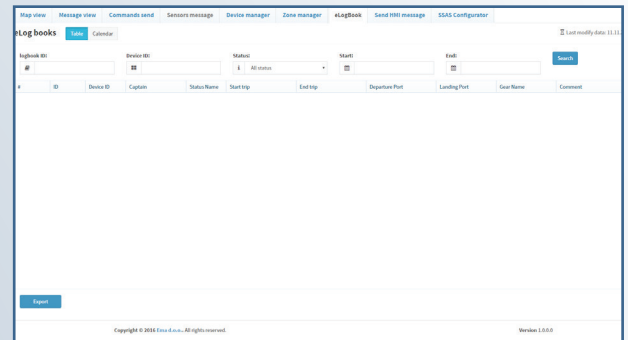
- Customize reporting frequencies for individual/group or entire fleet in specific zones
- Add seasonal/temporary geozones that can be activated/deactivated when there are specific spawning events
- Tailor high frequency reporting for at-risk marine areas
- Select reporting channels (GPRS or Satellite) to save on costs



## Sensors Message

Message and Map view allows FMCs to view precisely when and where their fleets are fishing through BlueSenz technology.

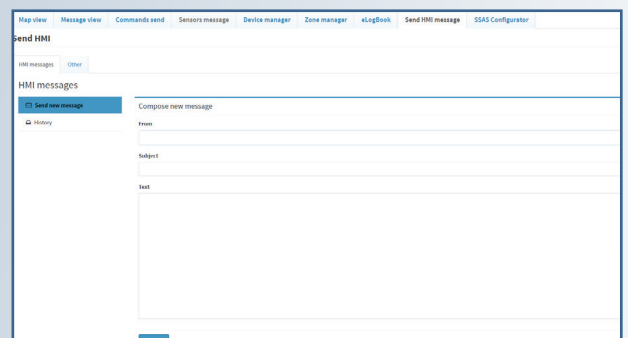
- View precise GPS coordinates of exact fishing locations and time spent fishing
- Detailed fishing activity data (net deployed location, net haul location)
- Export function allows deeper analysis



## eLogBook

Direct access into the eLogbooks helps FMCs to determine what the current catch haul is; whether quota limits are going to be reached.

- See whether vessels are up-to-date with logbooks in one quick glance
- Compare levels of bycatch by vessel or across the fleet
- Investigate discrepancies into reported vs landed catches
- Reduces the 'busywork' of data reentry
- Adapt management strategy / techniques quicker than ever before



## Send HMI Message

FMCs are able to communicate crucial information to their fishing fleets.

- Send up-to-date fisheries information
- Send messages to individual vessels, groups or the entire fleet
- Alert fishermen to storm warnings / potential threats at sea

## Key Features of SecondScreen

---



### **Advanced Vessel Tracking with Real-time Data View**

Stay up-to-date with your fleet's every move. Analyze results through comprehensive performance reports. Monitor trips from start to finish with full access to historical information.



### **Fast and Simple Communication with Messaging**

Clear communication between FMC operators and vessel managers is ensured.



### **Increased Efficiency**

Significantly reduced time and cost for data analysis and data management.





## **Easy to Understand**

Enjoy a state-of-the-art user interface that is clearly arranged, simple and quick to use.



## **Configuration and Global Access**

With SecondScreen, there is no software to install and maintain. Simply login to the SecondScreen interface with your BlueTraker ID and manage information about your fleet.



## **Easy-To-Use Controls for Custom Access**

Control access by granting the users or groups with the rights to only the information they need to perform their jobs.

# Fisheries Data in One Place

---



**elii**

WIRELESS DATA SOLUTIONS

EMA d.o.o.

+386 3 42 84 800

Teharje 7b

sales@bluetraker.com

SI – 3000 Celje, SLOVENIA

www.bluetraker.com

Distributor Label  
HERE

EMA reserves the right to make changes to products or specifications without prior notice

©2017 EMA - Wireless Data Solutions - All rights reserved.

All trademarks or registered trademarks are the property of their respective owners.  
Part No: 14124