

# Leeds Bronze Engineering Ltd

A Division of the Calder Group of Companies



The Global Bronze Expert



- \* A pan – European engineering group – Turnover €197m (2015).
- \* Employing over 700 people across Europe.
- \* 9 specialist manufacturing subsidiaries operating in five different countries.
- \* Strategic supply partners to many diverse industries worldwide.
  - \* Offshore Oil & Gas
  - \* Excavation/Construction
  - \* Marine
  - \* Defence
  - \* Nuclear
  - \* Healthcare
  - \* Automotive
  - \* Aerospace



\* Specialist Engineering



\* Lead Engineering



\* Lead Sheet



# Leeds Bronze Engineering Ltd

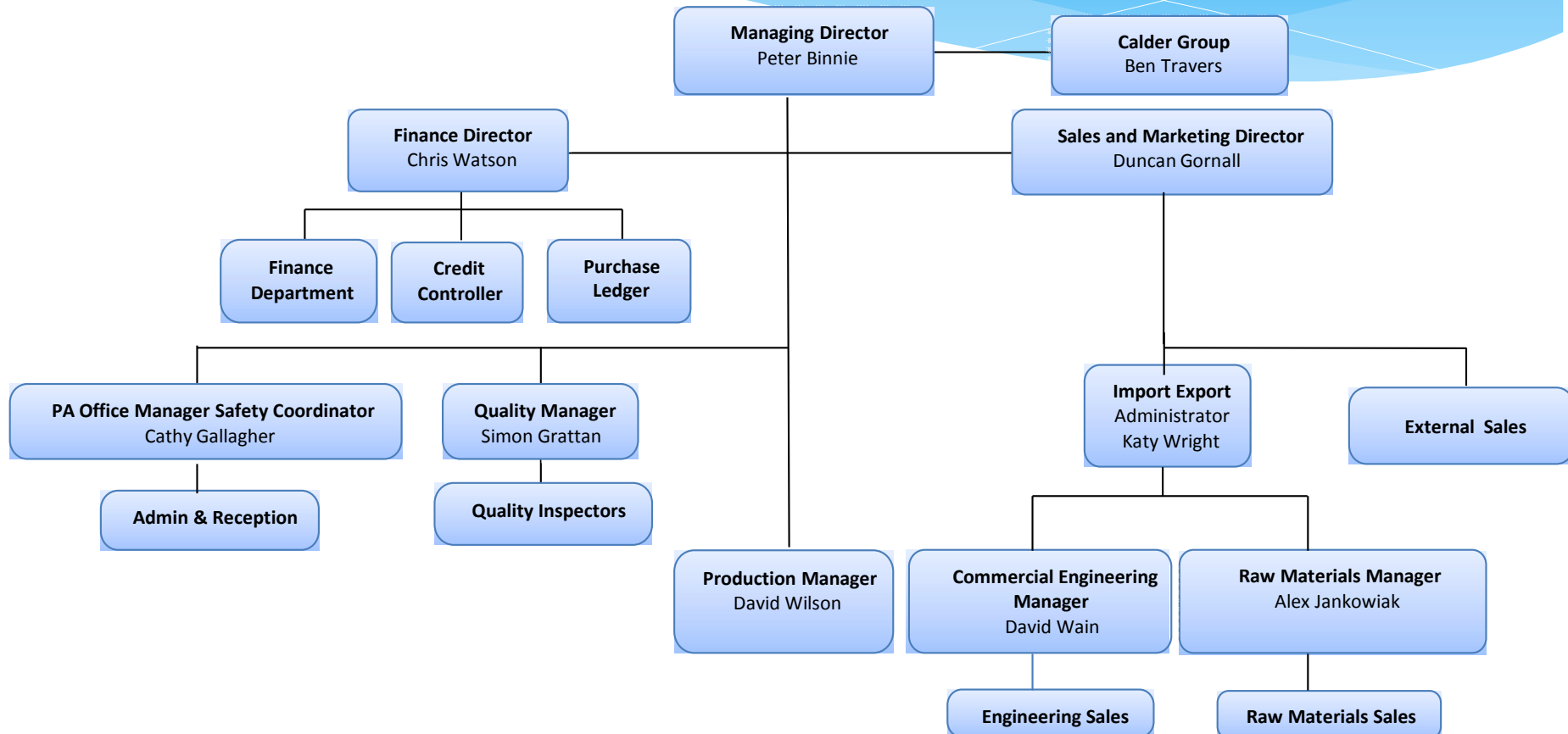
- \* Founded as a production facility by Frys Metals in 1974.
- \* Acquired by the Calder Group in 1994.
- \* Global OEM supplier of high quality components and copper based alloys.
- \* Over €4.2m investment in plant and equipment over the past 10 years.
- \* 3 elements to Leeds Bronze Engineering
  - \* OEM manufacturer of machine components
  - \* Stockist of raw material
  - \* Factored machined components and wrapped bushes
- \* Core competence - Manufacturer of solid bronze components from
  - \* Aluminium Bronze
  - \* Leaded Bronze
  - \* Phosphor Bronze/Tin
  - \* High Tensile Brasses

# Leeds Bronze Engineering Ltd

## Cont:

- \* Alternative materials (Round or Tube form)
  - \* Copper Nickel
  - \* Duplex & Super Duplex
  - \* Aluminium
  - \* Composite materials
- \* Machining of Round centrifugal castings.
- \* 24 hour manufacturing
- \* UK's largest stockholder of bronze alloys.
- \* Blue chip customer base.

# Leeds Bronze Engineering Ltd



The Global Bronze Expert

# Leeds Bronze Engineering Ltd

## Vision

Our purpose is to earn the respect and lifelong loyalty of our customers by providing competitively priced, high quality components and copper based alloys, on a global scale.

## Mission statement

- \* To be the first choice supplier of Copper based alloys and quality components into selected niche markets.
- \* To deliver continuous improvement in everything we do.
- \* To educate and train our employees in order to meet our objectives.
- \* To grow our business for the benefit of all the stakeholders within the organisation.
- \* To forge mutually beneficial relationships with all our customers.
- \* To treat all our employees, suppliers and customers in an equal and ethical manner.

The Global Bronze Expert

# Machined Components



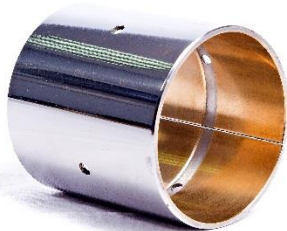
The Global Bronze Expert



# Raw Material



# Bi Metal & Specialist Bushes Machined components



# Capabilities



CNC turning centres

- \* CNC Milling
- \* Conventional turning
- \* Grinding
- \* Oil Grooves
  - \* Straight
  - \* Loops
  - \* Spirals
  - \* Figure of eight
    - \* Single
    - \* Double
    - \* Treble
- \* Inspection
  - \* Coordinate measuring machine



The Global Bronze Expert

# Industry sectors

## Power Generation



## Oil & Gas



## Marine



## Construction



The Global Bronze Expert

# Leeds Bronze Engineering Ltd

 **DAVID BROWN**  
Engineered around you

  
**Weatherford**

**BAE SYSTEMS**



 **FEDERAL  
MOGUL**

 **Rolls-Royce**

**LIEBHERR**

  
**NATIONAL  
OILWELL  
VARCO**

 **AkerSolutions**

**HITACHI**



**SULZER**



The Global Bronze Expert



# Quality Promise

- Customer Satisfaction
- Continuous Improvement
- Training and Development
- Communication
- Suppliers as partners
- Management systems
- Environmental, Health and safety



The Global Bronze Expert

Thank you