



BUOYANCY AID / LIFE JACKETS / FLOATATION GARMENTS

## WHAT TYPE OF FLOATATION PRODUCT IS BEST FOR YOU?

OUR PRODUCT RANGE HAS NEVER BEEN WIDER OR MORE VARIED. HOWEVER, ONLY YOU KNOW WHAT YOUR NEEDS ARE. LET US TOGETHER FIND THE RIGTH BUOYANCY PRODUCTS OR LIFEJACKETS FOR YOU AND YOUR NEEDS.

### FLOATATION PRODUCTS CATEGORIES:

The body does not weigh as much in water as it weighs on dry land. 50N (N = the unit of buoyancy. 10 N = 1 kg) is therefore normally enough to maintain an adult's buoyancy. Regatta's products are CE marked, which certifies that they are according to European Standards (EN/ISO).



50N – ISO 12402-5 / EN 393

FLOATATION vests, floatation jackets, floatation suits. Only for those who can swim. For use in protected waters where help is nearby. Not a lifejacket!



100N – ISO 12402-4

High fluorescence lifejackets with reflective stripes. Should be able to demonstrate, using the stipulated test procedures, that the jacket can turn a person on to their back. Persons that cannot swim should always use a lifejacket. For use in protected waters.



150N – ISO 12402-3

Lifejackets. Coastal and offshore waters used with foul weather clothing. Buoyancy must be carefully evaluated where heavy tools or equipment are used.



275N – ISO 12402-2

Inflatable lifejackets. Offshore, shipping and industry for extreme conditions. Can be used with strong protective clothing, most survival suits and safety harnesses.



### Contents

- 4 Lifejackets
- 6 Buoyancy aid
- 7 Racing
- 8 Action Explorer
- 9 Armfloats & Pet buoyancy aid
- 10 Horizon Coral/ Reef
- 11 Tide & Mirage
- 12 Marina Jacket
- 13 Marina vest
- 14 Floatation suits
- 16 Oilskin gear Fisherman
- 18 Inflatable lifejackets
- 20 Re-arming kits
- 22 Product survey

**MOST PRODUCTS IN THE COLLECTION HAVE UNIQUE FEATURES, LOOK AFTER THE SYMBOLS BELOW. BE ALSO AWARE OF THE SPESIFIC ISO APPROVALS, LINKED TO EACH PRODUCT.**

ISO 12402

Products approved according to international standard ISO 12402

CUSTOMISED

Product provides the possibility for logo application, either by embroidery or transfer/silk screen printing

INTERLOCK

A wave barrier technology integrated in the inflatable lung of the lifejacket

ISO 15025

Limited flame spread





THE ROUGH CONDITIONS OF THE NORTH SEA IS ONE OF THE MOST DEMANDING MARITIME ENVIRONMENTS IN THE WORLD. SITUATED ON THE 62°.

THIS HAS BEEN THE SURROUNDINGS AND THE INSPIRATION FOR REGATTA SINCE THE 1950'S.

WE ARE PROUD TO MAKE PEOPLE SAFE THROUGH CONSTANT DEVELOPMENT OF TRUSTWORTHY AND INNOVATIVE CLOTHING  
AND LIFESAVING EQUIPMENT.



## OUR CHILDREN ARE THE MOST PRECIOUS WE HAVE

Parents want high quality and comfortable lifejackets which their children will enjoy using. Regatta lifejackets are designed to be used and have strong waist and crotch straps and a solid zip at the front. Children are active and curious and need freedom of movement. Our

lifejackets support this. They are designed to provide high levels of freedom of movement and do not have any obstructions that can reduce the child's field of view. It is important that children enjoy using the lifejackets, which is why we are using materials that are both



Tested by the  
magazine BÅTLIV  
2011+  
magazine Foreldre &  
Barn 2012



Testfakta  
Research  
Nordic AB

### SOFT

Belt with quick-release buckle, and top and bottom tie cords and zip in front. Whistle and SOLAS reflective tapes. High visibility due to fluorescent orange or yellow fabric. Lightweight buoyancy material that can not puncture. Crotch strap in all sizes. 5/15 kg has beavertail.



Colours: Orange/Lemon  
Size: 5/15, 15/30, 30/50, 50/70, , 90kg+

ISO 12402-4



### SOFT KAPTEIN SABELTANN

Print from Kaptein Sabertooth World makes the lifejacket a favorite. Simple adjustment. Belt with quick-release buckle, zip, top and bottom tie cords at the front. Crotch strap in all sizes. 5/15 kg has beavertail. Equipped with whistle and SOLAS reflective tapes.



Colour: Red with Captain Sabertooth print  
Size: 5/15 and 15/30 kg

ISO 12402-4

soft and pliant, so children are as comfortable as possible. Notice! Ensure that the life-jacket is not too large or too small for your child. Read the user manual thoroughly and always watch children when they are near, in or on the water!



### SOFT KAPTEIN SABELTANN BABY

Baby lifejacket with zip and belt with quick-release buckle at the front for easy adjustment. Beavertail with individual adjustment. Turns the baby easily to a face up position. Provides a stabile floating position in the water. Easy to adjust. Print from Kaptein Sabeltann World makes the lifejacket a favorite among children.



Colour: Red with Captain Sabertooth print

Size: 5–15 kg

ISO 12402-4



### SOFT ELIAS

Fun and colourful design of Elias and his friends. Simple adjustment. Belt with quick-release buckle, zip, top and bottom tie cords at the front. Crotch strap in all sizes. 5/15 kg has beavertail. Equipped with whistle and SOLAS reflective tapes.



Colour: Lemon with Elias print

Size: 5/15 and 15/30 kg

ISO 12402-4

### SOFT ELIAS BABY

Baby lifejacket with zip and belt with quick-release buckle at the front for easy adjustment. Beavertail with individual adjustment. Turns the baby easily to a face up position. Fun and colourful design of Elias and his friends. Buoyancy material of soft PVC. Whistle and SOLAS reflective tapes.



Colour: Lemon with Elias print

Size: 5–15 kg

ISO 12402-4



## AN ALL-ROUND VEST

A vest for all-round outdoor enthusiasts with varied interests or for those who need an all-round vest. This is the vest for activities at sheltered water. Please make sure, for your own safety, that

the vest fits correctly. Remember to adjust it so that the vest is correctly positioned. You are then ready to enjoy your leisure pursuit.



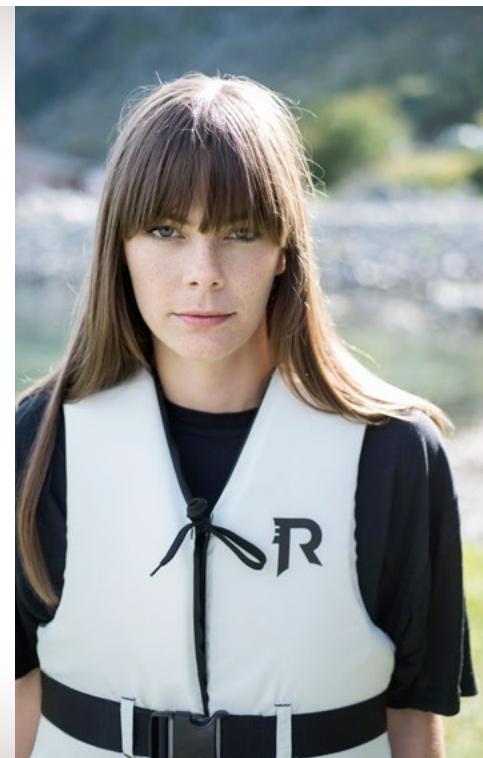
### POP JUNIOR

Floatation vest to fit the younger kids who can swim. With quick-release buckle belt and top and bottom tie cord for maximum adjustment.



Colours: Royal and Pink  
Size: 25-40 kg

ISO 12402-5



### POP

Floatation vest with quick-release buckle belt and top and bottom tie cord for maximum adjustment.



Colours: Red/ Navy/ Vaporous Grey  
Size: 30/50, 50/70, 70/90, 90kg+

ISO 12402-5

## FOR HIGH SPEED ACTION-PACKED DAYS ON THE WATER

Everything is thoroughly thought through and tested so that you can concentrate on the exhilaration of the water, speed and the adrenaline.



### POP WYPER/NORWAY/NAUTIC

Floatation vest with fresh design and extra design features! Belt with click buckle, adjustments for best fitting and D-ring.



Colours: Navy/ Red/ Navy  
Size: 30/50, 50/70, 70/90, 90kg+

ISO 12402-5



### RACING

Dressed in this fluorescent yellow vest, you skim across the waves, water-ski on your feet. Belts fitted with strong and high quality quick-release buckles ensure that the vest fits perfectly. The vest has a modern and close-fitting design. Four adjustable belts with quick-release buckles for maximum adjustment. Water resistant shell in fluorescent yellow makes it the right choice for wakeboard, tubing or water skiing activities.



Colour: Fluorescent yellow/grey/black.  
Size: Youth 35/50, small-medium 40/70,  
large-XL and more than 70 kg.

ISO 12402-5



## A VERSATILE VEST FOR MANY ACTIVITIES INCLUDING WINDSURFING, PADDLING OR FISHING FROM ROCKS

A vest for all-round outdoor enthusiasts with varied interests or for those who need an all-round vest. You can safely use the vest for windsurfing, kayaking and canoeing, or for pleasant trips along the river with a can of worms and your fishing rod on your shoulder.

Please make sure, for your own safety, that the vest fits correctly. Remember to adjust it so that the vest is correctly positioned. You are then ready to enjoy your leisure pursuit.



### ACTION EXPLORER/JUNIOR

Action Explorer floatation vest is for the active user which has high demands to details and functionality. The vest is designed for sailing, paddling and water sports where comfort and freedom of movement is essential. The vest fits well to the body with adjustments in front and on shoulders. Two brackets for light – right side front and back (CE-approved light is accessories). Equipped with crotch strap. Regatta has this year developed an additional size for kids who can swim. The vest is smaller in width and length and is very comfortable.



Colours: Mango, Red and Black  
Size: Junior: 25-40  
Size: 30/50, 50/70, 70/90, 90kg+

ISO 12402-5

### ACCESSORIES



DUAL FUNCTION  
CE-approved light



## ARMFLOATS

Regattas Captain Sabertooth Armtooth with supersoft buoyancy material which cannot puncture. Decorated with print from Captain Sabertooth's World!



## ARMFLOATS

Regattas Captain Sabertooth Armfloats with supersoft buoyancy material which cannot puncture. Decorated with print from Captain Sabertooth's World!

Adjustable tightening makes the donning easy! Captain Sabertooth Armfloats are suitable for use by the waterside or in pools. Remember – This is a swimming aid - NOT a lifejacket!

Colour: Red with Captain Sabertooth print  
Size: 3-6 years (11-30kg)



## FLOATATION VEST FOR DOGS

Regatta dogvest - for the man's best friend



## PET BUOYANCY AID

A soft, comfortable and light weighted buoyancy aid for our pets. Protects your pet from cold and heat. Wide webbing with click buckles for easy donning and adjustments. Fitted with a lifting handle and D-ring for the leash. Suitable for both cats and dogs.

Colour: Red.  
Size: S (up to 5 kg)  
M (5–15 kg)  
L (15–25 kg)  
XL (more than 25 kg)

A DESIGN WHICH PROVIDE IMPROVED FREEDOM OF MOVEMENT AND COMFORT IN THE MARITIME ENVIRONMENT

Horizon Coral and Horizon Reef are tailored, windproof and water repellent, with waist tie cord and velcro cuff tightening. Details such as ventilation under the arms, concealed hood and windproof zips make this a floatation jacket you will love. High fluorescent yellow hood

ensures that you will be visible if a critical situation should arise. You will not only look great in a Horizon Coral and Horizon Reef, but you will also be well protected.



HORIZON CORAL 860/861 / HORIZON REEF 870/871

Floatation jacket with a windproof and water repellent shell. Windproof zip at the front. Cuffs with velcro adjustment. Waist tie cord. Fleece-lined neck. Fluorescent yellow hood for increased visibility, can be folded into the collar. Practical pockets with zip. Crotch strap, can be stored in an own pocket when not in use. D-ring for attachment to emergency stop.



Horizon Coral  
860 Colour: Navy blue. Size: XS – XXXL  
861 Colour: Red. Size: XS – XXXL

CUSTOMISED  
ISO 12402-5

Horizon Reef  
870 Colour: Navy blue. Size: S – XL  
871 Colour: White. Size: XS – L





## A LIGHT JACKET WHICH KEEPS YOU FLOATING

How wonderful to put on a soft and comfortable jacket when daylight begins to disappear. Regatta Tide provides good safety for pleasant evenings by and on the sea.



### TIDE 880

Tide is a light and comfortable floatation jacket in a classic design.

The model appears as a regular leisure jacket but in addition it provides safety and protection against hypothermia in an emergency situation. The floatation jacket Tide 880 has 2 pockets outside and 1 inner pocket.



Size S – XL

Colour: Navy blue

ISO 12402-5

## FLOATATION VEST FOR THE FASHION-CONSCIOUS

The Regatta Mirage vest is designed for those who want full freedom of movement in a practical and tailored floatation vest. By choosing Mirage you will have a garment which you can use before, during and after a boat trip. You will look great even before the fun has begun.



### MIRAGE 653/654/655

Mirage provides a clean and timeless style in addition to be very soft and comfortable to wear. Floatation vest with fleece-lined collar. Three external pockets and inner pocket, all with zips. D-ring for attachment to emergency stop. Crotch strap which can be stored in an own pocket when not in use.



Size S – XXXL

653 Colour: Navy blue

654 Colour: Red

655 Colour: Vaporous grey

CUSTOMISED

ISO 12402-5



## A LIGHT “QUILTED” JACKET WHICH KEEPS YOU FLOATING

Regatta's new floatation jacket for those who like the classic heritage look. The “quilted” floatation jacket it's light weight and comfortable and fulfill all requirements for the fashion-conscious customer.



### MARINA 890

Marina jacket is Regatta's new “quilted” floatation product. The product combines the quality we appreciate for leisure clothing. Marina jacket have a discreet safety in the build-in buoyancy which in addition protects against hypothermia in an emergency situation. Marina jacket is a light and comfortable jacket in a classic design. Wearing a Marina floatation jacket you will feel trendy and safe at the same time- as well as ashore and at sea. Fleece inside collar for warmth and comfort. Two lower patch pockets with opening at the top and at the sides together with an inner pocket. D-ring for attachment to emergency stop. Crotch strap which can be stored in an own pocket when not in use. Back waist and bottom tabs for an adjustable fit. Reflective piping at front, collar and cuff for high visibility.

Equipped with a fluorescent microfiber cloth (patch) that can be used in the need of visibility in an emergency situation or simply to clean your sunglasses.



Size: S – XXXL

890 Colour: Navy

CUSTOMISED

ISO 12402-5



## THE CLASSIC "QUILTED" VEST WHICH FLOATS

The Regatta Marina "quilted" vest is designed for those who like the classic heritage look and want full freedom of movement in a practical and tailored floatation vest. By choosing Marina you will have a garment which you can use before, during and after a boat trip.



### MARINA 660/661

Marina is a light and comfortable vest in a classic design. Wearing a Marina floatation vest you will feel trendy and safe at the same time- as well as ashore and at sea. Fleece inside collar for warmth and comfort. Two pockets at waist with opening at the sides together with an inner pocket. D-ring for attachment to emergency stop. Crotch strap which can be stored in an own pocket when not in use. Bottom tabs for an adjustable fit at the back. Reflective piping at front and around the collar for high visibility.

Equipped with a fluorescent microfiber cloth (patch) that can be used in the need of visibility in an emergency situation or simply to clean your sunglasses.



Size: S – XXXL

660 Colour: Navy

661 Colour: Vaporous Grey

CUSTOMISED

ISO 12402-5





### REGATTA'S FLOATATION SUITS HAVE SAVED LIVES!

It is important, when an accident occurs, wearing the correct clothing. The floatation suits are tested for both extreme environments and for open sports boat trips. The suit has become a good companion for many seafarers. The suits are light and features ventilation which makes them



#### ACTIVE 911

Taped seams. Neoprene cuffs. Practical fleece-lined pockets. Removable hood. Zips under arms for ventilation. Adjustable belt with quick-release buckle. Active 911 is equipped with inner detachable suspenders. This to secure that the floatation suit is perfectly fitted. Due to the fact that the suspenders are fitted inside the floatation suit at waist height.



Approval: ISO 12402-5/6 50N. Tested and found in compliance with ISO 15027 class D-thermal protection.

Colours: Navy blue/fluorescent yellow

Size: XS – XXXL

CUSTOMISED

ISO 12402-5






perfect for use in working situations. The buoyancy materials also provide insulation against the cold. and protection in emergency situations. Windproof and water-repellent materials and taped seams.



COASTLINE 953

Windproof and water repellent shell material and taped seams. Rubberized cuffs. Fluorescent yellow hood (for increased visibility) which can be folded into the collar. Reflective tapes on sleeves and front. Inside cord for adjustment. Loops for fixing inflatable lifejacket. D-ring for attachment to emergency stop. Under arms zips for ventilation.




Approval: ISO 12402-5/6 50N. Tested and found in compliance with ISO 15027 class D-thermal protection.  
Colours: Red /Navy blue  
Size: 128-140, 140-152, 152-164 cm  
XS – XXXL

ISO 12402-5

SPORTLINE 954

Floatation suit with windproof and water-repellent shell and taped seams. Rubber cuffs. Fluorescent yellow hood for high visibility, can be folded into the collar. Reflective tapes on arms and front. Cord inside for adjustment. Loops for fixing inflatable lifejacket. D-ring for attaching to the emergency stop. Under arm zips for ventilation.




Approval: ISO 12402-5/6 50N. Tested and found in compliance with ISO 15027 class D-thermal protection.  
Colours: Black/fluorescent yellow  
Size: XS – XXL

CUSTOMISED

ISO 12402-5

OFFSHORE WORKSUIT 957

The shell is approved in accordance with the “Standard for limited flame spread ISO 15025”, anti static, windproof and water repellent and has taped seams. High visibility SOLAS reflective tapes on the hood, sleeves and shoulders. Ventilation zips under the arms. Legs with long zippers for easier donning. Adjustable hood designed for use with hard hats and is equipped with whistle. Designed primarily for professional use.



Approval: ISO 12402-5/6 50N. Outer fabric ISO 15025, Standard for limited flame spread. Tested and found in compliance with ISO 15027 class D-thermal protection.  
Colours: Red/fluorescent yellow  
Size: XS – XXL

CUSTOMISED

ISO 12402-5

ISO 15025

## PROTECTIVE CLOTHING WHICH IMPROVES COMFORT AND SAFETY FOR BOTH LEISURE AND PROFESSIONAL FISHERMEN

Through generations of testing we, working together with fishermen, have developed the ultimate workwear for all those working in the fishing industry – at all levels. On deck, there is plenty to do and it is not unusual for fishermen to take their jackets off when it gets too hot.

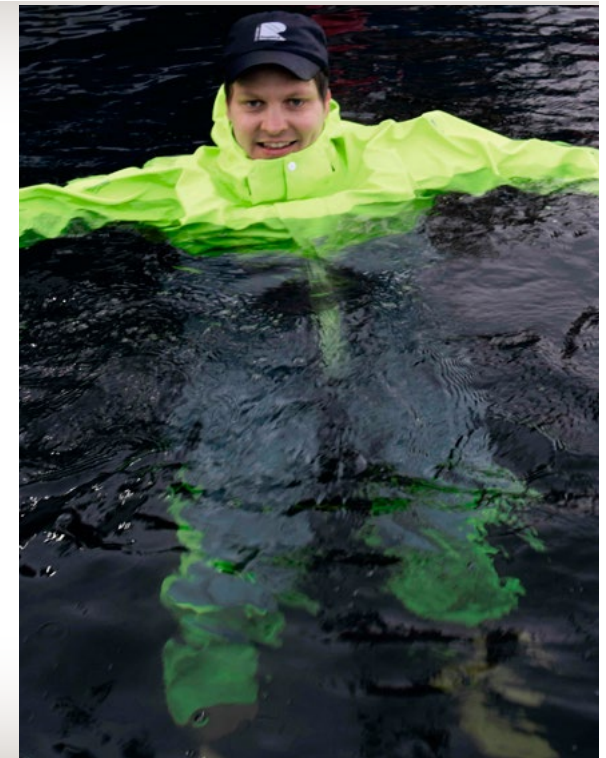
We have, for this reason, chosen to locate floatation panels at the front and back of the overall. The elbows and knees are also tailored, to ensure users maximum freedom of movement. Not only professionals should have good equipment!



Additional snap buttons for the attachment of Regattas Knifepocket



Regattas Knifepocket attached on the right leg of the Fisherman bib.



### FISHERMAN

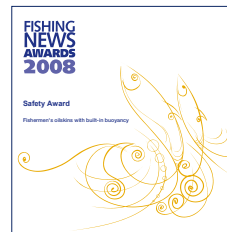
Two piece oilskin-style bib & braces trouser and jacket. Wind and water-tight shell of PVC coated polyester. Fluorescent yellow for increased visibility and practical grey in vulnerable areas. No external details on which to get snagged in equipment when working. Buoyancy is built into the overall. The overall has zones in the sides for ventilation and pockets with zips and flaps. Elastic, adjustable braces with quick-release buckle to help taking on and off quick. Knees are body-tailored and reinforced, as are the lower legs. Pockets for kneepads. Additional snap buttons at the right leg for attachment of the Regatta Knifepocket. The overall is approved in accordance with 'Standard for buoyancy aids' ISO 12402-5. The jacket has double buttoning at the front. Elbows are reinforced and body-tailored. The hood has a brim with a drawstring for adjustment. The jacket does not have buoyancy elements.



Colours: Fluorescent yellow/grey  
Size: S – XXL

ISO 12402-5

A cooperation which has saved lives! Regatta Fisherman is the result of a cooperation between SINTEF Helse, Norges Fiskarlag, Gjensidige Forsikring and Regatta AS.



Regatta Fisherman  
Safety Award 2008



The Norwegian Design Council has awarded the Regatta Fisherman their **Award for Design Excellence** within the category ready made clothing design.





REGATTA FISHERMAN WITH BUILT  
– IN BUOYANCY HAVE SAVED LIVES!







[WWW.REGATTA.NO](http://WWW.REGATTA.NO)

For further information about Regatta's collection of inflatable lifejackets: [www.regatta.no](http://www.regatta.no)

NEW

①



①

### **NORTHSAFE W/HARNESS**

A modern style lifejacket with a ergonomic shaped design for optimal freedom of movement. Equipped with «break-out-zipper» and pocket with zipper in front. Rounded shape with neoprene-lined collar gives vital comfort and support. Buckle and D-ring in stainless steel. Bracket for attachment of light etc. Integrated crotch strap. (CE -approved light is accessories).



Fabric: Pvc REACH  
Colours: Vaporous grey  
and black

ISO 12402-3

CUSTOMISED



## REGATTA INFLATABLE LIFEJACKETS TO COMPLETE THE SAILING GEAR – SAFE AND COMFORTABLE UNDER ALL CONDITIONS!

Regatta provides a wide range of inflatable lifejackets, all light weighted and designed to be worn in combinations with the sailing and leisure jackets.



- 2 SPORTSAFE**  
Shorter design for optimal freedom of movement. Equipped with «break-out-zipper» and pocket with zipper in front. Rounded shape with neoprene-lined collar gives vital comfort and support. Buckle and D-ring in stainless steel. Bracket for attachment of light etc. Integrated crotch strap. (CE -approved light is accessories).

**150N** Colours: Red and Black



**275N** Colour: Black

ISO 12402-2

ISO 12402-3

INTERLOCK

CUSTOMISED

- 3 FREESAFE**  
Comfortable inflatable lifejacket due to neoprene lined neck. Outer cover with separate lung. Lung with patented wave barrier effect (Interlock). Buckle and D-ring in stainless steel. Integrated crotch strap.



**150N** Colour: Navy blue  
FreeSafe XL: 200cm belt length

ISO 12402-3

INTERLOCK

CUSTOMISED

- 4 CHILDSAFE**  
Buckle and D-ring in stainless steel. Velcro closure at the front for better adjustment, crotch strap, grab loop and whistle.



**150N** Colour: Navy blue

ISO 12402-3

CUSTOMISED

- 5 SEASAFE**  
Light and comfortable. Outer cover with integrated lung. Adjustable belt with quick-release buckle. Grab loop and whistle.



**150N** Colour: Black and Red

ISO 12402-3

CUSTOMISED

- 6 AQUASAFE**  
Light and comfortable inflatable lifejacket with a separate lung. Adjustable belt with quick-release buckle and reflectives on lung. Grab loop and whistle. Integrated crotch strap.



**150N** Colour: Black and Red

ISO 12402-3

CUSTOMISED

- 7 AQUASAFE W/ HARNESS**  
Light and comfortable inflatable lifejacket with a separate lung. Adjustable belt with stainless steel buckle and D-Ring. Reflectives on lung. Grab loop and whistle.



**150N** Colour: Vaporous Grey

ISO 12402-3

CUSTOMISED

### INFLATABLE LIFEJACKETS

Automatic inflatable lifejackets will inflate within few seconds after immersion in water. They can also be manually activated, by pulling the release string or blowing the oral tube. All Inflatable lifejackets must be checked and serviced (see instruction manual). The following symbols explain the different features on each model.

<b>ISO 12402</b>	Approved according to int. standard ISO 12402
<b>CUSTOMISED</b>	Provides possibility for logo application
<b>INTERLOCK</b>	A wave barrier technology integrated in lung

WHY IS MAINTENANCE OF INFLATABLE LIFEJACKETS IMPORTANT?

Inflatable lifejackets require technical inspection and annual maintenance to ensure that the lifejackets work as required when you need them. You can carry out pre-use inspections yourself. Read the user manual carefully! Check that the vest is intact before use. Open the cover and check the lung itself. Make sure that the CO2-cylinder is fully screwed into place

and is not damaged. Check that the end cap is screwed fully into place and that the indicator clip is correctly in position. Ensure that the pull cord is placed outside the outer cover. See instructions in the product's packaging or go to [www.regatta.no](http://www.regatta.no) for more information.



Bobbin HR



Bobbin UM



Crotch strap



Re-arming Kit  
33gr. cylinder w/UM/HR clip



Re-arming kit  
HR 24 gr.  
complete



Operating head UM  
PRO Sensor



Operating head UM  
MK 5



Previous version of  
Operating head HR



## APPROVED ACCORDING TO THE NEW INTERNATIONAL STANDARD FOR INFLATABLE LIFEJACKETS

ISO 12402

### REPLACEMENT OF BOBBIN TYPE HR



- Date stamped bobbin (production date)
- Bobbin shape ensures correct fitting



- Ensure that the end cap is screwed fully into place



- End cap displays a green indicator when correctly fitted

### CHANGE/INSPECTION OF CO2-CYLINDER



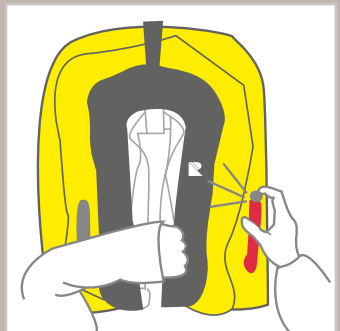
- Replacement after cylinder has been discharged
- Replacement of gasket
- Visual control



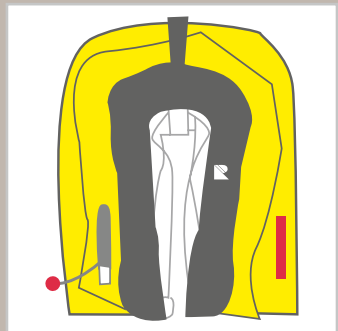
- Ensure that the cylinder is fully screwed into place



## CORRECT PACKING OF INFLATABLE LUNG WITH SEPARATE OUTER COVER



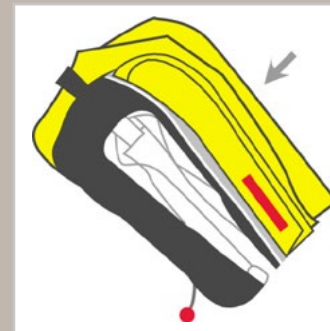
Remove all the air by pressing the valve cap on the nozzle and apply pressure to the lung.



The lifejacket is flattened and is prepared for packing.



Fold the lung up. First fold the side where the re-arming mechanism is found. Remember to close the Velcro opening. Fold in layers as shown\*. The pull card is to be fed out through the Velcro.



Then fold the opposite side. Remember to close the Velcro opening. Ensure that the nozzle is easily accessible. Attach the grab loop over the nozzle.



Finally, fold the vest collar section. Ensure that the belt strap is centred.



The inflatable lung must not be rolled.



\* Inflatable lung must be folded.

## FLOATATION VESTS



SPRING  
2015



POP JUNIOR  
25-40 KG  
Royal/ Pink



POP  
Navy/ Red/ \* Vaporous grey



POP NAUTIC  
Navy/ \* Red/ \* Pink



POP NORWAY  
Red



\* POP WYPER  
Navy

## WATER SPORT



SPRING  
2015



ACTION EXPLORER JUNIOR  
25-40 KG  
\* Mango/Red



ACTION EXPLORER  
Mango/Red/Black



RACING  
Fluorescent yellow/  
grey/black

## LIFEJACKETS



SOFT KAPTEIN SABELTANN/  
SOFT KAPT. SABELTANN BABY  
Red with print



SOFT ELIAS/  
SOFT ELIAS BABY  
Lemon with print



SOFT  
\* Lemon/Orange



THERMO CRUISE BABY  
Orange

## INFLATABLE LIFEJACKETS



NEW



NORTHSAFE W/HARNESS  
Black/Vaporous grey



SPORTSAFE  
Black/Red



FREESAFE Navy  
FREESAFE XL Navy  
Belt length: 200 cm



CHILDSAFE  
Navy / \* Red

## INFLATABLE LIFEJACKETS



NEW



AQUASAFE W/HARNESS  
Vaporous Grey



AQUASAFE  
Black/Red



SEASAFE  
Black/Red



SPORTSAFE  
Black

## INFLATABLE LIFEJACKETS





## FLOATATION VESTS



MIRAGE  
Navy /Red/  
Vaporous grey  
S-XXXL

SPRING  
2015



MARINA 660/661  
Navy / Vaporous grey  
S-XXXL



## FLOATATION JACKETS



HORIZON CORAL  
Navy /Red  
XS-XXXL



HORIZON REEF  
Navy S-XL  
/Vaporous grey XS-L



TIDE  
Navy  
S-XL

SPRING  
2015



MARINA 890  
Navy  
S-XXXL

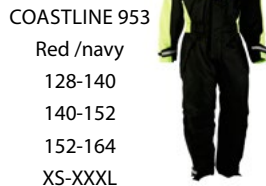
## FLOATATION SUITS



ACTIVE 911  
Navy/  
fluorescent yellow  
XS-XXXL



OFFSHORE  
WORKSUIT 957  
Red/fluorescent  
yellow  
XS-XXL



COASTLINE 953  
Red /navy  
128-140  
140-152  
152-164  
XS-XXXL



SPORTLINE 954  
Black/ fluorescent  
yellow  
XS-XXL



FISHERMAN  
Fluorescent yellow/grey  
S-XXL

## OILSKIN GEAR



## ACCESSORIES



HØLJE  
Black



BEANIE  
Grey



BEANIE  
Blue



CAP  
White



WIND CAP  
Navy blue

## RAIN COAT

## ACCESSORIES



BELT  
Black



SEA FLASH  
SOLAS  
Light



DUAL FUNCTION  
CE-approved light



BAG  
Grey, PVC, 75 liters



KAPT. SABELTANN  
ARM FLOATS  
Red



PET BUOYANCY AID  
Red

## ARMFLOATS

## PET BUOYANCY AID



# REGATTA NORWEGIAN LIFEGUARD

REGATTA AS. BORGUNDFJORDVEIEN 80. NO-6017 ÅLESUND

TEL: +47 70 17 69 00 | FAX: +47 70 17 69 01

OFFICE@REGATTA.NO | WWW.REGATTA.NO

