



PREMIER AUDIO & VIDEO ENTERTAINMENT



Table of Contents

JENSEN® Marine

Stereos and DVD players.....2-3

Speakers and Subwoofers.....4-7

Televisions8-9

Wireless Observation and Accessories 10-11

Marine Audio®

Stereos..... 12-13

Speakers and Accessories 14-15

Polk Ultramarine®

Amplifiers and Marine Source Unit..... 16-17

Speakers 18-19

Subwoofers 20-21

Product Specifications.....22-24



When you choose products from JENSEN® Marine, you choose tradition, experience and style. Enjoy life on the water with electronics that are Designed to Move You.



MS2A - AM/FM/160 Watts/USB/App Ready/iPod®/iPhone® Ready/Bluetooth®

- Waterproof (IPX5)
- App Ready - All primary unit functions can be controlled by any iOS or Android-based mobile device with downloaded jControl app
- Bluetooth steaming audio (A2DP) and controls (AVRCP)
- iPod/iPhone, as well as other digital media devices, connect via rear USB input
- Rear auxiliary input (RCA)
- Rear pre-amp line-level audio output (RCA)
- Wired remote control ready (MWR150)
- EQ presets
- Standard DIN chassis
- Fully enclosed rear chassis



MS3A - AM/FM/160 Watts/USB/App Ready/Bluetooth®

- Waterproof (IPX6)
- App Ready - All primary unit functions can be controlled by any iOS or Android-based mobile device with downloaded jControl app
- Bluetooth steaming audio (A2DP) and controls (AVRCP)
- Digital media device connection via rear USB input
- Rear auxiliary input (RCA)
- Four-channel output (40W x 4)
- Rear pre-amp line-level audio output (RCA)
- Blue backlit, daylight-readable LED segmented display and controls
- Audio controls (bass/treble/balance/fader)

MS30 - 160 watts/USB/Waterproof

All the features of MS3A *except for* Bluetooth and App control

Compact size - 3-inch-hole
Mounts into 3.5-inches



jControl app controls all of the primary functions of App Ready JENSEN® stereos directly from a phone or tablet. It can be downloaded from the App Store on iTunes for Apple devices, or the Google Play Store for Android devices, and found by searching for "jControl".



DVDB01 - CD/MP3/WMA/DVD Player

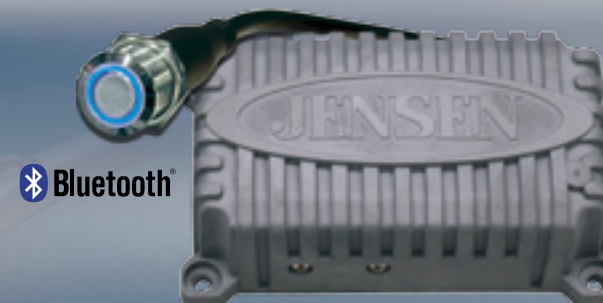
- Positive LCD display
- Front and rear auxiliary audio and video inputs
- Selectable video aspect ratio output (4:3 or 16:9)
- Programmable video output (PAL/NTSC)
- Rear pre-amp line-level audio output (RCA)
- Wireless remote control included
- Wired remote control ready (MWR75)
- Compatible with JENSEN® LED TV remote controls



DV2011 - AM/FM/160 watts/CD/MP3/WMA/DVD Player

- Positive LCD display
- Detachable faceplate
- Front auxiliary audio and video input
- One composite video input (RCA)
- Two composite video outputs (RCA)
- Front and rear pre-amp line-level audio outputs (RCA)
- Subwoofer output (RCA)
- Wireless remote control included
- Wired remote control ready (MWR75)

ACCESSORIES



JAHD240BT - 2-channel Bluetooth® Amplifier

- Makes standard speakers Bluetooth-capable, ready to receive and play music directly from any Bluetooth device
- 80 watts max (40 watts RMS)
- Waterproof (IPX6)
- Illuminated program button
- 4 ohm ~ 8 ohm stable
- Operating voltage: 10 - 18V
- Frequency response: 20 Hz - 20 KHz
- Epoxy potted enclosure
- Corrosion resistant finishes/materials (ASTM B117)



MWR150- Wired Remote Control

- Waterproof (IPX6)
- White LED-backlit controls
- Daylight-readable display
- Removable chrome trim ring
- Surface or flush-mounting
- 20 ft. extension cable included
- Conformal coated circuit boards
- UV resistant finishes/materials (ASTM D4329)
- Corrosion resistant finishes/materials (ASTM B117)

DID YOU KNOW...

Non-volatile memory is computer memory that can retrieve stored information even after having been turned off.



MS650
6.5" Coaxial Speaker
• 50 watts max



MSX65
6.5" High-Performance
Coaxial Speaker
• 75 watts max



JXHD30HPC - 3" Speakers
• 60 watts max



Each marine product is specifically designed from the ground up. We rigorously test all of our products on site at our state-of-the-art research and development center located in Elkhart, Indiana. Each product is put through a series of strenuous tests to ensure it can handle the conditions encountered in a marine environment.

Compatible Grilles for MS650 or MSX65 Speakers



PMSX65GRS
Silver Classic Grille



PMSX65GRW
White Classic Grille

RG65HW - White Hybrid Grille



RG65SS - Silver Sport Grille



RG65SB - Black Sport Grille



MS5006B/W - 5.25" Dual Cone Speakers
• 30 watts max
• Available in black or white



MS6007WR/BR/SR - 6.5" Coaxial Speaker
• 60 watts max
• Available in white, black or silver



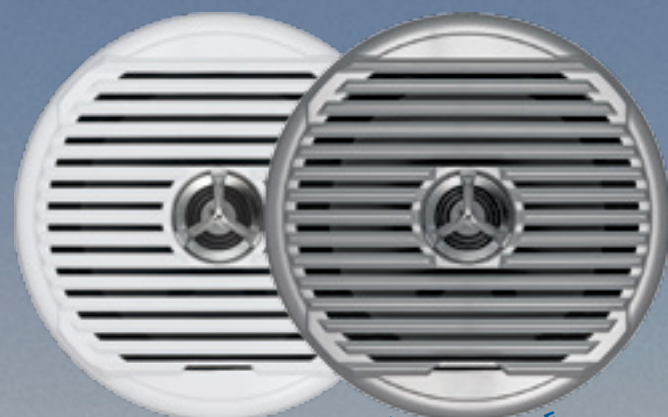
MSX60S - 6.5" Coaxial Speaker
• 65 watts max



MSX60RV - 6.5" Coaxial Speaker
• 75 watts max

UMCX650LK1 - LED Light
Kit for 6.5" RG Grilles
• Selectable blue or white
light (blue shown here)

All speakers and grilles are sold individually unless otherwise noted.



MSX65S/W - 6.5" High-Performance Coaxial Speaker

- 75 watts max
- Available in white or silver



MSX60B - 6.5" High-Performance Coaxial Speaker

- 75 watts max
- Matte black grille



MSX60CP - 6.5" High-Performance Coaxial Speaker

- 75 watts max
- Polished chrome grille

JMP5W800 - 8" Amplified Subwoofer

- 200 watts max handling power
- 12VDC power system
- Built-in amplification
- Black anodized, all-aluminum enclosure
- Mate-in-lock connectors for easy installation
- Adjustable gain and crossover
- Low (line) level inputs
- Frequency: 60Hz - 200Hz
- Vertical and horizontal mounting provisions



POWER 4002 - 400 Watt Amplifier

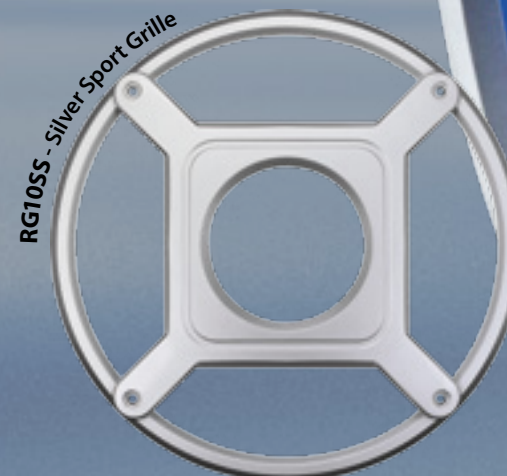
- Two channels
- MOSFET power supply
- Variable bass EQ (0 - 12dB @ 45Hz)
- RCA outputs allow for daisy-chaining multiple amps
- Three-way system protection circuitry (thermal, DC-Offset, and speaker short protection)

POWER 760 - 760 Watt Amplifier

- Four channels
- MOSFET power supply
- Variable bass EQ (0 - 12dB @ 45Hz)
- Built-in protection circuit to safeguard against short circuits



Compatible Grilles for MSW10 Subwoofer



UMSW1000K1 - LED Light Kit for 10" RG Grilles

- Selectable blue or white light (blue shown here)

MSW10 - 10" Marine Subwoofer

- 500 watts max handling power
- Sealed housing design
- Designed for free air (infinite baffle) enclosures
- Nickel-plated copper terminals and insulated tinsel leads
- UV resistant finishes/materials (ASTM D4329)
- Corrosion resistant finishes/materials (ASTM B117)
- 9" mounting hole
- 4.8" mounting depth

All speakers and grilles are sold individually unless otherwise noted.

All speakers and grilles are sold individually unless otherwise noted.



LED TELEVISION SERIES

Our 12 volt LED HDTVs are specifically engineered to withstand the harsh elements of the marine environment. They're ultra-thin, energy-efficient and include features like convenient front controls and included remote control that can also work with the stereo or DVD player*.

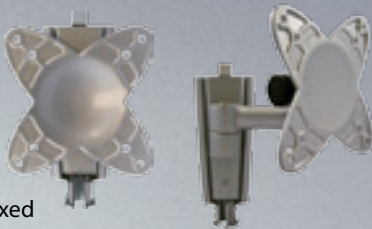
- Conformal coated circuit boards
- Reinforced mounting points
- High-performance 16:9 LCD panel
- *JCOM HDMI interface with all JENSEN DVD players automatically detects the DVD, simplifying operation

Model	Screen size	Tuner	HDMI	VGA	Composite A/V	Audio Out	Amp Draw
JE1512LEDWM	15"	NTSC/ATSC	1	1	1	1	1.9
JE1912LEDWM	19"	NTSC/ATSC	2	1	2	1	1.7
JE3212LEDWM	32"	NTSC/ATSC	2	1	2	1	5.7



JE1914DVDC - 19" AC/DC LED TV with Built-in DVD Player

- HDMI, VGA, composite video and stereo audio inputs
- DC power cord, AC/DC power adapter
- Wireless remote control and stand included



MAF10

- Low profile; fixed
- Accommodates 15"-26" TVs

MAF30

- Single swing arm
- Accommodates 15"-26" TVs



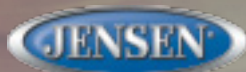
JTV4015DC - 40" 12 Volt DC LED Television

- HDMI inputs (2)
- Component video input
- Stereo audio input
- Digital audio output (SPDIF)
- USB input
- Wireless remote control included

JTV2815DC - 28" 12 Volt DC LED Television

Same features as the JTV4015DC





Voyager

Digital Wireless Observation

FEATURING

WiSight® technology

WVOS511

Wireless Back-up Camera System

- Uses WiSight™ technology, digitally locking together the monitor and the camera, virtually eliminating outside interference
- Digital signal transmits through and around objects up to 60-feet away
- Hi-definition, wireless camera connects to 12 volt power source
- 5.6" wireless LCD monitor can connect with one wireless camera; also has one input for one wired camera
- Monitor can be permanently mounted
- Suction cup monitor mount, DC plug and stainless steel hardware for mounting camera also included
- Audio capability



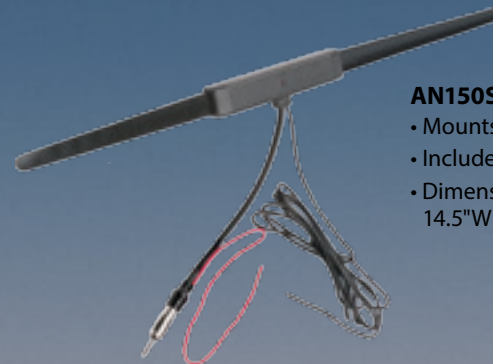
- WVRXCAM1 - Wireless Back-up Camera to add onto WVOS511 System or your existing monitor**
- Included digital receiver plugs into wired camera input on monitor
 - Camera connects to 12 volt power source



SRA25B - SiriusXM
Satellite Radio Antenna



- SXV300V1M - SiriusXM**
Satellite Radio Tuner
- Works with SiriusXM-compatible dash stereos



- AN150SR - Amplified Stereo Antenna**
- Mounts easily using adhesive foam strips
 - Includes 7' cable
 - Dimensions: 14.5"W x .875"H x .75"D



- AN110 - 39" Collapsible-mast Antenna**
- Includes 48" cable and removable rubber cap for locking or unlocking applications (key included)



- 1181067 - 10" Rubber-mast Antenna**
- Includes a 60" cable and adjusts to a 90° angle



- ANT1B - 30" Soft-wire Antenna**
- Plugs directly into your factory or aftermarket stereo



- 8309819 - 6' Soft-wire Antenna**
- Plugs directly into your factory or aftermarket stereo



- AN140 - 6' Two-piece Dipole Antenna**
- Small, flexible design allows for easy installation in tight locations where you want the unit hidden from view

jPORTG - 1/8" Auxiliary Input Jack

- Allows connection of any MP3 player or external audio device



- JENAUX - USB Interface and 1/8" Auxiliary Input Jack**
- USB port allows connection of an external storage device
 - 1/8" AUX jack allows connection of any MP3 player or external audio device



- MWREXT - 18' Extension Cable**
- Works with MWR150 and MARC100 wired remote controls



- JWREXT - 18' Extension Cable**
JWREXT10 - 10' Extension Cable
JWREXT25 - 25' Extension Cable
JWREXT35 - 35' Extension Cable
- Works with MARC200, PRC200BC and PRC100BC wired remote controls



- MWRYCBL - "Y" Connection Cable**
- Allows for connection of two wired remote controls (MWR150/MARC100) to one stereo



- JWRYCBL - "Y" Connection Cable**
- Allows for connection of two wired remote controls (MARC200/PRC200BC/PRC100BC) to one stereo

STEREO AUDIO CABLES



JCA6 - 6'
JCA12 - 12'
JCA20 - 20'

COMPOSITE VIDEO CABLES



JCV12 - 12'
JCV25 - 25'

STEREO COMPOSITE VIDEO CABLES



JCAV3 - 3'
JCAV6 - 6'
JCAV12 - 12'
JCAV20 - 20'
JCAV25 - 25'



Wake up. Get Loud. That's the attitude Marine Audio wants you to express when enjoying their selection of ultramodern and well-diversified stereos, speakers and accessories. Feel like you're in elite company with Marine Audio.



MA200 - AM/FM/160 Watts/App Ready/iPod®/iPhone® Ready/Bluetooth®/USB

- Waterproof (IPX5)
- App Ready - All primary unit functions can be controlled by any iOS or Android-based mobile device with downloaded Marine Audio app
- Bluetooth streaming audio (A2DP) and controls (AVRCP)
- iPod/iPhone, as well as other digital media devices, connect via rear USB input
- Rear auxiliary input (RCA)
- Rear pre-amp line-level audio output (RCA)
- Wired remote control ready (MARC100)
- EQ presets
- Standard DIN chassis
- Fully enclosed rear chassis

MA100 - AM/FM/160 Watts/App Ready/Bluetooth® Stereo

- Waterproof (IPX6)
- App Ready - All primary unit functions can be controlled by any iOS or Android-based mobile device with downloaded Marine Audio app
- Bluetooth streaming audio (A2DP) and controls (AVRCP)
- Digital media device connection via rear USB input
- Rear auxiliary input (RCA)
- Four-channel output (40W x 4)
- Rear line-level output (RCA)
- White backlit, daylight-readable LED segmented display and controls
- Audio controls (bass/treble/balance/fader)



Compact size - just 3.5-inches



MA400 - AM/FM/200 Watts/App Ready/SiriusXM-Ready®/iPod®/iPhone® Ready/Bluetooth®/USB

- Two-piece modular design (commander and hideaway tuner/amp module)
- Waterproof commander (IPX6) and tuner/amp module (IPX5)
- App Ready - All primary unit functions can be controlled by any iOS or Android-based mobile device with downloaded Marine Audio app
- Bluetooth streaming audio (A2DP) and controls (AVRCP)
- SiriusXM-Ready (SXV300V1M tuner and subscription required)
- Full iPod/iPhone controls and charging via USB
- Seven-channel NOAA weatherband tuner
- Digital media device connection via rear USB input (requires JENAU audio input jack)
- Auxiliary line-level audio input (RCA)
- Four-channel line level audio output (RCA, front and rear)
- EQ Presets
- Wired remote control ready (MARC200)



MA300 - AM/FM/160 Watts/App Ready/iPod®/iPhone® Ready/Bluetooth®/USB/NOAA Weatherband

- Waterproof (IPX6)
- App Ready - All primary unit functions can be controlled by any iOS or Android-based mobile device with downloaded Marine Audio app
- Bluetooth streaming audio (A2DP) and controls (AVRCP)
- iPod/iPhone, as well as other digital media devices, connect via rear USB input
- Seven-channel NOAA weatherband tuner
- Auto-store/Prescan
- Rear auxiliary input (RCA)
- Rear pre-amp line-level audio output (RCA)
- Wired remote control ready (MARC200)
- White LED-backlit dot matrix LCD display and buttons
- AMP remote activation (12V @ 100mA)
- Front or rear flush mounting or surface mounting with the AMPS pattern

DID YOU KNOW...

Conformal coating is a protective film that's applied to circuit boards to protect them from exposure to harsh, wet environments.



COMMANDER



MARC200 - Wired Remote Control

- For use with MA400 stereo



MARC100 - Wired Remote Control

- For use with MA200 and MA300 stereos



Marine Audio app controls all of the primary functions of

App Ready Marine Audio stereos directly from a phone or tablet. It can be downloaded from the App Store on iTunes for Apple devices, or the Google Play Store for Android devices, and found by searching for "Marine Audio".



MS650 - 6.5" Coaxial Speaker
• 50 watts



MSX65 - 6.5" High-Performance Coaxial Speaker
• 75 watts

Compatible Grilles for MS650 or MSX65 Speakers



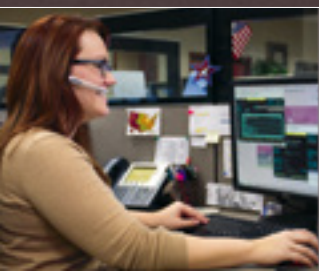
RGMACX15B - Black Sport Grille



RGMACX1HW - White Hybrid Grille

UMCX650LK1 - LED Light Kit
for 6.5" RGMACX1 Grilles
• Selectable blue or white light

RGMACX1SS - Silver Sport Grille



Our customer service team is thoroughly trained and well equipped to help answer any questions about our products and their features. We work directly with you to quickly and efficiently solve any issues even after the sale is complete. When you partner with ASA Electronics, you can be sure that we will have the inventory to meet your needs. If we upgrade or discontinue a product, we will inform you well in advance and work with you to facilitate your assembly and installation needs.

RCA CABLES

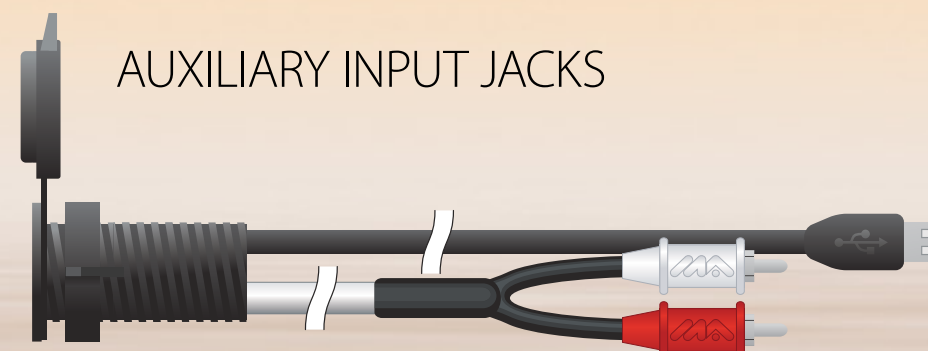


MARCAC1 - 1 meter (3 feet)
MARCAC2 - 2 meter (6 feet)
MARCAC4 - 4 meter (12 feet)
MARCAC6 - 6 meter (18 feet)
MARCAC9 - 9 meter (27 feet)

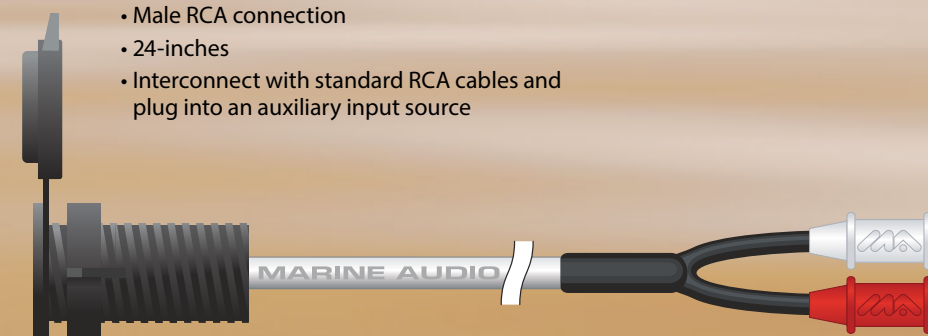
- Gold-plated high-mass connectors ensure best signal transfer and maximum resistance to corrosion
- PVC rubber Y-boots seal out harmful moisture and fluids while relieving barrel-to-wire stress
- Twisted pair technology provides the highest level of shielding against unwanted noise and interference from engine and on-board electronics
- Four-way split tip design secures center pin to component with highest possible contact tension

- High-strength precision molded barrels with integrated grips for durable component insertion and removal
- Rugged compact single PVC jacket for easy installation routing and maximum resistance to solvent, gas and oil exposure
- Multi-strand oxygen-free high conductivity copper eliminates damaging moisture penetration and delivers optimum frequency bandwidth
- Cable specifications meet or exceed UL and ABYC designated requirements for construction and performance.

AUXILIARY INPUT JACKS



MAAUXUSB - 3.5mm Marine Mini-Pin/USB Combo Port
• Male RCA connection
• 24-inches
• Interconnect with standard RCA cables and plug into an auxiliary input source



MAAUXF - 3.5mm Auxiliary Audio Input Jack
• Female RCA connection
• 24-inches
• Interconnect with standard RCA cables and plug into an auxiliary input source



MARCABM - Marine-grade Male-to-Male RCA Barrel Connector



MARCABF - Marine-grade Female-to-Female RCA Barrel Connector



MARCAYMFF - Marine-grade RCA Y-Cable
• Two-way splitter cable with one male connector and two female connectors

All speakers and grilles are sold **individually** unless otherwise noted.



Polk Ultramarine's sleek and powerful line of product delivers high-end features and superior sound that sets a new standard for audio entertainment.



- PRC100BC - Wired Remote Control**
- Compact footprint - just 2.4" in diameter
 - Waterproof (IPX6)
 - White backlit illumination
 - Spin-on mounting clamp
 - 2"-diameter mounting hole
 - Corrosion resistant materials/finishes (ASTM B117)
 - UV resistant materials/finishes (ASTM D4329)



- PRC200BC - Wired Remote Control**
- Waterproof (IPX6)
 - White backlit illumination
 - Surface or rear flush mount
 - Corrosion resistant materials/finishes (ASTM B117)
 - UV resistant materials/finishes (ASTM D4329)



- PRCEC18**
- 18 ft. extension cable for Polk wired remote controls



- PRCYC1**
- "Y" cable can connect multiple Polk wired remote controls



- PA D1000.1 - Monoblock Power Amplifier**
- Dimensions: 1.81"H x 12.94"W x 6.75"D



- PA D4000.4 - 4-channel Power Amplifier**
- Dimensions: 1.81"H x 10.94"W x 6.75"D



- PA D2000.2 - 2-channel Power Amplifier**
- Dimensions: 1.81"H x 8.25"W x 6.75"D



- PA D5000.5 - 5-channel Power Amplifier**
- Dimensions: 1.81"H x 13.31"W x 6.75"D

Features on all amplifiers:

MOSFET switching power • Efficient Class-D bridgeable design • Signal-to-noise ratio: 105dBA • Distortion at rated power: <0.1%
Filter slope: 12 dB octave • Max sensitivity: 200mV - 6V dB • 12V and ground cable gauge: 4AWG • Protection circuitry: thermal, DC offset, reverse polarity and short circuit • Nickel-plated wire terminals and RCA connectors • Stainless-steel hardware



Polk Ultramarine app controls all of the primary functions of App Ready Polk stereos directly from a phone or tablet. It can be downloaded from the App Store on iTunes for Apple devices, or the Google Play Store for Android devices, and found by searching for "Polk Ultramarine".

UM1A - AM/FM/200 Watts/App Ready/SiriusXM-Ready™/iPod®/iPhone® Ready/Bluetooth®/USB

- Two-piece modular design (commander and hideaway tuner/amp module)
- Waterproof commander (IPX6) and module (IPX5)
- App Ready - All primary unit functions can be controlled by any iOS or Android-based mobile device with downloaded Polk Ultramarine app
- Bluetooth streaming audio (A2DP) and controls (AVRCP)
- SiriusXM-Ready (SXV300V1M tuner and subscription required)
- Full iPod/iPhone controls and charging (via rear USB input)
- Seven-channel NOAA weatherband tuner
- White backlit illumination
- MP3 CODEC
- RBDS w/PTY search
- Low/Mid/High EQ tone controls
- USB inputs (2)
- Auxiliary audio inputs (2)
- Microphone input (via UMZC4A zone 4)
- Four-channel speaker output (20W (RMS) x 4)
- Six-channel line-level outputs (front/rear/subwoofer, RCA, 4V)
- OE-friendly, waterproof, locking Deutsch connectors
- Detachable chrome trim ring for front mounting option
- Silicone rubber protective cover
- Wired remote control ready (PRC100BC, PRC200BC)

PA4A

Differences from UM1A:

- Only **one** USB input for connection of digital media devices
- Only **one** auxiliary audio input
- **ISO** connector
- **No** zone control
- **No** subwoofer output
- **No** microphone input

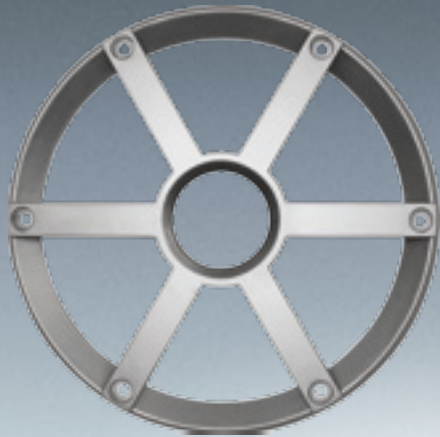


COMMANDER

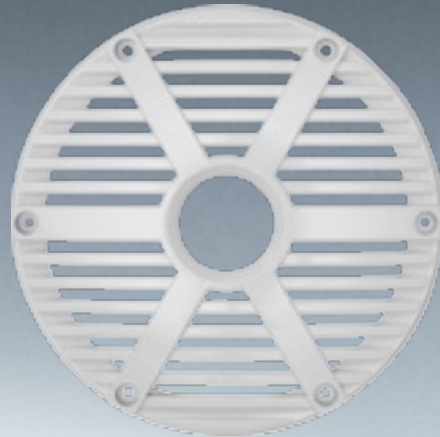


The UMZC4A Zone Control Module is the perfect accessory for the UM1A stereo. Complete product details on page 21.

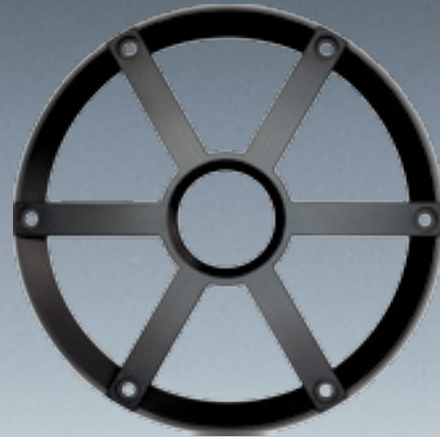
Compatible Grilles for UMCX650 Speaker



UMCX650SGS - Silver Sport Grille



UMCX650HGW - White Hybrid Grille



UMCX650SGB - Black Sport Grille



- UMTM200HB** - 2" Coaxial Speaker
- 200 watts maximum power handling
 - Moisture-resistant sealed design
 - Santoprene surround
 - Mounting gasket
 - Inline passive crossover included



- DB651** - 6.5" Coaxial Speaker
- 180 watts maximum power handling
 - .75" swivel-mount tweeter
 - Dynamic Balance® driver technology
 - Voice coil: 25mm
 - Klippel optimized components
 - Sold as a PAIR

- UMCX650** - 6.5" Coaxial Speaker
- 175 watts maximum power handling
 - Moisture-resistant sealed design protects both cone and magnet
 - Infinite baffle
 - Santoprene surround
 - Mounting gasket
 - Includes stainless steel terminals and mounting hardware

- UMCX650LK1** - LED Light Kit for 6.5" UMCX650 Grilles
- Selectable blue or white light

DID YOU KNOW...
Dynamic Balance driver technology allows our engineers to design out distortion-causing driver and system resonances, so you only hear the good sounds.

All speakers and grilles are sold **individually** unless otherwise noted.

Our in-house Technical Service staff is prepared to help you efficiently install and use our products. Our Application Technicians specialize in close, on-site support for our customers. This minimizes the time spent troubleshooting on a production line by spotting line audit issues in advance. It also gives our team the ability to research and investigate issues that come up related to the product.



UMSW1000SGB - Black Sport Grille

Compatible Grilles
for UMSW1000 Subwoofer

UMSW1000SGS - Silver Sport Grille

UMSW1000HGW - White Hybrid Grille

UMSW1000 - 10" Subwoofer

- 175 watts maximum power handling
- Infinite baffle
- 4 ohm impedance
- Mica filled PP cone
- Protected magnet and cone
- Santoprene surround
- Stainless steel terminals and mounting hardware

**UMSW1000K1 - LED Light Kit
for 10" UMSW1000 Grilles**

- Selectable blue or white light

Compatible Grilles for
MM1040UM Subwoofer

MM10GUMBS - Black Grille with Silver Center

MM10GUMSB - Silver Grille with Black Center

MM1040UM - 10" Subwoofer

- 700 watts maximum power handling
- Dynamic Balance® driver technology
- Polymer woofer cone
- Butyl rubber surround
- Lightweight and rigid carbon composite basket
- Stainless-steel, heavy-duty input terminals

UMZC4A - Zone Control Module

- Compatible with UM1A stereo only
- Expands system capabilities for control of volume in up to four different zones of boat
- Waterproof solid chassis (IPX5)
- Separate subwoofer control per zone
- Operating voltage: 10-16VDC
- Auxiliary line-level audio input
- Microphone output (via UM1A, zone 4)
- Two-wire power system with non-volatile memory

- Conformal coated PCB
- Surface mount allows for .5" space underneath the bottom
- Wired remote control ready (PRC100BC, PRC200BC)
- OE-friendly, waterproof, locking Deutsch connectors
- UV resistant materials/finishes (ASTM D4329)
- Corrosion resistant materials/finishes (ASTM B117)
- Compatible with Murphy & Medallion display/controls
- Regulatory certifications: FCC/CE/C-tick/RoHS



STEREO/DVD PLAYER FEATURES	MS2A	MS3A	MS30	DVDB01	DV2011
Max Power Output (Watts x Channels)	40 x 4	40 x 4	40 x 4	N/A	40 x 4
Waterproof/Water Resistant Rating	IPX5	IPX6	IPX6	N/A	N/A
App Ready	Y	Y	N	N	N
Bluetooth®	Y	Y	N	N	N
iPod®/iPhone® Ready	Y	N	N	N	N
USB Input	Y	Y	Y	N	N
AM/FM Tuner	Y	Y	Y	N	Y
AM/FM Frequency - US/European Selectable	Y	Y	Y	N/A	N
Chassis	Sealed	Fully Enclosed	Sealed	Sealed	Sealed
Compatible Wired Remote Control(s)	MWR75/MWR150	N/A	N/A	MWR75	MWR75
Positive LCD Display	Y	Y	Y	Y	Y
CD/CD-R/CD-RW Playback	N/A	N	N/A	Y	Y
MP3/WMA Encoded CD Playback	N/A	Y	N/A	Y	Y
Auxiliary Audio Input	Y	Y	Y	N	Y
Pre-amp Line-Level Audio Output	Y	Y	Y	Y	Y
Audible Low Battery Warning	Y	N	N	N	N
Two-wire Power with Non-Volatile Memory	Y	Y	N	N	N
Dimensions (Inches)	8.25 x 2.69	3.5 (diam.)	3.5 x 4	7.5 x 2.25	7.5 x 2.25
Mounting Hole Dimensions (Inches)	7.25 x 2.12	3 (diam.)	3 (diam.)	7.25 x 2	7.25 x 2
Mounting Depth (Inches)	6.3	2.36	3.3	6.5	6.5
Corrosion Resistant Materials/Finishes (ASTM B117)	Y	Y	Y	N	N
UV Resistant Materials/Finishes (ASTM D4329)	Y	Y	Y	N	N
Conformal Coated PCB	Y	Y	Y	N	N
Plastic PCB Insulator	Y	N/A	N	N	N
Regulatory Certifications	FCC/CE/C-Tick/RoHS	FCC/CE	FCC/CE	FCC	FCC

SPEAKER FEATURES	MS650	MSX65	JXHD30HPC	MS6007S/W	MSX60S	MSX60RV	MSX65R	MSX60B/CP
Power Handling (Watts)	50	75	65	60	65	75	75	75
Waterproof	Y	Y	Y	Y	Y	Y	Y	Y
Sensitivity @ 1W/1 Meter (dB)	86	88	83	88	91	88	88	89
Frequency Response (Hz-kHz)	50-20	65-20	90-20	67-20	65-20	65-20	65-20	65-20
Nominal Impedance (Ohms)	4	4	4	4	4	4	4	4
High-Impact ABS Grille	N/A	N/A	Y	Y	Y	Y	Y	Y
Grille Diameter (Inches)	6.5	6.5	3.5	7.12	7.12	7.12	6.5	7
Mounting Hole (Inches)	5	5.25	3	5	5	5	5	5
Mounting Depth (Inches)	2.4	2.3	3.3	2.38	2.38	2.38	2.38	2.3
Tweeter Type	Dome	Dome	Dome	Dome	Dome	Dome	Dome	Dome
Tweeter Material	Mylar	Silk	Silk	Titanium	Titanium	Silk	Silk	Silk
Polypropylene Woofer Cone	Y	Y	Y	Y	Y	Y	Y	Y
Protected Magnet/Rear Cone Design	Y	Y	Y	Y	Y	Y	Y	Y
Corrosion Resistant Materials/Finishes (ASTM B117)	Y	Y	Y	Y	Y	Y	Y	Y
UV Resistant Materials/Finishes (ASTM D4329)	Y	Y	Y	Y	Y	Y	Y	Y

STEREO FEATURES	MA100	MA200	MA300	MA400
Max Power Output (Watts x Channels)	40 x 4	40 x 4	40 x 4	50 x 4
Waterproof/resistant Rating	IPX6	IPX5	IPX6	IPX6
Dimensions (Inches)	3 (diam.)	8.25 x 2.75	6.5 x 2.12	5.12 x 3.75
Chassis	Fully Enclosed	Sealed	Sealed	Sealed
App Ready	Y	Y	Y	Y
Bluetooth®	Y	Y	Y	Y
iPod®/iPhone® Ready	N	Y	Y	Y
SiriusXM-Ready™	N	N	N	Y
USB Input	Y	Y	Y	Y
AM/FM Tuner	Y	Y	Y	Y
AM/FM Frequency - US/European Selectable	Y	Y	Y	Y
NOAA Weatherband	N	N	Y	Y
Compatible Wired Remote Control(s)	N/A	MARC100	MARC100	MARC200
Positive LCD Display	Y	Y	Y	Y
CD/CD-R/CD-RW Playback	N	N/A	N/A	N/A
MP3/WMA Encoded CD Playback	Y	N/A	N/A	N/A
Auxiliary Audio Input	Y	Y	Y	Y
Preamp Line-Level Outputs	Y	Y	Y	Y
Radio Broadcast Data System Text Display	N	N	N	Y
Low Battery Audible Warning	N	Y	Y	Y
Two-wire Power with Non-Volatile Memory	Y	Y	Y	Y
Mounting Hole (Inches)	3 (diam.)	7.25 x 2.12	5.5 x 2.75	.75
Mounting Depth (Inches)	2.36	6.25	1.75	N/A
Corrosion Resistant Materials/Finishes (ASTM B117)	Y	Y	Y	Y
UV Resistant Materials/Finishes (ASTM D4329)	Y	Y	Y	Y
Conformal Coated PCB	Y	Y	Y	Y
Plastic PCB Insulator	N/A	Y	N	Y
Regulatory Certifications	FCC/CE	FCC/CE/ C-Tick/RoHS	FCC/CE/ C-Tick/RoHS	C-Tick/RoHS

REMOTE FEATURES	MARC100	MARC200
Waterproof/resistant Rating	IPX6	IPX6
Positive LCD Display	Y	Y
Backlit Illumination	Y	Y
Dimensions (Inches)	4.25 x 2.5 x 1	4.25 x 2.5 x 1
Mounting Hole Diameter (Inches)	1.62	1.62
Mounting Depth (Inches)	.25	.25
Corrosion Resistant Materials/Finishes (ASTM B117)	Y	Y
UV Resistant Materials/Finishes (ASTM D4329)	Y	Y

SPEAKER FEATURES	MS650	MSX65
Power Handling (Watts)	50	75
Waterproof	Y	Y
Sensitivity @ 1W/1 Meter (dB)	86	88
Frequency Response (Hz-kHz)	50-20	65-20
Nominal Impedance (Ohms)	4	4
High-Impact ABS Grille	N/A	N/A
Grille Diameter (Inches)	6.5	6.5
Mounting Hole (Inches)	5	5.25
Mounting Depth (Inches)	2.4	2.3
Tweeter Type	Dome	Dome
Tweeter Material	Mylar	Silk
Polypropylene Woofer Cone	Y	Y
Protected Magnet/Rear Cone Design	Y	Y
Corrosion Resistant Materials/Finishes (ASTM B117)	Y	Y
UV Resistant Materials/Finishes (ASTM D4329)	Y	Y



AMPLIFIER FEATURES	PA D1000.1	PA D2000.2	PA D4000.4	PA D5000.5
	500W x 1 @ 4 ohms	125W x 2 @ 4 ohms	125W x 4 @ 4 ohms	70W x 4; 200W x 1 (sub) @ 4 ohms
	800W x 1 @ 2 ohms	250W x 2 @ 2 ohms	200W x 4 @ 2 ohms	100W x 4; 400W x 1 (sub) @ 2 ohms
	1200W x 1 @ 1 ohms	500W x 1 @ 4 ohms (bridged)	400W x 2 @ 4 ohms (bridged)	200W x 2 @ 4 ohms (bridged)
				500W x 1 (sub) @ 1 ohm
Total Frequency Response	20Hz - 200Hz	20Hz - 20kHz	20Hz - 20kHz	20Hz - 20kHz
High Pass Filter Frequency	N/A	20Hz - 4kHz	20Hz - 4kHz (frnt)/20Hz - 4kHz (rear)	40Hz - 400Hz (frnt)/40Hz - 4kHz (rear)
Low Pass Filter Frequency	40Hz - 220Hz	50Hz - 5kHz	50Hz - 5kHz (frnt)/20Hz - 4kHz (rear)	80Hz - 4kHz (frnt)
Fusing and Power/Type	Three 30 Amp ATC	Two 25 Amp ATC	One 40 Amp and one 35 Amp ATC	Two 40 Amp ATC
Effective Damping Factor	>150	>100	>100	N/A
Line Level Inputs	Y	Y	Y	Y
Line Level Outputs	Y	Y	N	N
Weight (lbs.)	6.5	3.75	5	6.75

STEREO FEATURES	UM1A
Max Power Output (Watts x Channels)	50 x 4
Waterproof/Water Resistant Rating	IPX6/IPX5
App Ready	Y
Bluetooth®	Y
iPod®/iPhone® Ready	Y
USB Inputs	Y (2)
AM/FM Tuner	Y
AM/FM Frequency - US/European Selectable	Y
Chassis	N/A
Compatible Wired Remote Control(s)	PRC100BC/PRC200BC
Positive LCD Display	Y
CD/CD-R/CD-RW Playback	N/A
MP3/WMA Encoded CD Playback	N/A
Auxiliary Audio Input	Y (2)
Pre-amp Line-Level Audio Output	Y
Audible & Visual Low Battery Warning	Y
Two-wire Power with Non-Volatile Memory	Y
Dimensions (Inches)	5.5 x 3.9
Mounting Hole Dimensions (Inches)	4.7 x 3.2
Mounting Depth (Inches)	.6
Corrosion Resistant Materials/Finishes (ASTM B117)	Y
UV Resistant Materials/Finishes (ASTM D4329)	Y
Conformal Coated PCB	Y
Plastic PCB Insulator	Y
Regulatory Certifications	FCC/CE/C-Tick/RoHS

SPEAKER FEATURES	UMCX650	UMTM200HB	DB651
Waterproof	Y	Y	N
Power Handling (Watts)	120	200	180
Sensitivity @ 1W/1 Meter (dB)	88	80	92
Frequency Response (Hz-kHz)	40-22	270-20	35-22
Nominal Impedance (Ohms)	4	4	4
Mounting Hole (Inches)	5	2.25	5
Mounting Depth (Inches)	4.7	1.4	2.25
Tweeter Type	Dome	N/A	Dome
Tweeter Material	Aluminum	N/A	Silk/Polymer
Woofers Material	Polymer/Mica	Polypropylene	Polymer/Mica
UV Resistant Materials/Finishes (ASTM D4329)	Y	Y	Y

It is the purpose of ASA Electronics® to develop and maintain a leadership position in the research, development, manufacturing, and worldwide distribution of mobile grade electronics.

Our reason for being is to develop quality products designed to meet the specialty needs of our customers at a competitive price. Our uniqueness is derived from our ability to innovate in response to our customers’ special application needs. To better anticipate those needs, we work closely to form alliances with our customers which allows us to participate in the planning and design of their new products.

For immediate customer service or technical support, call **877-305-0445**.

Follow ASA Electronics on:

