

## ADVANTAGES IN OUR SOLUTIONS

---



### REDUCED CONSUMPTION

a clean hull can reduce fuel consumption by up to 20%



### REDUCED POLLUTION

a direct consequence of the reduced fuel consumption is lessened environmental impact



### INCREASED PERFORMANCE

a clean hull results in an optimal, maximized performance



### HULL INSPECTION

the innovative cleaning system also makes it possible to monitor and check the condition of the hull

## ABOUT US

---

KeelCrab is the first of several technologies that the company has implemented and distribute with a view to reducing the pollution caused by the chemical substances currently used on millions of vessels. The hallmark of Aeffe s.r.l. lies in its constant efforts to combine technology with an eco-sustainable approach, with the main aim of cutting vessel maintenance costs.



[www.keelcrab.com](http://www.keelcrab.com)

Aeffe S.r.l.,  
Via Rezzonico, 39 22100 - Como



+39 031 931010  
+39 333 4524341



[info@keelcrab.com](mailto:info@keelcrab.com)



**KEELCRAB™**  
*sail-one*

---

**ROBOTIC SOLUTION FOR THE  
CARE OF YOUR HULL**

# UNDERWATER REMOTELY OPERATED

**Keelcrab Sail-ONE** is an underwater robot made entirely in Italy in order to carry out automated cleaning and hull inspection activities. Designed mainly for cleaning the hull of sailing boats (of any size), yachts and maxi yachts, with a particularly pleasing result at the waterline and on the planing parts as an instrument to optimise hull maintenance. The robot is characterized by an exoskeleton in plastic material with neutral hydrostatic balance; The vacuum / aspiration force is generated by a central impeller or turbine (propeller), driven by an electric motor, which performs the dual function of keeping the robot attached to the hull and removing algae formed thereunder. The movement is driven by rubber brushes on tracks that allow movements in all directions.

To improve removal of vegetation efficiency brushes with nylon bristles have been, these can be of various length and diameter. The high-resolution underwater camera IP68 allows **Keelcrab Sail-ONE** to be maneuvered by means of a wired remote control with display of streaming video on a 7-inch high-resolution screen.

Its certified brushes certified not remove antifouling paints stretched on the hulls. Numerous tests with excellent results, have shown that the constant removal of the first layer of algae (3 mm) dramatically prolongs the efficiency of the anti-fouling agent; this means that barnacles cannot form in the medium term, also in boats stop in port waters from more than 8/10 months.

The robot is also provided with a bag (optional on request) for the recovery of the waste material, algae or vegetation, resulting from cleaning operation.

Highly functional system wiring (on yachts and maxi yachts) and the connection with their on-board systems:  
**Keelcrab Sail-ONE** optional unique.



## Remote control device with display

7-inch high-resolution screen to maneuver your Keelcrab



## Quick cleaning

Keelcrab cleans 1.4 m<sup>2</sup> per minute

## Brushes can be replaced quickly

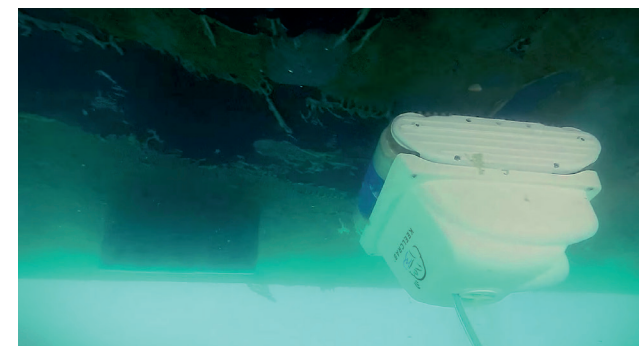
Brushes with different abrasive levels to adapt to all kinds of cleaning requirements

## IP68 video camera and LED

The IP68 video camera and powerful LED allow Keelcrab to monitor the hull and check conditions

## Guarantee

24 months or 500 hours of use



## TECHNICAL INFO

WEIGHT  
9,5 kg

LENGTH  
42,5 cm

WIDTH  
42,5 cm

HEIGHT  
32 cm

SPEED  
1,5 m<sup>2</sup> per min

MORE  
INFORMATIONS

[www.keelcrab.com/keelcrab-sail-one](http://www.keelcrab.com/keelcrab-sail-one)

