



## Marine Service Catalogue



### Whale Support

UK

tel: +44 (0)28 9127 0531  
info@whalepumps.com  
whalepumps.com

USA

tel: +1 802 367 1091  
fax: +1 802 367 1095  
usasales@whalepumps.com  
whalepumps.com

Call us directly for product and installation advice

# Contents

<b>SECTION 1 NEW PRODUCTS</b>	<b>4</b>
Grey IC	5
Gulley IC	5
Bilge IC	5
<b>SECTION 2 ELECTRIC AND MANUAL BILGE PUMPS</b>	<b>6</b>
<b>Electric Bilge</b>	
Gulper 320 (12V d.c. pump: BP2052(B), 24V d.c. pump BP2054(B))	7
<b>Manual Bilge</b>	
Gusher 25 (discontinued 1989)	8
Gusher 30 (on deck: BP3000, on bulkhead: BP3010, thru-deck: BP3020)	9
Gusher 10 Mk 3 (standard: BP3708, thru-deck/bulkhead: BP3740)	11
Gusher Titan (standard: BP4402)	13
Gusher Titan (underdeck: BP4410)	14
Gusher Urchin (standard: BP9005, and removable handle: BP9021)	16
Gusher Urchin (underdeck: BP9013)	18
Whale/Henderson Compac 50 (BP0350)	20
Mk5 Universal Pump (BP0510/MH0510)	21
Mk 5 - Double Action Pump	23
(bulkhead: MH5550, underdeck: MH5560, on deck: MH5570)	
Smartbail Compact Integrated Cover Pump	25
<b>SECTION 3 ELECTRIC AND MANUAL FRESHWATER PUMPS</b>	<b>26</b>
<b>Electric Galley Pumps</b>	
Automatic Pressure Pump Range (FW0814, FW1214, FW1215, FW1225 UF1815, UF2014, UF2015, UF8015, UF8025)	27
<b>Manual Galley Pumps</b>	
V Pump Mk 6 (GP0650 introduced in 1993)	28
Flipper Pump Mk 3 and 4 (GP0418)	29
Gusher Galley Mk 2 Pump (discontinued 1984)	30
Gusher Galley Mk 3 Pump (GP0550 right lever, GP0551 left lever- introduced in 1984)	31
Tiptoe Mk 4 Pump (GP1309)	32
Babyfoot Pump (GP4618)	33

## Faucets and Showers

<b>Elegance Single and Mixer</b> (11mm and 12mm smooth connections)	34
Single: RT1010, RT6010	
Mixer: RT2010, RT2007, RT2035, RT7010, RT7007	
<b>Elegance Single and Mixer Faucets Mk 2</b> (1/2" threaded connections)	36
Single: RT1210, Mixer: RT2210	
<b>Elegance Combo (Faucet/ Shower)</b>	37
(12mm version: Cold Only-RT1500, Mmixer-RT2500, RT2498)	
<b>Elegance Combo &amp; Faucet/Shower</b>	39
(Cold only: RT1470 - Combined Model with Faucet and Shower Functions, Mixer: RT2498)	
<b>Elite Faucets and Showers</b>	41
(MT0111, MT0151, MT0161)	

## SECTION 4 GREY / SHOWER WASTE PUMPS 43

### Electric Grey Waste

<b>Gulper 220 Shower Waste Pump BP1552</b> (12V d.c.), BP1554 (24V d.c.)	44
<b>Gulper 320 Shower Waste Pump BP2052</b> (12V d.c.), BP2054 (24V d.c.)	45
<b>Grey Waste Tank Range</b> GW0810, GW0831, GW1610, GW1631	46

## SECTION 5 BLACK / TOILET WASTE PUMPS 47

### Electric

<b>Gulper Toilet Waste Pump BP2552(B)</b> (12V d.c.), BP2554(B) (24V d.c.)	48
--	----

### Manual

<b>Mk 5 - Sanitation</b> BP5027, BP5035	49
---	----

## SECTION 6 FISHBOX / BAITWELL 51

### Electric

<b>Gulper Grouper</b> BP4572 (12V d.c.), BP4574 (24V d.c.), BP4672 (12 V d.c.), BP4674 (24 V d.c.)	52
<b>Gulper 320</b> BP2052(B) (12V d.c.), BP2054 (24V d.c.)	53

## SECTION 7 WASHDOWN 54

<b>Electric Washdown Pump</b>	55
-------------------------------	----

## SECTION 8 ACCESSORIES 56

<b>TCL 2 Locker Door</b> (LD2000)	57
<b>TCL 3 Locker Door</b> (LD3000)	57
<b>TCL 4 Locker Door</b> (LD4000, clear lid version: LD4002 )	57

## New Products



4

At the heart of every Whale IC (Intelligent Control) product lies innovative electronic control circuitry built in. This enables IC sensor accessories to communicate directly with IC pumps to control their performance. These accessories send signals to built-in intelligent software which then control the pumps that react as required.



## Grey IC - WM8284, WM8484

Complete pre-wired grey waste system - Handles waste from multiple drains using the high capacity Gulper® IC pump.

### Service Kits:

**AK2050** Replacement Pump Head

### Accessories:

**AK2086B** Deutsch® Connector Extension Cable 6m (18ft)

**AK2081B** Traditional Deutsch® to 2 Spade Connector

**BP2082B** Gulper IC, 12V (valid until June 2013)

**BP2084B** Gulper IC, 24V (valid until June 2013)

**WM1982B** (2m/6ft) & **WM1984B** (4m/12ft) Two Way Manifold – 3/4" (19mm)

**WM2582B** (2m/6ft) & **WM2584B** (4m/12ft) Two Way Manifold – 1" (25mm)

**WM3882B** (2m/6ft) & **WM3884B** (4m/12ft) Two Way Manifold – 1 1/2" (38mm)



## Gulley IC - SG8284, SG8484

Complete pre-wired grey waste management system - Includes a single outlet shower drain gulley linked to the high capacity Gulper® IC.

### Service Kits:

**AK2050** Replacement Pump Head

### Accessories:

**AK2086B** Deutsch® Connector Extension Cable 6m (18ft)

**AK2081B** Traditional Deutsch® to 2 Spade Connector

**BP2082B** Gulper IC, 12V (valid until June 2013)

**BP2084B** Gulper IC, 24V (valid until June 2013)

**SG1982B** (2m/6ft) & **SG1984B** (4m/12ft) Large Gulley IC – 3/4" (19mm)

**SG3482B** (2m/6ft) & **SG3484B** (4m/12ft) Small Gulley IC – 3/4" (19mm)



## Bilge IC - SI8284, SI8484

Complete pre-wired bilge system including high capacity Gulper® IC pump and Strainer IC to fit in low confined bilge spaces.

### Service Kits:

**AK2050** Replacement Pump Head

### Accessories:

**AK2086B** Deutsch® Connector Extension Cable 6m (18ft)

**BP2083B** Gulper IC, 12V

**BP2085B** Gulper IC, 24V

**SI3422B** (2m/6ft) & **SI3424** (4m/12ft) Strum Box – 3/4" (19mm)

## Electric and Manual Bilge Pumps





## Electric Bilge Pumps

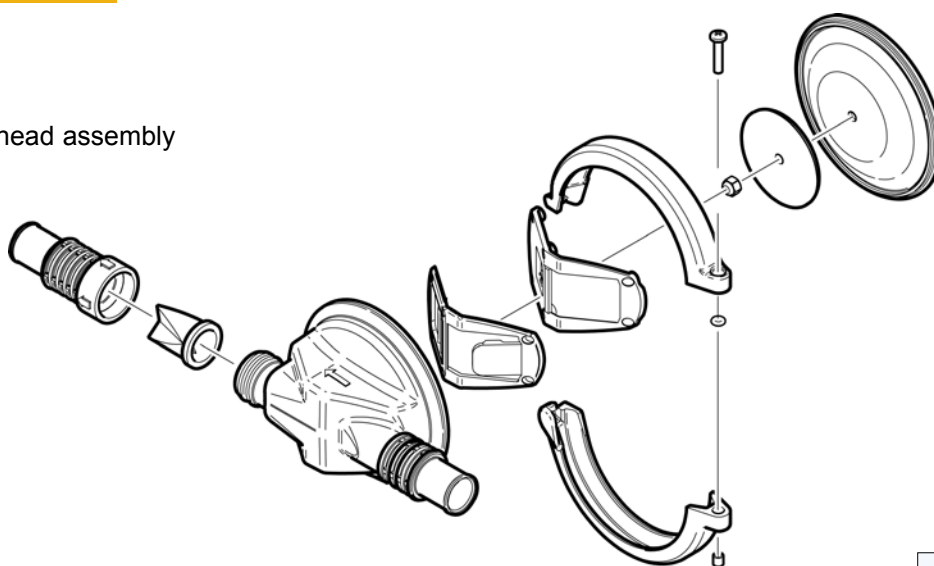
### Gulper® 320 Remote Mount Bilge Pump

**BP2052(B) (12V d.c. version), BP2054(B) (24V d.c. version)**

CURRENT  
MODEL



AK2050 Pump head assembly



AK2050

#### Accessories

**SB3422 19mm Strainer/Strumbox**  
(Top/Side entry - retail packed)

**EB3364 1" Elbow**

**LV1215 1" / 1 1/2" Non Return Valve**

**SF5131 3/4" Skin Fitting**

**SF5204 1" Skin Fitting**

#### Service Kits

**AK2050 Replacement Pump Head for Gulper® 320,  
Gulper® 220 and Gulper® IC**

Qty	Containing
1	Diaphragm
1	Nyloc Nut M5
1	Screw Hex M5 x 16mm
1	Outlet Valve Tricuspid
1	Marine Head 3/4" and 1"
1	Valve Inlet and Outlet
1	Valve Plate
1	Outlet Valve Housing

**AS1562 Gulper Clamping Ring Kit**

Qty	Containing
1	Clamping Ring



AS1562



SB3422

See page 60 for further contact information





## Manual Bilge Pumps

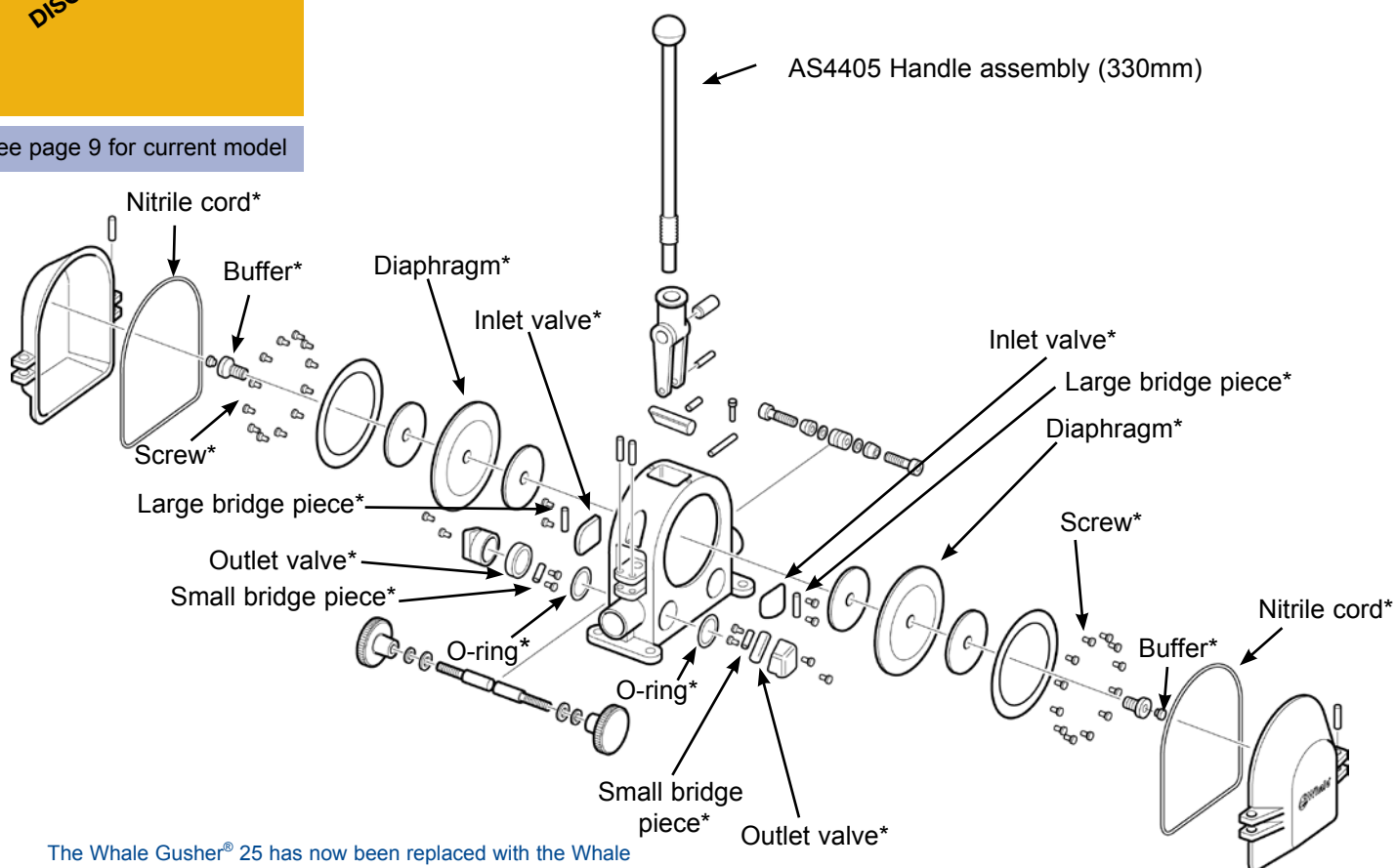
### Gusher® 25 Pump

#### Whale Gusher 25 Pump (discontinued in 1989)

**Note\*** Contained in Service Kit AK3528

PRODUCT  
DISCONTINUED

See page 9 for current model



The Whale Gusher® 25 has now been replaced with the Whale Gusher® 30 (see page 9 for more information):  
On Deck: BP3000, On Bulkhead: BP3010, Thru Deck: BP3020

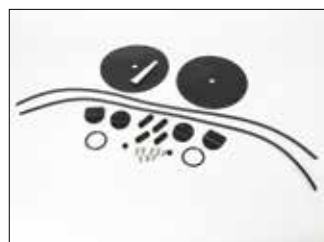
8

#### Service Kits

##### AK3528 Service Kit with Complete Set of Serviceable Parts for Whale Gusher® 25 (Nitrile®)

Qty	Containing
1	Tube of adhesive
2	Buffer
2	Outlet valve
2	O-ring
2	Nitrile cord
2	Inlet valve
4	Screw 2BA
2	Small bridge piece
2	Diaphragm (Nitrile)
2	Large bridge piece

##### AS4405 Handle Assembly s/s with Lanyard (330mm)



AK3528



AS4405





## Manual Bilge Pumps

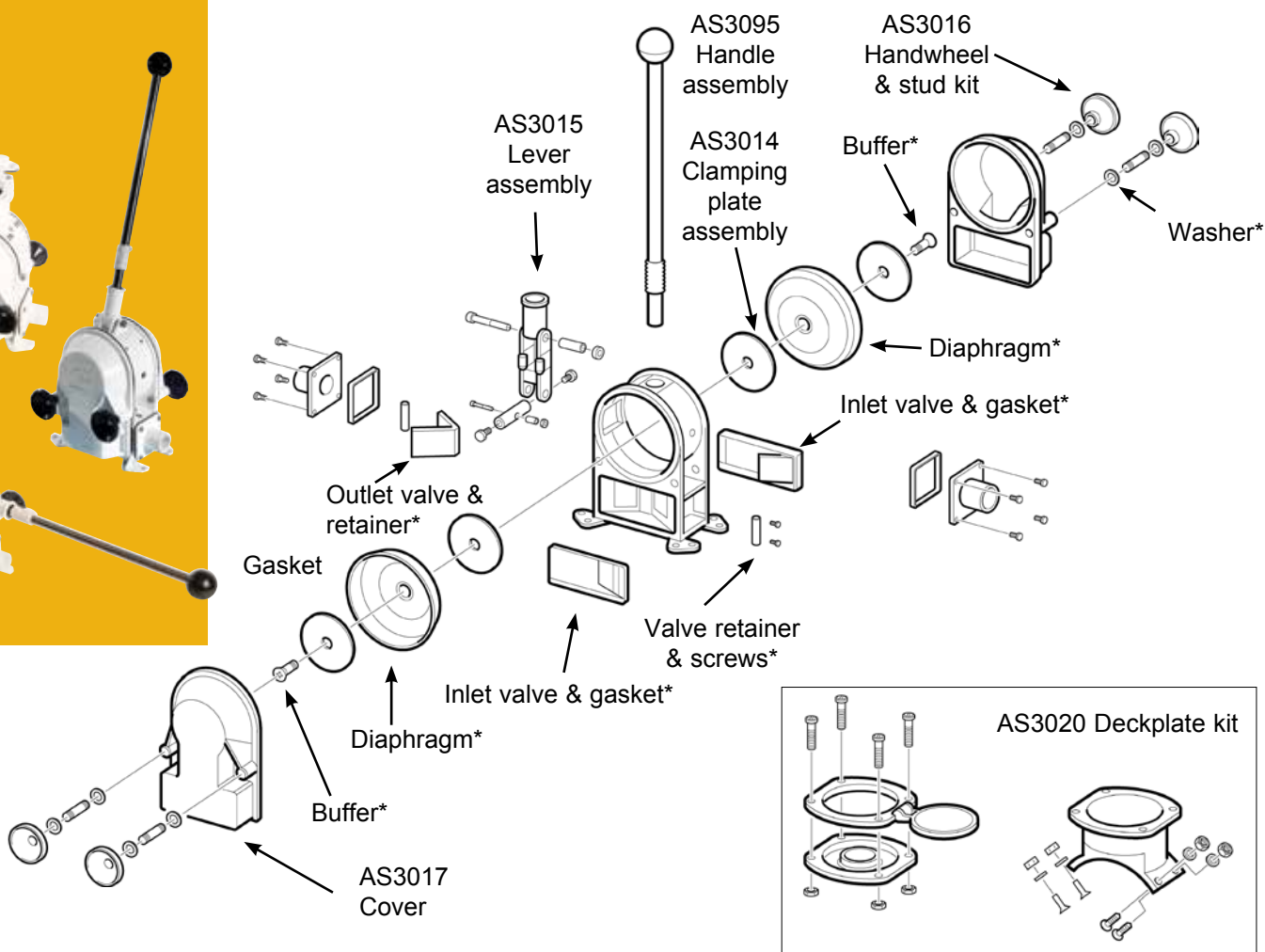
### Gusher® 30 Pump

**On Deck: BP3000, On Bulkhead: BP3010, Thru Deck: BP3020**

**Largest Capacity Manual Bilge Pump in the Whale Range**

CURRENT  
MODEL

**Note\*** Contained in Service Kit AK3051



#### Accessories

**AS3020 Deckplate Kit Assembly**

**AS3095 Spare Handle**

**DP3804 Deckplate**

#### Service Kits

**AK3051 Service Kit of Serviceable Parts for Whale Gusher® 30**

Qty	Containing
2	Screw No 6x1 1/4"
2	Diaphragm
2	Inlet valve & gasket
1	Outlet valve
2	Valve retainer
2	Valve chamber gasket
4	Washer nylon M10
2	Buffer

#### AS3015 Lever Assembly

Qty	Containing
1	Fork insert
1	Lever
1	Lever bush
2	Buffer
1	Nylon nut M6
1	Nylon nut M8
2	Clamping screw
1	Connecting rod
1	Connecting rod bush
1	Lever bush
1	Lever fulcrum bolt
1	Body fulcrum bolt

#### AS3016 Handwheel & Stud Kit

Qty	Containing
2	Nylon nut M8
2	Stud
2	Washer nylon M10
2	Hand wheel nut

#### AS3017 Cover Gusher® 30

Qty	Containing
1	Cover



## Manual Bilge Pumps

### Gusher® 30 Pump

**On Deck: BP3000, On Bulkhead: BP3010, Thru Deck: BP3020**

**Largest Capacity Manual Bilge Pump in the Whale Range**



AK3051



AS3014



AS3015



AS3016



AS3017



AS3020



AS3095



AS3725



DP3804

### Service Kits (Continued)

#### AS3725 Gaiter Kit for Deckplates

Qty	Containing
1	Gaiter (for metal or plastic deckplate)
1	O-ring (for metal deckplate)

#### AS3020 Deckplate Kit Assembly

Qty	Containing
4	Nut M6
1	Lid
1	Deckplate
1	O-ring (deckplate lid)
1	Nyloc nut M6
1	Gaiter
1	Underdeck bracket
4	Screw HEX HD M6x20
4	Screw M6x50

#### AS3014 Clamping Plate Kit

Qty	Containing
4	Clamping plates
2	Clamping screws
2	Buffers

#### AS3095 Handle Assembly (Standard) s/s 450mm

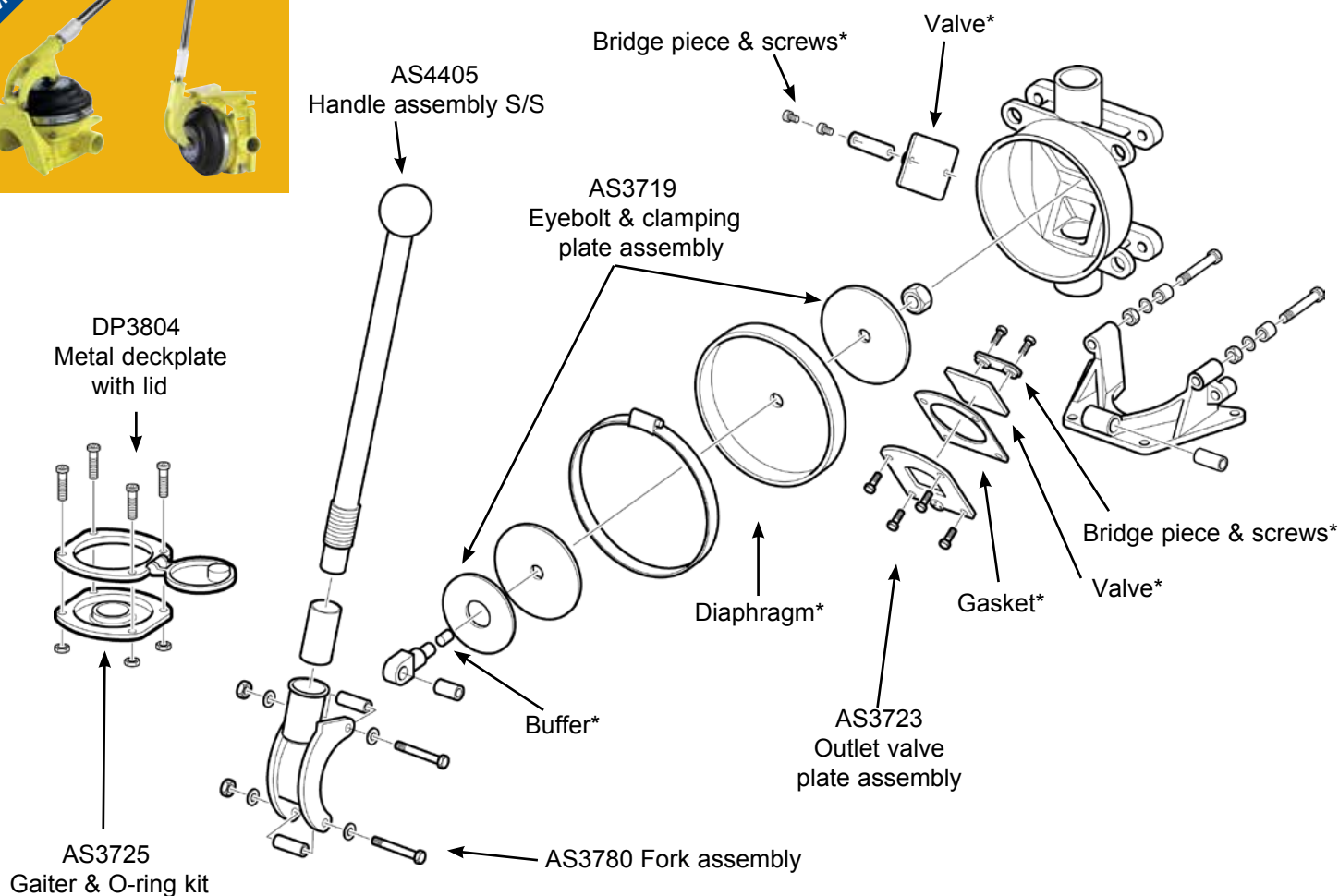


## Manual Bilge Pumps

### Gusher® 10 Mk 3

**On Deck/Bulkhead: BP3708, Thru Deck/Bulkhead: BP3740 - Diecast Alloy Bilge Pump**

**Note\*** Contained in Service Kit AK3706 (Neoprene™) or AK3714 (Nitrile®)



#### Accessories

- DP3804 Alloy Deckplate
- DP8904 Plastic Deckplate with Lid
- AS4405 Spare Handle
- SB4222 Side Entry Strainer
- SB5865 Top Entry Strainer
- SF5425 1 1/2" Skin Fitting
- LV1215 1" / 1 1/2" Non Return Valve
- EB3488 1 1/2" Elbow

#### Service Kits

**AK3706 Service Kit with Complete Set of Serviceable Parts for Whale Gusher® 10 Mk 2 & Mk 3 Pumps (Neoprene™) (See list below)**

**AK3714 Service Kit with Complete Set of Serviceable Parts for Whale Gusher® 10 Mk 2 & Mk 3 Pumps (Nitrile®)**

Qty	Containing
2	Valve (Mk 2 pump only)
4	Screw 3/8"
4	Screw 1/2"
2	Bridge piece
1	Diaphragm
1	Buffer
2	Valve (Mk 3 pump only)
1	Gasket (Mk 3 pump only)

**AS3719 Bushed Eyebolt & Clamping Plate Assembly**

Qty	Containing
2	Clamping plate
1	Nut
1	Fulcrum bush
1	Eyebolt
1	Buffer
1	Label

**AS3780 Fork Assembly**

Qty	Containing
1	Fork
1	Insert fork
2	Bolt
2	Fulcrum sleeve
2	Nut
4	Washer
2	Fulcrum bush

Service kits and images continue on the next page  
See page 60 for further contact information

**On Deck/Bulkhead: BP3708, Thru Deck/Bulkhead: BP3740 -**

### Diecast Alloy Bilge Pump



AK3706



AK3714



AS3719



AS3723



AS3725



AS3780



AS4405



DP3804



DP8904



SB4222



SB5865



SF5425

**Note:** Cast body and mounting bracket are not available as service parts.

### Service Kits (Continued)

#### AS3723 Outlet Valve Plate Assembly (Mk 3 only)

Qty	Containing
2	Screw
4	Screw
1	Bridge piece
1	Valve (Mk 3 Pump)
1	Valve plate
1	Gasket

#### AS3725 Gaiter Kit for Deckplates

Qty	Containing
1	Gaiter (for metal or plastic deckplate)
1	O-ring (for metal deckplate)

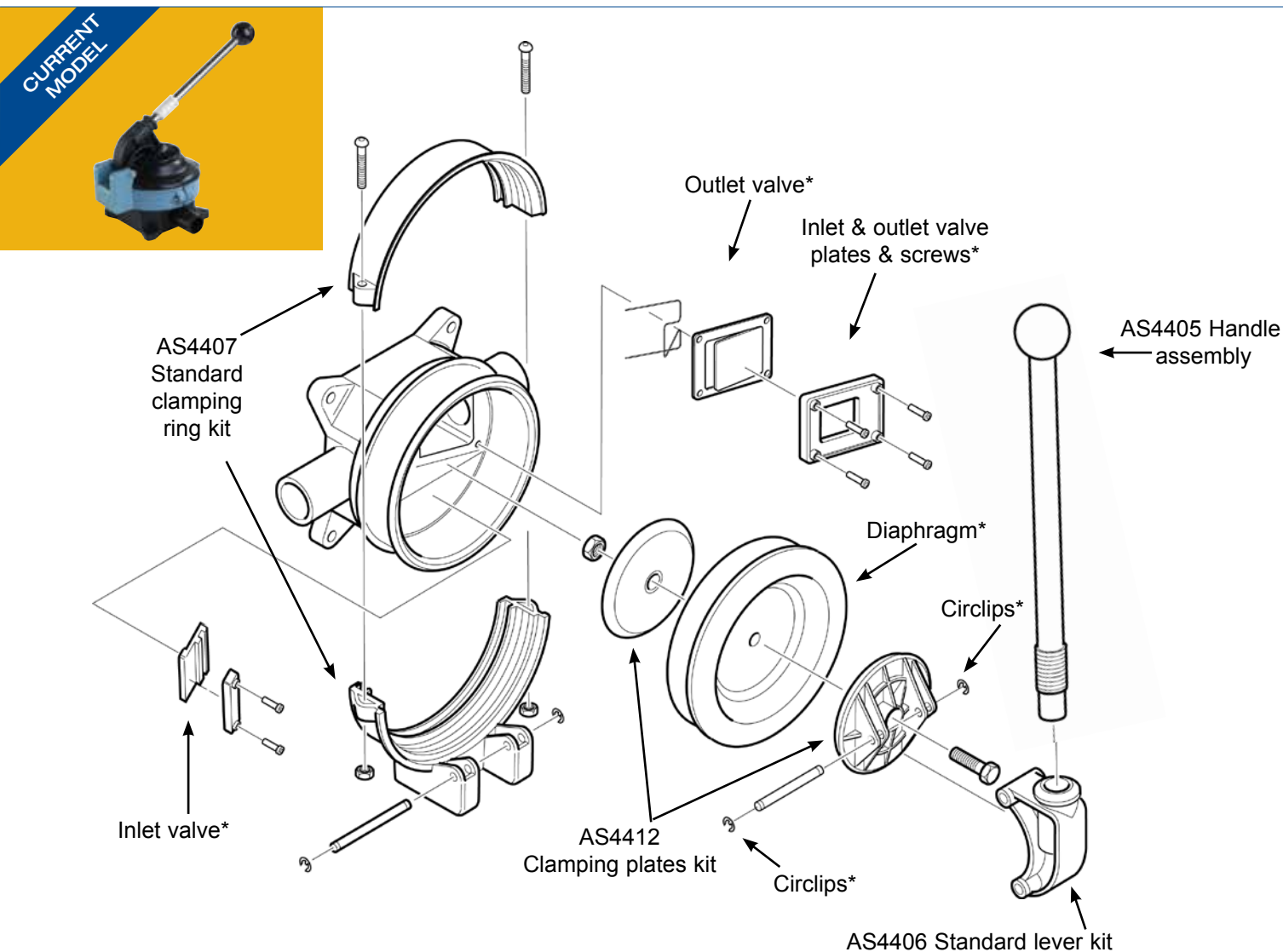


## Manual Bilge Pumps

### Gusher® Titan Standard

#### On Deck/Bulkhead: BP4402 - Powerful Lightweight Bilge and Waste Pump

**Note\*** Contained in Service Kit AK4400 (Neoprene™) or AK4419 (Nitrile®)



13

#### Accessories

AS4405 Spare Handle	1
SB4222 Side Entry Strainer	1
SB5865 Top Entry Strainer	1
SF5425 1 1/2" Skin Fitting	1
LV1215 1" / 1 1/2" Non-return Valve	1
EB3488 1 1/2" Elbow	1

#### Service Kits (for On Deck/ Bulkhead Model BP4402)

#### AK4400 Service Kit with Complete Set of Serviceable Parts for Gusher® Titan (Neoprene™)

Qty	Containing
4	Circlip
6	Screw
1	Outlet valve spring

1	Clamping nut
1	Outlet valve plate
1	Inlet valve plate
1	Outlet valve
1	Inlet valve
1	Diaphragm

#### AK4419 Service Kit with Complete Set of Serviceable Parts for Gusher® Titan (Nitrile®)

Qty	Containing
4	Circlip
6	Screw
1	Outlet valve spring
1	Clamping nut
1	Outlet valve plate
1	Inlet valve plate
1	Outlet valve
1	Inlet valve
1	Diaphragm

#### AS4406 Standard Lever kit

Qty	Containing
4	Circlip
1	Standard operating lever
1	Lever fulcrum pin
1	Standard fulcrum pin

#### AS4407 Standard Clamping Ring Kit

Qty	Containing
2	Nut
2	Screw
1	Top clamping ring
1	Bottom clamping ring
4	Circlip

#### AS4412 Clamping Plates Kit

Qty	Containing	
1	Clamping bolt	1 Inner clamping plate
1	Clamping nut	4 Circlip
1	Outer clamping plate	

See page 60 for further contact information

Service kits and images continue on page 14





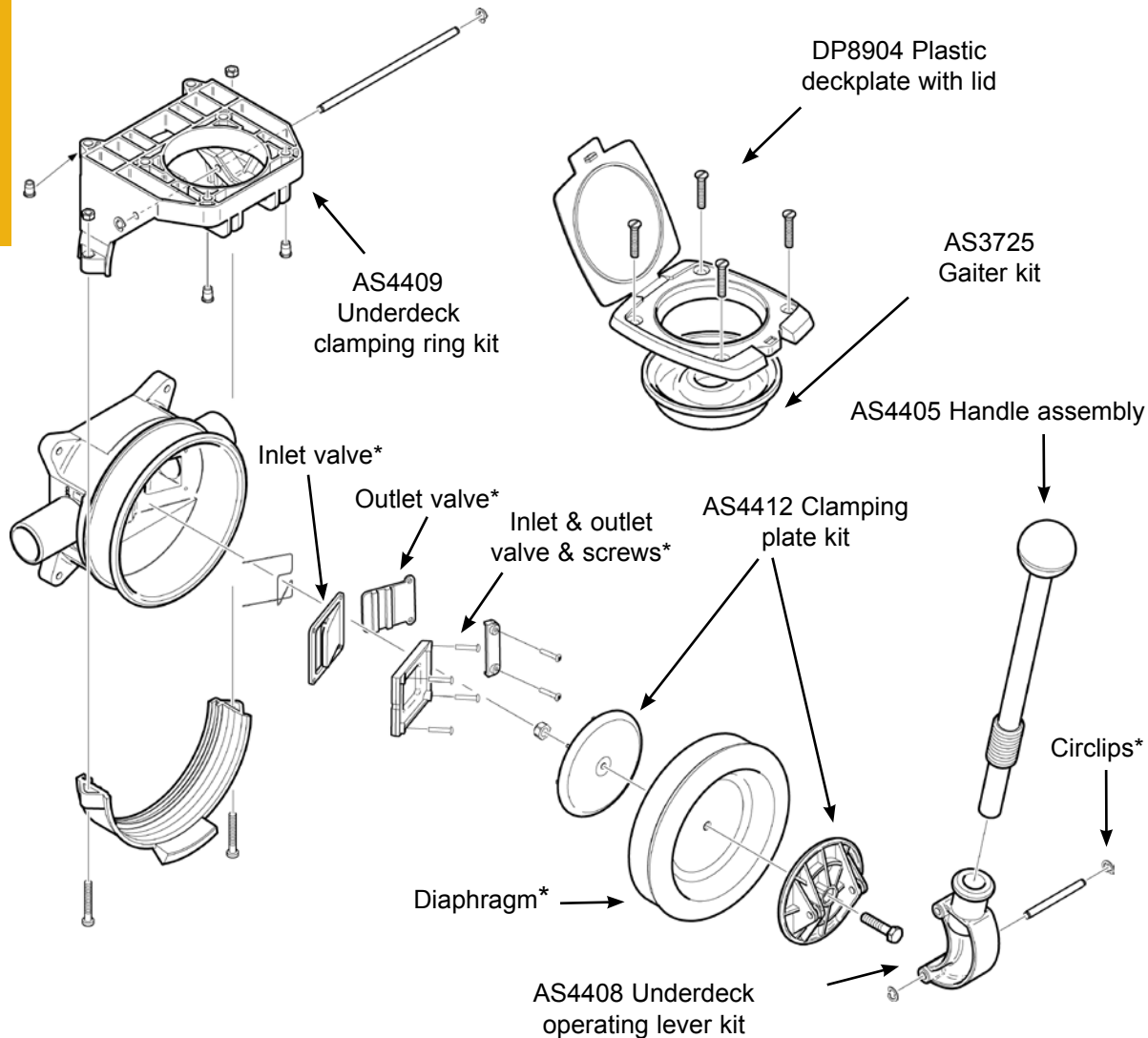
## Manual Bilge Pumps

### Gusher® Titan Underdeck

#### Underdeck: BP4410 - Powerful Lightweight Bilge and Waste Pump

**Note\*** Contained in Service Kit AK4400 (Neoprene™) or AK4419 (Nitrile®)

CURRENT  
MODEL



14

#### Accessories

DP8904 Plastic Deckplate Kit

AS4405 Spare Handle

SB4222 Side Entry Strainer

SB5865 Top Entry Strainer

SF5425 1 1/2" Skin Fitting

LV1215 1" / 1 1/2" Non Return Valve

EB3488 1 1/2" Elbow

#### Service Kits

(for Underdeck Model BP4410)

**AK4400 Service Kit with Complete Set of Parts for Gusher® Titan (Neoprene™)**  
(See list below)

**AK4419 Service Kit with Complete Set of Parts for Gusher® Titan (Nitrile®)**

Qty	Containing
4	Circlip
6	Screw
1	Outlet valve spring
1	Clamping nut
1	Outlet valve plate
1	Inlet valve plate
1	Outlet valve
1	Inlet valve
1	Diaphragm

**AS4408 Underdeck Operating Lever Kit**

Qty	Containing
4	Circlip
1	U/D operating lever
1	U/D fulcrum pin
1	Lever fulcrum pin

**AS3725 Gaiter Kit for Deckplates**

Qty	Containing
1	Gaiter (for plastic or metal deckplate)
1	O-ring (for metal deckplate Whale Gusher® 10 & Whale Gusher® 30 only)

See page 60 for further contact information

### On Deck/Bulkhead: BP4402

### Underdeck: BP4410



AK4400



AK4419



AS3725



AS4405



AS4406 for BP4402



AS4407 for BP4402



AS4408 for BP4410



AS4409 for BP4410



AS4412



DP8904



SB4222 / SB5865



SF5425

### Service Kits (Continued)

#### DP8904 Plastic Deckplate with Lid

Qty	Containing
1	Deckplate & lid
1	Gaiter
6	Screws M6x40
6	Nuts M6
6	Washers M6

#### AS4412 Clamping Plate Kit

Qty	Containing
1	Clamping bolt
1	Clamping nut
1	Outer clamping plate
1	Inner clamping plate
4	Circlip

#### AS4409 Underdeck Clamping Ring Kit

Qty	Containing
2	Nut
4	Circlip
4	Inserts for U/D clamping ring
2	Screw
1	U/D clamping ring
1	Top clamping ring





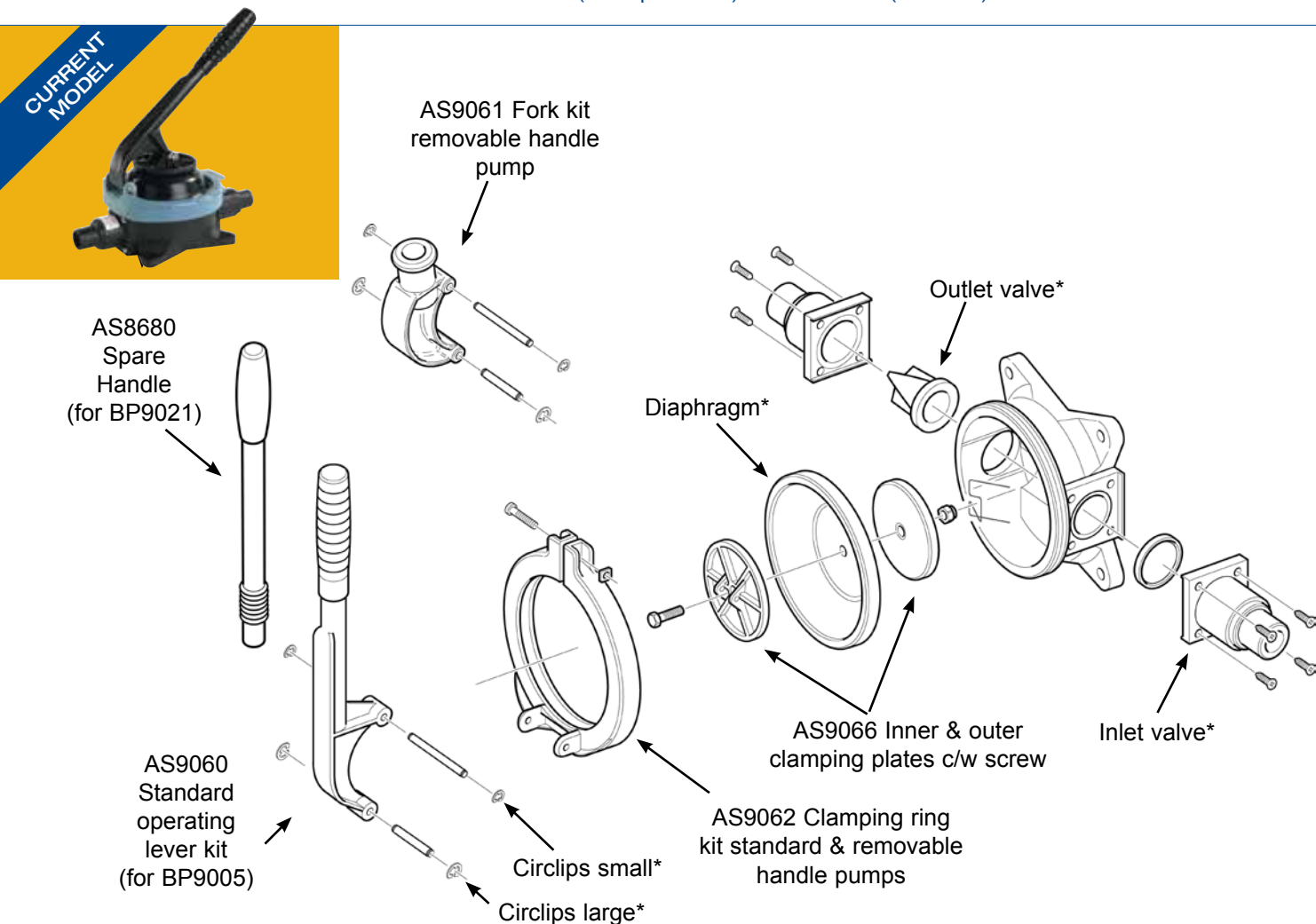
## Manual Bilge Pumps

### Gusher® Urchin Compact Bilge and Waste Pump

**On Deck/Bulkhead: BP9005 - Fixed Handle Compact Bilge & Waste Pump**

**On Deck/Bulkhead: BP9021 - Removable Handle Compact Bilge & Waste Pump**

**Note\*** Contained in Service Kit AK9003 (Neoprene™) or AK9011 (Nitrile®)



16

#### Accessories

AS8680 Spare Handle (for BP9021 only)

SB4222 Side Entry Strainer

SB5865 Top Entry Strainer

SF5204 1" Skin Fitting

SF5425 1 1/2" Skin Fitting

YP6114 1 1/2" Y Piece

YP6130 1/2" Y Piece

LV1215 1" / 1 1/2" Non Return Valve

LV1219 3/4" / 1" Non Return Valve

EB3364 1" Elbow

EB3488 1 1/2" Elbow

#### Service Kits

AK9003 Service Kit with Complete Set of Serviceable Parts for Urchin (Neoprene™)

AK9011 Service Kit with Complete Set of Serviceable Parts for Urchin (Nitrile®)

Qty	Containing
1	Diaphragm
1	Inlet valve
1	Outlet valve
2	Circlip small
2	Circlip large

AS9060 Standard Operating Lever Kit

Qty	Containing
1	Lever sleeve (black)
1	Lever
1	Short fulcrum pin
2	Circlip large

2	Circlip small
1	Fulcrum pin

AS9061 Fork Assembly for Underdeck & Removable Handle Pumps

Qty	Containing
1	Short fulcrum pin
1	Fork
2	Circlip small
2	Circlip large
1	Long fulcrum pin (underdeck)
1	Fulcrum pin (removable handle)

AS9062 Clamping Ring Kit for Standard & Removable Handle Pumps

Qty	Containing
1	Clamping ring
1	Pinching screw
1	Nut
2	Circlip small
2	Circlip large

Service kits and images continue on next page

See page 60 for further contact information



## Manual Bilge Pumps

### Gusher® Urchin Compact Bilge and Waste Pump

**On Deck/Bulkhead: BP9005 - Fixed Handle Compact Bilge & Waste Pump**

**On Deck/Bulkhead: BP9021 - Removable Handle Compact Bilge & Waste Pump**



AK9003



AK9011



AS9060 - BP9005



AS9061 - BP9021



AS9062



AS8680 for BP9021 only



AS9066



SB4222 / SB5865



SF5204/SF5425



EB3363/EB3488



YP6114



LV1215

## Service Kits (Continued)

### AS9066 Inner & Outer Clamping Plate Kit

Qty	Containing
1	Clamping nut nylon
1	Inner clamping plate
1	Outer clamping plate
1	Clamping screw
2	Circlip small
2	Circlip large



## Manual Bilge Pumps

### Gusher® Urchin Underdeck

#### Underdeck: BP9013 - Compact Bilge & Waste Water Transfer Pump

**Note\*** Contained in Service Kit AK9003 (Neoprene™) or AK9011 (Nitrile®)

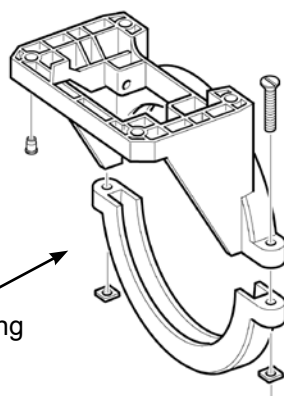
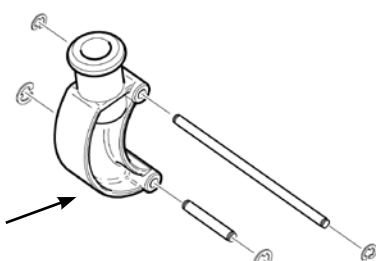


AS8680  
Spare Handle

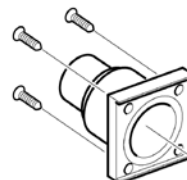
AS9081  
Fork assembly  
for underdeck  
pumps

Circlips large\*

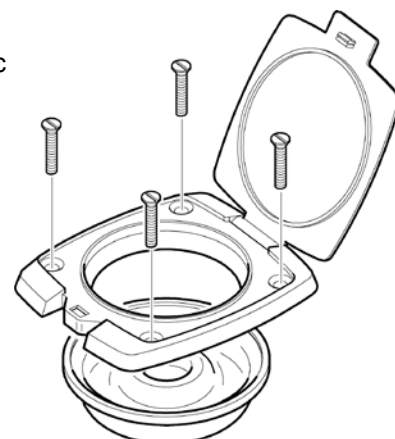
AS9064  
Underdeck clamping  
ring kit



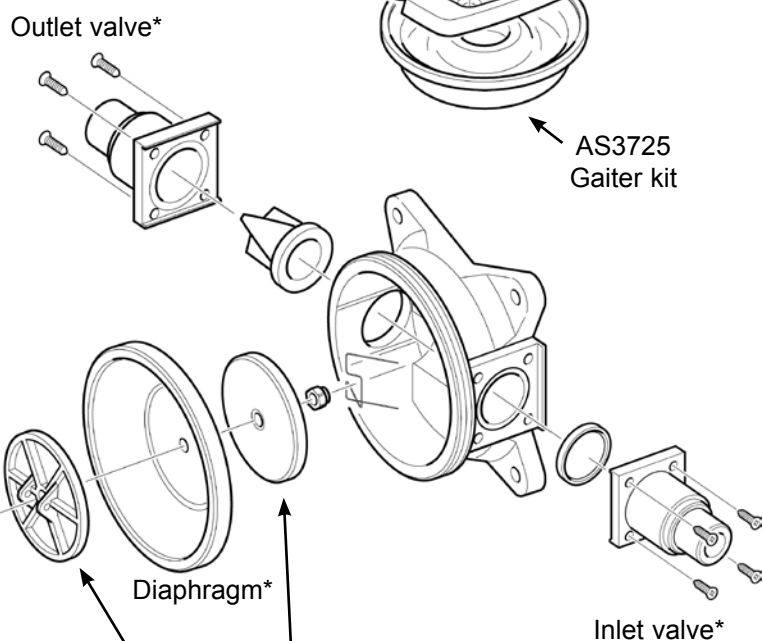
Outlet valve\*



DP8904 Plastic  
deckplate  
kit with lid



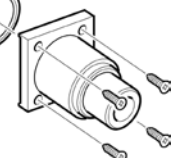
AS3725  
Gaiter kit



Diaphragm\*

AS9066 Inner & outer  
clamping plates c/w screw

Inlet valve\*



#### Accessories

AS8680 Spare Handle

SB4222 Side Entry Strainer

SB5865 Top Entry Strainer

SF5204 1" Skin Fitting

SF5425 1 1/2" Skin Fitting

YP6114 1 1/2" Y Piece

LV1215 1" / 1 1/2" Non Return Valve

EB3364 1" Elbow

EB3488 1 1/2" Elbow

#### Service Kits

**AK9003 Service Kit with Complete Set of Parts for Gusher® Urchin (Neoprene™) (See list below)**

**AK9011 Service Kit with Complete Set of Parts for Gusher® Urchin (Nitrile®)**

Qty	Containing
1	Diaphragm
1	Inlet valve
1	Outlet valve
2	Circlip small
2	Circlip large

#### AS9064 Underdeck Clamping Ring Kit

Qty	Containing
1	U/D clamping ring
1	Pinching screw
4	Insert
1	Nut
4	Circlip

#### AS3725 Gaiter Kit for Deckplates

Qty	Containing
1	Gaiter (for plastic or metal deckplate)
1	O-ring (for metal deckplate Whale Gusher® 10 & Whale Gusher® 30 only)

### Underdeck: BP9013 - Compact Bilge & Waste Water Transfer Pump



AK9003



AK9011



AS3725



AS8680



AS9061



AS9064



AS9066



DP8904



SB4222



SB5865



SF5204



SF5425



YP6114



LV1215



EB3364/EB3488

### Service Kits (Continued)

#### AS9066 Inner & Outer Clamping Plate Kit

Qty	Containing
1	Clamping nut nyloc
1	Inner clamping plate
1	Outer clamping plate
1	Clamping screw
2	Circlip (small)
2	Circlip (large)

#### DP8904 Plastic Deckplate with Lid

Qty	Containing
1	Deckplate & lid
1	Gaiter
6	Screws M6x40
6	Nuts M6
6	Washers M6

#### AS9061 Fork Assembly

Qty	Containing
1	Short fulcrum pin
1	Fork
2	Circlip large
2	Circlip small
1	Long fulcrum pin (underdeck)
1	Fulcrum pin (removable handle)



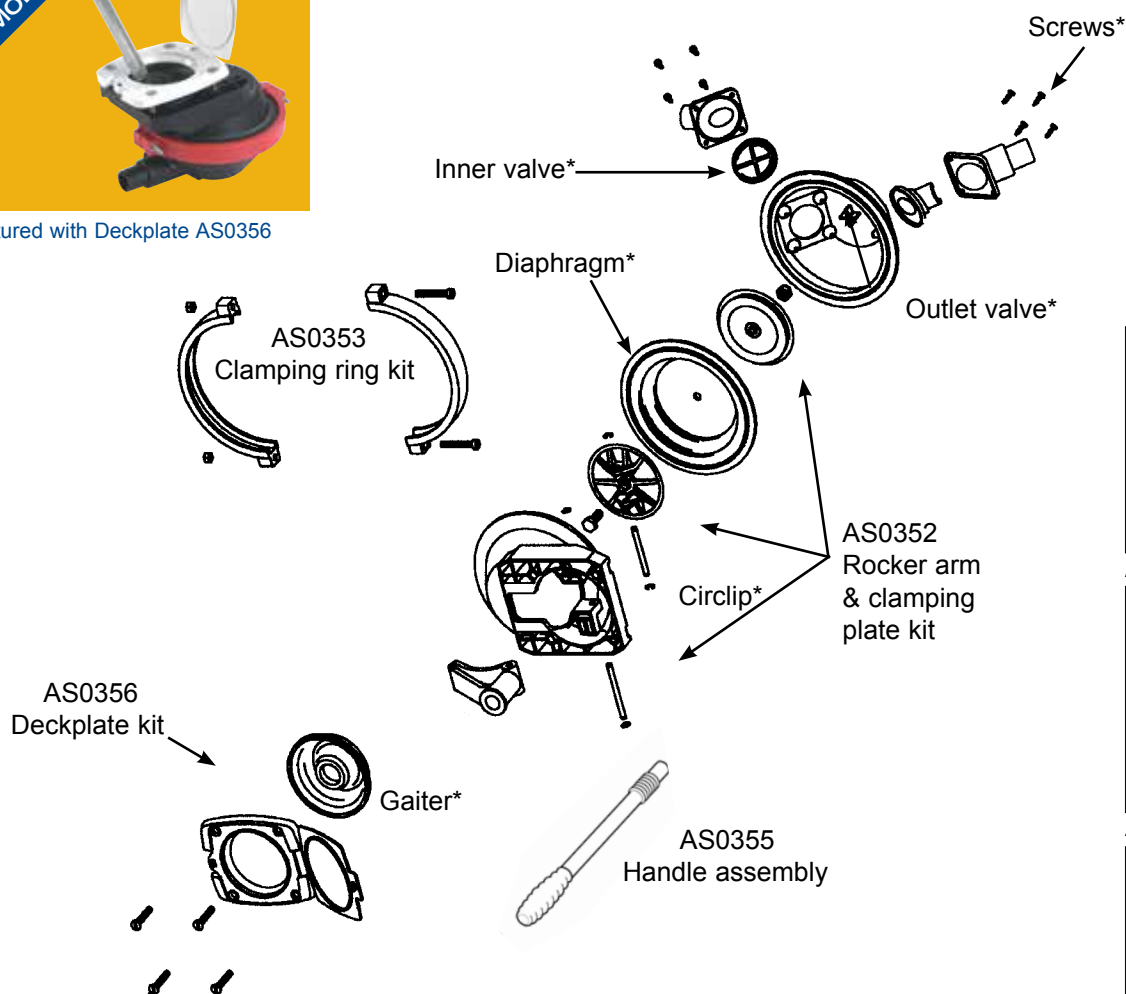
## Manual Bilge Pumps

### Whale Compac 50

#### Thru Deck Bulkhead Pump: BP0350 - Low Profile Underdeck Bilge Pump



Pictured with Deckplate AS0356



**Note:** Same Service Kits apply to Compac 50 Henderson model



AK8035



AS0352



AS0353



AS0355



AS0356

#### Accessories

##### AS0355 Spare Handle

Qty	Containing
1	Handle
1	Grip

##### AS0353 Clamping Ring Kit

Qty	Containing
2	Clamping ring
2	Nut M6
2	Screw M6x40

##### AS0356 Deckplate kit

Qty	Containing
1	Gaiter
1	Deckplate
1	Cover for deckplate
4	Screw M6x30
4	Nut insert M6

##### EB3364 1" Elbow

##### LV1215 1" / 1 1/2" Non Return Valve

#### Service Kits

##### AK8035 Service Kit with Complete Set of Serviceable Parts for Compac 50

Qty	Containing
1	Inlet valve
1	Outlet valve
1	Gaiter (deckplate)
4	Screw No 6 x 1/2" (port)
4	Circlip
1	Diaphragm (Nitrile®)

##### AS0352 Rocker Arm & Clamping Plate Kit

Qty	Containing
1	Rocker arm
1	Inner clamping plate
1	Outer clamping plate
1	Fulcrum pin (short)
1	Fulcrum pin (long)
4	Circlip
1	Nut nyloc M8
1	Screw M8x20

See page 60 for further contact information





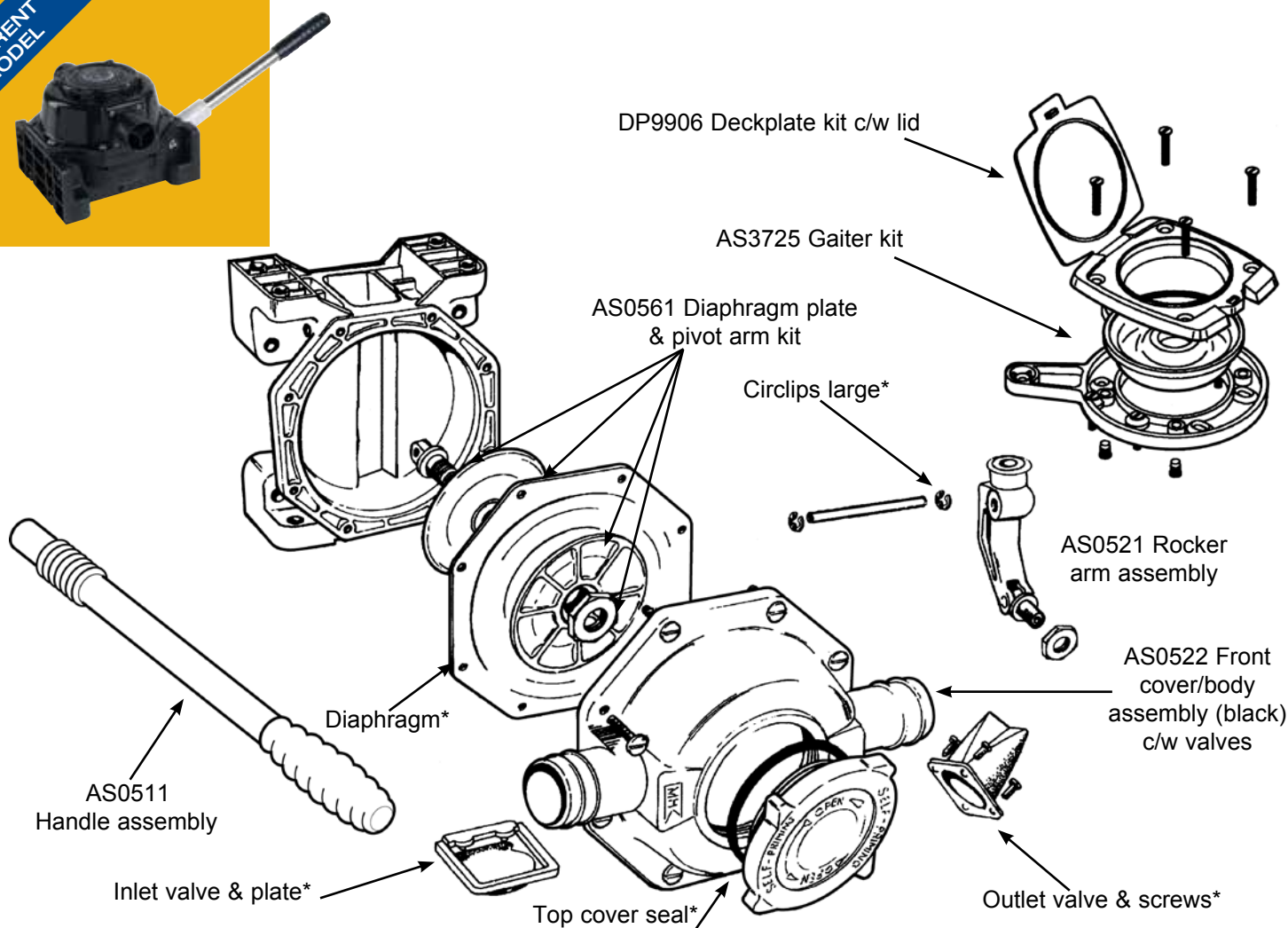
## Manual Bilge Pumps

### Mk 5 Universal Pump

#### BP0510/MH0510\*\* - Bilge and Waste Water Transfer Pump

**Note\*** Contained in Service Kit AK8050. **Note\*\*** MH0510 is now discontinued

CURRENT  
MODEL



**Note:** Same Service Kits apply to Mk 5 Universal Henderson model

21

#### Accessories

**DP9906 Deckplate Kit** (includes cover)

**AS0511 Spare Handle**

**AS3725 Gaiter Kit for Deckplates**

Qty	Containing
1	Gaiter (for plastic or metal deckplates)
1	O-ring (for metal deckplate G10 & G30 only)

**YP6114 1 1/2" Y Piece**

**EB33488 1 1/2" Elbow**

**LV1215 1" / 1 1/2" Non Return Valve**

**SF5425 1 1/2" Skin Fitting**

#### Service Kits

**AK8050 Service Kit with Complete Set of Serviceable Parts for Mk 5 Universal Pump**

Qty	Containing
1	Inlet valve plate
1	Inlet valve
2	Valve screw long
1	Top cover seal
1	Diaphragm
1	Outlet valve
2	Valve screw long
2	Circlip large
2	Circlip small
8	Screw M5x25
8	Nut M5



DP9906



AK8050



AS0511



AS0521

See page 60 for further contact information

Service kits and images continue on the next page

### BP0510/MH0510\*\* - Bilge and Waste Water Transfer Pump

**Note\*\*** MH0510 is now discontinued



AS0561



AS0522



AS3725



EB3488



LV1215



SF5425



YP6114

### Service Kits (Continued)

#### AS0521 Rocker Arm Assembly

Qty	Containing
1	Rocker arm
1	Pivot arm
1	Rocker arm nut
1	Pivot pin
1	Hinge pin
2	Circlip large
2	Circlip small

#### AS0561 Diaphragm Plate & Pivot Arm Kit

Qty	Containing
1	Pivot arm
2	Diaphragm plate
1	Rocker arm nut
2	Circlip small

#### AS0522 Front Cover/ Body Assembly (black) c/w Valves

Qty	Containing
1	Top cover
1	Front cover/body (black)
1	Inlet valve plate
1	Inlet valve
2	Valve screw short
1	Top cover seal
8	Assembly screw
1	Outlet valve
2	Valve screw long



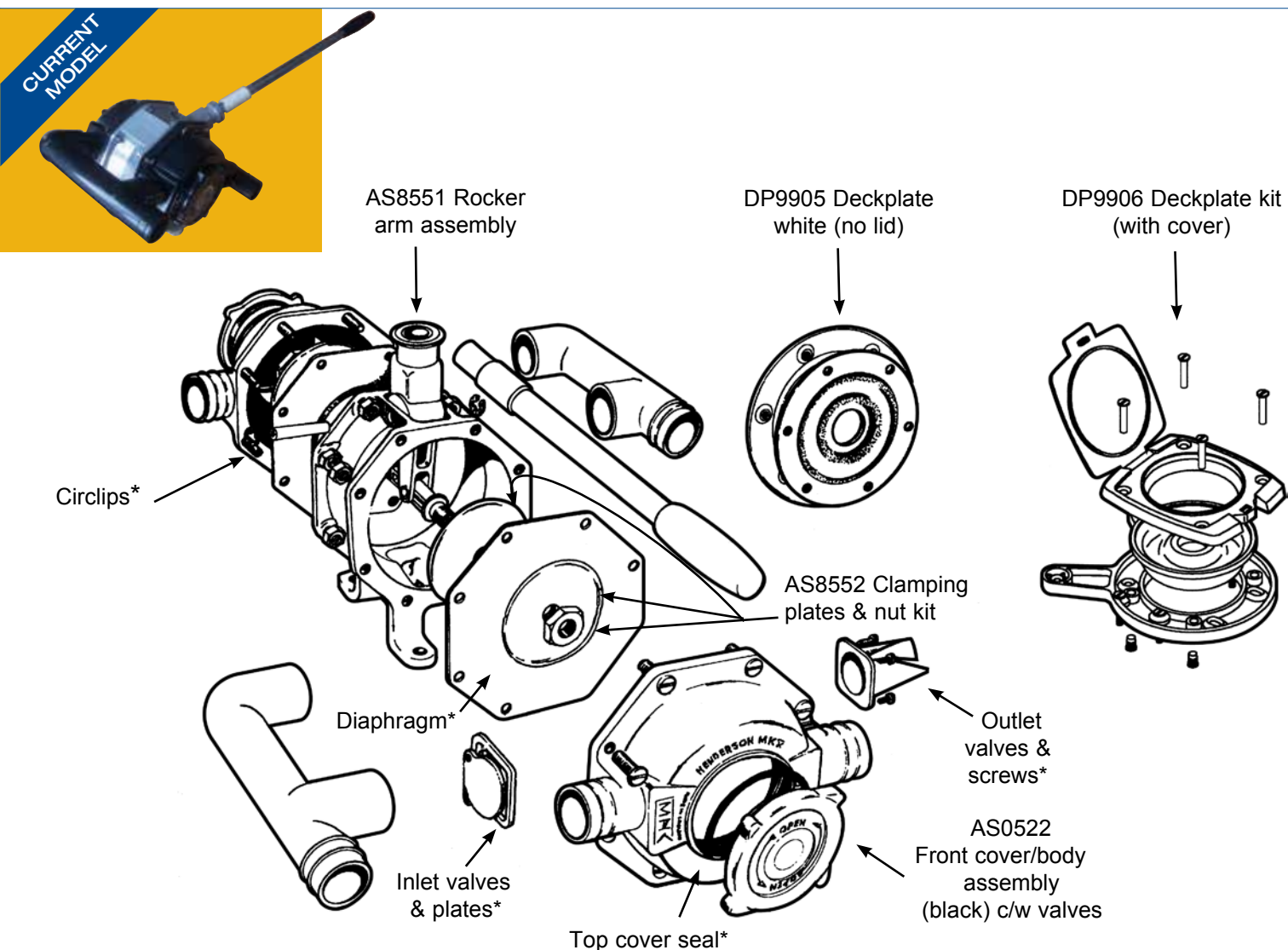


## Manual Bilge Pumps

### Mk 5 Double Action Pump

**Bulkhead: MH5550, Underdeck: MH5560, On Deck: MH5570**

**Note\*** Contained in Service Kit AK8060



23

#### Accessories

##### DP9905 Deckplate White (no lid)

Qty	Containing
1	Deckring white
1	Deckseal (with 6 holes)
4	Screws
4	Nuts
4	Screws M6x40
2	Screws M6x40 CH

##### DP9906 Deckplate Kit (includes cover)

YP6114 1 1/2" Y Piece

EB3488 1 1/2" Elbow

LV1215 1" / 1 1/2" Non Return Valve

SF5425 1 1/2" Skin Fitting

#### Service Kits

##### AK8060 Service Kit with Complete Set of Serviceable Parts for Mk V Double Acting

Qty	Containing
2	Inlet valve plate
2	Inlet valve
4	Valve screw short
2	Top cover seal
2	Diaphragm
2	Outlet valve
4	Valve screw long
2	Circlip large
4	Circlip small



AK8060



AS0522

See page 60 for further contact information

Service kits and images continue on the next page

**Bulkhead: MH5550, Underdeck: MH5560, On Deck: MH5570**



AS8552



AS8551



DP9905



DP9906



EB3488



LV1215



SF5425



YP6114

### Service Kits (Continued)

#### AS0522 Front Cover/ Body Assembly (black) c/w Valves

Qty	Containing
1	Top cover
1	Front cover/body (black)
1	Inlet valve plate
1	Inlet valve
2	Valve screw short
1	Top cover seal
8	Assembly screw
1	Outlet valve
2	Valve screw long

#### AS8551 Rocket Arm Assembly

Qty	Containing
2	Pivot bush
1	Pivot arm
1	Rocker arm
1	Fulcrum sleeve
1	Fulcrum bush
2	Nut diaphragm
1	Hinge pin
1	Bolt M6x50
1	Nut nyloc M6
1	Fork insert
2	Circlip (large)
2	Circlip (small)

#### AS8552 Clamping Plates & Nut Kit

Qty	Containing
4	Clamping plates (alloy)
2	Rocker arm nuts

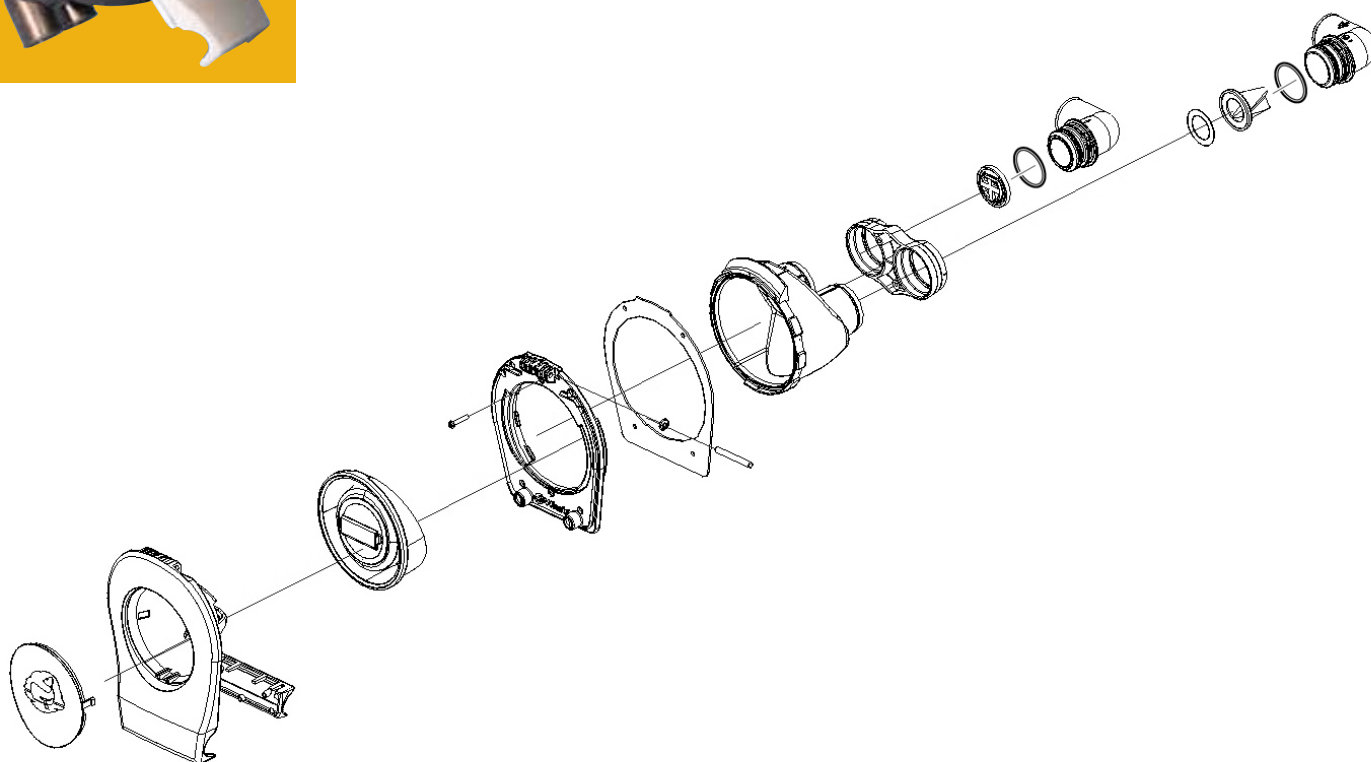


## Manual Bilge Pump

### Smartbail

#### BP5012, BP5010B, BP5021B - Compact Manual Bilge Pump Fast Installation

**Note\*** Contained in Service Kit AK5010



### Service Kits

#### AK5010 Serviceable Parts Kit for Smartbail

Qty	Containing
1	Inlet valve (Nitrile®)
1	Outlet valve (Nitrile®)
1	Overmould diaphragm (Santoprene®)
1	Pivot pin
1	Flat seal
1	Screw 4 mm x 20 mm
1	Washer starlock M5 S/Steel
2	O-ring



AK5010

## Electric and Manual Freshwater Pumps



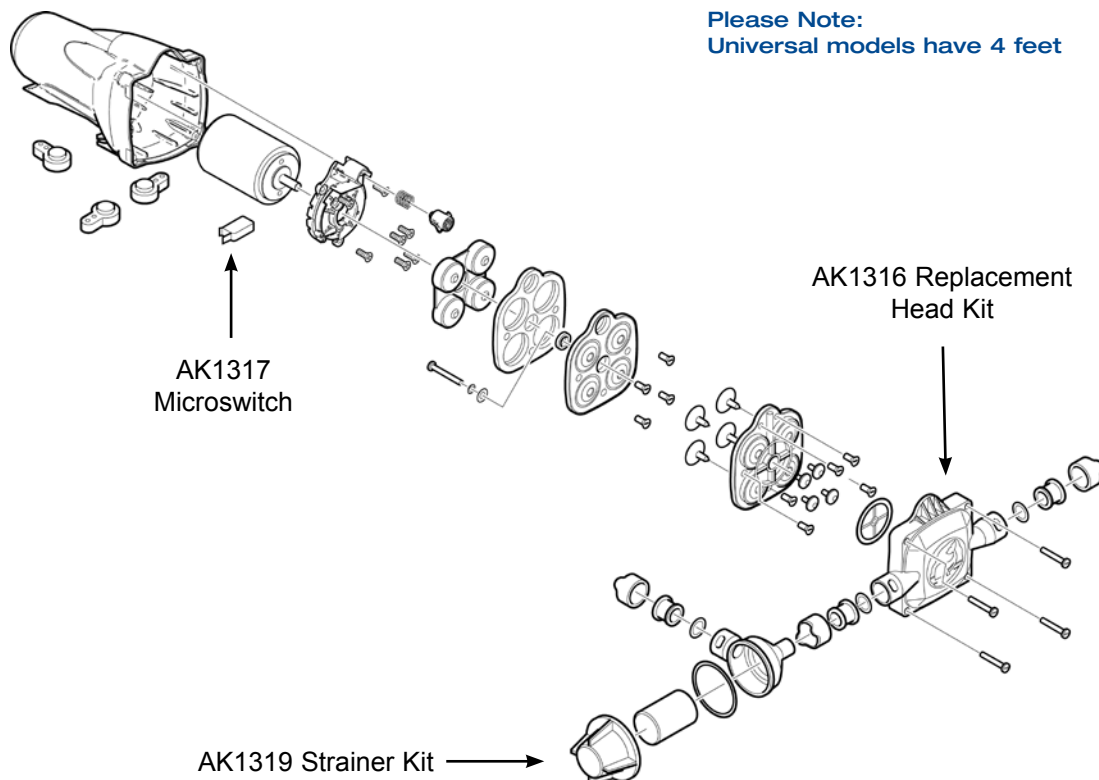
### Watermaster - Automatic Pressure Pump Range

### Universal - Washdown Pressure Pump

FW0814, FW1214, FW1215, FW1225

UF1815, UF2014, UF2015, UF8015, UF8025 Introduced 2005.

CURRENT  
MODEL



Please Note:  
Universal models have 4 feet

Note: UF models replaced UP codes. UF models come with Quick Connect 15mm heads. This head can be retrofitted to UP models using Service Kit AK1316.  
The 8ltr and 12ltr Universal Pressure Pump models (UF0812, UF0814, UF1212, UF1214, UF1215, UF1225) have been directly replaced with the Watermaster Pressure Pump Range (FW0814, FW1214, FW1215, FW1225).

### Service Kits

#### AK1316 Service Kit for Pump Head

**Qty** 1 **Containing**  
Replacement head (includes front cover).  
Also retrofits to obsolete UP or UF style Universals, or  
WD Washdown kits



AK1316

#### AK1317 Universal Microswitch Kit

**Qty** 1 **Containing**  
Microswitch



AK1317

#### AK1319 Replacement Strainer

**Qty** 1 **Containing**  
Strainer



AK1319

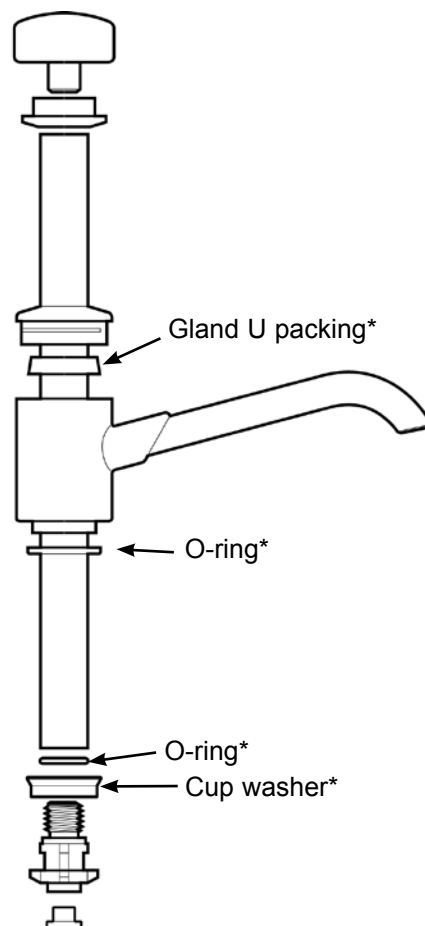
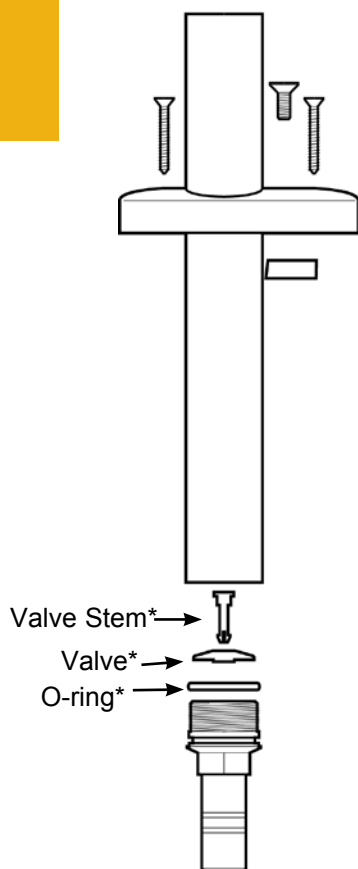


# Manual Galley Pump - Hand Operated

## V-Pump Mk 6

### V-Pump Mk 6 GP0650 - Vertical Self-Priming Hand Pump

**Note\*** Contained in Service Kit AK0618



### Service Kits

#### AK0618 Serviceable Parts Kit for V-Pump

Qty	Containing
1	Cup packing
1	Buffer
1	Valve
1	Valve stem
1	O-ring (plunger cup seat)
1	Grand U packing
1	O-ring (base)
1	O-ring (head)



AK0618

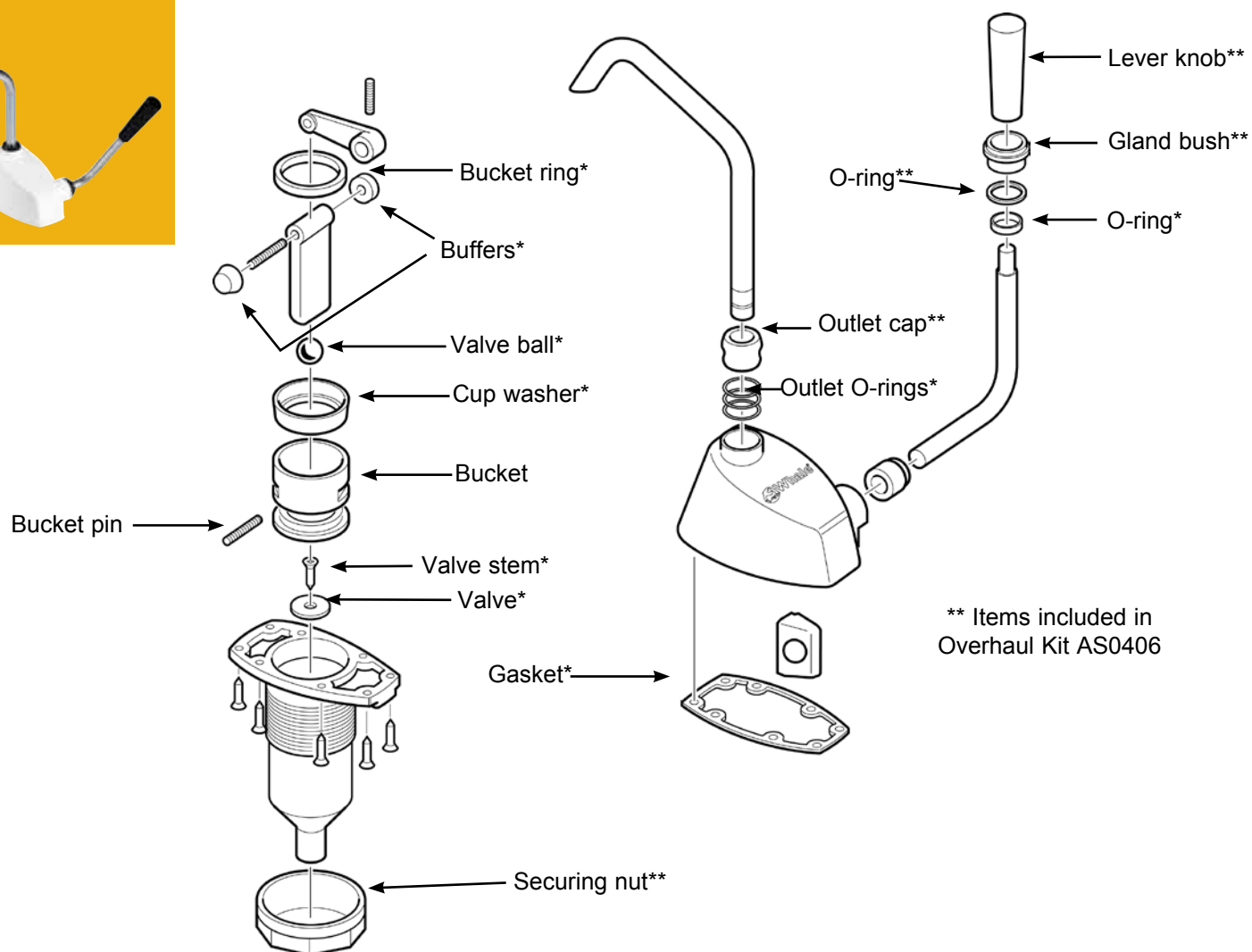


# Manual Galley Pump - Hand Operated

## Flipper Mk 3 & 4

### Flipper Pump GP0418 - Self-Priming Lever Operated Hand Pump

**Note\*** Contained in Service Kit AK0405



Flipper Mk 3 discontinued and replaced by Mk 4. Mk 1 and 2 service kits are not available

29

### Service Kits

#### AK0405 With Complete Set of Serviceable Parts for Flipper Mk 3 & Mk 4

Qty	Containing
3	O-ring (3 per outlet)
1	Gasket
1	Bucket ring
1	Cup washer
1	Valve ball
2	Buffer
1	O-ring
1	O-ring (gland bush)
1	Valve stem
1	Valve

#### AS0406 Flipper Overhaul Kit

Qty	Containing
1	Outlet cap
1	Gland bush
1	Securing nut
1	Cover knob
1	O-ring



AK0405



AS0406

See page 60 for further contact information

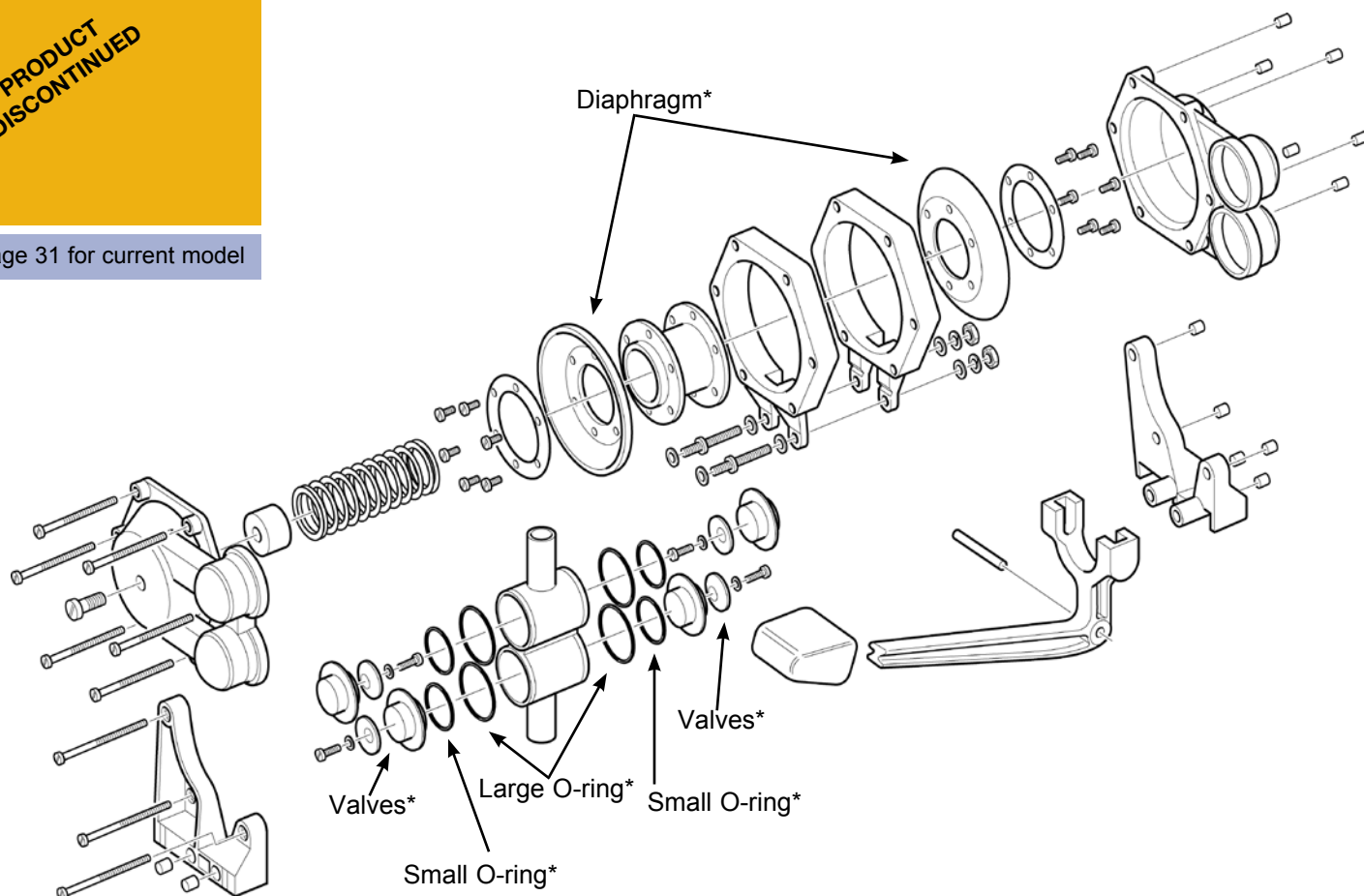


### Gusher® Galley Mk 2 - discontinued in 1984

**Note\*** Contained in Service Kit AK0502

PRODUCT  
DISCONTINUED

See page 31 for current model



Pump replaced in 1984 by Gusher® Galley Mk 3 (see page 32). Mk 1 stock is not available

### Service Kits

**AK0502 Service Kit with Complete Set of Serviceable Parts for Whale Gusher® Galley Mk 2**

Qty	Containing
4	Small O-ring
4	Valve
4	Large O-ring
2	Diaphragm

**Note:** This product is now out of production and has been replaced by Whale Gusher® Galley Mk 3 Pump. (See Page 32). No other service kits are available for this pump.

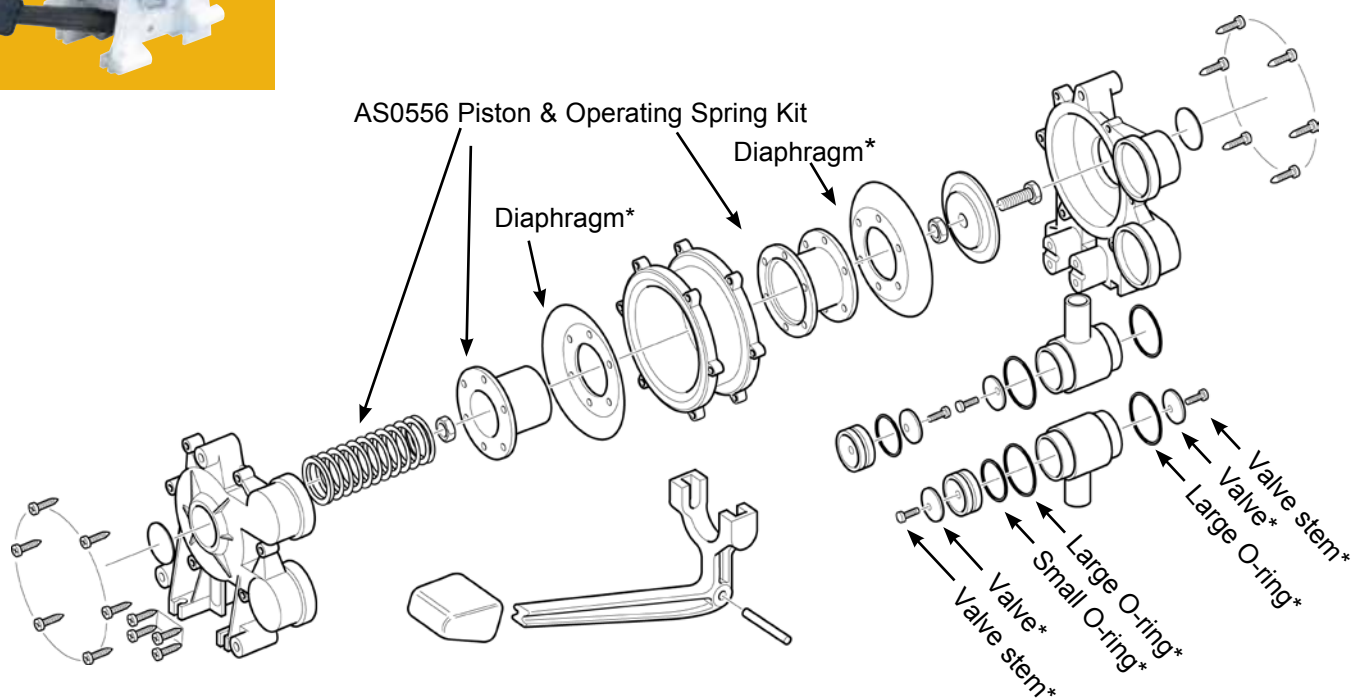
For further details of our current product range, please visit our web site [www.whalepumps.com](http://www.whalepumps.com)



AK0502

### Gusher® Galley Mk 3 Pump GP0550 (Right Hand Version) GP0551 (Left Hand Version) - Foot Operated Fresh Water Pump.

**Note\*** Contained in Service Kit AK0553 - Introduced 1984



#### Accessories

**WF1530 Silverised Carbon Water Filter (inline)**

#### Service Kits

**AK0553 Service Kit with Complete Set of Serviceable Parts for Whale Gusher® Galley Mk 3**

Qty	Containing
2	Small O-ring
4	Valve
4	Valve stem
4	Large O-ring
4	Self tapping screw
1	Sealing washer
2	Diaphragm

#### AS0556 Piston & Operating Spring Kit

Qty	Containing
1	Nut M6
1	Operating spring
1	Clamping cup
1	Piston
1	Clamping plate
1	Sealing washer
1	Screw M6



WF1530



AK0553



AS0556



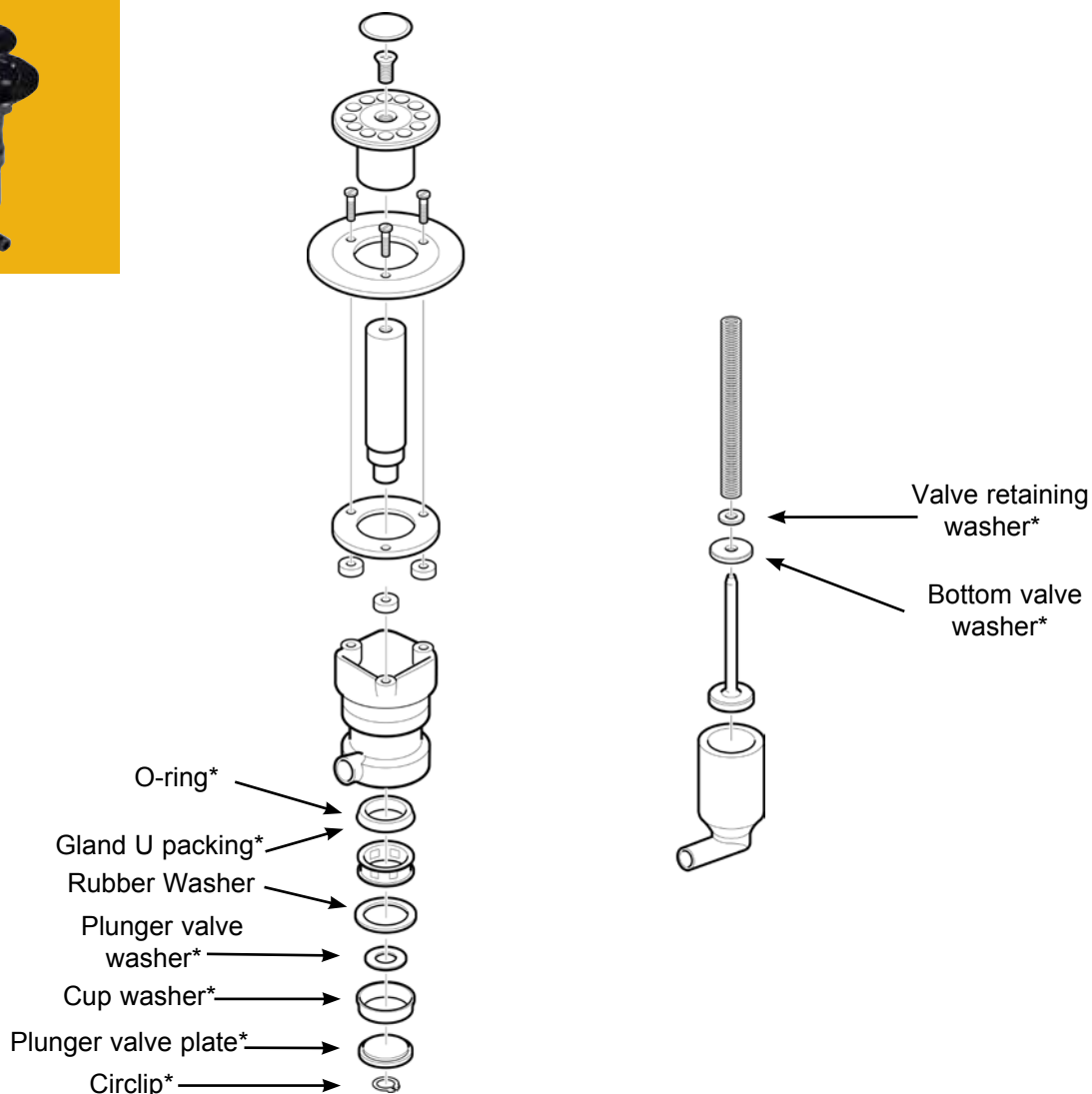
## Manual Galley Pump - Foot Operated

### Tiptoe Pump Mk 4

**Tiptoe Pump Mk 4 GP1309 - Self-Priming Fresh Water Pump. Introduced 1999.**

**Note\*** Contained in Service Kit AK1304

CURRENT  
MODEL



32

#### Accessories

WF1530 Silverised Carbon Water Filter (inline)

#### Service Kits

**AK1304 Service Kit with Complete Set of Serviceable Parts for Tiptoe Mk 3 or Mk 4**

Qty	Containing
1	Cup washer
1	Gland U packing
1	Bottom valve washer
1	Plunger valve washer
1	Plunger valve plate
1	Circlip
1	Valve retaining washer
1	O-ring
1	Rubber Washer



AK1304

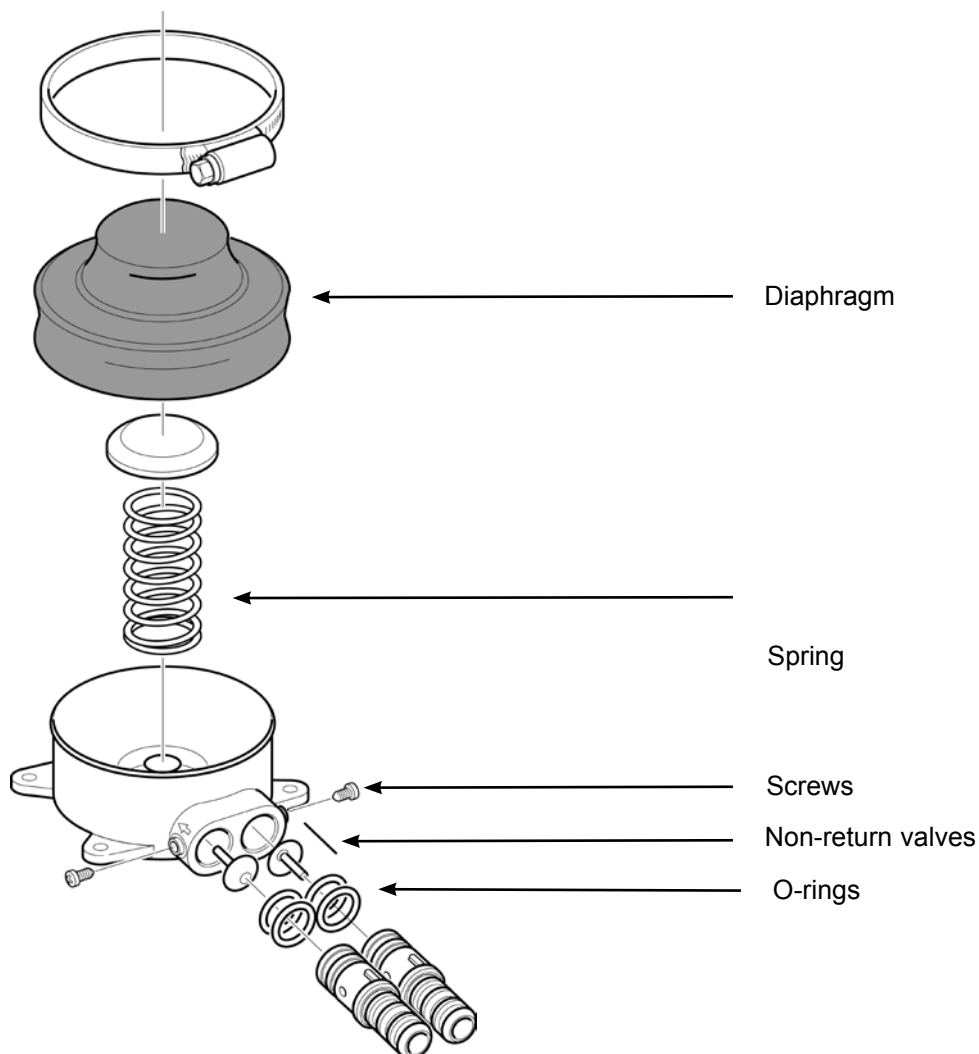


WF1530

See page 60 for further contact information

### Babyfoot Pump GP4618 - Self-Priming Compact Foot Pump

**Note\*** For product manufactured after July 2003



#### Accessories

WF1530 Silverised Carbon Water Filter (inline)

#### Service Kits

##### AK4615 Serviceable Parts Kit

Qty	Containing
1	Diaphragm neoprene
1	Spring
2	Screw
4	O-ring
2	Non return valve



AK4615



WF1530



## Faucets - Tough, Lightweight ABS Range

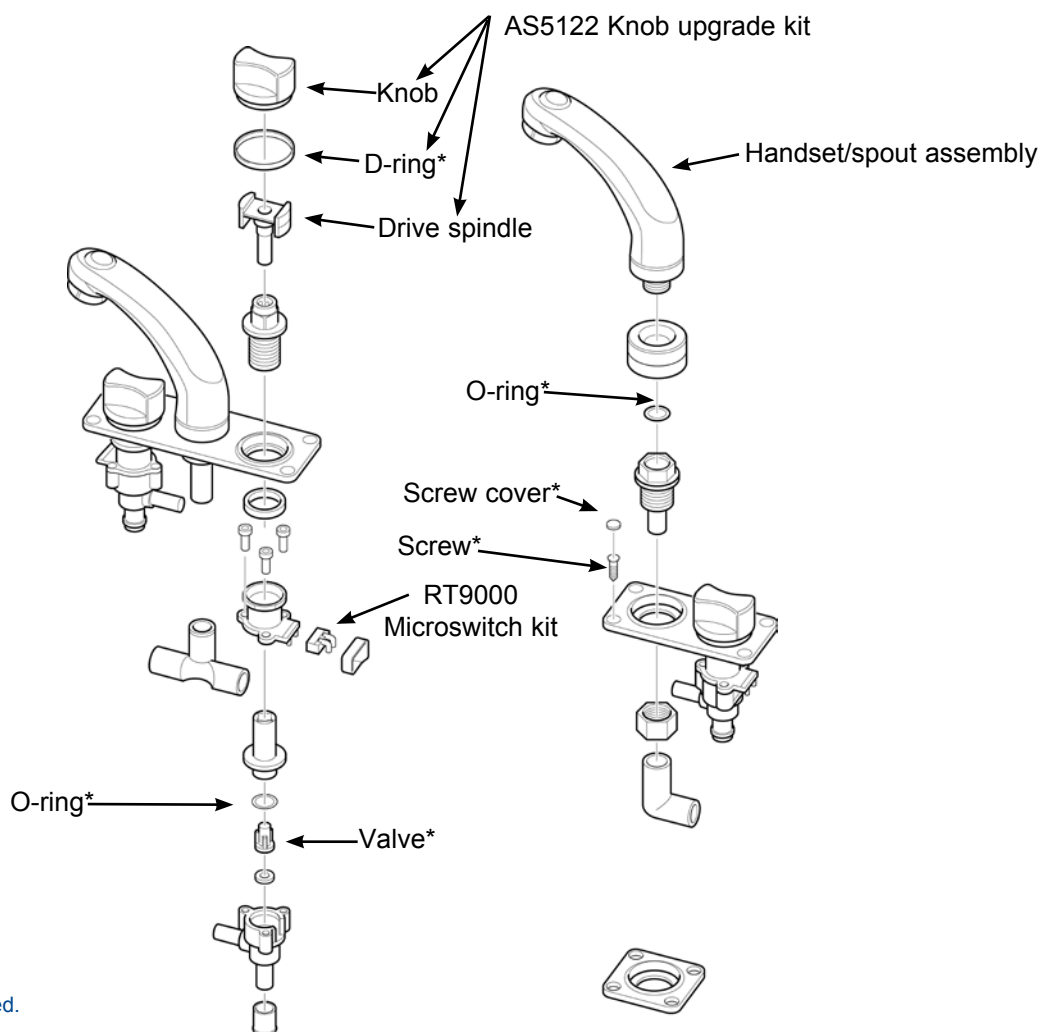
### Elegance Single & Mixer Faucets (11mm & 12mm Smooth Connections)

**Cold Only: RT1010, RT6010; Mixer: RT2010, RT2007, RT2035, RT7010, RT7007**

#### Swivel Faucet Models



**Note\*** Contained in Service Kit AK5030



**Note:** Long spout now discontinued.  
Replaced by AS5123.

34

#### Accessories

Also available separately

WF1230 Silverised Carbon Water Filter (inline)

RT9000 Microswitch Kit (2 switches)

Qty	Containing
2	Microswitches
2	Switch clips
4	Terminal connectors

#### Service Kits

**AK5030 Service Kit with Complete Set of Serviceable parts for Elegance Faucets, Showers & Swim 'N' Rinse**

Qty	Containing
5	O-ring (Combo showerhead & Tee pieces)
4	Screw No.6 csk
4	Screw No.6 pan head
2	O-ring (control unit)
2	Valve washer
1	O-ring (tap outlet)
4	Screw cover white
6	Large screw covers (Swim 'N' Rinse only)
4	Screw cover beige



AK5030



RT9000

Service kits continue on the next page. See page 60 for further contact information



## Faucets - Tough, Lightweight ABS Range

### Elegance Single & Mixer Faucets (11mm & 12mm Smooth Connections)

**Single: RT1010, RT6010 - Swivel Faucet Models**

**Mixer: RT2010, RT2007, RT2035, RT7010, RT7007**



AS5020



AS5122



AS5626



WF1230

#### Service Kits (Continued)

**AS5020 Replacement short spout c/w  
12mm male stem**

**AS5122 Control Knob Upgrade Kit White (Mk 2)**

Qty	Containing
2	Knobs
1	D-ring (blue)
1	D-ring (red)
2	Drive spindles

**AS5626 Control Knob Upgrade Kit Beige**

Qty	Containing
2	Knobs
1	D-ring (blue)
1	D-ring (red)
2	Drive spindles

For information on 1/2" threaded models see pages 36-40

See page 60 for further contact information



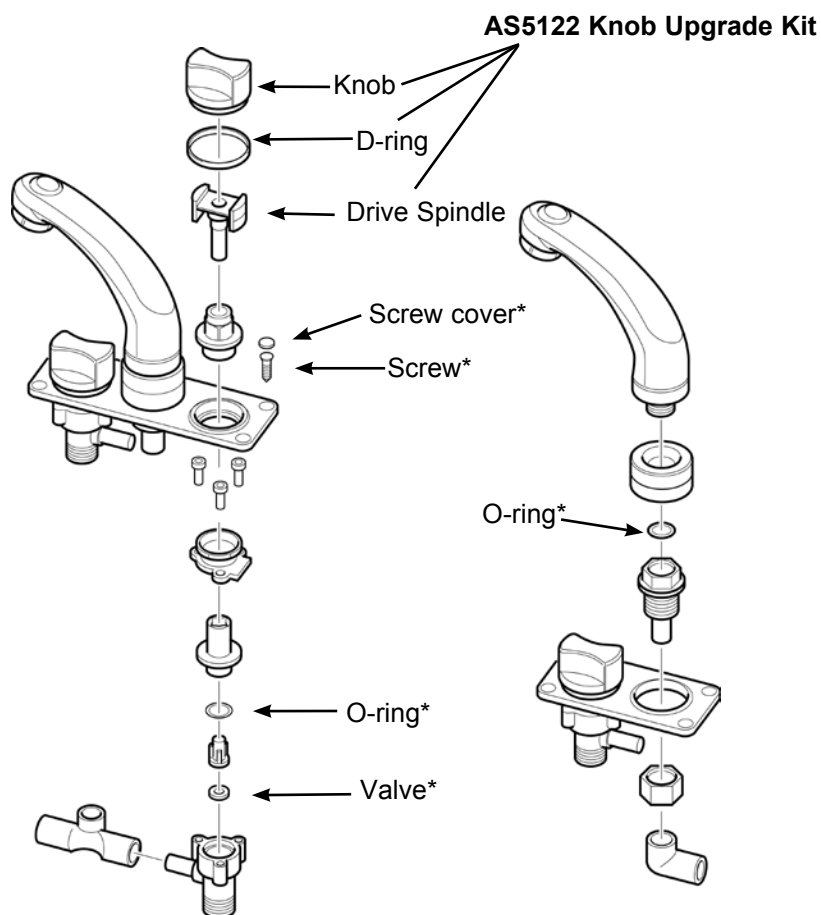
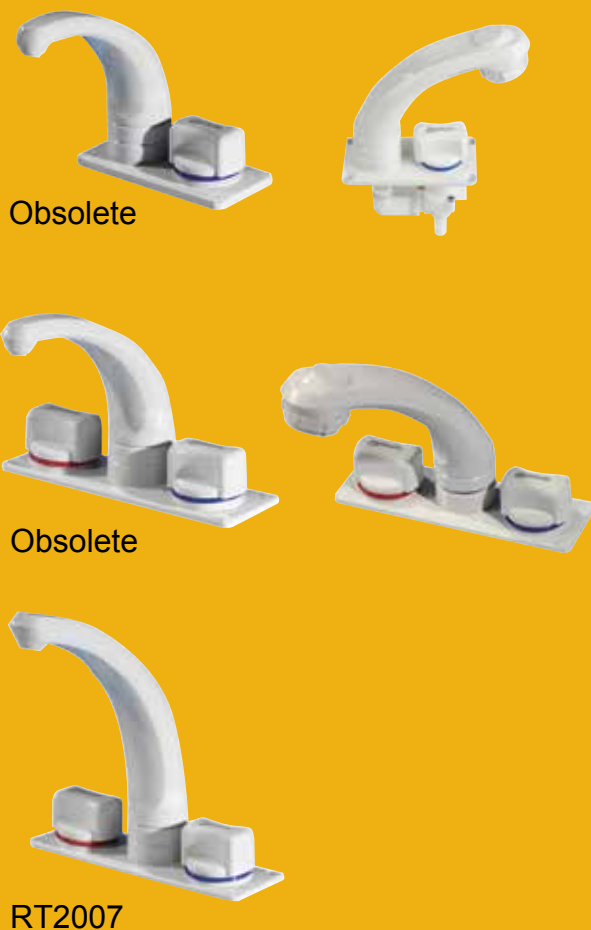
## Faucets - Tough, Lightweight ABS Range

### Elegance Single & Mixer Faucets Mk 2 (1/2" Threaded Connections)

**Single: RT1210; Mixer: RT2210**

#### Swivel Faucet Models

**Note\*** Contained in Service Kit AK5030



**Note:** These parts are now available with a rose adjustable outlet.

36

#### Accessories

Also available separately

**WF1530 Silverised Carbon Water Filter (inline)**

#### Service Kits

**AK5030 Service Kit with Complete Set of Serviceable parts for Elegance Faucets, Showers & Swim 'N' Rinse**

Qty	Containing
5	O-ring (Combo showerhead & Tee-piece)
4	Screw No.6 csk
2	O-rings (control unit)
2	Valve washers
1	O-ring (tap outlet)
4	Screw covers white
4	Screw covers beige
6	Large screw covers white (Swim 'N' Rinse only)

**RT9000 Microswitch Kit (2 switches)**

Qty	Containing
2	Microswitches
2	Switch clips
4	Terminal connectors

**AS5122 Knob Upgrade Kit White**

**AS5125 Long spout Assembly White**

Service kits and images continue on the next two pages  
See page 60 for further contact information





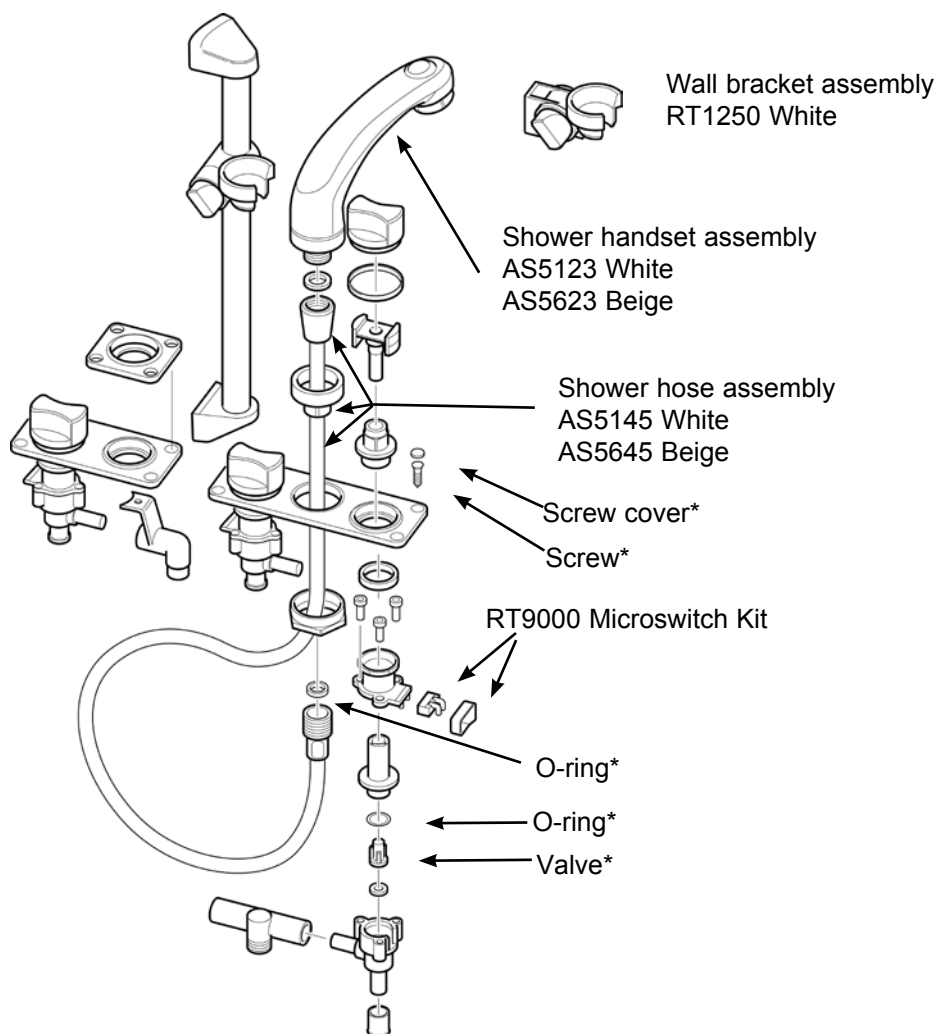
## Faucets - Tough, Lightweight ABS Range

### Elegance Combo Faucet/Shower Mk 3 and Swim 'N' Rinse Models

**Cold Only: RT1500; Mixer: RT2498, RT2500**

**Combined Model with Faucet and Shower Functions**

**Note\*** Contained in Service Kit AK5030.



#### Accessories

**RT1250 Shower Wall Bracket**  
(for use with RT2500)

**RT9000 Replacement Microswitch Kit**

**WF1530 Silverised Carbon Water Filter**  
(inline)

#### Service Kits

**AK5030 Service Kit with Complete Set of Serviceable Parts for Elegance Faucets, Showers & Swim 'N' Rinse**

Qty	Containing
5	O-ring (Combo showerhead* Tee-piece)
4	Screw No.6 csk
2	O-rings (control unit)
2	Valve washers
1	O-ring (tap outlet)
4	Screw covers white
6	Screw covers beige
6	Large screw covers white (Swim 'N' Rinse only)

**AS5123 Shower Handset/Spout Assembly**  
White

**AS5133 Replacement Handset/Spout**  
1/2" Threaded (White)

**AS5145 Shower Hose Assembly White (1.5 m)**

**AS5623 Shower Handset/Spout Assembly Beige**

**AS5645 Shower Hose Assembly Beige (1.5 m)**

**RT9000 Microswitch Kit (2 switches)**

Qty	Containing
2	Microswitches
2	Switch clips
4	Terminal connectors



## Faucets - Tough, Lightweight ABS Range

### Elegance Combo Faucet/Shower Mk 3 and Swim 'N' Rinse Models

**Cold Only: RT1500; Mixer: RT2498, RT2500**

Combined Model with Faucet and Shower Functions



AK5030



AS5122



AS5123



AS5133



AS5145



AS5147



AS5148



AS5149



AS5623



AS5626



AS5645



RT1750



RT9000



WF1530

#### Service Kits (Continued)

##### Swim 'N' Rinse Transom Showers

##### AS5122 Control Knob Upgrade Kit White (Mk 2)

Qty	Containing
2	Knobs
1	O-ring (blue)
1	O-ring (red)
2	Drive spindles

##### AS5133 Shower Handset/Spout (1/2" BSP) White

##### AS5147 Hose Assembly for Swim 'N' Rinse (7 ft/2.1 m) - includes hose and hose connectors for 12mm shower models

##### AS5149 Hose Connectors White Swim 'N' Rinse Showers

##### AS5148 Hose for Swim 'N' Rinse (7 ft/2.1 m) for 1/2" shower models

##### AS5626 Control Knob Upgrade Kit Beige (Mk 2)

Qty	Containing
2	Knobs
1	O-ring (blue)
1	O-ring (red)
2	Drive spindles

##### RT1750 Riser Bar

See page 60 for further contact information



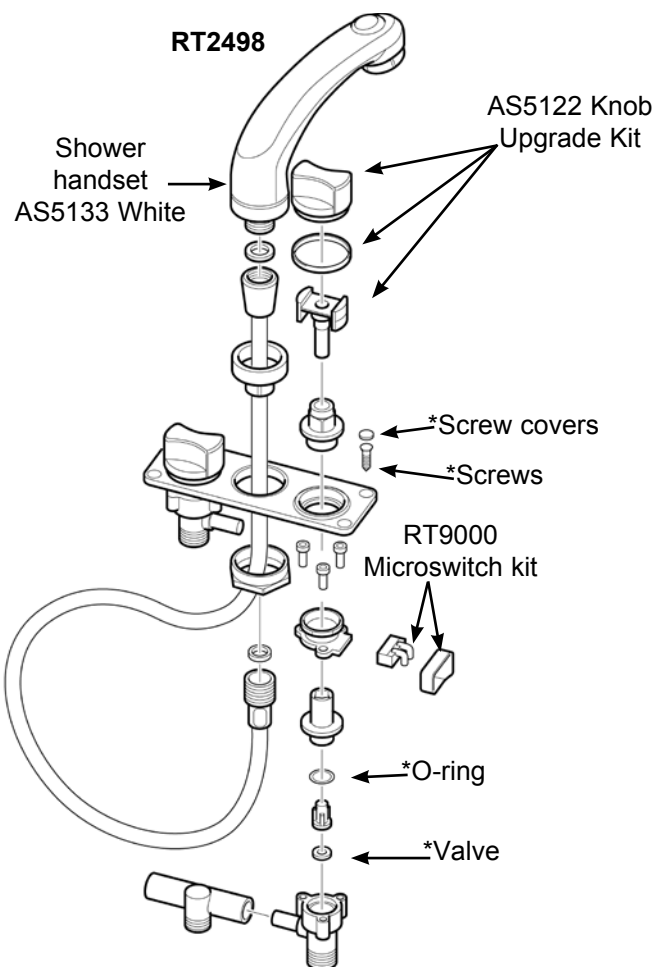
## Faucets - Tough, Lightweight ABS Range

### Elegance Combo Faucet/Shower Mk 3 (1/2" Threaded Connections)

**Cold Only: RT1470; Mixer: RT2498**

**Combined Model with Faucet and Shower Functions**

**Note\*** Contained in Service Kit AK5030



#### Service Kits

**AK5030 Service Kit with Complete Set of Serviceable Parts for Elegance Faucets & Showers**

Qty	Containing
5	O-ring (combo showerhead * Tee-piece)
4	Screw no.6 csk
4	Screw no.6 pan head
2	O-rings (control unit)
2	Valve washers
1	O-ring (tap outlet)
4	Screw covers white
4	Screw covers beige
6	Large screw covers white (Swim 'N' Rinse only)

#### RT9000 Microswitch Kit (2 switches)

Qty	Containing
2	Microswitches
2	Switch clips
4	Terminal connectors

#### RT1750 Riser Bar

**AS5020 Replacement short spout c/w 12mm male stem**

**AS5122 Knob Upgrade Kit White**

**AS5133 Shower Handset (1/2" BSP) White**

#### Swim 'N' Rinse Showers

**AS5148 Hose for Swim 'N' Rinse (7 ft/2.1 m)**

#### Accessories

**Available separately**

**WF1530 Silverised Carbon Water Filter (inline)**



Faucets - Tough, Lightweight ABS Range

## Elegance Combo Faucet/Shower Mk 3 (1/2" Threaded Connections)

**Cold Only: RT1470; Mixer: RT2498**

Combined Model with Faucet and Shower Functions



AS5020



AK5030



AS5133



AS5148



AS5122



RT1750



RT9000



WF1530

### MT0111, MT0140B, MT0161

#### Single Lever Faucets



MT0111

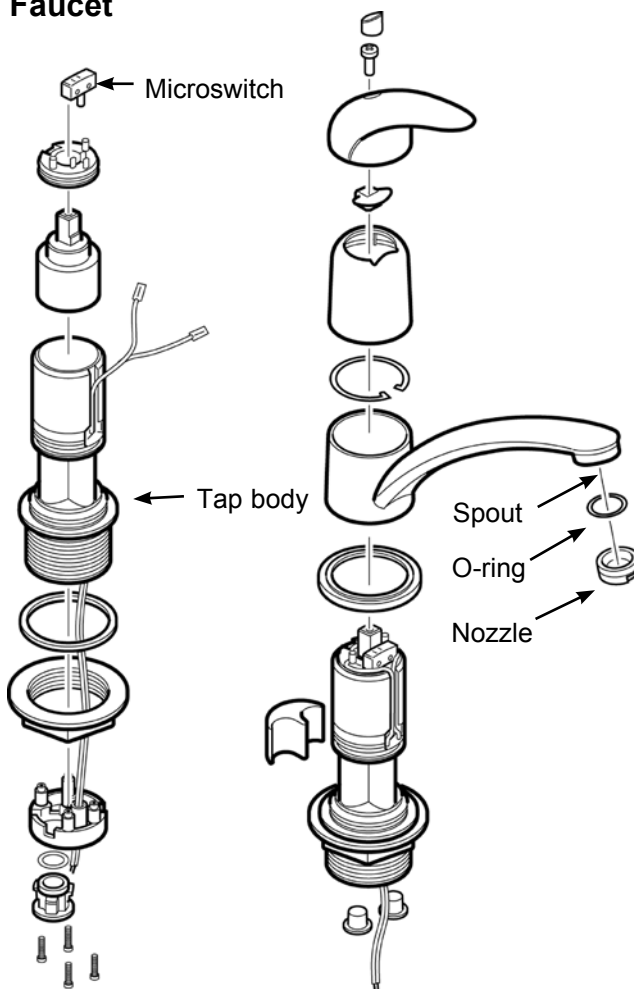


MT0161

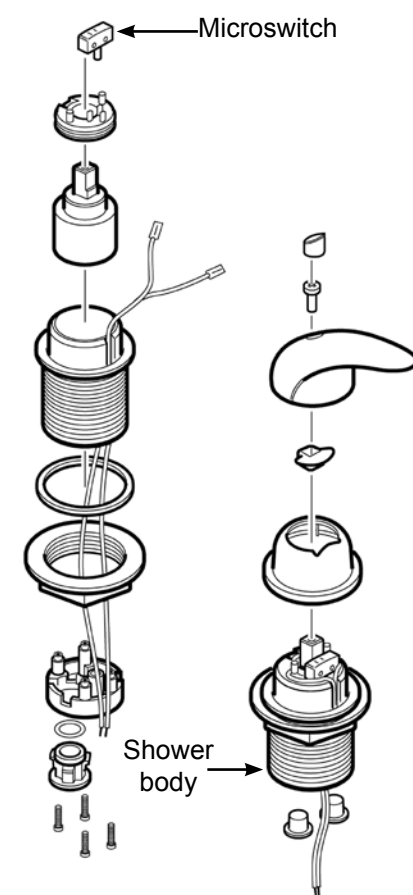


MT0140B/MT0144B

#### Faucet



#### Shower



#### Service Kits for Faucets

##### General

**MT8000** Microswitch Kit (2 switches)

##### Spouts

**AK6310** Chrome

#### Service Kits for Showers

##### RT1780B

Riser Bar Chrome

#### Adaptors

Connection to Whale Quick Connect 15 mm	WS1286B (Red) or WS1288B (Blue) and WU1222 (for angled arrangement)
Connection to 1/2" ID hose	WU1282B Stem adaptor 1/2" Hose - 12 mm Quick Connect
Connection to 3/8" ID hose	WS1280B Stem hose connector 3/8" Hose 12 mm Quick Connect



## Faucets - Single Lever Lightweight Range

### Elite Faucet Range

**MT0111, MT0140B, MT0161**

#### Single Lever Faucets



AK6310



MT8000



RT1250



RT1780B



## Electric Grey Shower / Waste Pumps and Tanks





## Electric Waste Pumps

### Gulper® 220 Shower Drain/Grey Waste Pump

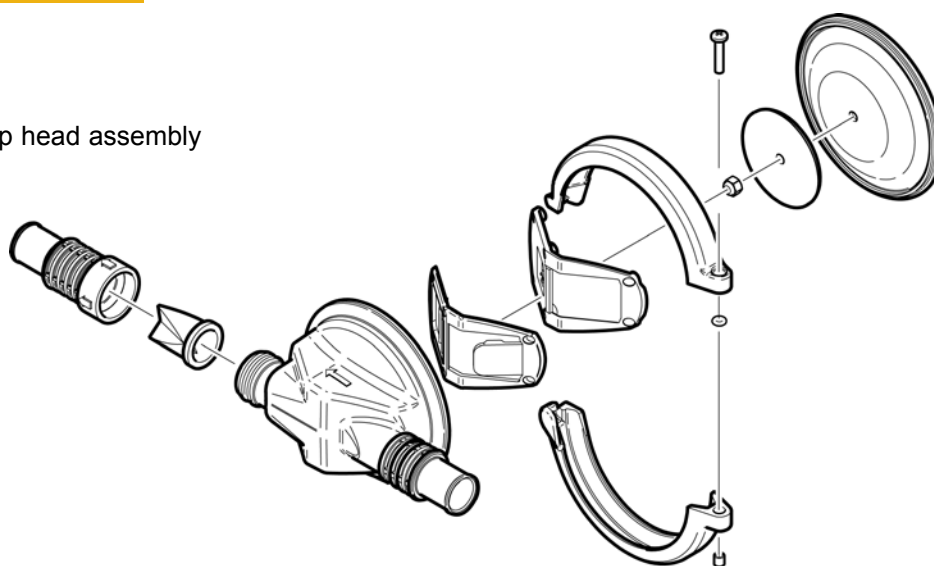
**BP1552 (12V d.c.), BP1554 (24V d.c.)**

#### Shower Drain Waste Pump

CURRENT  
MODEL



AK2050 Pump head assembly



**Note: Pump head ONLY available as spare**

44

#### Accessories

**GW0810 8 Ltr (2.2 US Gals) Grey Waste Tank**

**GW1610 16 Ltr (4.4 US Gals) Grey Waste Tank**

#### Service Kits

**AK2050 Replacement Pump Head for Gulper 320 and Gulper 220**

Qty	Containing
1	Diaphragm
1	Nyloc Nut M5
1	Screw Hex M5 x 16mm
1	Outlet Valve Tricuspid
1	Marine Head 3/4" and 1"
1	Valve Inlet and Outlet
1	Valve Plate
1	Outlet Valve Housing

**AS1562 Clamping Ring Kit**



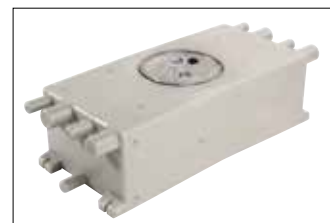
AK2050



AS1562



GW0810



GW1610

See page 60 for further contact information



## Electric Waste Pumps

### Gulper® 320 Shower Drain/Grey Waste Pump

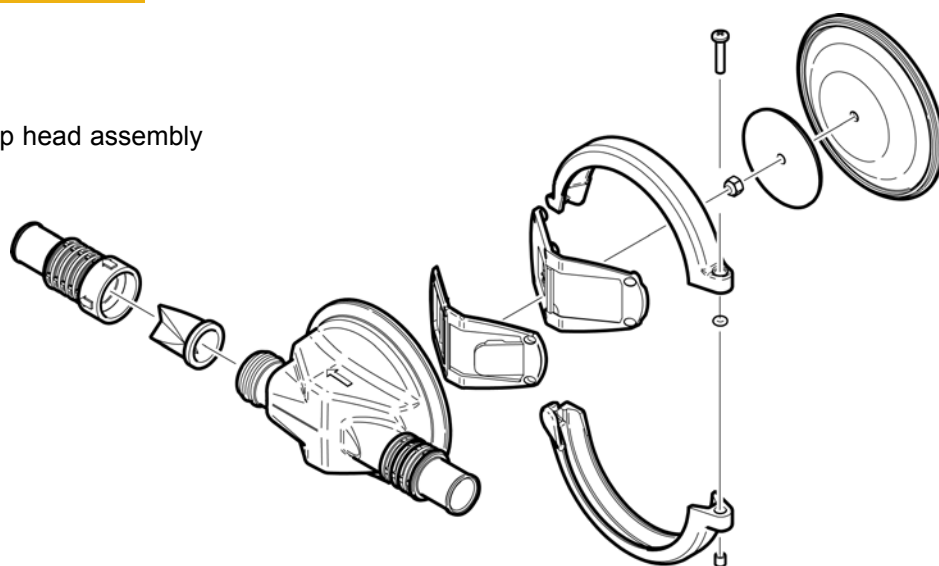
**BP2052 (12V d.c.), BP2054 (24V d.c.)**

**Note\*** Contained in Service Kit AK2050

CURRENT  
MODEL



AK2050 Pump head assembly



**Note:** Pump head ONLY available as spare

45

#### Accessories

**GW0810 8 Ltr (2.2 US Gals) Grey Waste Tank**

**GW1610 16 Ltr (4.4 US Gals) Grey Waste Tank**

#### Service Kits

**AK2050 Replacement Pump Head for Gulper 320 and Gulper 220**

Qty	Containing
1	Diaphragm
1	Nyloc Nut M5
1	Screw Hex M5 x 16mm
1	Outlet Valve Tricuspid
1	Marine Head 3/4" and 1"
1	Valve Inlet and Outlet
1	Valve Plate
1	Outlet Valve Housing

**AS1562 Clamping Ring Kit**



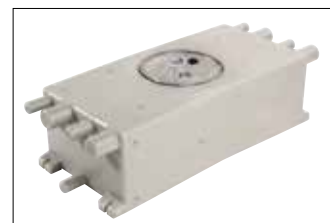
AK2050



AS1562



GW0810



GW1610

See page 60 for further contact information

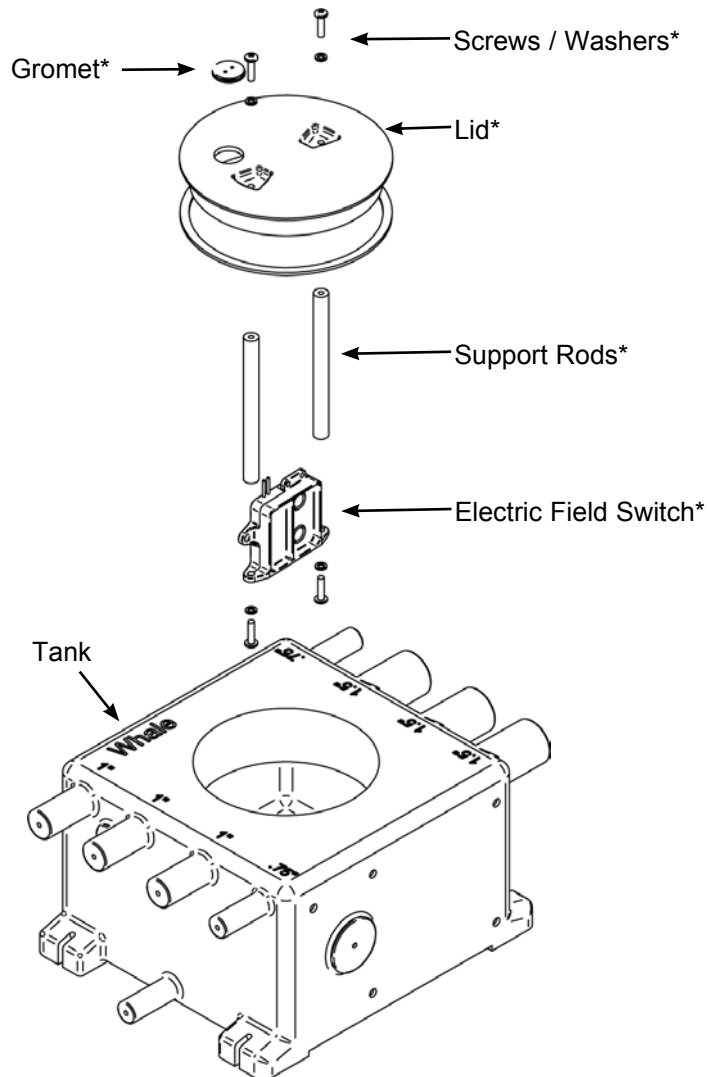
### Grey Waste Tank GW0810, GW0831, GW1610, GW1631

#### 8 Ltr and 16 Ltr Grey Waste Tank

CURRENT  
MODEL



CURRENT  
MODEL



\* Contained in Service Kit AK1001(B)

46

#### Service Kits

##### BE9003 Electric Field Sensor Switch

Qty	Containing
1	Electric field sensor switch

##### AK1001B Tank Lid with Switch built in

Qty	Containing
1	Lid
1	Electric field sensor switch
1	Gromet
2	Support rods
4	Screws
4	Washers



BE9003



AK1001B

## Electric and Manual Black / Toilet Waste Pumps



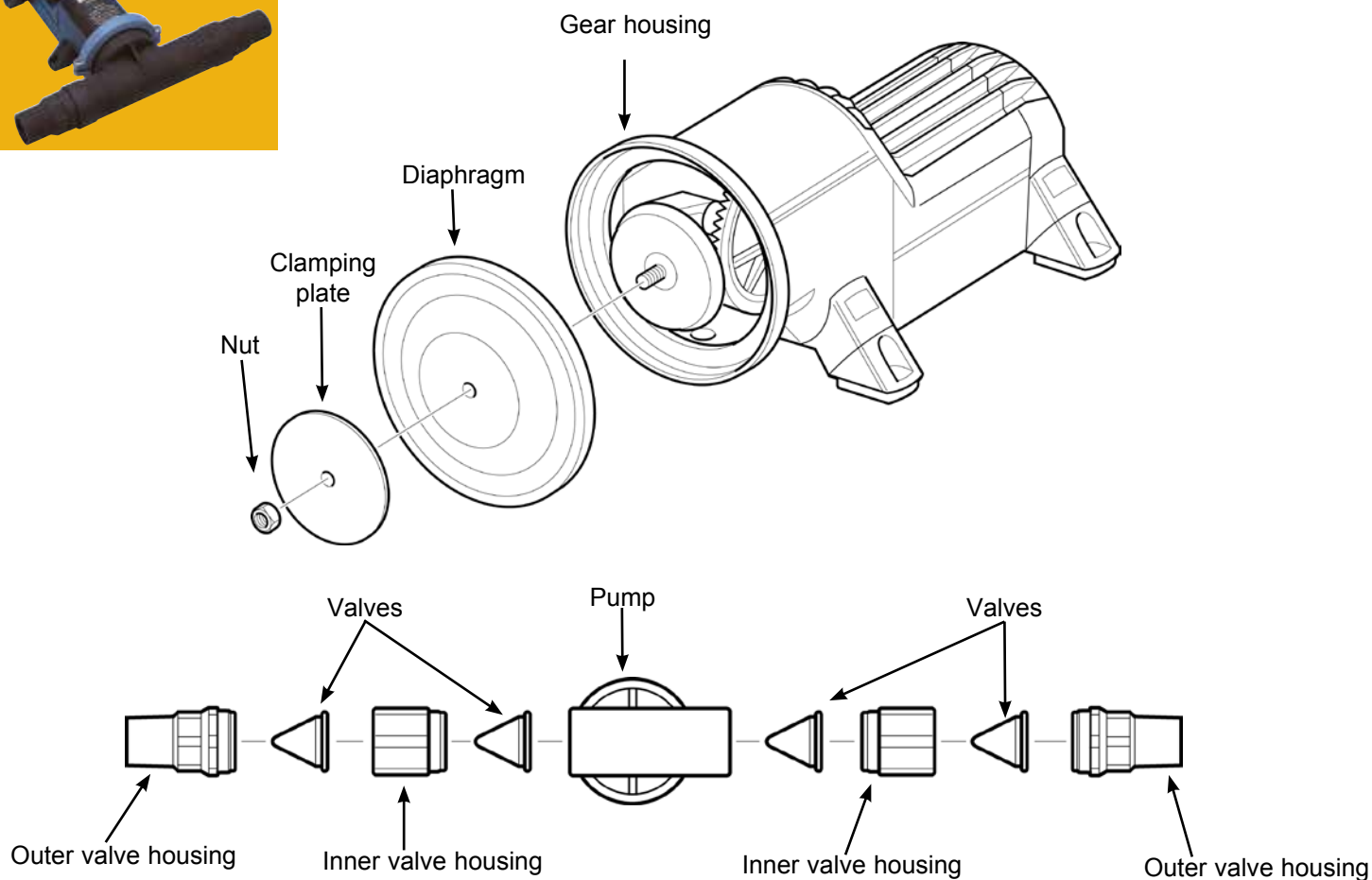


## Electric Toilet Waste Pumps

### Gulper® Toilet Waste Pump

**BP2552B (12V d.c.), BP2554B (24V d.c.)** - Pump Designed to Manage Unmacerated Toilet Waste

**Note\*** Contained in Service Kit AK1557



48

#### Accessories

**DV5606 1 1/2" Diverter Valve**

**EB3488 1 1/2" Elbow**

**YP6114 1 1/2" Y Piece**

#### Service Kits

**AK1557 with Set of Serviceable Parts for Gulper® Toilet Pump**

Qty	Containing
1	Diaphragm
4	Inlet/outlet valves

**AS1562 Clamping Ring Kit**



AK1557



AS1562



DV5606



EB3488



YP6114

See page 60 for further contact information



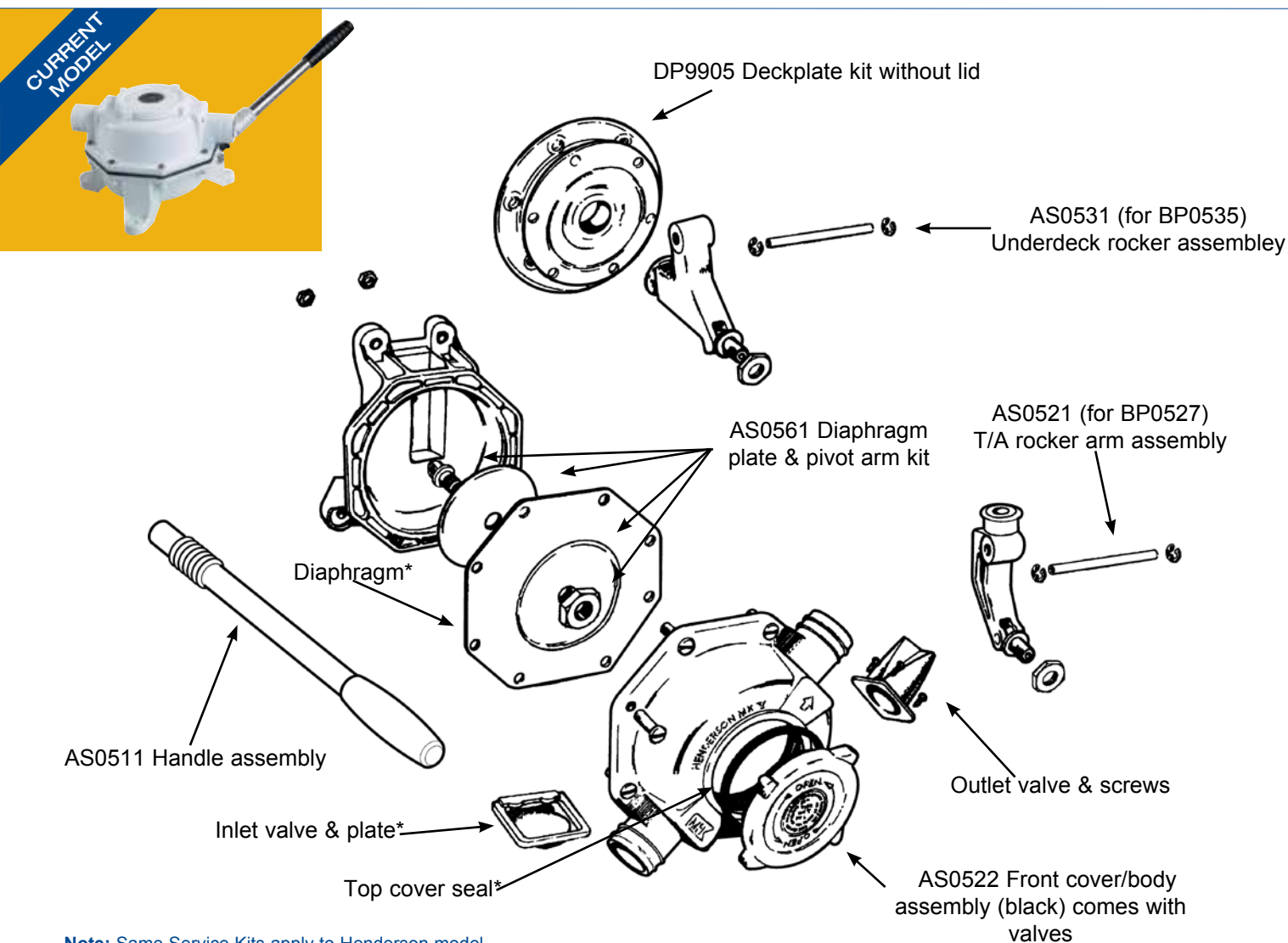


# Manual Toilet Waste Pumps

## Mk 5 Sanitation

**Bulkhead: BP0527, Thru Deck: BP0535**

**Note\*** Contained in Service Kit AK8050



**Note:** Same Service Kits apply to Henderson model

49

### Accessories

**DP9905 Deck Ring (for BP0535 only)**  
**DV5606 1 1/2" Diverter Valve**  
**EB3488 1 1/2" Elbow**  
**YP6114 1 1/2" Y Piece**

2 Circlip large  
2 Circlip small  
8 Screw M5x25  
8 Nut M5

**DP9905 Deckplate White without Lid**

Qty	Containing
1	Deckring white
1	Deckseal (with 6 holes)
4	Screws
4	Nuts
4	Screws M6x40
2	M6x40 CH

**AS0521 Rocker Arm Assembly (white) comes with Valves**

Qty	Containing
1	T/A Rocker arm
1	Pivot arm
1	Rocker arm nut
1	Pivot pin
1	Hinge pin
2	Circlip large
2	Circlip small

### Service Kits

**AK8050 Service Kit with Complete Set of Serviceable Parts**

Qty	Containing
1	Inlet valve plate
2	Inlet valve
2	Valve screw short
1	Top cover seal
1	Diaphragm
1	Outlet valve
2	Valve screw long

**AS0522 Front Cover/ Body Assembly (black) comes with Valves**

Qty	Containing
1	Top cover
1	Front cover/ body (white)
1	Inlet valve plate
1	Inlet valve
2	Valve screw short
1	Top cover seal
8	Assembly screws
1	Outlet valve
2	Valve screw long

Service kits and images continue on next page See page 60 for further contact information

**Bulkhead: BP0527, Thru Deck: BP0535**



AK8050



AS0511



AS0521



AS0522



AS0531



AS0561



DP9905



DV5606



EB3488



YP6114

### Service Kits (Continued)

#### AS0531 U/D Rocker Arm Assembly

Qty	Containing
1	Pivot bush
1	U/D Rocker arm
1	Fork insert
1	Pivot arm
1	Rocker arm nut
1	Hinge pin
2	Circlip large
2	Circlip small
1	Pivot pin

#### AS0511 Handle Assembly s/s c/w Lanyard

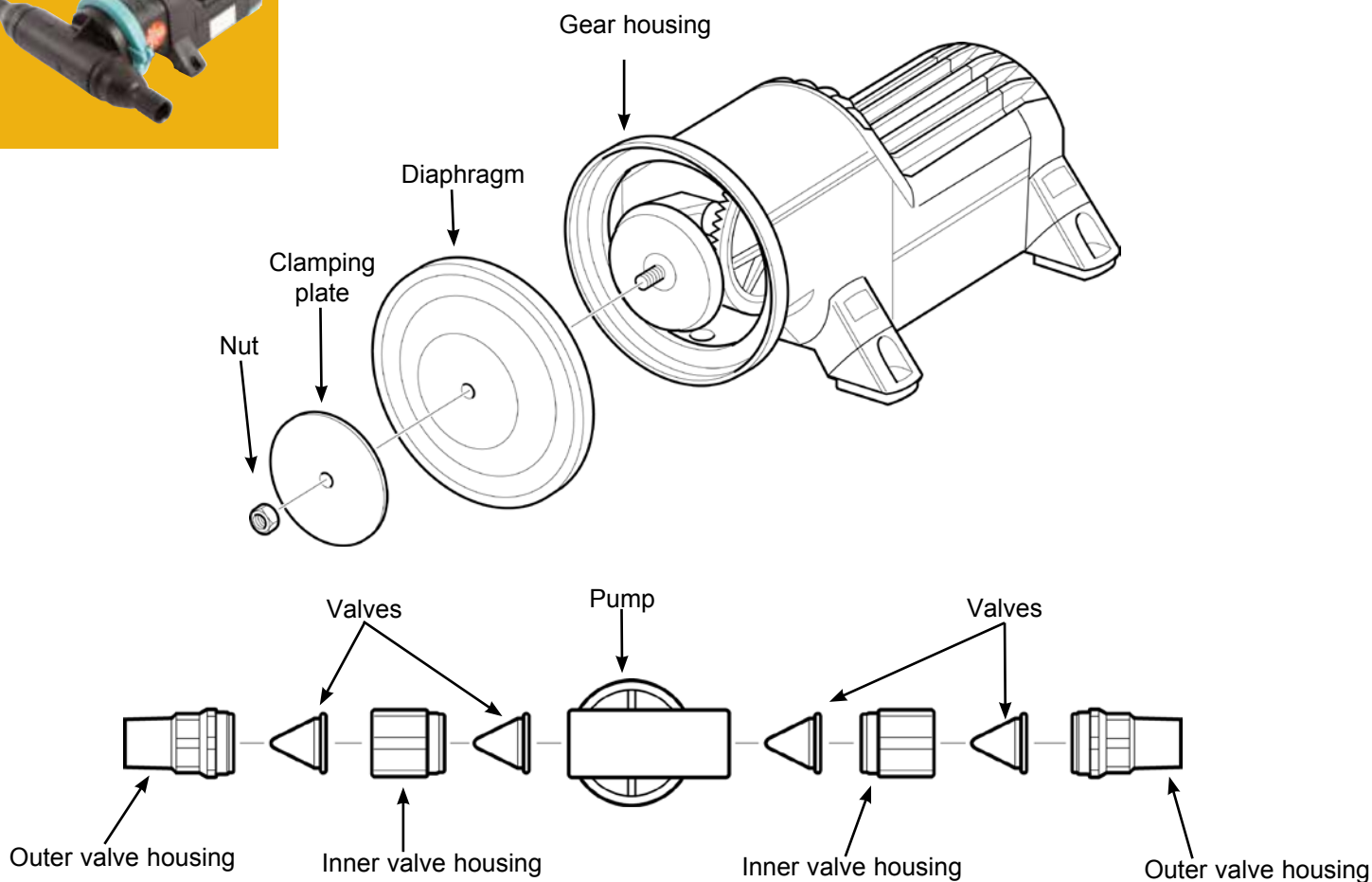
#### AS0561 Diaphragm Plate & Pivot Arm

Qty	Containing
2	Pivot arm
1	Diaphragm plate
1	Diaphragm nut
2	Circlip small

## Fishbox / Baitwell



### Fishbox Evacuation Pump



### Service Kits

#### AK1557 with Set of Serviceable Parts for Gulper® Toilet Pump

Qty	Containing
1	Diaphragm (Santoprene®)
4	Inlet/outlet valves

#### AS1562 Clamping Ring Kit



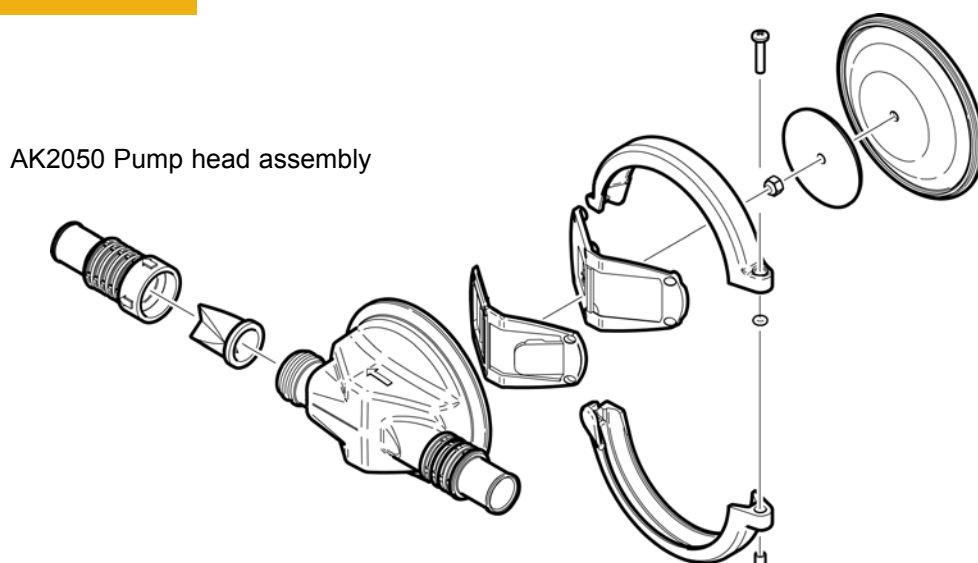
AK1557



AS1562

**BP2052 (12V d.c.), BP2054 (24V d.c.)**

**Note\*** Contained in Service Kit AK2050



AK2050 Pump head assembly

### Service Kits

#### AK2050 Replacement Pump Head for Gulper 320 and Gulper 220

Qty	Containing
1	Diaphragm (Santoprene®)
1	Nyloc Nut M5
1	Screw Hex M5 x 16mm
1	Outlet Valve Tricuspid
1	Marine Head 3/4" and 1"
1	Valve Inlet and Outlet
1	Valve Plate
1	Outlet Valve Housing

#### AS1562 Clamping Ring Kit



AK2050



AS1562

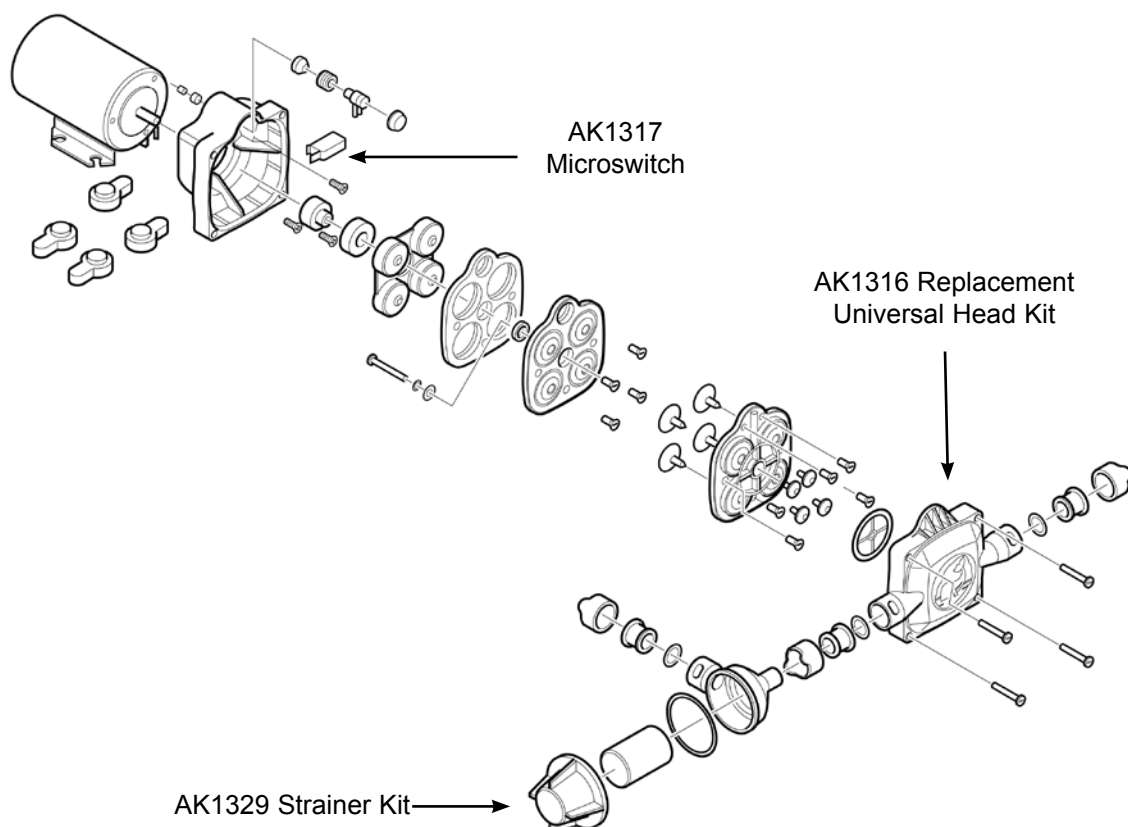
## Washdown





**WD 1815 (12V d.c.), WD1825 (24V d.c.)**

**Washdown Kit with Pump and Trigger**



### Service Kits

#### AK1316 Service Kit for Universal Pump Head

**Qty** 1 **Containing**  
Replacement head (includes front cover retrofit to obsolete UP style universals)

#### AK1317 Universal Microswitch Kit

**Qty** 1 **Containing**  
Microswitch

#### AK1319 Replacement Strainer

**Qty** 1 **Containing**  
Strainer



AK1316



AK1317



AK1319

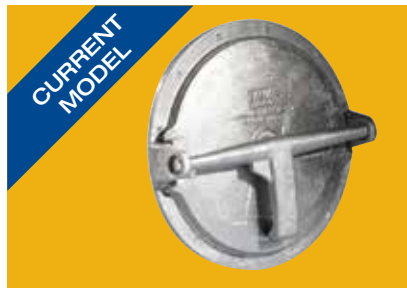
## Accessories



### Locker Door LD2000, LD3000, LD4000, Clear Lid Version LD4002

**Note\*** Contained in Service Kit AK4010

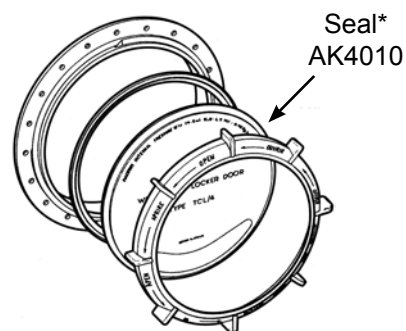
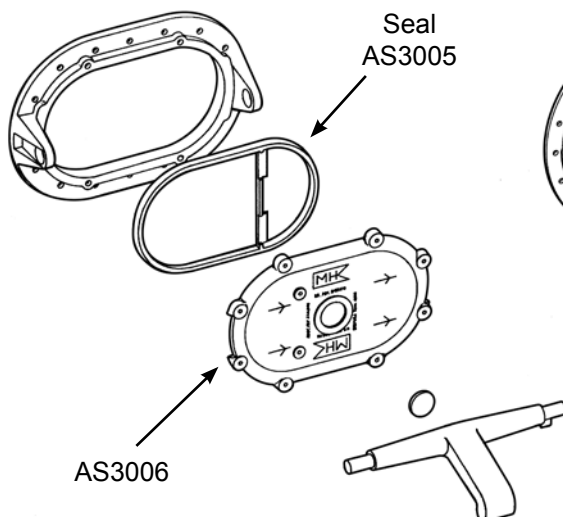
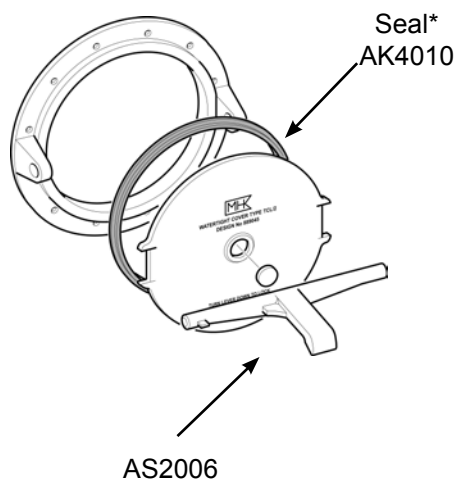
#### TCL 2



#### TCL 3



#### TCL 4



### Service Kits

#### AK3005 Service Kit of Serviceable Parts for TCL 3

Qty	Containing
1	Seal
1	Buffer pad

#### AK4010 Service Kit of Serviceable Parts for TCL 2 & TCL 4

Qty	Containing
1	Seal (moulded white) TCL 2 or 4
1	O-ring seal (black) TCL 4 only



AK4010



AK3005



AS3006





# Customer Support Services

Whale employees are committed to providing excellent customer service and product installation and maintenance advice.

**Contact our customer service team  
for technical advice:**



## Whale Support



tel: +44 (0)28 9127 0531  
info@whalepumps.com  
whalepumps.com



tel: +1 802 367 1091  
fax: +1 802 367 1095  
usasales@whalepumps.com  
whalepumps.com

Call us directly for product and installation advice

*"It is refreshing to find a manufacturer that not only supplies first rate products but also gives excellent back up service..."*

Ken Bell, letter to Inland Waterways News

### Boat Builder Technical Partnership

Our technical support team of highly skilled marine engineers work in partnership with power and sailboat builders around the world. This collaboration delivers bespoke systems that are ideal for each builder, saving both time and money.

**Please note:** Illustrations are for guidance only.  
For installation advice please contact Whale directly.

Neither the accuracy nor completeness of the information contained in this brochure is guaranteed by Munster Simms Engineering Limited and Whale Water Systems Inc. (a wholly owned subsidiary of Munster Simms Engineering Limited) and may be subject to change at its sole discretion. Munster Simms Engineering Limited and Whale Water Systems Inc. (a wholly owned subsidiary of Munster Simms Engineering Limited) may, at its sole discretion, change the technical performance, dimensions or appearance of any of its Whale products without prior notification to a purchaser.

Copyright Whale 2013- All rights reserved. WHALE®, GUSHER®, GULPER®, SMARTBAIL®, WHALE IC®, WHALE IC DEVICE and BABYFOOT® are trademarks of Munster Simms Engineering Limited, Bangor, Northern Ireland trading as Whale.

Whale's policy is one of continuous improvement and we reserve the right to change specifications without prior notice. Illustrations are for guidance purposes only.

Please note that by contacting Whale Support you will be indicating your consent to receiving product updates, recall information, help guides and appropriate marketing messages from us via post, email or telephone unless you indicated an objection to receiving such messages.

Santoprene® is a registered trade name of Advanced Elastomer Systems, LP, an Exxonmobil Chemical Affiliate.  
Delrin®, Teflon® and Neoprene are registered trade names of Dupont Neumeurs and Co.  
Monprene® is a registered trade name of Technore Apex.