

Hella *marine*



Vision and Innovation

2013 New Product Introduction

World leading LED technology
Power saving and ultra durable



Navigation Lamps • Interior Lighting • Courtesy Lighting • Deck Floodlights • Utility Lighting



Scan to view our full
product range

www.hellamarine.com



www.facebook.com/hellamarine



Hella marine

Vision and Innovation



At sea, power is often a scarce resource. Highly efficient LED lighting has a substantial role to play in conserving energy and enhancing a vessel without sacrificing functionality or compromising safety.

The Hella marine vision is to provide world leading marine lighting products that set benchmarks for quality, reliability, safety and energy efficiency and to meet customer expectations for outstanding service and support.

Hella marine 'fit and forget' LED lighting is firmly established as the solution of choice that meets long term reliability and economic considerations for astute owners and operators.

Hella marine benefits

5 YR
WARRANTY

5 Year Warranty

All Hella marine LED based lighting products carry a Five-Year Warranty providing peace of mind that the product will stand the test of time. The NaviLED Tri Colour carries a Seven-Year Warranty.

For more information visit: <http://www.hellamarine.com/en/about/>

IP 67
COMPLETELY
SEALED

IP 67 - Completely Sealed

Preventing moisture from corroding internal LED electronics is vital for long term durability in the harsh marine environment. Hella marine products are completely sealed and purpose designed for interior or exterior use, wet or dry.

CE

Electromagnetic Compatibility (EMC)

All Hella marine LED products are designed with components that suppress possible interference, both emission as well as susceptibility to emissions, to the limits prescribed in international standards. This prevents possible interference with radio, communications, navigation and other electrical equipment onboard.

LED

Class Leading Efficiency

Combining efficient LED sources with advanced optic technology, Hella marine LED products deliver more light output per watt than incandescent based lamps with significant energy savings.

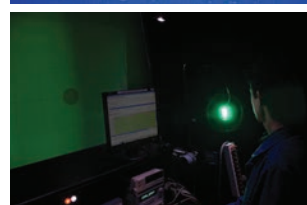
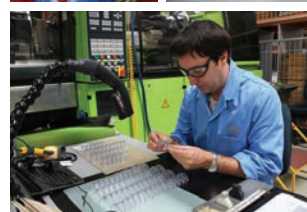
Ultra low heat signatures reduce heat onboard and prevent damage to surrounding materials.

**UV
RESISTANT**

Outstanding UV and Impact Resistance

Hella marine lamps utilise advanced impact resistant polymers that will not yellow or deteriorate in the harsh marine environment.

Proven design and manufacturing techniques ensure the products withstand demanding impact, shock and vibration 'tests to destruction' to help lift product reliability to new standards.





Internationally Proven LED Navigation Lamps

Designed and manufactured in New Zealand and proven in the harshest conditions worldwide, Hella marine LED navigation lamps provide power saving, highly visible and ultra durable lighting for reliability and safety at sea.

Combining efficient LED light sources with advanced optic technology, Hella marine LED products deliver more light per watt than traditional bulb lamps and thus provide considerable power saving. Each lamp is a completely sealed unit. Proven design, precision engineering, and the use of high impact acrylic materials ensure superior resistance to water, impact, UV and wear and tear. Advanced Multivolt™ circuitry provides reliable illumination across a range of DC inputs such as 8-28 volts or 9-33 volts. Multivolt™ LED lamps can be connected to 12 or 24 volt systems providing full light performance even during low battery voltages and voltage drop over long cable runs.

- Completely sealed
- Ultra low power consumption
- UV, corrosion and impact resistant
- Pre-wired with marine cable
- Multivolt™
- Reverse polarity and spike protected
- Internationally approved
- Yacht and powerboat certified
- 5 Year warranty



NAVILED[®] PRO

COLREG, BSH Certified LED Navigation Lamps.



LED
Multivolt

High Impact Lens for Powerboats and Yachts

Lamp Type	Visibility	Black Shroud	White Shroud
Port	2 NM	2LT 959 900-501	2LT 959 900-511
Starboard	2 NM	2LT 959 908-501	2LT 959 908-511
Stern	2 NM	2LT 959 909-501	2LT 959 909-511
Masthead*	3 NM	2LT 959 940-501	2LT 959 940-511
Bi-Colour**	2 NM	2LT 959 941-001	2LT 959 941-011

New

* for Powerboats and Sailing Yachts under Motor

** Ultra Heavy Duty Lens

LED
Multivolt

Ultra Heavy Duty Lens for Powerboats and Yachts

Lamp Type	Visibility	Black Shroud	White Shroud
Port	2 NM	2LT 959 900-601	2LT 959 900-611
Starboard	2 NM	2LT 959 908-601	2LT 959 908-611
Stern	2 NM	2LT 959 909-601	2LT 959 909-611
Masthead*	3 NM	2LT 959 940-601	2LT 959 940-611
Bi-Colour	2 NM	2LT 959 941-001	2LT 959 941-011

New

* for Powerboats and Sailing Yachts under Motor

NAVILED[®] 360

2 nautical mile LED Anchor and All Round lamps



NAVILED[®]

Compact 2 nautical mile LED Port, Starboard and Stern lamps



0670, 0747 and 0950 Series



High performance, durable and lightweight floodlighting



Energy efficient Hella marine Sea Hawk lamps are completely sealed, lightweight and ultra durable offering powerful illumination with significantly less consumption than halogen deck floodlights.

'Fit and forget' for a long service life

Every aspect, material and component of a Sea Hawk lamp has been carefully chosen to ensure longevity in the most demanding conditions providing peace of mind that the product will stand the test of time, without compromise.

Fully sealed and salt water durable

Each lamp is a completely sealed IP 67 unit manufactured from advanced polymers that will not corrode or discolor even under harsh UV. The lens is precision moulded from proven high performance Grilamid® Polyamide for strength and durability in the harshest environments.

Multivolt™ 9-33V DC

Advanced electronics ensure reliable illumination and lamp protection even under severe voltage fluctuations and low battery voltages.

Spread or Spot Optics

Spread lamps are ideal for the general illumination of cockpits and deck areas with a wide spread of crisp white light.

Spot lamps offer a narrow concentrated beam for spreader lighting on yacht masts or low speed docking lamps to illuminate objects in front of a vessel.

Pre-wired with marine cable

High quality sealed cable assemblies for time saving, completely sealed installations.

5 Year Warranty

Hella marine Sea Hawk lamps carry a 5 year manufacturers warranty for absolute peace of mind.



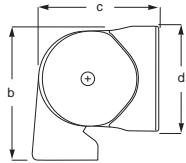
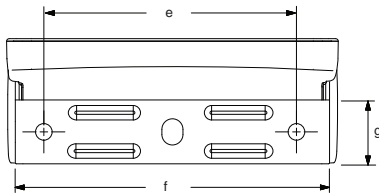
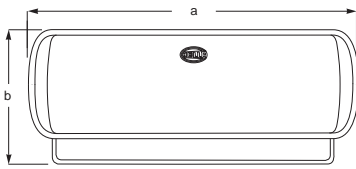
Friction mounts allow easy adjustment without tools.



Completely sealed lamp and cable entry.
Polished 316 stainless steel bracket.

Lamp Type	Sea Hawk (Bracket)		Sea Hawk XL
Material Description	UV and impact resistant plastic Heavy duty Grilamid® lens		
Bracket	Polished 316 stainless steel		
Colour Temperature	5500K (White) 1600K (Red)		
Cable	Pre-wired with twin core marine cable		
Operating Voltage	Multivolt™ 9-33V DC		
Degree of Protection	IP 67 - Completely Sealed		
Power Consumption	Sea Hawk <3W (<0.25A@12V / <0.13A@24V)		High Intensity Mode 12W (1.00A@12V / 0.50A@24V)
			Low Intensity Mode 2W (0.17A@12V / 0.08A@24V)
Number of LEDs	12		30
Dimensions	136mm (w) x 53mm (h) x 49mm (d)		170mm (w) x 68mm (h) x 58mm (d)
Weight (including cable)	250g		390g
Light Output	White Lamps - 240 lumens Red Lamps - 50 lumen		750 lumens
Approvals	CE		

Sea Hawk XL Dimensions



Dimensions
a = 170mm / 6.69"
b = 68mm / 2.68"
c = 58mm / 2.28"
d = 55mm / 2.17"
e = 120mm / 4.72"
f = 154mm / 6.06"
g = 30mm / 1.18"

Sea Hawk XL Bracket Mount

LED
Multivolt

White Light LED Floodlights - Spread

Voltage	Housing Colour	Part Number
9-33V DC	Black Housing	2LT 980 950-001
9-33V DC	White Housing	2LT 980 950-011

New

LED
Multivolt

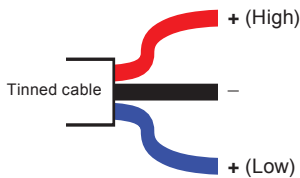
White Light LED Deck Lamps - Spot

Voltage	Housing Colour	Part Number
9-33V DC	Black Housing	2LT 980 950-201
9-33V DC	White Housing	2LT 980 950-211

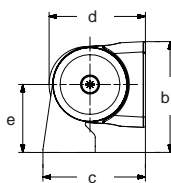
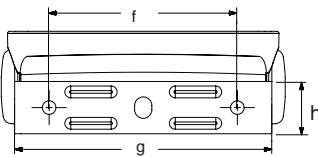
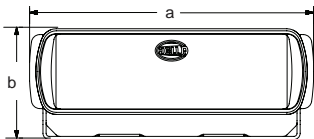
New

Integrated Dimming

A unique two-step high/low function operated via common 'off the shelf' switches is integrated into each Sea Hawk XL lamp.



Bracket Mount Dimensions



Dimensions
a = 136mm / 5.35"
b = 53.0mm / 2.08"
c = 49.0mm / 1.93"
d = 46.0mm / 1.81"
e = 32.5mm / 1.28"
f = 90.0mm / 3.54"
g = 123mm / 4.84"
h = 25.0mm / 0.98"

Sea Hawk Bracket Mount

LED
Multivolt

White Light LED Floodlights - Spread

Voltage	Housing Color	Part Number
9-33V DC	Black Housing	2LT 980 670-301
9-33V DC	White Housing	2LT 980 670-311

LED
Multivolt

White Light LED Deck Lamps - Spot

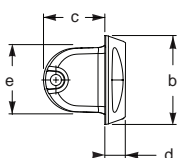
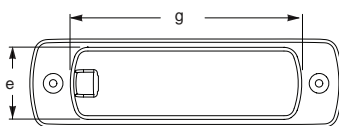
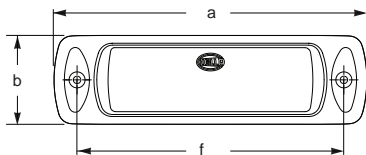
Voltage	Housing Color	Part Number
9-33V DC	Black Housing	2LT 980 670-201
9-33V DC	White Housing	2LT 980 670-211

Red Light LED Floodlights - Spread

Voltage	Housing Color	Part Number
12V DC	Black Housing	2LT 980 670-341
12V DC	White Housing	2LT 980 670-351



Recess Mount Dimensions



Dimensions
a = 176mm / 6.93"
b = 50mm / 1.97"
c = 35mm / 1.38"
d = 12mm / 0.47"
e = 42mm / 1.65"
f = 150mm / 5.91"
g = 132mm / 5.20"

Sea Hawk Recess Mount

LED
Multivolt

White Light LED Floodlights - Spread

Voltage	Housing Color	Part Number
9-33V DC	Black Housing	2LT 980 747-101
9-33V DC	White Housing	2LT 980 747-111

LED
Multivolt

White Light LED Deck Lamps - Spot

Voltage	Housing Color	Part Number
9-33V DC	Black Housing	2LT 980 747-001
9-33V DC	White Housing	2LT 980 747-011



0940, 0820 and 0828 Series LED Downlights

EuroLED
— 95 —

EuroLED
— 115 —



The latest development in energy efficient, low profile, completely sealed lighting



Riviera 56FB www.riviera.com.au

EuroLED LED downlights maximise the latest in state of the art LED technology to provide illumination comparable to 20W incandescent lamps for a fraction of the power consumption.

Completely sealed for interior and exterior installations, wet or dry, EuroLED lamps are the durable choice with class leading efficiency. Consumption is less than 4W offering significant reductions in energy consumption and heat generation compared to incandescent based lighting.

Advanced Hella marine optic engineering provides a wide spread of uniform illumination without glare or eye strain. Precise LED selection ensures class leading colour rendering with interior enhancing colour temperatures in white (5000K) or warm white (3000K).

EuroLED 95 and 115 lamps require no remote drivers or control wires, simply connect the positive and negative cables to 12V or 24V DC systems.

Each lamp operates on an input voltage between 10-33V DC and can also be fully dimmed and controlled via PWM based products such as the Hella marine Dimmer (5XA 998 572-001).

Internal Multivolt™ electronics provide robust electronic protection for ongoing reliability including significant spike and reverse protection.

Attractive bezel finishes include highly polished 316 stainless steel or UV resistant bright white plastic.

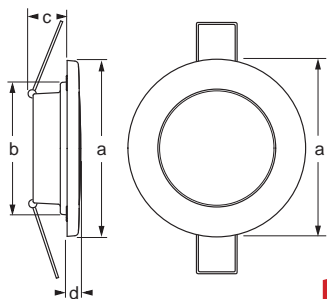
EuroLED downlights represent the latest in compact, energy saving and maintenance free 'fit and forget' Hella marine technology with impressive illumination.



- Completely sealed housing
- Pre-wired with marine cable

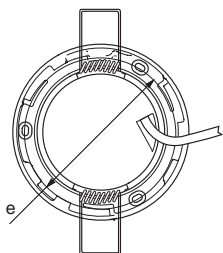


Lamp Type	EuroLED 95	EuroLED 115
Lens material	UV resistant enhanced impact acrylic	
Rim material	UV resistant plastic or 316 stainless steel	
Colour Temperature	5000K (White) 3000K (Warm White)	
Dimming	PWM compatible (e.g. Hella marine 5XA 998 572 -001)	
Cable	Pre-wired with 500mm twin core marine cable	
Operating Voltage	10-33V DC	
Power Consumption	< 4.0W (<0.33A@12V / <0.17A@24V)	
Degree of Protection	Completely sealed	
Dimensions	97mm (w) x 37mm (d)	116.5mm (w) x 31.5mm (d)
Weight (including cable)	145g	170g
Installation	Recess (screw or spring clip)	Recess or surface mount via spacer
Approvals	CE	



LED
Multivolt

New



Dimensions

- a = 95.0 mm / 3.75" with plastic rim
97.0 mm / 3.82" with stainless steel rim
b = 72.0 mm / 2.84"
c = 25.0mm / 0.98" with screw mounting
28.0 mm / 1.10" with spring clips
d = 9.0mm / 0.35"
e = 82.0mm / 3.23" PCD

EuroLED

95



0940 Series

White Light LED Downlights

Voltage	Rim Finish	Mounting	Part Number
10-33V DC	White plastic rim	Screw	2JA 980 940-001
10-33V DC	Polished stainless steel rim	Screw	2JA 980 940-011
10-33V DC	White plastic rim	Spring Clip	2JA 980 940-201
10-33V DC	Polished stainless steel rim	Spring Clip	2JA 980 940-211

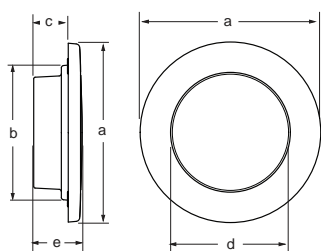


LED
Multivolt

New

Warm White Light LED Downlights

Voltage	Rim Finish	Mounting	Part Number
10-33V DC	White plastic rim	Screw	2JA 980 940-101
10-33V DC	Polished stainless steel rim	Screw	2JA 980 940-111
10-33V DC	White plastic rim	Spring Clip	2JA 980 940-301
10-33V DC	Polished stainless steel rim	Spring Clip	2JA 980 940-311



LED
Multivolt

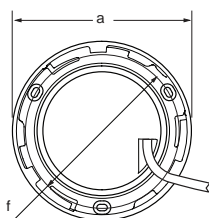
EuroLED

115

0820 Series Screw Mount

White Light LED Downlights

Voltage	Rim Finish	Part Number
10-33V DC	White plastic rim	2JA 980 820-001
10-33V DC	Polished stainless steel rim	2JA 980 820-011



Dimensions

- a = 115.0 mm / 4.53" with plastic rim
116.5 mm / 4.59" with stainless steel rim
b = 90.0 mm / 3.54"
c = 22.0 mm / 0.87"
d = 77.0mm / 3.03"
e = 31.5mm / 1.24"
f = 100.0mm / 3.94" PCD

LED
Multivolt

Warm White Light LED Downlights

Voltage	Rim Finish	Part Number
10-33V DC	White plastic rim	2JA 980 820-101
10-33V DC	Polished stainless steel rim	2JA 980 820-111



0828 Series Surface Mount with Switch

White Light LED Downlights

Voltage	Rim Finish	Part Number
10-33V DC	White plastic rim	2JA 980 828-001
10-33V DC	Polished stainless steel rim	2JA 980 828-011



LED
Multivolt

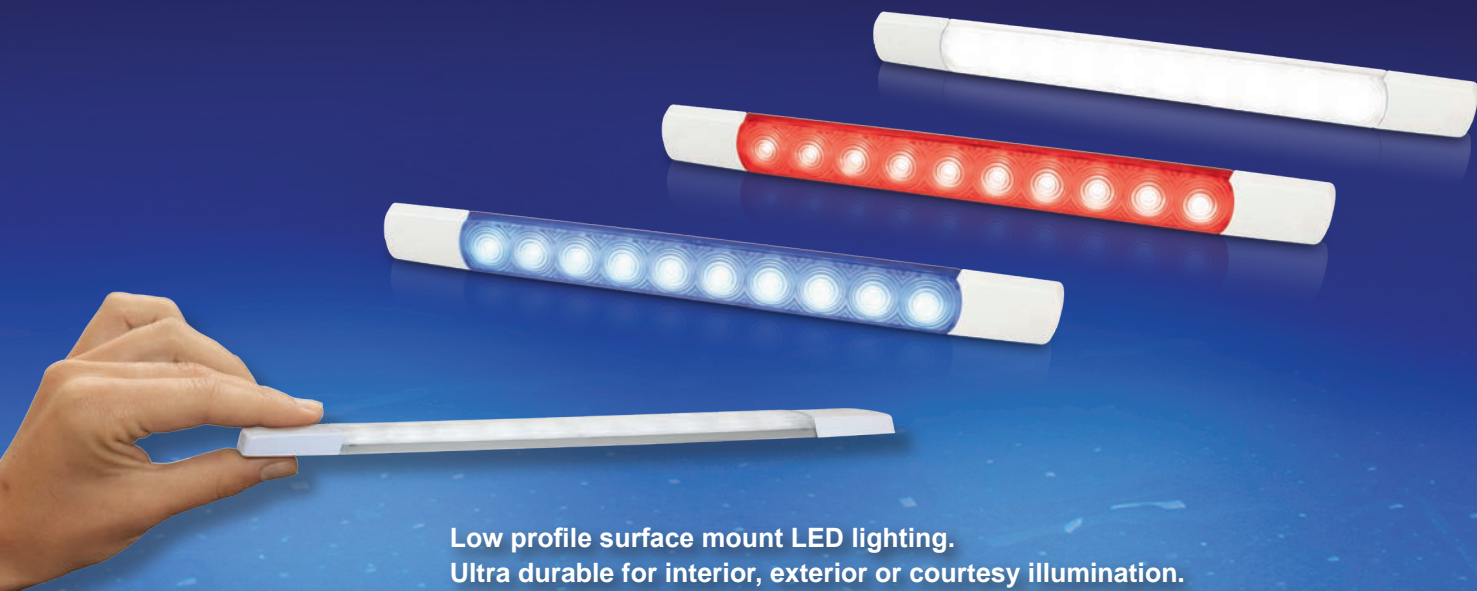
Warm White Light LED Downlights

Voltage	Rim Finish	Part Number
10-33V DC	White plastic rim	2JA 980 828-101
10-33V DC	Polished stainless steel rim	2JA 980 828-111



A white surface mount spacer ring with on / off switch is included with each lamp.

0881 Series Strip Lamps



Low profile surface mount LED lighting.
Ultra durable for interior, exterior or courtesy illumination.



1720 Matt Watson Signature www.stabicraft.com
12V Courtesy intensity white under gunnels

Hella marine surface mount strip lamps feature a shallow 10mm profile, completely sealed housings and class leading efficiency for a illumination duties from interior downlighting to cockpit enhancing courtesy lighting.

Available in two intensity options, **Interior Intensity** lamps (<3W) provide a wide spread of powerful illumination in white (5000K) or warm white (3500K) and are recommended as viable alternative to low power 7W fluorescent or 10W incandescent based lamps.

The **Courtesy Intensity** range (<2W) provides soft and uniform courtesy light pattern in white, warm white, blue or red. The range is ideal for interior or exterior applications including storage lockers, under cabinetry, under gunnels and more.

The low profile design offers an effortless, surface mount installation almost anywhere onboard. Fastenings in each end of the lamp body are covered by snap-on end caps for a clean and modern appearance.



Purpose designed for the harsh marine environment, surface mount strip lamps are salt water durable and thoroughly tested to withstand high levels of vibration, impact, and shock loads. The housings are precision manufactured from advanced UV resistant acrylic and are completely sealed.

Engineered optics efficiently harness and distribute available light without glare, harsh point sources or eye strain. The result is also highly effective illumination with minimal energy use.

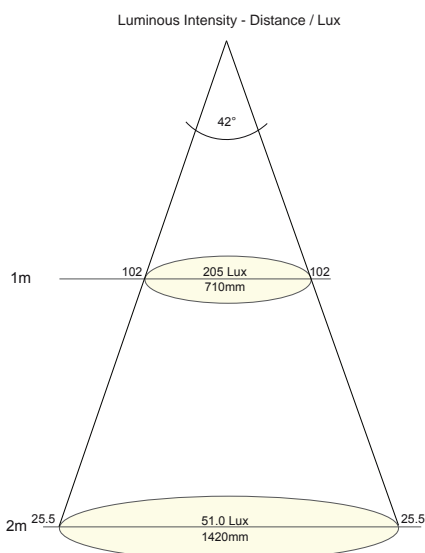
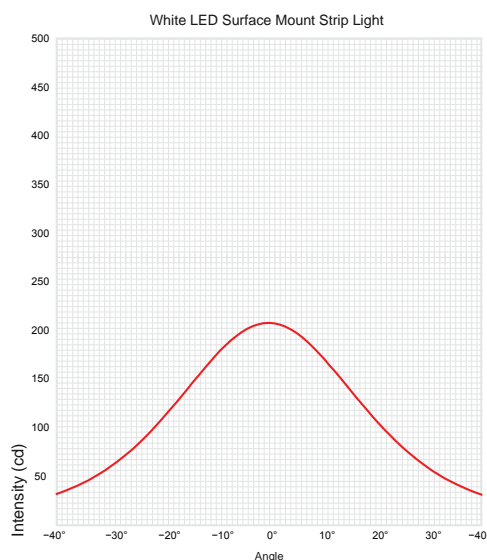
Quality twin core marine cable is pre-wired and sealed into each lamp for absolute water tightness, reliable electrical connections and ongoing reliability.

Surface mount LED strip lamps offer the latest in class leading energy efficiency and durability. The 'fit and forget' choice without compromise.



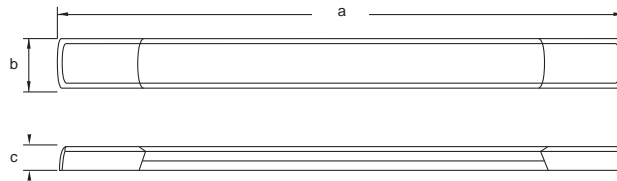
- Completely sealed housing
- Pre-wired with marine cable

Interior Intensity Candela and Lux performance. White light.



Low profile surface mount LED lamps. Highly efficient and durable.

Lamp Type	Interior Intensity	Courtesy Intensity
Lens Material	UV resistant enhanced impact acrylic	
Colour Temperature	5000K (White) 3000K (Warm White)	5000K (White), 3000K (Warm White), Red, Blue
Dimming	Hella marine Dimmer 5XA 998 572-001	
Cable	Pre-wired with 500mm of twin core cable	
Operating Voltage	12V DC or 24V DC	
Power Consumption	< 3.0W (< 0.25A@12V / < 0.16A@24V)	< 2.0W (< 0.17A@12V / < 0.08A@24V)
Degree of Protection	Completely Sealed	
Installation	Surface Mount	
Dimensions	285mm (w) x 25mm (h) x 10mm (d)	
Weight	75g (including cable)	



Dimensions

a = 285 mm / 11.22"
b = 25.0 mm / 1.0"
c = 10.0 mm / 0.39"

**Interior Intensity Surface Mount Lamps
0881 Series**

White Light LED Lamps

Voltage	End Cap Colour	Part Number
12V DC	White	2JA 980 881-002
24V DC	White	2JA 980 881-102

New

Warm White Light LED Strip Lamps

Voltage	End Cap Colour	Part Number
12V DC	White	2JA 980 881-202
24V DC	White	2JA 980 881-302

New

**Courtesy Intensity Surface Mount Lamps
0881 Series**

White Light LED Strip Lamps

Voltage	End Cap Colour	Part Number
12V DC	White	2JA 980 881-012
24V DC	White	2JA 980 881-112

New

Warm White Light LED Strip Lamps

Voltage	End Cap Colour	Part Number
12V DC	White	2JA 980 881-212
24V DC	White	2JA 980 881-312

New

Blue Light LED Strip Lamps

Voltage	End Cap Colour	Part Number
12V DC	White	2JA 980 881-402
24V DC	White	2JA 980 881-502

New

Red Light LED Strip Lamps

Voltage	End Cap Colour	Part Number
12V DC	White	2JA 980 881-602
24V DC	White	2JA 980 881-702

New

EuroLED
— 150 —

EuroLED
— 130 —

Efficient, state-of-the art LED lamps offering advanced technology for durable and power saving interior and exterior installations

The durability and efficiency of Hella marine EuroLED technology continues in a new generation of completely sealed LED lamps.

Hella marine touch switching technology makes lighting control beautifully simple. Touch the red pad for red light, the white pad for white light. Hold a finger on the pad for two seconds and the lamp will cycle to the desired intensity level.

Power consumption is a low 4W on white (0.33A@12V) and less than 1.5W on red (less than 0.125A@12V). This provides significant energy savings on board, yet each device offers an effective intensity and wide spread of illumination.

Glare diffusion without light loss is important with any LED lamp to maintain efficiency and safety. Significant eye strain can result from periods of looking directly into a powerful LED point source. Advanced Hella marine lens technology provides a safe, smooth and uniform light pattern, without glare or discomfort.

Dual colour EuroLED lamps can be remotely operated from multiple points via ON/OFF/ON momentary switches. Holding the external switch for two seconds will synchronise the lamps to the same colour and/or intensity level. Light levels are stored by the lamps circuitry, even when a vessel's batteries are turned off. The lamp will turn on at the colour intensity previously set, regardless of power interruption.

The durability of EuroLED Touch lamps is outstanding. Each lamp is a completely sealed unit, highly impact and shock resistant for an ultra long service life.

Integrated Multivolt™ electronics provide consistent illumination and protection across a range of voltages from 9-33 DC, even under severe voltage fluctuations, low battery voltages and long cable runs.

EuroLED technology provides ultra reliable, power saving illumination for a wide range of commercial and recreational applications.



EuroLED
— 150 —

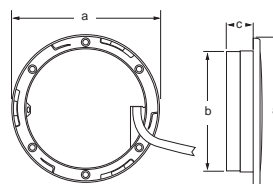


LED **CE**
Multivolt



150mm surface and recess mount

- 4.0W power consumption
- Completely sealed
- Multivolt™ 9-33V DC
- Pre-wired with marine cable
- 0-10V dimming option
- 316 stainless bezel option



Dimensions

a = 150 mm / 5.90"
b = 124 mm / 4.88"
c = 20 mm / 0.79"

EuroLED
— 130 —

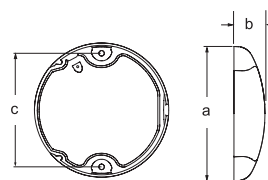


LED **CE**
Multivolt



130mm surface mount

- 4.0W power consumption
- Completely sealed
- Multivolt™ 9-33V DC
- Pre-wired with marine cable



Dimensions

a = 129.5mm / 5.10"
b = 29.5mm / 1.16"
c = 110mm / 4.33"



Class leading LED interior lighting

Hella marine Rakino, Tiri, and Waiheke series LED downlights offer class leading efficiency and completely sealed ultra durable construction.

The lamps are ultra efficient and provide substantial power saving benefits compared to incandescent lighting, resulting in a ultra low heat signature that makes the lights safe to touch and will not cause damage to surrounding materials.

Each lamp is completely sealed and can thus be installed almost anywhere on board, interior or exterior, wet or dry. Advanced Hella marine engineered lenses and optics provide intense light without glare or eye strain.

- Completely sealed for interior or exterior use
- Pre-wired with tinned marine cable
- Direct connection to 12V or 24V DC systems
- Cool operating temperature
- 5000K (White) or 3000K (Warm White) colour temperature options
- Dimmable with Hella marine 2 Group Dimmer 5XA 998 572-001
- Compatible with digital vessel control and monitoring systems



LED Courtesy & Step lighting

Attractive, power saving and completely sealed LED lighting for enhancing interiors and exteriors.



- Completely sealed
- < 0.5W power consumption
- UV and impact resistant acrylic
- Pre-wired with marine cable
- Multivolt™ and single voltage options
- Stainless steel rim options
- Recess mount or surface mount options





Hella marine

Vision and Innovation

New !
Ultra wide spread LED



Heavy duty marine lamps.
Outstanding light intensity, class leading efficiency and proven durability.

DuraLed® lamps provide powerful white light and a safe, energy efficient and reliable alternative to incandescent and fluorescent lighting.

Purposely designed for engine rooms, storage lockers, lazarettes and many heavy duty applications where reliability must not be compromised.

Advanced Hella marine lens and optic engineering ensures an ultra wide spread of light without glare or harsh point sources.

Each lamp is completely sealed IP 67, impact resistant and shock resistant, ensuring an ultra long service life.

Multivolt™ circuitry provides constant illumination and circuit protection from 9-33V DC, even under severe voltage fluctuations. Spike protection, reverse polarity protection and over-voltage protection are all built-in benefits of the sophisticated electronics inside.

DuraLed® lamps are surface mounted and feature a unique installation system where the fastening load is taken up by a heavy duty nylon bush to eliminate possible stress on the lamp housing.

DuraLed® Engine Room & Utility Lighting

LED
Multivolt

ISO
IGNITION
PROTECTED

CE

50
LED

36
LED

20
LED

12
LED



DuraLed®

LED

IP 67
COMPLETELY
SEALED

9-33V
MULTIVOLT™

CE

UV
RESISTANT

MADE IN
NZ

5 YR
WARRANTY

LED
Multivolt

DuraLed® 12 LED Lamps

Voltage	Shroud Colour	Part Number
12/24V DC	White	2JA 959 700-101
12/24V DC	Black	2JA 959 700-121

12
LED

LED
Multivolt

DuraLed® 12 LED Lamps with Switch

Voltage	Shroud Colour	Part Number
12/24V DC	White	2JA 980 704-001
12/24V DC	Black	2JA 980 704-021

12
LED

LED
Multivolt

DuraLed® 20 LED Lamps

Voltage	Packaging	Part Number
9-33V DC	Carton	2JA 980 608-001
9-33V DC	Blister	2JA 980 608-002

20
LED

LED
Multivolt

DuraLed® 36 LED Lamps

Voltage	Packaging	Part Number
9-33V DC	Carton	2JA 959 037-521
9-33V DC	Blister	2JA 959 037-522

36
LED

LED
Multivolt

DuraLed® 50 LED Lamp

Voltage	Packaging	Part Number
9-33V DC	Carton	2JA 980 604-011

50
LED