



Seeyond. See smarter™





## Bringing light to life

Seyond™ is defined by devotion to its mission — to design, build, and mass produce the world's highest-performing state-of-the-art LiDAR systems. Headquartered in Silicon Valley, with additional facilities in Suzhou and Shanghai, Seyond represents the vanguard in long-range image-grade LiDAR and autonomous driving.

Our technologies are enthusiastically embraced across automotive, smart transportation, rail transit, and industrial automation by industry leaders across the world.

We attribute our success to a simple formula that unifies clarity of vision, tireless dedication to quality engineering & manufacturing and unwavering commitment to our customers.

So how can we help you today?



## Seyond Europe GmbH

Founded in 2016, Seyond is headquartered in Silicon Valley, USA, and has more than 800 employees with core R&D teams worldwide. These include our European team who is nestled in Eschborn, near the bustling city of Frankfurt am Main, Germany. Headed by Conrad-Christian Kimmle, Seyond Europe GmbH, with its strategic location, serves as our gateway to service the extensive and diverse needs of the European market—connecting us with clientele ranging from automotive manufacturers to pioneering intelligent transportation system makers.



Rigorously Tested & Ready for Delivery

ISO26262-2-9:2018 | ISO9001 | IATF 16949:2016

# Our Products

## Ultra Long-Range

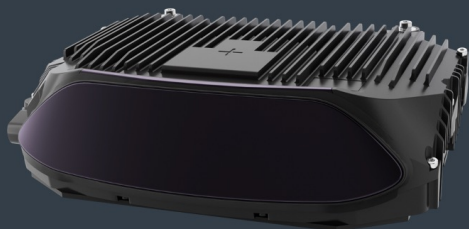
### Falcon K

#### *Long Range is Safety*

Long range LiDAR detection is a key technology that ensures more safety. Falcon K provides ultra-long detection range up to 500 meters and can detect dark objects with 10% reflectivity up to 250 meters. It spots distant obstacles earlier and gives the vehicle time to respond in advance, improving the autonomous driving experience.

#### Precision with Dynamic Region of Interest (ROI)

Falcon K delivers image-grade point cloud and dynamic region of interest (ROI). Image-grade point cloud and dynamic-frame high-density region of interest ensure clarity of key detection and safe autonomy in any environment.



more Info

#### Key Features

Detection Range	2 m – 500 m (250m @10%)
Resolution in ROI* (H x V):	0.09° x 0.08°
Field of View* (HxV):	120°x25°
Interface:	1.000base - T1 Automotive Ethernet
Dimensions (HxWxD)	60.4 mm x 228 mm x 149.8 mm
Weight	1.7 kg

\*Configurable. For more information, please contact Seyond

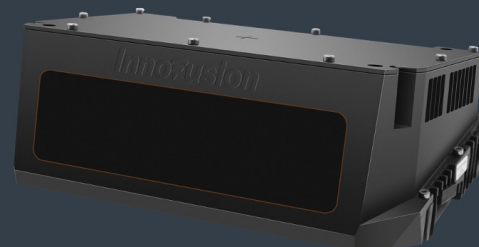


### Falcon Prime

#### *Long Range is Safety*

Falcon Prime is an image-grade LiDAR developed by Seyond as a core sensor for Intelligent Transportation Solutions (ITS) like V2X, smart highway, etc. Wide application scenarios include Smart City, Security, Railway and industrial automation. Highly-integrated design, easy deployment and maintenance enable its long-term stable operation on the roadsides

- 500m ultra-long detection range, image-grade ultra-high resolution
- Configurable scan pattern
- 1550nm laser wavelength, Eye-safe
- Mass produced high quality sensor



more Info

#### Key Features

Detection Range:	1.5 – 500 m (250m @10%)
Resolution in ROI* (H x V):	0.09° x 0.08°
Field of View* (HxV):	120°x25°
Interface:	TCP and HTTP APIs
Dimensions (HxWxD)	83.8 mm x 267.6 mm x 171.3 mm
Weight	2.3 kg

\*Configurable. For more information, please contact Seyond



# Our Products

## Long and Mid-to-Short-Range

### Robin-E

#### *Powerful performance for safer mobility*

Robin E features 200-meter range at 10% reflectivity with ultra-high resolution of  $0.1^{\circ} \times 0.2^{\circ}$ , which ensures the perception and safety requirements of assisted driving.

The Robin E scanning architecture borrows from Falcon's proven automotive grade design, ensuring stable and reliable performance. With advanced modular design, Robin E can be easily integrated into roof, lights, bumpers or even behind the windshield with compact size and ultra-low power consumption.



more Info



#### Key Features

Detection Range	0.2m~250m (180m@10%)
Resolution(H×V)	$0.1^{\circ} \times 0.2^{\circ}$
Field of View(H×V)	$120^{\circ} \times 24^{\circ}$
Interface:	1.000base-T1 Automotive Ethernet
Dimensions (H×W×D)	34 mm × 122 mm × 105 mm
Weight	0.6 kg



### Robin-W

#### *Ultra-wide FOV*

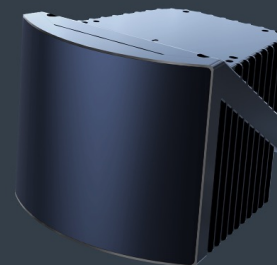
Robin W features an ultra-wide field of view (FOV) of  $120^{\circ} \times 70^{\circ}$ , with broader side-view detection and no blind zones.

Robin W detects up to 70 meters at 10% reflectivity which is twice the detection range of other side-view lidar, while maintaining a minimum range of down to 0.1 meters which keeps the blind zone at an absolute minimum.

Robin W can provide image-grade resolution  $0.1^{\circ}(H) \times 0.36^{\circ}(V)$  and over 1.77 million points per second, which enables better perception planning control.



more Info



#### Key Features

Detection Range	0.1m~250m (70m@10%)
Resolution(H×V)	$0.13^{\circ} \times 0.36^{\circ}$
Field of View(H×V)	$120^{\circ} \times 70^{\circ}$
Interface:	1.000base-T1 Automotive Ethernet
Dimensions (H×W×D)	85 mm × 102 mm × 105 mm
Weight	0.8 kg

## Seyond Europe GmbH

Conrad-Christian Kimmle  
Managing Director

+49 6196 96988 01  
[Christian.Kimmle@Seyond.com](mailto:Christian.Kimmle@Seyond.com)



Maria Solovieva  
Director Business Development ITS

+49 6196 96988 06  
[Maria.Solovieva@Seyond.com](mailto:Maria.Solovieva@Seyond.com)



[www.Seyond.com](http://www.Seyond.com)

Impressum:

© Seyond Europe GmbH | Frankfurter Straße 92, 65760 Eschborn

