







FOR OWNERS

LINK

SMART VESSEL MONITORING, CONTROL & MANAGEMENT

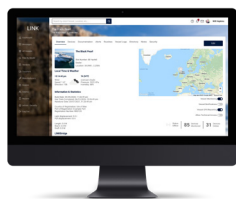
-  **REMOTE & LOCAL MONITORING**
Monitor all your onboard devices (marine, network IP and AV) locally and from anywhere in the world.
-  **REMOTE & LOCAL CONTROL**
Live two-way control of your onboard devices, both locally and from anywhere in the world.
-  **INSTANT ALERTS & NOTIFICATIONS**
LINK sends device alerts and status updates to you or your crew by email, SMS or WhatsApp.
-  **FULL INTEGRATION PORTFOLIO**
LINK Supports integration with all onboard protocols, including NMEA, KNX, Böning, and C-Zone.
-  **EASY FLEET MANAGEMENT**
Full fleet management capabilities to manage all your vessels in one place.
-  **SMART HOME INTEGRATION**
LINK is easy to integrate with your existing smart home system, inc Control4, Crestron, RTI and Savant.

LINK ECOSYSTEM



LINKbridge

Custom-designed hardware crafted in the UK.



LINKcloud

The central management hub for all your vessels.



LINKapp

Your vessel, in the palm of your hand.



LINKdisplay app

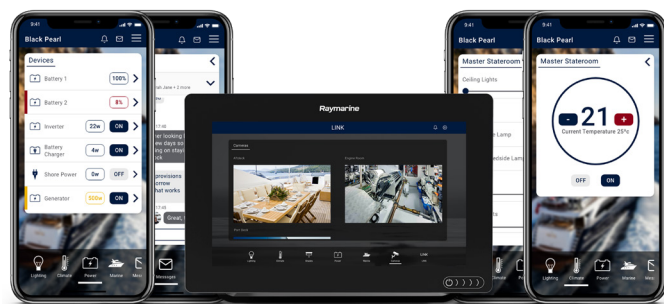
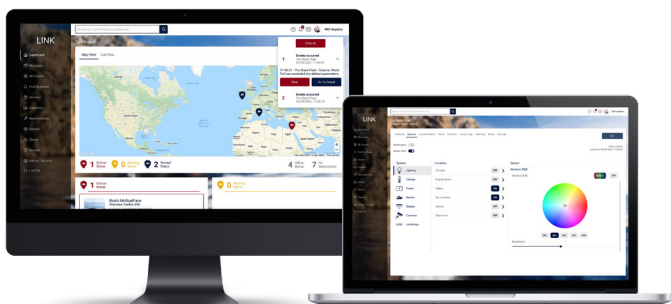
The full power of LINK available from the bridge.

LINK MONITORING

- ▶ Complete visibility of your vessel both locally and remotely.
- ▶ Use real-time information to oversee critical devices such as engines, generators, bilge, batteries and tank levels.
- ▶ View data from instrumentation, including navigation panels, AIS, depth sounders, and environmental systems.
- ▶ Receive automated critical and warning alerts from NMEA.
- ▶ Create custom alerts that trigger based on a single condition or a combination of conditions.
- ▶ Customise which notifications you want to receive and how you wish to receive them, e.g. SMS, WhatsApp or email.
- ▶ Access to device historical data via comprehensive logging.
- ▶ Edit your dashboard to only see the data you're interested in.

LINK CONTROL

- ▶ Unrivalled control of your vessel both locally and remotely.
- ▶ Effortless digital switching as well as the ability to directly control the properties of a device, e.g. dim lights to 40%.
- ▶ Create any scenes, including 'evening mode' and 'all off'.
- ▶ Automated routines ensure you can enjoy your time onboard without worrying, e.g. turn on charger if battery low.
- ▶ Unique Simple View transforms raw data into recognisable, easy to control devices.
- ▶ Comprehensive suite of integration solutions to link together marine systems and smart home functionality.
- ▶ Use LINK's powerful smartphone app to control your vessel from anywhere in the world.

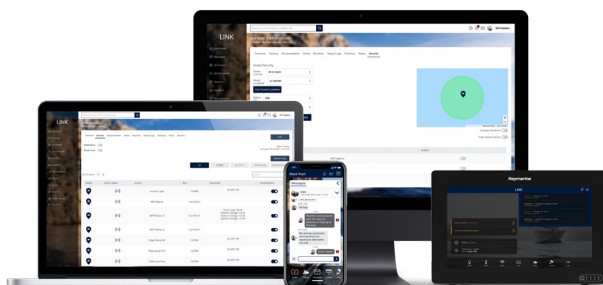


LINK SECURITY & SUPPORT

- ▶ View up to 10 separate security cameras via the LINK app.
- ▶ Support for professional-grade security systems that can be integrated with LINK alerts and routines.
- ▶ Set a vessel geofence and receive alerts if the boundary is crossed, or set a routine to disable onboard systems.
- ▶ Enable additional users, e.g. crew, boat builders etc., and define what vessel information they can view and control.
- ▶ Easy setup thanks to automatic device discovery.
- ▶ Virtual flight case stores all your documentation in the LINKcloud with user permissions to limit access if required.
- ▶ Enable your boat builder and maintenance team to support you remotely by monitoring issues with onboard devices.
- ▶ Messaging suite allows all vessel users to keep in touch.
- ▶ Access and manage vessel cellular data contracts.

LINK BRIDGE

- ▶ Crafted from aluminium with a hardened, anodised black outer for extreme strength and durability.
- ▶ Unrivalled connectivity options to utilise the networks and systems already on your vessel.
- ▶ No separate power supply is required.
- ▶ Unique low power mode that can alert you of any knocks or bumps even when the vessel is powered down.
- ▶ Embedded eSIM functions worldwide to transmit your data.
- ▶ Built-in Iridium Satellite transmitter can be used when out of cellular signal range (additional subscription required).
- ▶ LINKbridge functions locally (when onboard) and remotely. A subscription is required for remote functionality.



LINK

For more information or to schedule a demo:

Visit: www.smartyachts.link

Email: info@smartyachts.link



Full Brochure