



SPLASH 30

By Eco-systems watermakers

Carrer d'Horta 22 – 08203 Sabadell – Spain

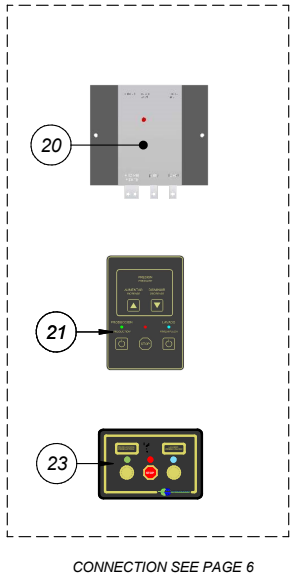
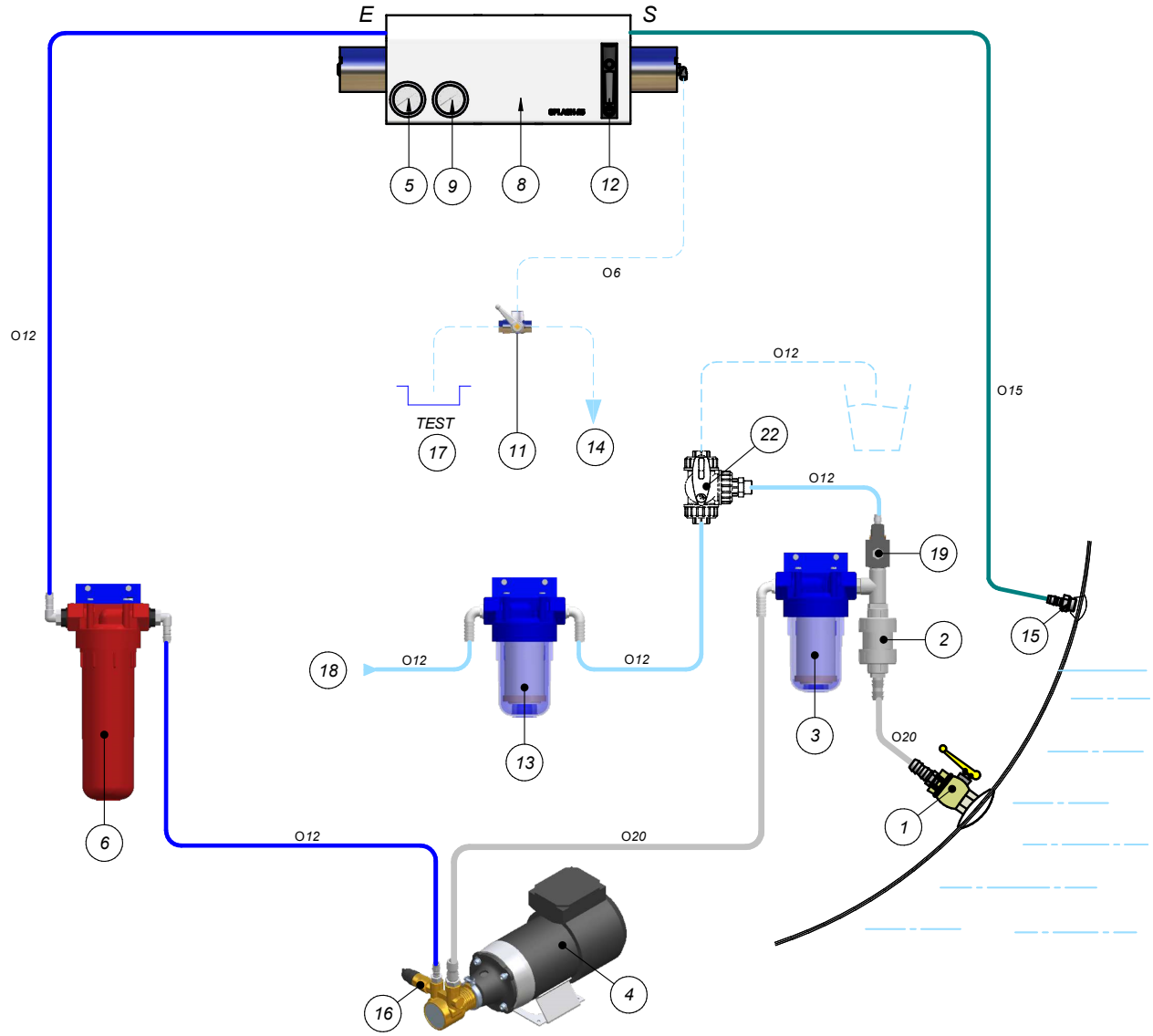
www.eco-systems.com

+34 647 219 510 export@eco-systems.com

SPECS SPLASH 30

Installation, packing list, dimensions, and options

SPLASH 30 – 12 / 24 V INSTALLATION



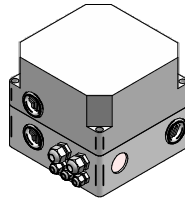
SYSTEM COMPONENTS

- 1. - Seacock valve to uptake the sea water
- 2. - Anti-return valve
- 3. - Washable strainer filter
- 4. - Low pressure booster pump -12/24V DC motor
- 5. - Low pressure gauge
- 6. - 5 microns filter container
- 8. - High pressure pump with energy recovery INTEGRAL CERAMIC
- 9. - High pressure gauge
- 11. - (OPTIONAL) Three ways valve for the produced water
- 12. - Produced water flowmeter
- 13. - Anti Cl carbon filter
- 14. - Produced water output to the tank
- 15. - Brine discharge thru-hull
- 17. - Direct produced water output - TEST
- 18. - Boat freshwater input
- 19. - Fresh flush solenoid valve
- 21. - Digital control panel
- 22. - (OPTIONAL) Three way valve for wintering
- 23. - (OPTIONAL) Remote Control Panel

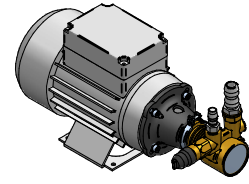
SPLASH 30 – 12 / 24 V PACKING LIST



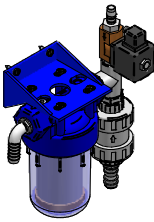
MAIN UNIT



POWER BOX



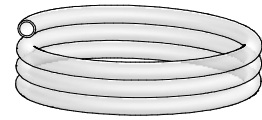
LOW PRESSURE
PUMP



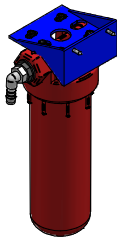
STRAINER FILTER
SET



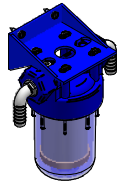
CONTROL
PANEL



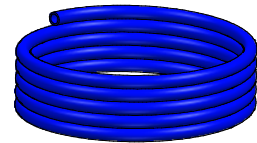
HOSE CLEAR BRAID Ø20



LOW PRESSURE FILTER
SET



CARBON FILTER SET



HOSE ½ BLUE



TUBE Ø6 x 4 BLUE



10- HOSE CLAMP Ø12/22



4- HOSE CLAMP Ø16/27



CONNECTOR Ø6 TUBE
¼ BSP PLASTIC



ADAPTER ½ BSP
¾ BARB PLSTIC

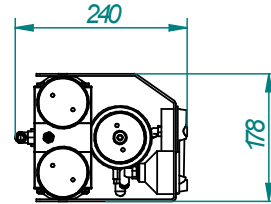
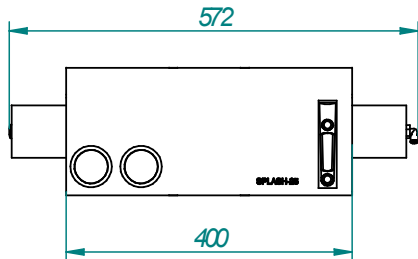


2- ADAPTER ½ BSP
½ BARB PLSTIC

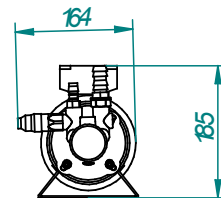
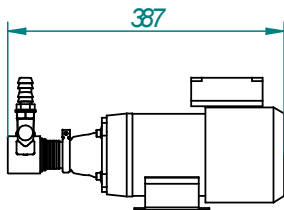


FILTER WRENCH

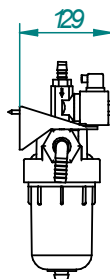
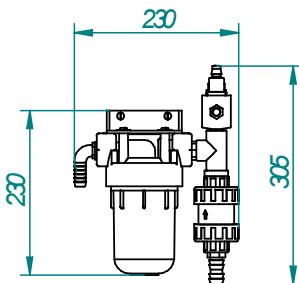
SPLASH 30 – 12 / 24 V DIMENSIONS



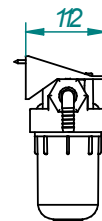
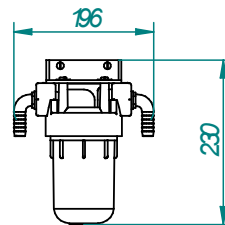
MAIN UNIT



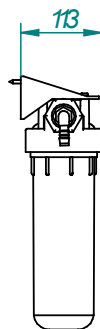
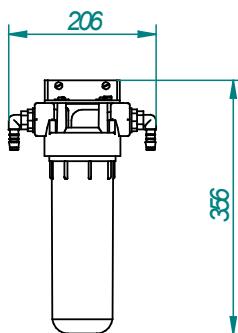
MOTORPUMP 12/24 V DC



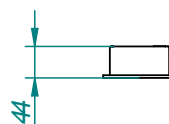
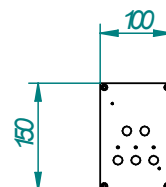
SEA STRAINER FILTER



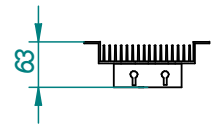
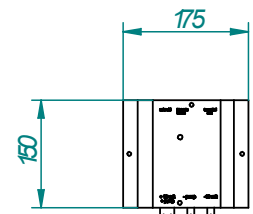
CARBON FILTER



LOW PRESSURE FILTER



CONTROL PANEL



POWER BOX

SPLASH 30 – 12 / 24 V

SPECS



Electrical specifications

- 300 W Motor - 12 V DC consumption: 14 Amps, 168 W*
- 300 W Motor - 24 V DC consumption: 7 Amps, 168 W*
- Average consumption per litre: 6,4 W*

*The consumption is estimated and might have some variation depending on the water temperature, salinity and system installation.

Other specifications

- Booster pump minimum inlet pressure: +0,05 bar
- Booster pump outlet pressure: 8 – 10 bar
- High pressure pump outlet pressure: 45 – 55 bar
- Feed flow: 400 litres / hour
- Average effective production: 30 litres / hour (+/- 10%)
- Conversion: 7,5 %
- Rejected/permeated ratio: 9 : 1
- Membrane type: 25/21 SPECIAL

SPLASH 30 – 12 / 24 V

COMPONENTS' WEIGHT

COMPONENTS	WEIGHT
High pressure pump	14 KG
Motor set	7 KG
Stainer filter set	1.2 KG
Low pressure filter set	1 KG
Carbon filter set	1.2 KG
Power box	0.5 KG
Digital control panel	0.5 KG

STANDARD MODEL

- Automatic pressure regulation
- Energy recovery high pressure pump
- Integrated membranes to the high pressure pump – without high pressure pipes
- **Production control** – optimize the production depending on the water condition (temperature /salinity) by adjusting the inlet water
- **Programming mode:** cycle of 1, 2 or 3 hours production finishing with a fresh flush
- **Hydraulic indicators:** Flowmeter, low pressure gauge, high pressure gauge
- **Automatic fresh flush:** 2 min temporized fresh flush that you activate with a simple button. During the flush, the speed of the motor is reduced by two in order to use a small amount of water.

SPLASH 30 – 12 / 24 V OPTIONS



Remote control

Start, flush, and stop the unit from an easy access point.

Wintering valve

This valve allows you to winterize your unit the easiest way possible.



Three-way production valve

You can send the produced water to the tank or to the kitchen.

Maintenance kit

In this kit you will find all the spares you need to for one year navigation.

It includes two 5 microns filters, one rotary vane pump, one carbon filter and 250 g of membrane conservative.

