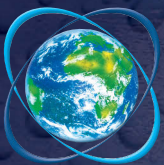




# HEPWORTH MARINE INTERNATIONAL



PERFORMANCE DESIGNED WIPER SYSTEMS



HEPWORTH  
PANTOGRAPH



STRAIGHT LINE

# marine



# wiper motors



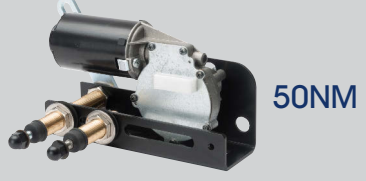
2Nm



20Nm



30Nm



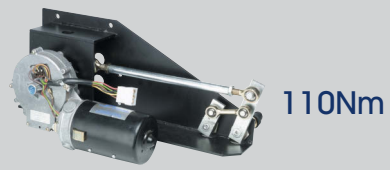
50Nm



80Nm



100Nm



110Nm

# controllers



1000 Series



2000 Series



3000 Series



8000 Series



# wash systems

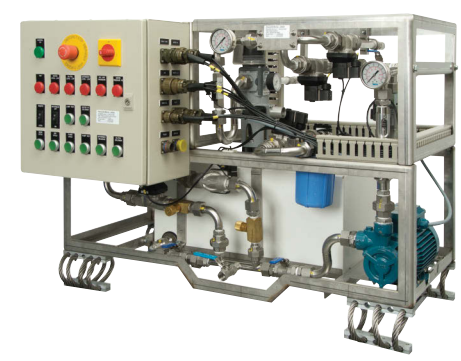
## Tanks

Tanks are available in various sizes, shapes and capacities, also in stainless steel upon request.



## Pumps

Pumps are available in different voltages and performance.



Customised wash system



# approvals



Products are available to suit all marine vessels from leisure craft to naval ships and offshore rigs:

- Single, Dual and Triple Arm Systems
- Design, supply and fit of standard and bespoke marine wiper systems
- Refurbishment wipers and motors
- Pendulum wiper systems, wiper arms, wiper motors and linkages
- Pantograph wiper systems, wiper arms, wiper motors and linkages
- Clearview screens
- Electric wiper systems
- Manual wiper systems
- Spare parts for windscreen wiper systems
- Control systems
- Wiper spares
- Retrofit wipers
- Overhaul wipers
- Wash tanks
- Wash pumps

**B Hepworth's modern offices and manufacturing premises are centrally based within the UK.**

The huge open-plan warehouses house all the production facilities from welding and powder coating, to inspection and despatch. Efficient lines of communication between all departments ensures excellent productivity and efficient streamlining of orders from receipt to delivery.



*Laser installation*



*Manufacturing Cells*



*Machine shop*

## manufacturing and design capabilities

Our wide range of fabrication services offered includes:

- Metalwork Fabrication & Machining
- Precision Engineering
- Laser Cutting
- CNC Machining
- Milling and Turning
- Punching
- Folding
- Welding
- Powder Coating
- Metal Polishing



## Performance Designed Wiper Systems

B Hepworth and Co Ltd is committed to the design, manufacture and supply of windscreen wiping systems, washing equipment and associated control systems offering excellent quality, performance reliability and safety that satisfy the needs, expectations and requirements of our customers. We have a worldwide network of over 20 agents and export to over 50 countries each year, offering an extensive distribution service for our Marine, Rail and Commercial products.

In our pursuit of excellence, we provide a design and application facility second to none, based upon electrical and mechanical 'Solid Works' 3D design. Our experienced engineers can assist from the earliest stages of design. Coupled with our extensive, self-sufficient manufacturing facilities, and our accreditation to BS 9001: 2000, Lloyd's Register, ABS and DNV – internationally-accepted standards – we retain our status as a market leader in a competitive field.

## 性能优越的雨刮器系统

B Hepworth 公司致力于汽车挡风玻璃的擦洗系统、清洁设备及相关控制系统的设计开发、制造与供应，我们以优异的产品质量和安全可行的表现来满足我们广大顾客需求和期望。我们在世界各地分布有20多个代理机构，并且每年面向50多个国家进行出口，从而在航海、铁路和商业产品领域创建了一个广泛的销售服务网络。

我们致力于追求尽善尽美，并凭借着机电领域专业的“Solid Works” 3D 设计软件基础上，提供独一无二的设计和优越的产品。我们有着经验丰富的工程师，他们能在设计初期就开始为您提供服务。此外，凭着广泛、自足的制造能力，并且通过了BS9001: 2000 英国劳氏质量认证、ABS 和DNV 国际标准认证，这些使我们在激烈的行业竞争中始终处于市场领先地位。

## Sistemi tergicristallo progettati per offrire le massime prestazioni

B Hepworth and Co Ltd è dedicata alla progettazione, fabbricazione e fornitura di sistemi tergicristallo, sistemi di lavaggio e relativi sistemi di controllo e comando, ed è in grado di offrire il massimo grado di qualità, prestazioni, affidabilità e sicurezza per soddisfare le esigenze, le aspettative e le richieste di tutti i nostri clienti. Con una rete mondiale composta da oltre 20 agenti ed esportazioni annue in più di 50 paesi, possiamo offrire un servizio capillare di distribuzione per tutti i nostri prodotti, sviluppati specificatamente per i settori nautici, ferroviari e commerciali.

L'impegno e l'eccellenza delle risorse a nostra disposizione, abbinati a moderni impianti di fabbricazione autosufficienti, ci consentono di offrire un servizio di progettazione e applicazione senza confronti, grazie anche all'avanzato sistema di progettazione elettrica e meccanica 3D "Solid Works". I nostri esperti e i nostri ingegneri possono fornire l'assistenza richiesta fin dalle prime fasi della progettazione. Le ambite accreditazioni internazionali BS 9001: 2000, Lloyd's Register, ABS e DNV ottenute dalla nostra azienda sono testimonianza della nostra posizione come *market leader* di questo settore estremamente competitivo.

## Sistemas limpiaparabrisas de alto rendimiento

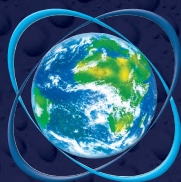
Hepworth and Co Ltd se dedica al diseño, fabricación y suministro de sistemas limpiaparabrisas, equipos de lavado y los sistemas de control asociados; además ofrecemos niveles excelentes de calidad, rendimiento, fiabilidad y seguridad que satisfacen las necesidades, expectativas y exigencias de nuestros clientes. Disponemos de una red mundial de más de 20 agentes y exportamos cada año en más de 50 países, ofreciendo un amplio servicio de distribución para nuestros productos orientados a los sectores marino, ferroviario y comercial.

En nuestra búsqueda de la excelencia, prestamos un servicio excepcional de diseño y aplicación, basado en la herramienta de diseño eléctrico y mecánico tridimensional 'Solid Works'. Nuestros experimentados ingenieros pueden prestar el servicio de asistencia desde las primeras fases del diseño. La combinación de nuestras amplias instalaciones de fabricación autosuficientes y nuestra certificación BS 9001: 2000, Lloyd's Register, ABS y DNV (normas internacionalmente aceptadas), nos permite mantener nuestra posición de líderes del mercado en un sector competitivo.

## Für hohe Leistung ausgelegte Wischersysteme

B Hepworth and Co Ltd befasst sich intensiv mit der Konstruktion, Herstellung und Lieferung von Scheibenwischersystemen, Waschanlagen und zugehörigen Steuerungssystemen, die aufgrund ihrer vorzüglichen Qualität, zuverlässigen Leistung und Sicherheit gewährleisten, dass den Bedürfnissen, Erwartungen und Anforderungen unserer Kunden entsprochen wird. Wir unterhalten ein weltweites, über 20 Vertretungen umfassendes Netz, exportieren jedes Jahr in über 50 Länder und bieten einen lückenlosen Lieferdienst für unsere marineteknischen, eisenbahntechnischen und gewerblichen Produkte.

Im Rahmen unseres Strebens nach Perfektion bieten wir einen unübertroffenen Konstruktions- und Anwendungsdienst, der auf elektromechanischem 'Solid Works' 3D Design basiert. Unsere erfahrenen Ingenieure können bei der Konstruktion von Anfang an mithelfen. Zusammen mit unseren komplett eingerichteten, autonomen Fertigungsstätten und unserer Akkreditierung nach BS 9001: 2000, Lloyd's Register, ABS und DNV – international anerkannten Normen – halten wir an unserem Status als Marktführer auf einem hart umkämpften Gebiet fest.



**HEPWORTH**  
GROUP

...showing the way

## B Hepworth & Co Ltd

4 Merse Road, North Moons Moat,  
Redditch, Worcestershire B98 9HL, UK

T +44 (0)1527 61243

F +44 (0)1527 66836

E [marine@b-hepworth.com](mailto:marine@b-hepworth.com)



[www.b-hepworth.com](http://www.b-hepworth.com)