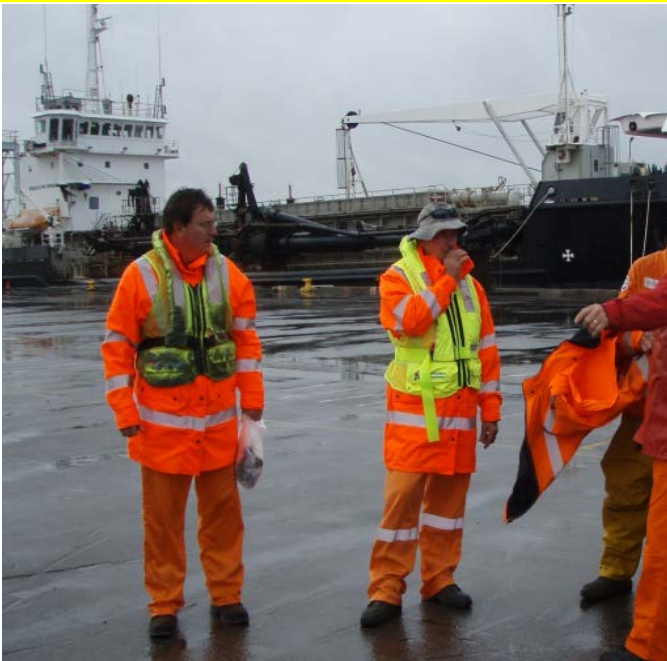


SOS MARINE

Survival Operations Specialists

S.O.S Waterfront Life jackets provide a new approach to improve the working capabilities of marine professionals

ISO 12402 certified



Optional: This lifejacket can be attached to a mesh vest or molly vest with a zipper fastening at the front with sufficient adjustment as to be worn over wet weather clothing.

What SOS Marine can do for marine professionals?

SOS Marine Lifejackets are a unique inflatable PFD they are designed to be housed in and around the neck collar valise with a Quick Bursting Zipper and adjustable waist belt and back strap.

- This lifejacket incorporates two (2) zipper pockets, one on the bottom of the valise on the wearer's left hand side this can be used for spare cylinder and inflation cartridge or for rescue beacon or general cargo. The other side is for checking to see if the cylinder and inflation cartridge are operational.
- Lifejackets have been designed with two operating systems, manual and automatic versions. Both are compatible so that you can upgrade from a manual to automatic. The wearer can also inflate the lifejacket via the oral inflation tube on the left-hand side.
- The waist belt and back strap are constructed from 50mm webbing and features a stainless steel interlocking style buckle and D ring for attaching a safety harness.
- The lifejacket has been designed to turn the body of a conscious or unconscious person face up at the correct angle of floatation with the mouth and nose held clear of the water in the minimum of time.
- **A SOLAS** flashing signal light can be fitted and would be located on the front chest area. It is activated upon immersion in water and if necessary turned off during daylight hours.
- **SOLAS** grade tape is located on a minimum of six (6) places on the upper side of the buoyancy chamber, as well as, in two (2) places on the hood, if fitted.
- A pea-less whistle is provided for use in water.

SOS Marine

Survival Operations Specialists

23 A Rochester Street, Botany NSW 2019

E sales@sosmarine.com Tel +61 2 97000233 F+61 2 97000233

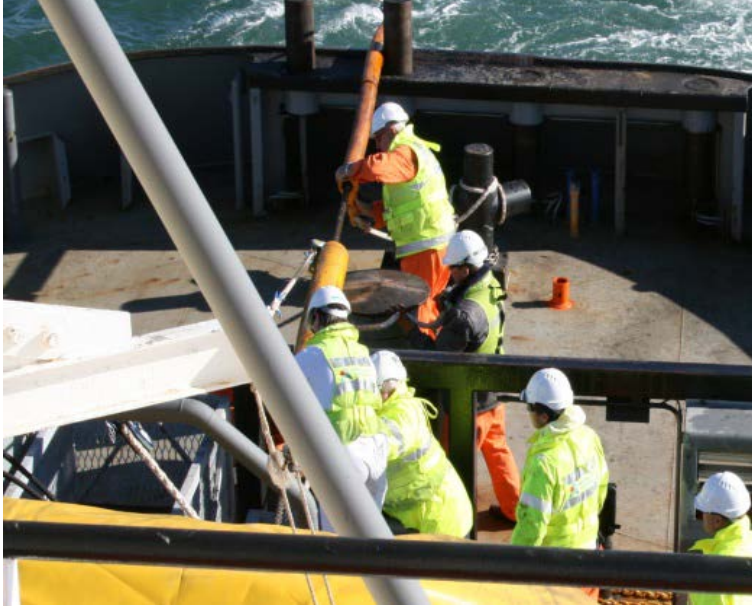
www.sosmarine.com

SOS PROFESSIONAL LIFEJACKETS

Quick Burst Manual/Automatic



The 275N version is designed for use whilst wearing special protective clothing and heavy equipment



Optional: Nomex valise cover available

Prevents welding sparks and arcing from damaging the lifejacket bladder

The lifejacket has a zipper inspection opening on the wearer's right hand side at the bottom of the valise. To see if the cylinder & inflation cartridge are still operational, the sensors are **GREEN** unit is operational. If the sensor is **RED** Stop & Service



S.O.S. WATERFRONT LIFEJACKETS FOR THE MARINE PROFESSIONAL

- This vest gives the wearer excellent manoeuvrability it is not bulky, heavy or restrictive and allows for complete freedom of movement.
- Your company logo can be placed on the lifejacket.
- Hi-visibility reflective tape has been sewn on the front and back.
- **OH&S Safety feature:** It is important to stay hydrated especially when working outside. Often it is not convenient to access a water source. SOS Marine has developed a lifejacket with hands -free system designed within the vest. This is an ideal solution that will maintain productivity and avoid the negative health effects of dehydration and heat stress. SOS Marine has been the pioneer in developing this feature.

SOS Marine

Survival Operations Specialists

23a Rochester Street, Botany NSW 2019 Australia

E sales@ sosmarine.com Tel: +61 2 97000233 Fax: +61 2 97000277

www.sosmarine.com