

NaviPro ECS

Charting Made Easy



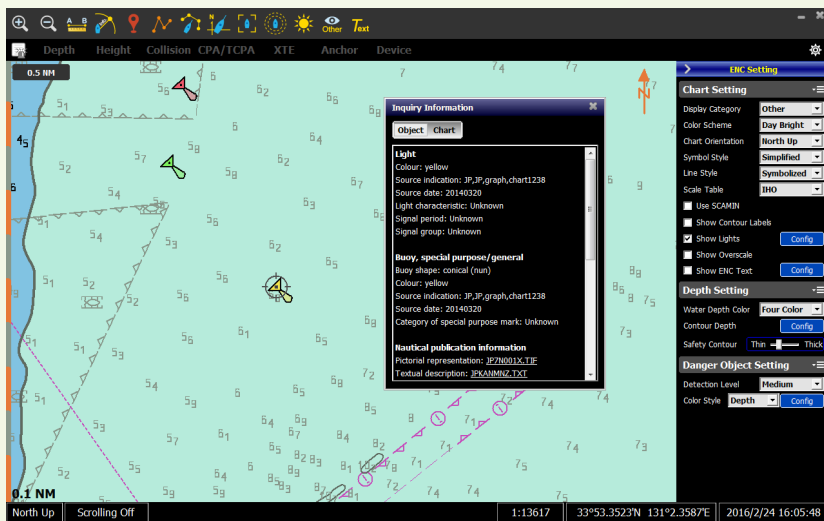
AMEC NaviPro ECS Software

A professional grade ECS software at consumer rate, the AMEC NaviPro is designed and packed with advanced features that are essential and unique for safety navigation.

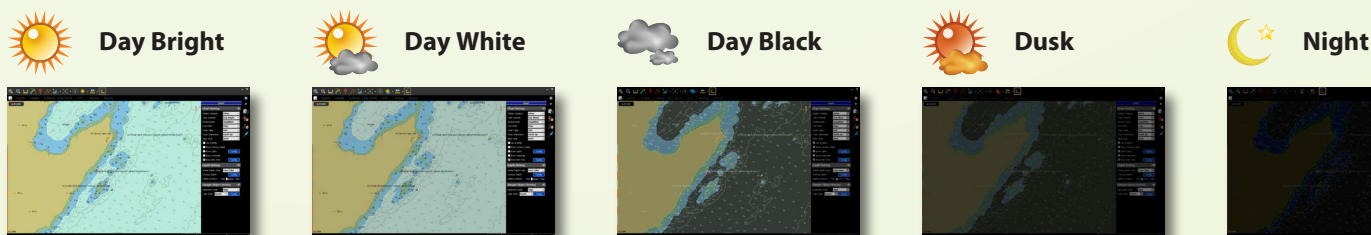
NaviPro is an Electronic Chart System (ECS) newly developed for use as navigation information system on vessels. It can be used for different types of vessels, such as, a non-SOLAS passenger vessel, a small fishing vessel, a recreational vessel, a tug or work boat, etc.

NaviPro can be integrated with AIS (automatic identification system) equipment to support collision warnings and risk alerts to achieve greater voyage safety.

- ▶ Supports international standard S-52 and S-57/S-63 chart formats
- ▶ Seamless quilted map display
Scroll screen seamlessly and effortlessly
- ▶ Intuitive user interface!
The easy to understand user interface let users to learn the software quickly.
- ▶ Include all essential ENC settings
The software features all necessary ENC functions such as Display Categories, Symbol Style, Line Style, Light, Contour Labels, etc
- ▶ Guard Zone
With the feature turn-on, the software warn and highlight danger object within the Guard Zone range.



High Contrast User Interface



NaviPro ECS Features

- Display S-57/S-63 vector charts
- Chart compatibility: ChartWorld, Admiralty AVCS, ENC (S-57/S-63), NOAA ENC®
- Chart portfolio management tools
- Seamless "quilted" chart display
- North-up, Heading-up, Course-up chart orientation
- Detailed query of chart feature objects
- Chart scale table
- 5 Color scheme (Day bright, Day white, Day black, Dusk, Night display modes)
- Show graticule
- AIS vessel display
- AIS information panel
- Scaled vessel display (for ownship and AIS targets)
- ARPA target display
- Full-screen cruise mode
- Screen configuration (size) setting
- Support multiple GPS receivers and other sensors
- GPS navigation
- Auto scroll
- Simulated navigation ("dead reckoning" mode)
- Estimated position (EP)
- Route and marker management
- Unlimited routes
- Unlimited waypoints
- Unlimited position fix (marker)
- Unlimited boundary lines with alarms
- Route obstacle detection
- Advanced voyage planning tool
- EBL/VRM tool
- Target searching
- Record tracks
- Record log
- Replay log
- Guard zone
- Safety navigation
- Safety alarm (depth, height, collision, CPA/TCPA, boundary)
- Device alarm (low GPS signal, device failed)
- Monitoring alarm (anchor watch alarm, XTE alarm)
- Multilanguage UI (English/Chinese/Japanese)

Minimum System Requirements

OS: Microsoft® Windows 2000, XP, Vista, Win7, Win8, Win10
 CPU: 500 MHz processor or better
 RAM: 256MB or above
 HDD space requirement: 500MB or better
 Display Resolution: 1024x768 or above



Your Heading to the Future

Alltek Marine Electronics Corporation

14F-2, No. 237, Sec. 1, Datong Road, Xizhi District, New Taipei City, 22161, Taiwan

Tel: +886 2 8691 8568 Fax: +886 2 8691 9569

Sales Contact

For more information, please contact your local representative or Alltek Marine at sales@alltekmarine.com

www.alltekmarine.com

Distributor/Dealer