



# SEASTAR POWER ASSIST



## SEASTAR POWER ASSIST STEERING

SeaStar Power Assist steering dramatically reduces steering effort in heavy or high torque applications. Power assisted steering delivers exceptional performance and unparalleled levels of safety and comfort, even in the most extreme conditions.





## WHY USE POWER ASSIST?

Today's high horsepower engines are much heavier and are producing more propeller torque than ever before. Naturally this additional weight and torque has an effect on the boat's steering when these loads are transferred to the wheel. Unacceptable levels of steering load can increase driver fatigue and discomfort.

The SeaStar Power Assist virtually eliminates all steering loads and provides modern boaters the same level of steering comfort and control found in cars. Even in the most extreme applications, the boat will be more comfortable to steer.

The SeaStar Power Assist allows the boat to be driven safely and easily by the whole family.

## SYSTEM OVERVIEW

The SeaStar Power Assist unit can be installed on new SeaStar steering installations or as an easy retro-fit to existing systems.

Suitable for most boat types, the SeaStar Power Assist uses an electronically controlled hydraulic pump to provide on-demand power steering.

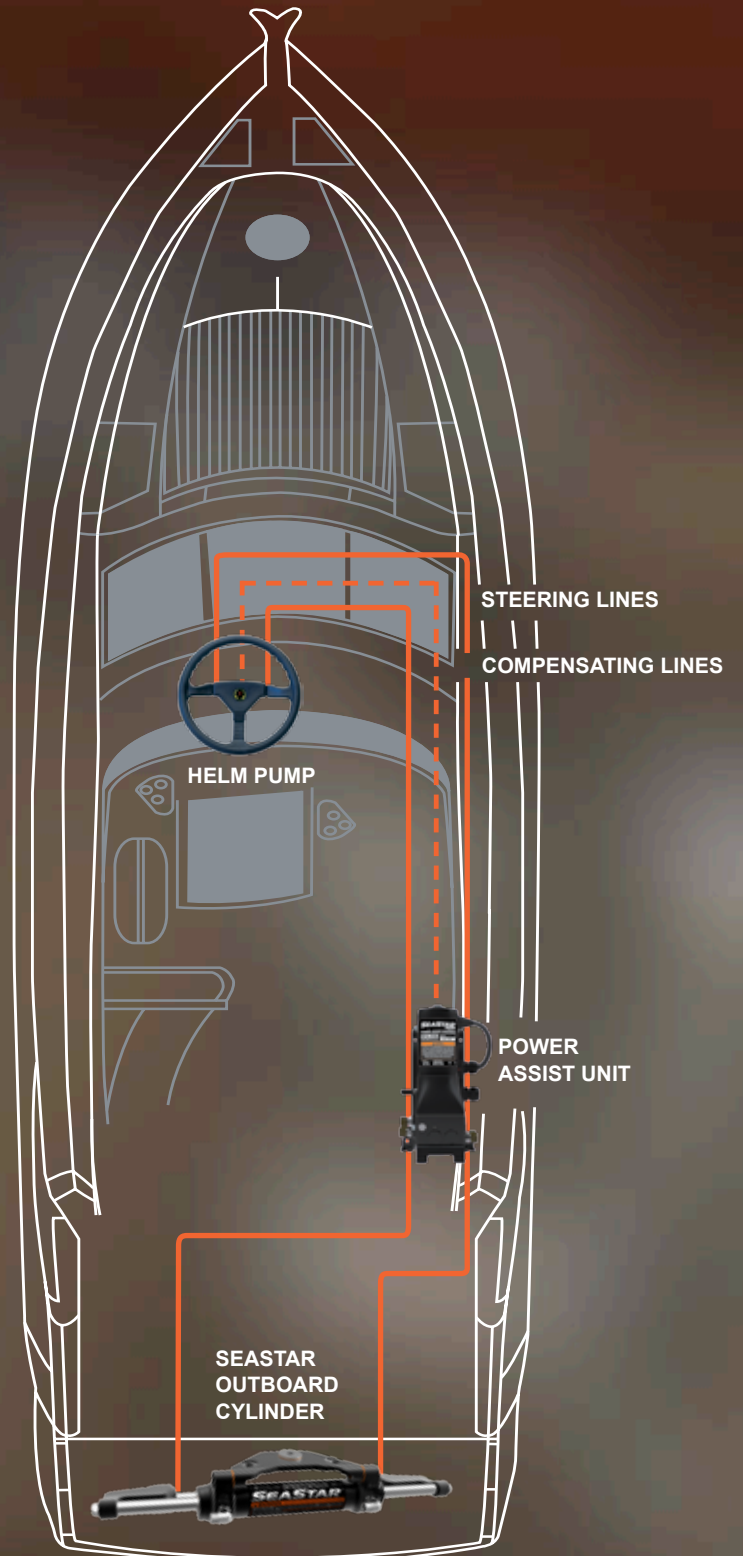
It is installed into the hydraulic steering circuit between the helm and steering cylinder.

The Power Assist unit is powered from the boat's battery and adjusts automatically to the input voltage (12V or 24V).

The SeaStar Power Assist can be used on boats with multiple engines and rudders, multiple steering stations and autopilots.

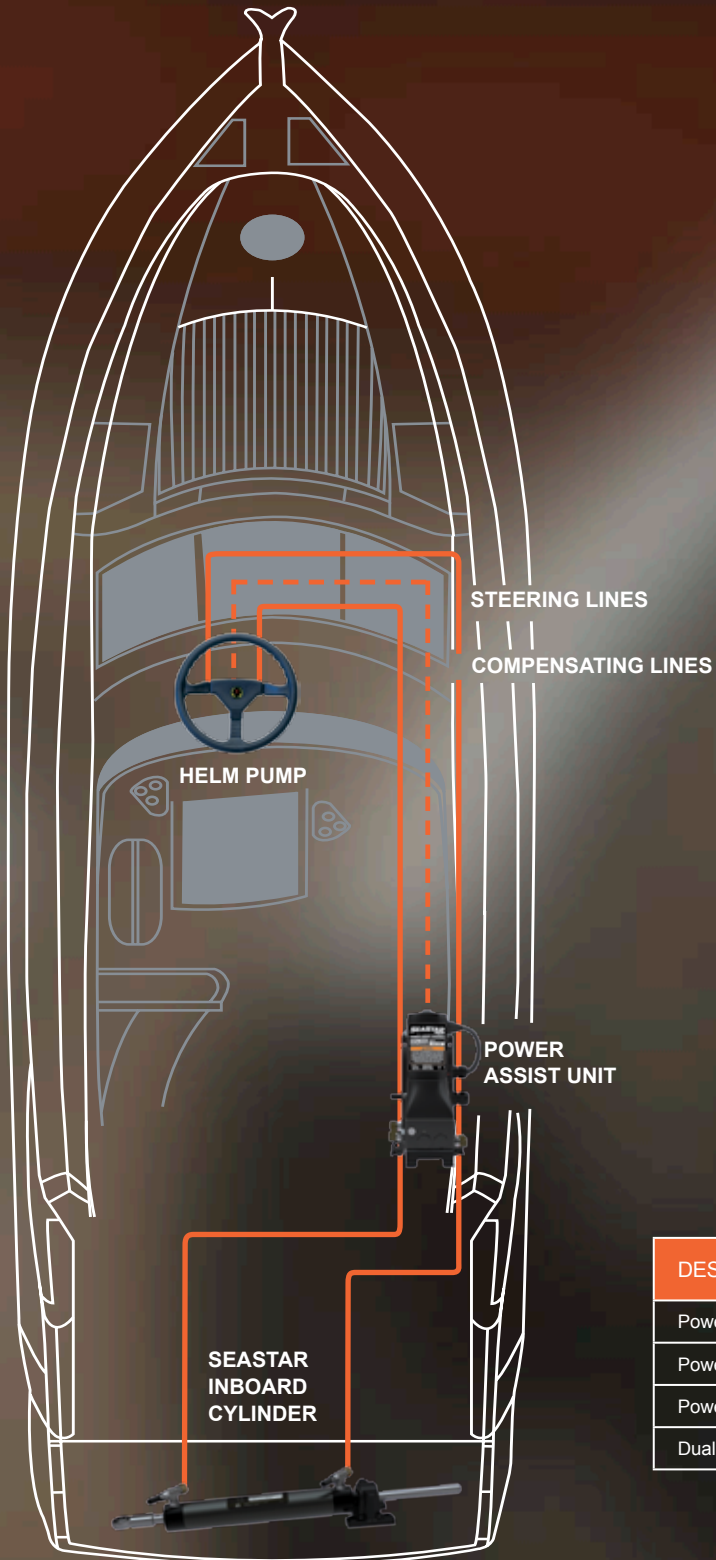
If power to the unit is interrupted for any reason, the steering system will automatically return to manual operation without any change to the number of lock-to-lock turns. In this case, the steering will of course be heavier than with the Power Assist activated.

## TYPICAL POWER ASSIST APPLICATION IN AN OUTBOARD BOAT



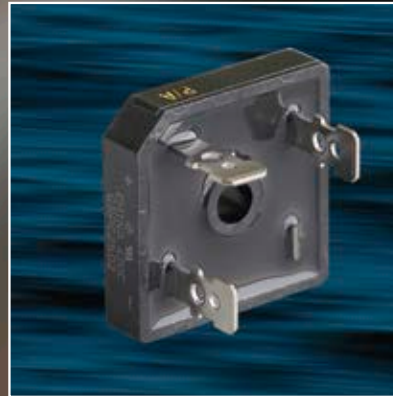


**TYPICAL POWER ASSIST APPLICATION  
IN AN INBOARD BOAT**



**SEASTAR POWER ASSIST PRO**

Specifically designed for high torque single engine outboard applications fitted with SeaStar Pro helms, such as performance bass boats.



**DUAL IGNITION CONTROL KIT**

Dual Ignition Control Kit (HA1201).

For twin engine applications this kit provides connection to two separate ignition circuits. This allows the Power Assist unit to be powered even if one engine is not running.

**FEATURES**

- Dramatically reduces steering effort
- Wall or Floor mount
- Easy to install
- Simple add-on to an existing SeaStar steering system (from 1.4 to 2.4 SeaStar helms)
- OEM or retro-fit
- Compatible with power purge system
- Return to manual in failure mode
- Suitable for use with autopilots
- 12V or 24V operation
- Wiring harness included
- Ignition protected (SAE J-1171)
- ABYC, CE, NMMA, ISO 10592 Approved

DESCRIPTION	PART NO.
Power Assist, 15' Harness	PA1200-2
Power Assist, 25' Harness	PA1225-2
Power Assist PRO, 15' Harness	PA1315-2
Dual Ignition Control Kit	HA1201



©2014 SeaStar Solutions All Rights Reserved.  
Document: NA - SeaStar Power Assist - 2014. Printed in the USA.

[www.seastarsolutions.com](http://www.seastarsolutions.com)